

Hilcorp Energy Corp
Hiawatha B-2
Location ID: 313074



As signs are replaced additional information is required



Debris. Equipment storage.

**Hilcorp Energy Corp
Hiawatha B-2
Location ID: 313074**



Debris



Debris

**Hilcorp Energy Corp
Hiawatha B-2
Location ID: 313074**



Debris



Debris. Unused equipment and supplies.

**Hilcorp Energy Corp
Hiawatha B-2
Location ID: 313074**



Debris. Unused equipment and supplies.

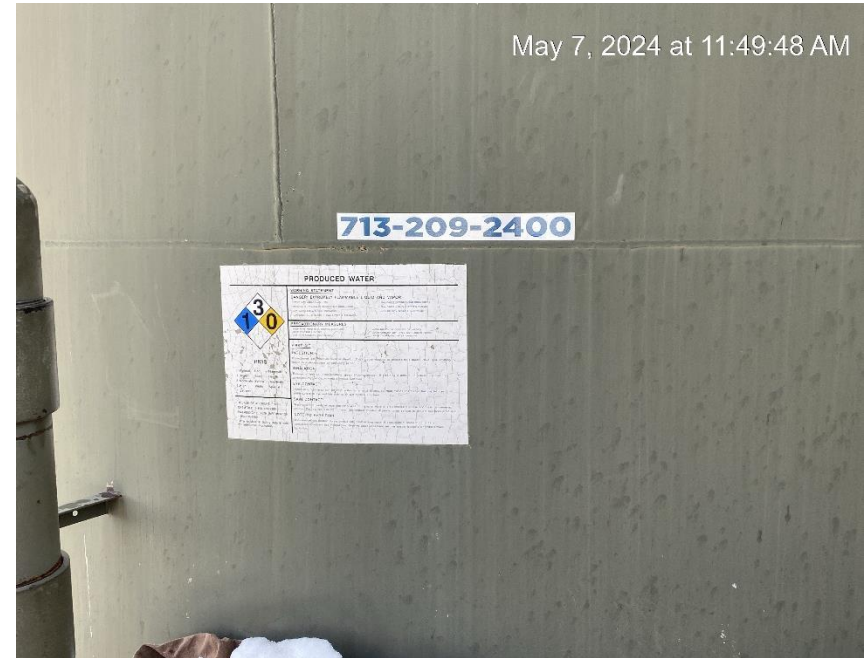


Debris. Unused equipment and supplies.

Hilcorp Energy Corp
Hiawatha B-2
Location ID: 313074



Debris. Unused equipment and supplies.



Tank label missing required information

Hilcorp Energy Corp
Hiawatha B-2
Location ID: 313074



Tank label missing required information



Unlabeled container. Unused equipment.

Hilcorp Energy Corp
Hiawatha B-2
Location ID: 313074



Unlabeled container. Unused equipment.



Debris

Hilcorp Energy Corp
Hiawatha B-2
Location ID: 313074



Debris. Containment open to wildlife



Containment open to wildlife

Hilcorp Energy Corp
Hiawatha B-2
Location ID: 313074



Debris



Debris

Hilcorp Energy Corp
Hiawatha B-2
Location ID: 313074



Debris



Debris. Unused equipment.

Hilcorp Energy Corp
Hiawatha B-2
Location ID: 313074



Debris



Debris

Hilcorp Energy Corp
Hiawatha B-2
Location ID: 313074



Debris. Open to wildlife



Open to wildlife



**Hilcorp Energy Corp
Hiawatha B-2
Location ID: 313074**



Open to wildlife



Pot draining directly on the ground

**Hilcorp Energy Corp
Hiawatha B-2
Location ID: 313074**

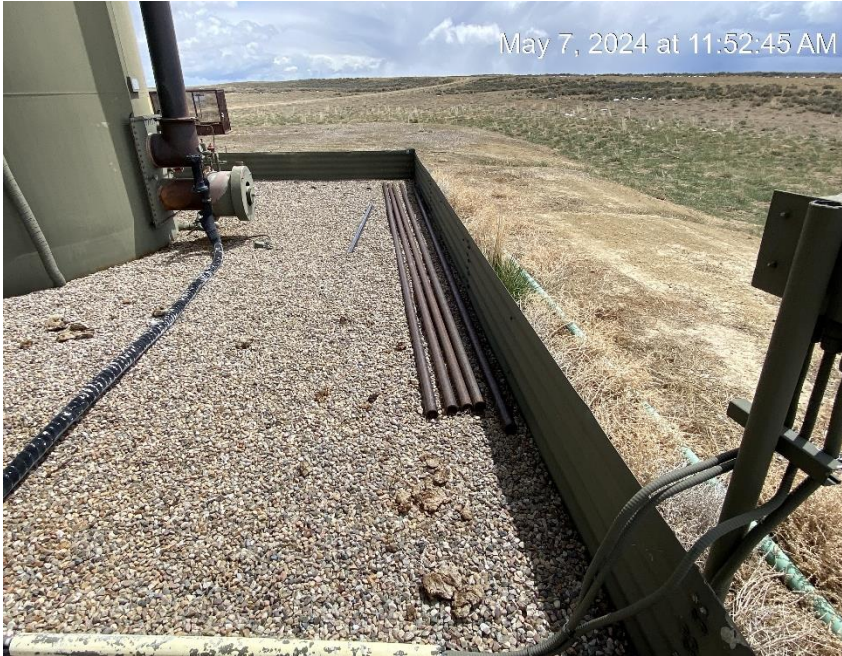


Debris



Storage of unused equipment and supplies.

Hilcorp Energy Corp
Hiawatha B-2
Location ID: 313074



Storage of unused equipment and supplies.



Storage of unused equipment and supplies.

Hilcorp Energy Corp
Hiawatha B-2
Location ID: 313074



Open to wildlife



As signs are replaced additional information is required

**Hilcorp Energy Corp
Hiawatha B-2
Location ID: 313074**



Unmarked anchor



Erosion and sediment migration

**Hilcorp Energy Corp
Hiawatha B-2
Location ID: 313074**



Erosion and sediment migration



Erosion

**Hilcorp Energy Corp
Hiawatha B-2
Location ID: 313074**



Location from Southeast corner



Location from Southwest corner

**Hilcorp Energy Corp
Hiawatha B-2
Location ID: 313074**



Location from Northwest corner



Location from Northeast corner