

COLORADO REGISTERED
HAARD NELSON MAPS
PROFESSIONAL ENGINEER
11-17-23
82000
Harold Marshall

NOTES:
• Contours shown at 2' intervals.

LEGEND:
--- OIL & GAS LOCATION (LOD)
--- AS-BUILT WORKING PAD SURFACE
--- EXISTING DISTURBANCE

CHEVRON U.S.A. INC.

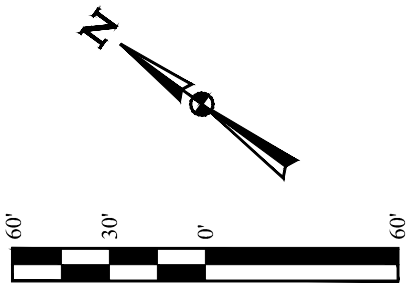
SKR #698-10-BV PAD
TRACT 72, SECTIONS 10 & 15, T6S, R98W, 6th P.M.
GARFIELD COUNTY, COLORADO

SURVEYED BY	DAYTON SLAUGH	06-29-23	SCALE
DRAWN BY	D.R.B.	05-01-23	1" = 60'

CONSTRUCTION LAYOUT - PLAN VIEW



UELS, LLC
Corporate Office * 85 South 200 East
Vernal, UT 84078 * (435) 789-1017

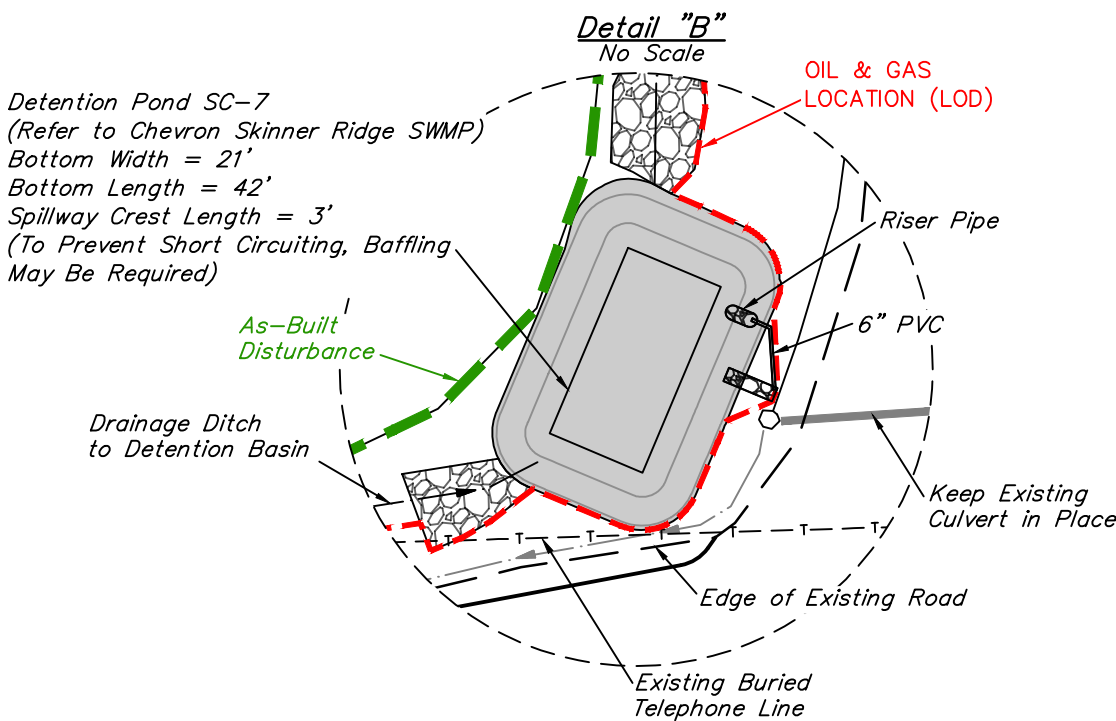
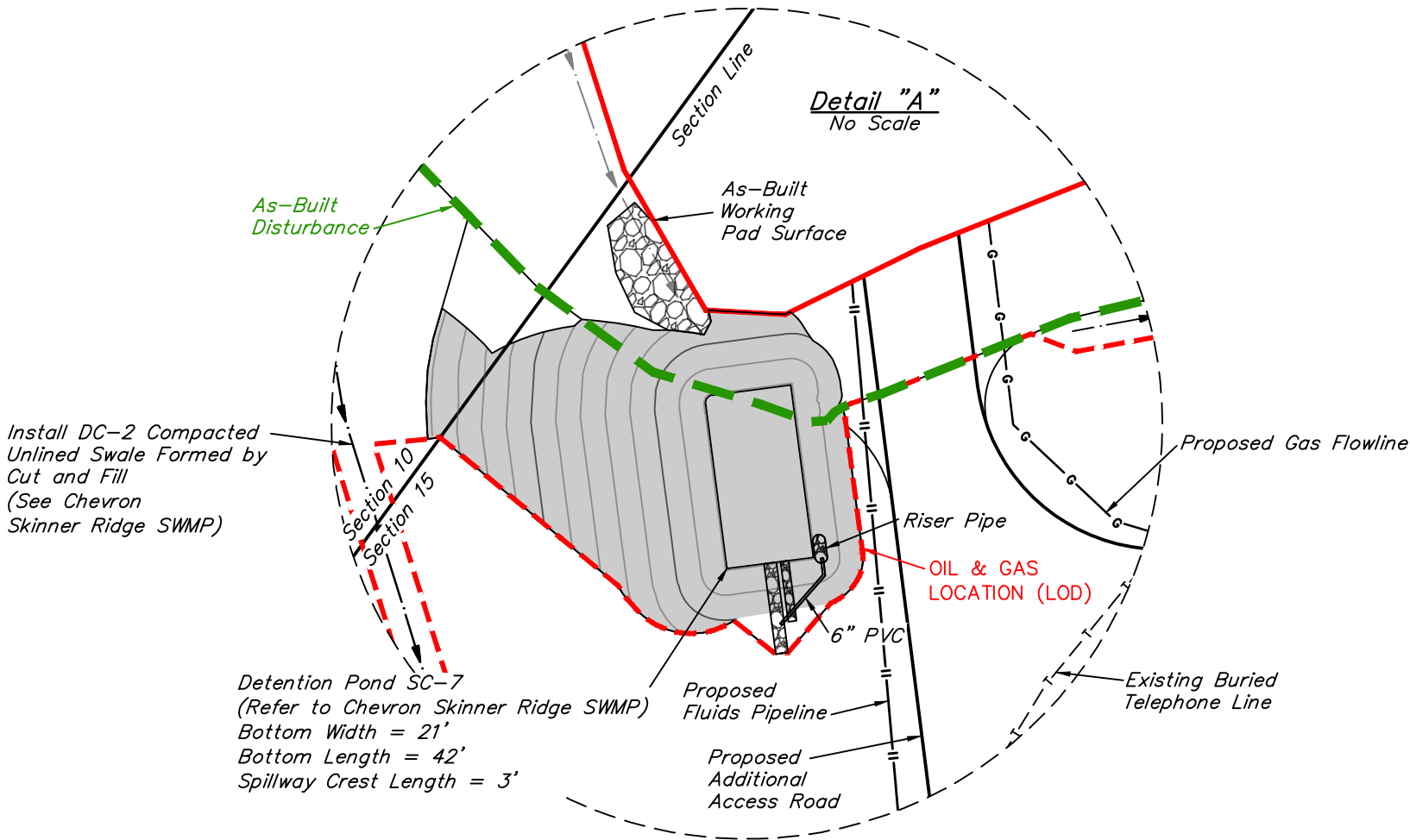


SECONDARY CONTAINMENT
Use Chevron Spill Prevention Control and Countermeasure Plan – Piceance Basin – Skinner Ridge Field for all secondary containment necessary.

Section 1.3.3 – Secondary containment, including the walls and floor of the respective system, is capable of containing oil and has been constructed so that any discharge from a primary containment system will not permeate, drain, infiltrate, or otherwise escape before cleanup occurs.

Section 3.0 – Secondary containment structures are designed to contain the storage capacity of the largest tank with the containment area, plus sufficient freeboard to accommodate precipitation associated with a 24-hour 25-year storm event*.

24-hour 25-year storm event = 2.20 inches (NOAA Atlas 14, Volume 8, Version 2)



REV: 4 11-16-23 T.L.L. (UPDATE LOD & LABELS)

CHEVRON U.S.A. INC.

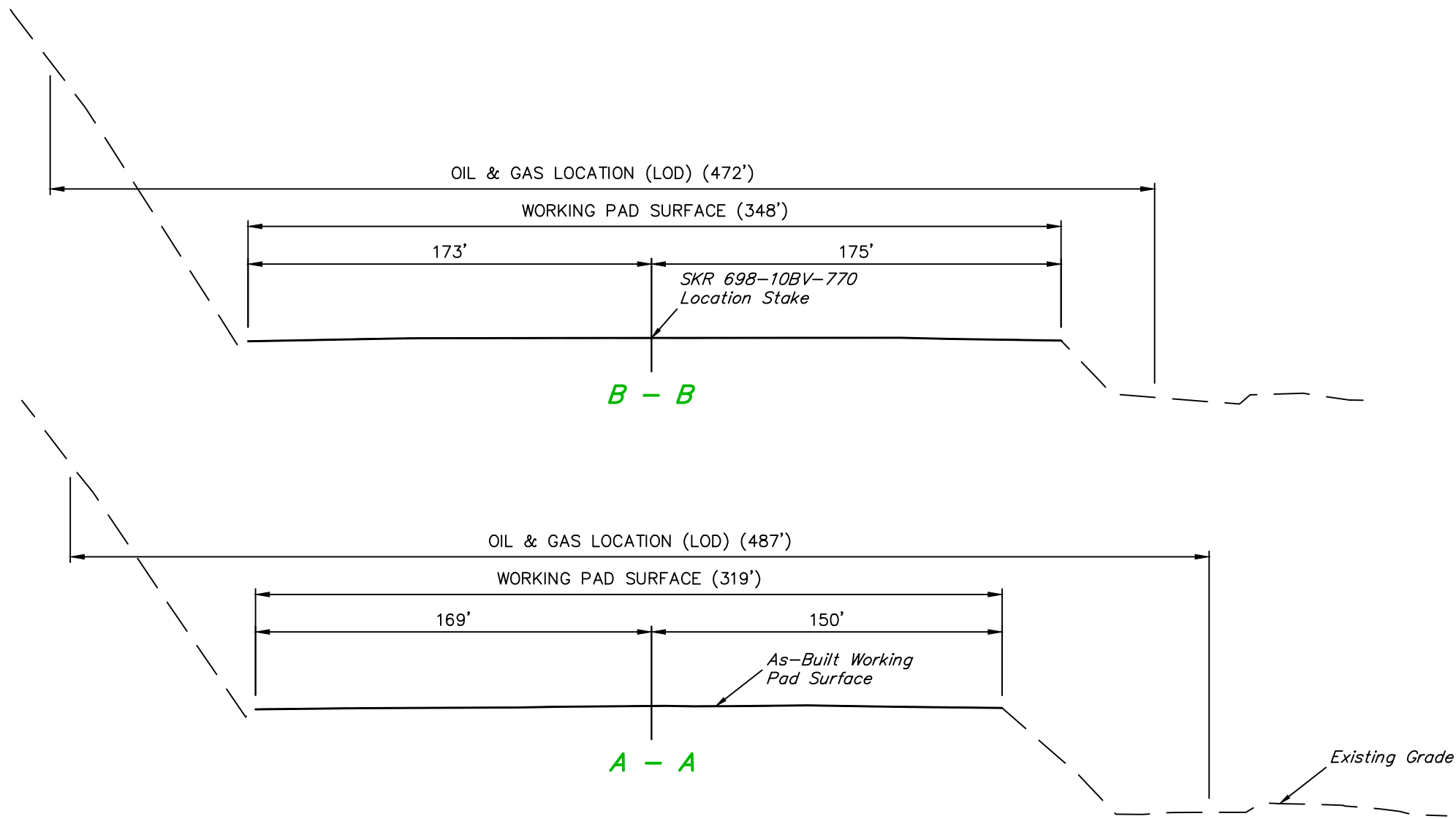
SKR #698-10-BV PAD
TRACT 72, SECTIONS 10 & 15, T6S, R98W, 6th P.M.
GARFIELD COUNTY, COLORADO

SURVEYED BY	DAYTON SLAUGH	06-29-23	SCALE
DRAWN BY	T.L.L.	07-10-23	1" = 60'
CONSTRUCTION LAYOUT - DETAIL SHEET			



UELS, LLC
Corporate Office * 85 South 200 East
Vernal, UT 84078 * (435) 789-1017

1" = 20'
X-Section
Scale
1" = 60'



APPROXIMATE SURFACE DISTURBANCE AREAS		
	DISTANCE	ACRES
TOTAL OIL & GAS LOCATION (LOD)	NA	±6.859
ADDITIONAL PROPOSED ACCESS ROAD SURFACE DISTURBANCE	±110'	±0.100
EXISTING ACCESS ROAD DISTURBANCE	±388'	N/A
80' WIDE PROPOSED GAS FLOWLINE R-O-W DISTURBANCE (WITHIN LOD)	±30'	N/A
80' WIDE PROPOSED GAS FLOWLINE R-O-W DISTURBANCE (OUTSIDE LOD)	±207'	±0.374
80' WIDE PROPOSED FLUIDS PIPELINE R-O-W DISTURBANCE (WITHIN LOD)	±29'	N/A
80' WIDE PROPOSED FLUIDS PIPELINE R-O-W DISTURBANCE (OUTSIDE LOD)	±4,981'	±9.109
TOTAL SURFACE USE AREA		±16.442

APPROXIMATE WELL SITE DISTURBANCE AREAS	
	ACRES
EXISTING PAD SURFACE DISTURBANCE	±3.814
EXISTING CONSTRUCTION DISTURBANCE	±2.348
PROPOSED CONSTRUCTION DISTURBANCE	±0.697
TOTAL OIL & GAS LOCATION	±6.859

REV: 4 11-16-23 T.L.L. (UPDATE LOD & ACREAGES)

CHEVRON U.S.A. INC.

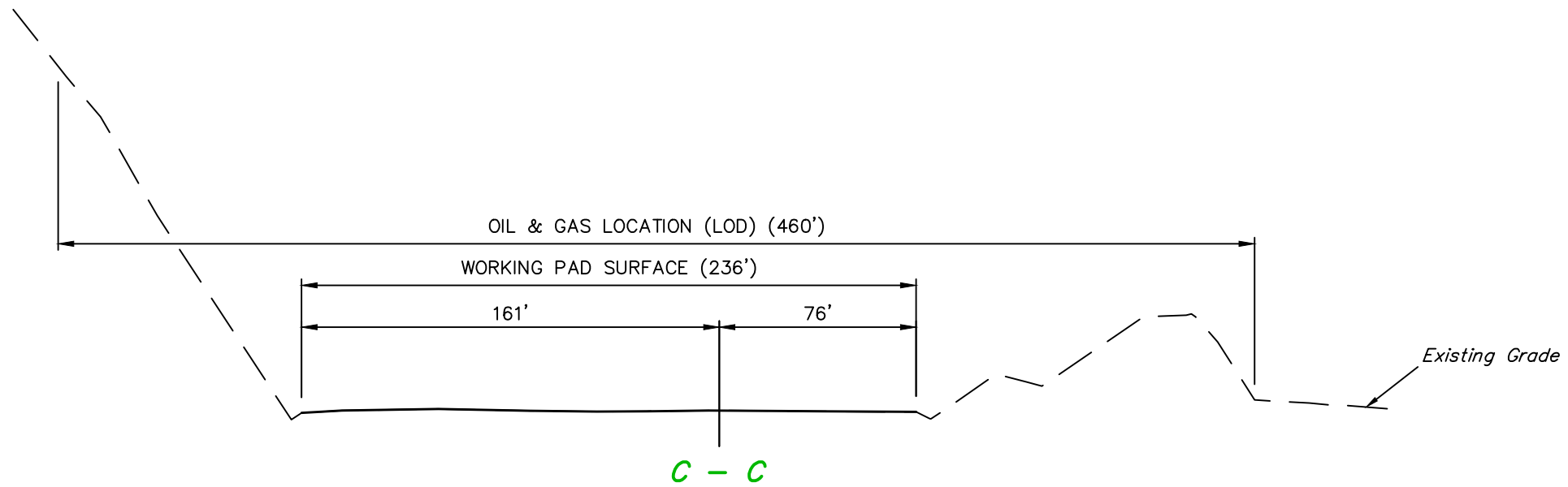
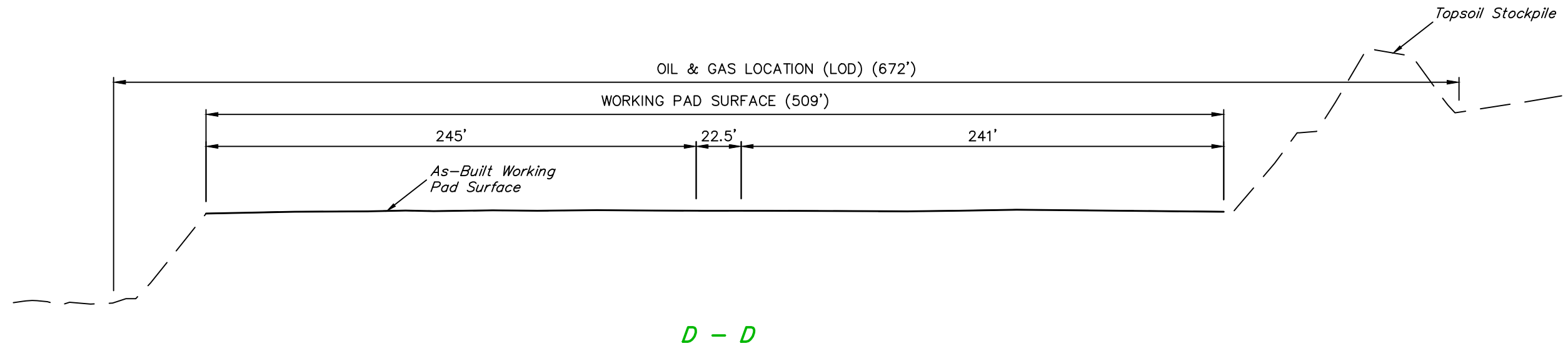
SKR #698-10-BV PAD
TRACT 72, SECTIONS 10 & 15, T6S, R98W, 6th P.M.
GARFIELD COUNTY, COLORADO

SURVEYED BY	DAYTON SLAUGH	06-29-23	SCALE
DRAWN BY	T.L.L.	07-10-23	AS SHOWN
CONSTRUCTION LAYOUT - CROSS SECTIONS			



UELS, LLC
Corporate Office * 85 South 200 East
Vernal, UT 84078 * (435) 789-1017

1" = 20'
X-Section
Scale
1" = 60'



REV: 2 11-16-23 T.L.L. (UPDATE LOD)

CHEVRON U.S.A. INC.

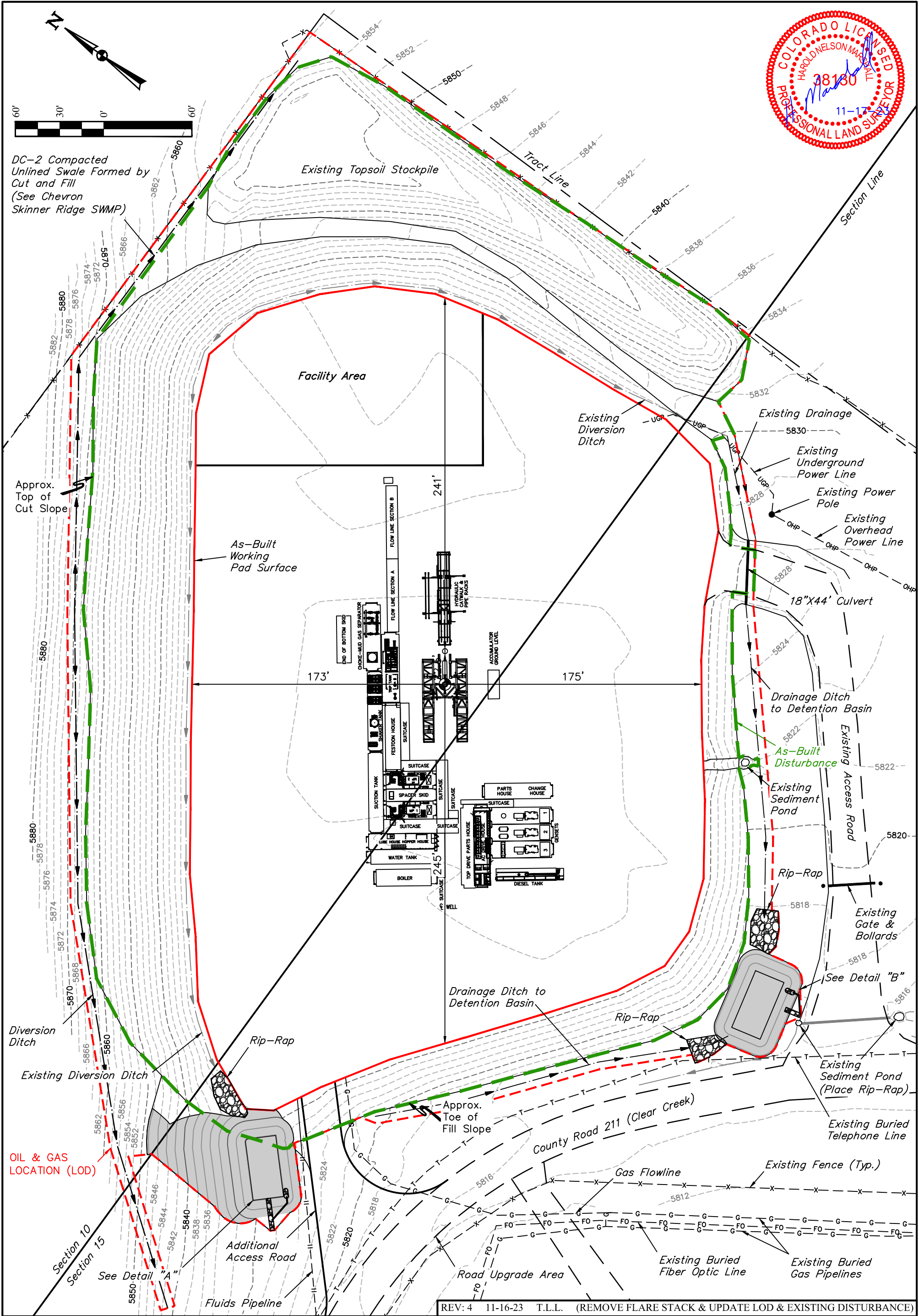
SKR #698-10-BV PAD
TRACT 72, SECTIONS 10 & 15, T6S, R98W, 6th P.M.
GARFIELD COUNTY, COLORADO

SURVEYED BY	DAYTON SLAUGH	06-29-23	SCALE
DRAWN BY	T.L.L.	07-10-23	AS SHOWN

CONSTRUCTION LAYOUT - CROSS SECTIONS



UELS, LLC
Corporate Office * 85 South 200 East
Vernal, UT 84078 * (435) 789-1017



DC-2 Compacted
Unlined Swale Formed by
Cut and Fill
(See Chevron
Skinner Ridge SWMP)

Approx.
Top of
Cut Slope

As-Built
Working
Pad Surface

Existing
Diversion
Ditch

Existing Drainage

Existing
Underground
Power Line

Existing Power
Pole

Existing Overhead
Power Line

18"X44' Culvert

Drainage Ditch to
Detention Basin

As-Built
Disturbance

Existing
Sediment
Pond

Rip-Rap

Existing
Gate &
Bollards

See Detail "B"

Existing
Sediment
Pond
(Place Rip-Rap)

Existing Buried
Telephone Line

Existing Fence (Typ.)

Existing Buried
Fiber Optic Line

Existing Buried
Gas Pipelines

Diversion
Ditch

Existing Diversion Ditch

OIL & GAS
LOCATION (LOD)

Additional
Access Road

Fluids Pipeline

Drainage Ditch to
Detention Basin

Rip-Rap

Approx.
Toe of
Fill Slope

County Road 211 (Clear Creek)

Road Upgrade Area

REV: 4

11-16-23

T.L.L.

(REMOVE FLARE STACK & UPDATE LOD & EXISTING DISTURBANCE)

NOTES:
• Contours shown at 2' intervals.

CHEVRON U.S.A. INC.

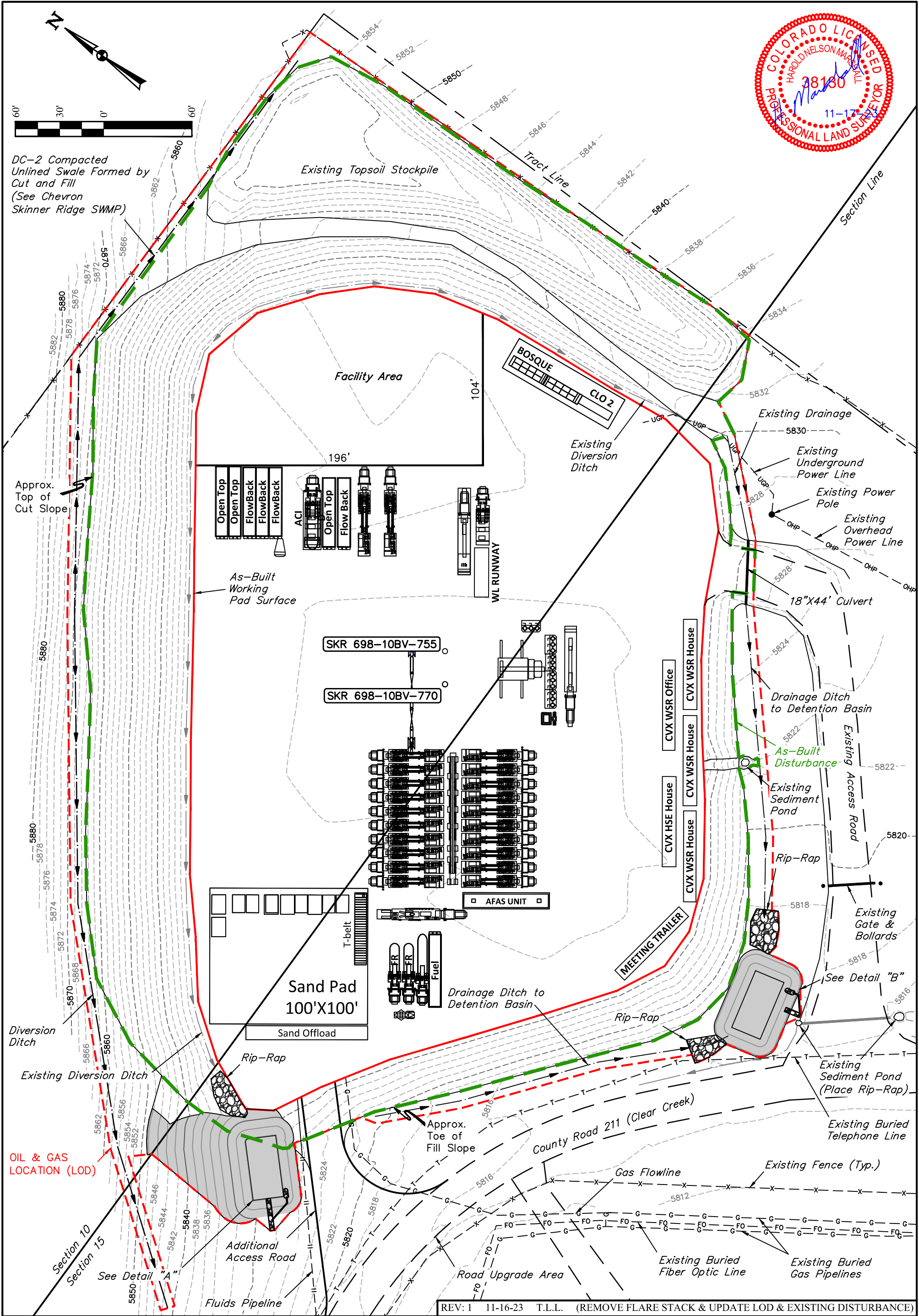
SKR #698-10-BV PAD
TRACT 72, SECTIONS 10 & 15, T6S, R98W, 6th P.M.
GARFIELD COUNTY, COLORADO

SURVEYED BY	DAYTON SLAUGH	06-29-23	SCALE
DRAWN BY	T.L.L.	07-10-23	1" = 60'

PRELIMINARY DRILL RIG LAYOUT



UELS, LLC
Corporate Office * 85 South 200 East
Vernal, UT 84078 * (435) 789-1017



NOTES:
• Contours shown at 2' intervals.

CHEVRON U.S.A. INC.

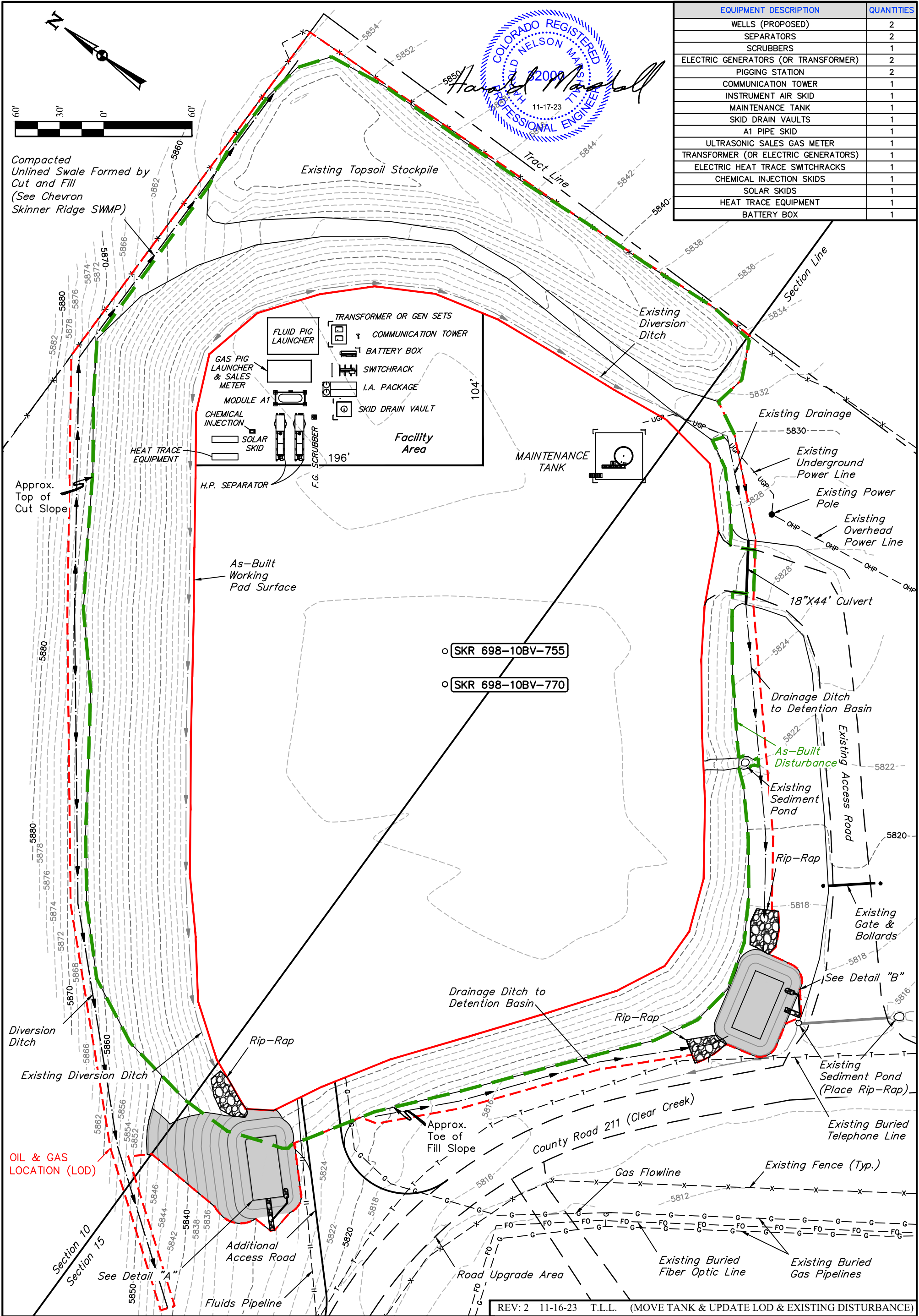
SKR #698-10-BV PAD
TRACT 72, SECTIONS 10 & 15, T6S, R98W, 6th P.M.
GARFIELD COUNTY, COLORADO

SURVEYED BY	DAYTON SLAUGH	06-29-23	SCALE
DRAWN BY	T.L.L.	010-25-23	1" = 60'
PRELIMINARY HYDRAULIC STIMULATION LAYOUT			



UELS, LLC
Corporate Office * 85 South 200 East
Vernal, UT 84078 * (435) 789-1017

REV: 1 11-16-23 T.L.L. (REMOVE FLARE STACK & UPDATE LOD & EXISTING DISTURBANCE)



EQUIPMENT DESCRIPTION	QUANTITIES
WELLS (PROPOSED)	2
SEPARATORS	2
SCRUBBERS	1
ELECTRIC GENERATORS (OR TRANSFORMER)	2
PIGGING STATION	2
COMMUNICATION TOWER	1
INSTRUMENT AIR SKID	1
MAINTENANCE TANK	1
SKID DRAIN VAULTS	1
A1 PIPE SKID	1
ULTRASONIC SALES GAS METER	1
TRANSFORMER (OR ELECTRIC GENERATORS)	1
ELECTRIC HEAT TRACE SWITCHRACKS	1
CHEMICAL INJECTION SKIDS	1
SOLAR SKIDS	1
HEAT TRACE EQUIPMENT	1
BATTERY BOX	1

REV: 2 11-16-23 T.L.L. (MOVE TANK & UPDATE LOD & EXISTING DISTURBANCE)

CHEVRON U.S.A. INC.

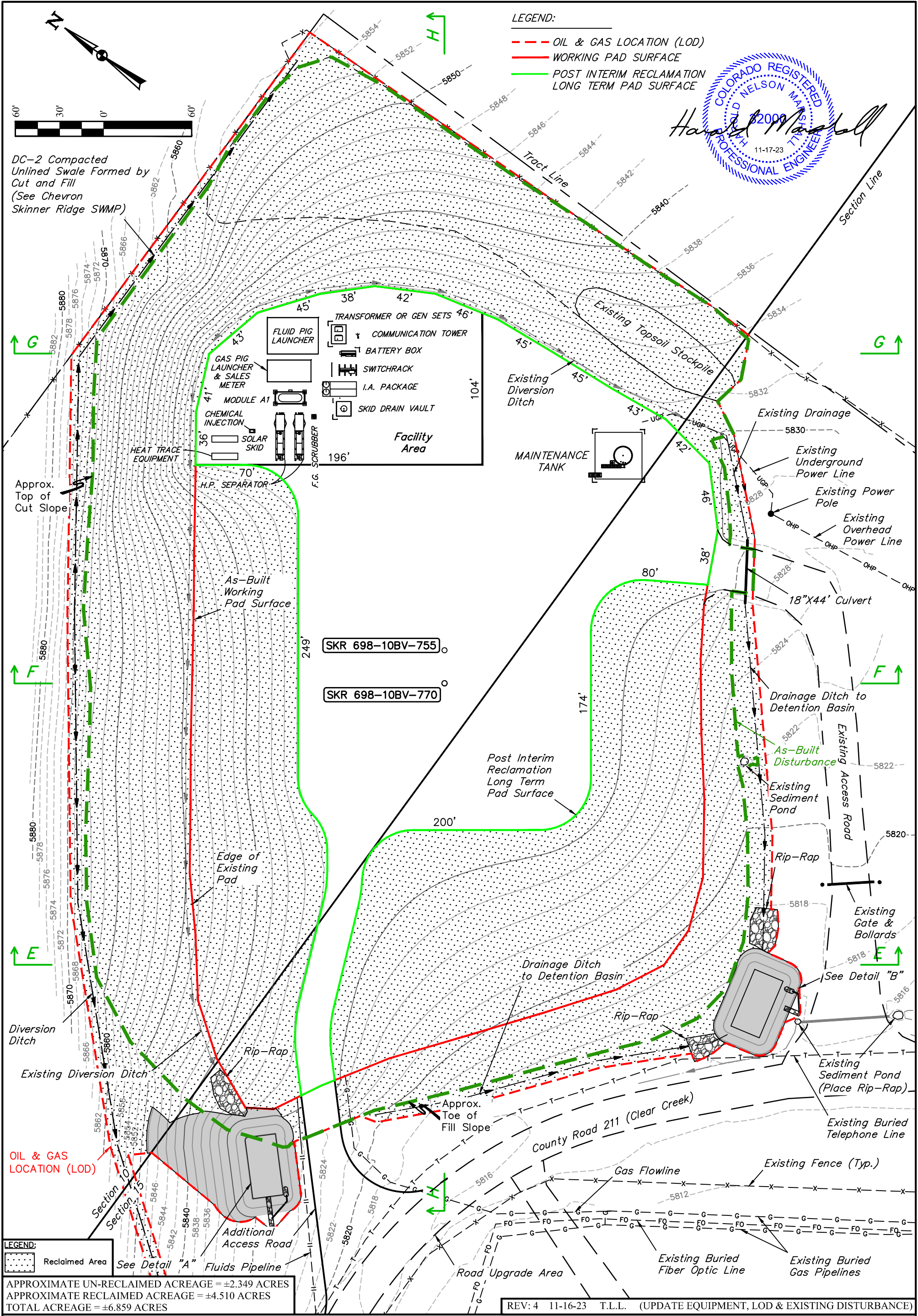
SKR #698-10-BV PAD
TRACT 72, SECTIONS 10 & 15, T6S, R98W, 6th P.M.
GARFIELD COUNTY, COLORADO

SURVEYED BY	DAYTON SLAUGH	06-29-23	SCALE
DRAWN BY	T.L.L.	07-10-23	1" = 60'

FACILITY LAYOUT



UELS, LLC
Corporate Office * 85 South 200 East
Vernal, UT 84078 * (435) 789-1017



NOTES:

- Contours shown at 2' intervals.

	Length (ft)	Width (ft)
Proposed Gas Flowline Disturbance (Within LOD) (To Be Reclaimed)	±30'	N/A
Proposed Gas Flowline Disturbance (Outside LOD) (To Be Reclaimed)	±207'	80
Proposed Fluids Pipeline Disturbance (Within LOD) (To Be Reclaimed)	±30'	N/A
Proposed Fluids Pipeline Disturbance (Outside LOD) (To Be Reclaimed)	±4,981'	80

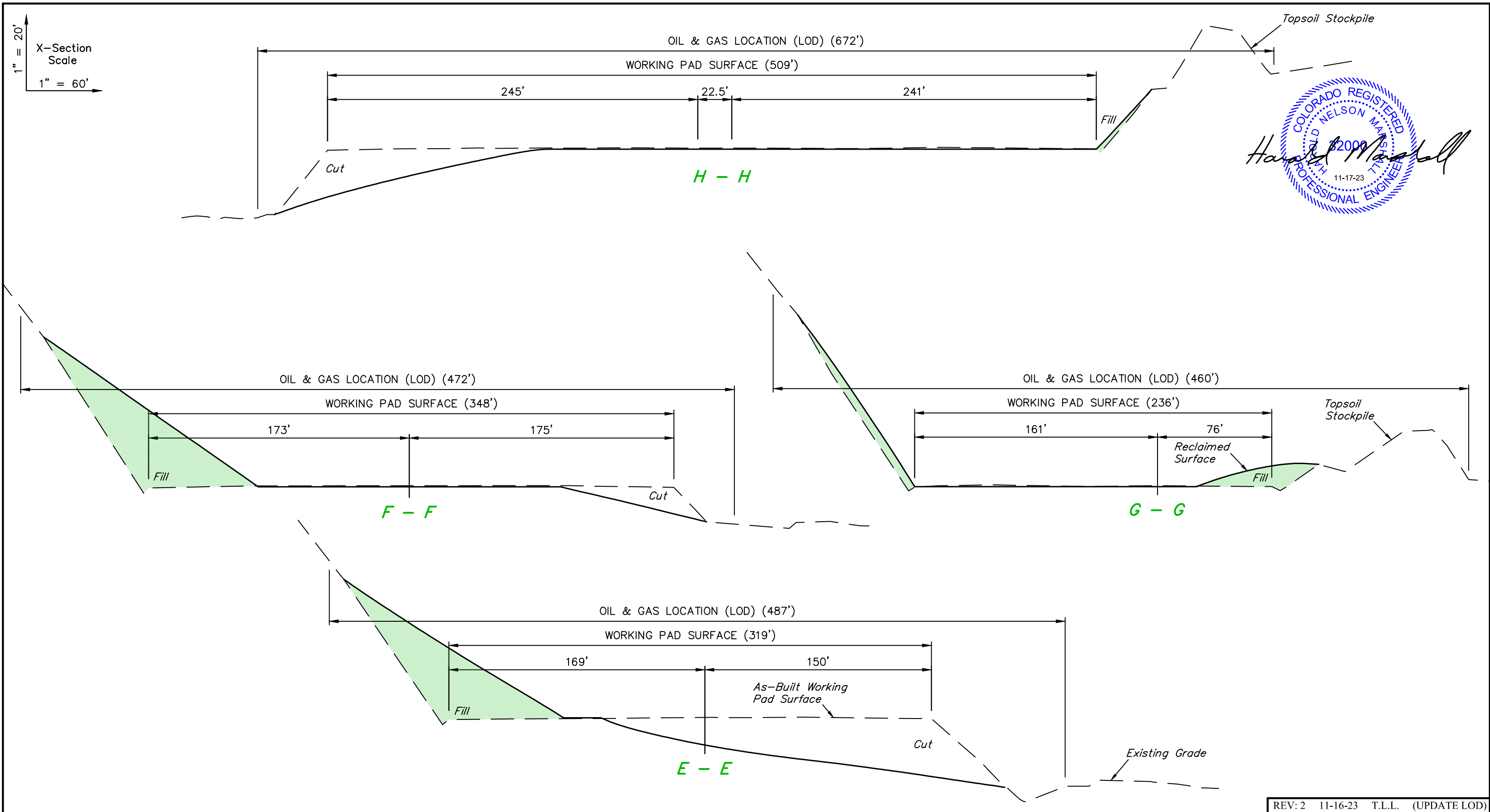
CHEVRON U.S.A. INC.

SKR #698-10-BV PAD
TRACT 72, SECTIONS 10 & 15, T6S, R98W, 6th P.M.
GARFIELD COUNTY, COLORADO

SURVEYED BY	DAYTON SLAUGH	06-29-23	SCALE
DRAWN BY	T.L.L.	07.10-23	1" = 60'

INTERIM RECLAMATION LAYOUT

UELS, LLC
Corporate Office * 85 South 200 East
Vernal, UT 84078 * (435) 789-1017



REV: 2 11-16-23 T.L.L. (UPDATE LOD)

CHEVRON U.S.A. INC.

SKR #698-10-BV PAD
TRACT 72, SECTIONS 10 & 15, T6S, R98W, 6th P.M.
GARFIELD COUNTY, COLORADO

SURVEYED BY	DAYTON SLAUGH	06-29-23	SCALE
DRAWN BY	T.L.L.	07-10-23	AS SHOWN
INTERIM RECLAMATION - CROSS SECTIONS			



UELS, LLC
 Corporate Office * 85 South 200 East
 Vernal, UT 84078 * (435) 789-1017