



## **Transportation Plan**

Date: 11/10/2023

Location: OGDG SKR 698-10-BV / SKR 698-10-BV Pad

Legal Description: Tract 72, SWSW of Section 10 & NWNW of Section 15, Township 6 South, Range 98 West, 6<sup>th</sup> P.M., Garfield County, Colorado

### **Location Details**

Chevron has initiated an oil and gas permit with Garfield County, and a pre-application meeting was held on October 12, 2023. During the pre-application meeting, Chevron provided access routes and other pertinent information related to traffic and transportation to Garfield County and other participants (ECMC, CPW, and CDPHE). As a result of these consultations, the access route provided in the enclosed Haul Route Map was agreed to by all parties, and Chevron committed to continuing the beneficial relationship with Garfield County regarding maintenance of CR 211.

The approved access road and haul route are provided as attachments, and specific details of that approval are as follows –

- Access to the SKR 698-10-BV Pad from public roads will be from County Road 211 (Clear Creek Road). Chevron commits to continuing the beneficial relationship with Garfield County regarding maintenance of CR 211.

The following table provides an estimate of the traffic associated with the various phases of development for the SKR 698-10-BV Pad.

<b>SKR-698-10 BV Pad Baseline Traffic Summary</b>			
Phase	Heavy Truck Trips per Location	Light Truck Trips per Location	SKR-698-10-BV Cumulative Trips
Construction	207	98	304
Drilling	6,944	7,164	14,108
Completions	2,512	1,438	3,950
Interim Reclamation	465	50	515
Production <sup>1</sup>	0	10,950	10,950

**BMP:**

- At the time of construction, all leasehold roads shall be constructed to accommodate local emergency vehicle access requirements and shall be maintained in a reasonable condition.
- Flowlines from the well pad to the production facilities will be constructed prior to starting flowback operations to eliminate truck traffic associated with flowback and production.
- Production operations are continuously monitored remotely from Chevron's Operations Control Center (OCC) to minimize the need for personnel to drive to the location.
- A speed limit of 20 MPH will be enforced on the unpaved private roads.
- Chevron will employ practices for control of fugitive dust caused by operations, including speed restrictions, regular road maintenance, restriction of construction activity during high wind days, and silica dust controls when handling sand used in hydraulic fracturing operations. Additional management practices such as road surfacing, wind breaks and barriers, or automation of wells to reduce truck traffic may also be used to minimize fugitive dust emissions.

**Attachments:**

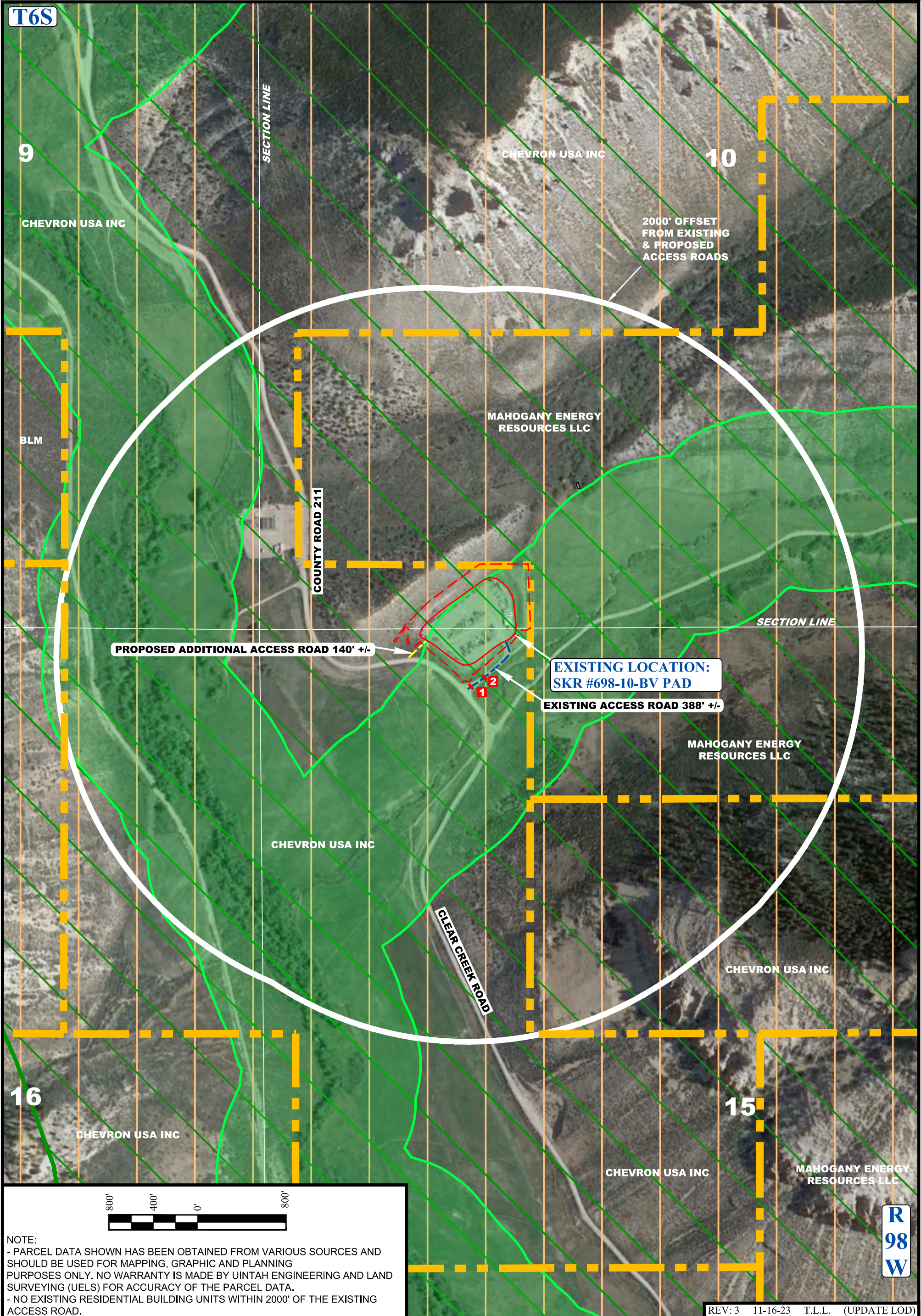
Access Road Map

Haul Route Map

---

<sup>1</sup> Production trips will be combined for multiple locations within the Piceance Basin whenever possible.





NOTE:  
- PARCEL DATA SHOWN HAS BEEN OBTAINED FROM VARIOUS SOURCES AND SHOULD BE USED FOR MAPPING, GRAPHIC AND PLANNING PURPOSES ONLY. NO WARRANTY IS MADE BY UINTAH ENGINEERING AND LAND SURVEYING (UELS) FOR ACCURACY OF THE PARCEL DATA.  
- NO EXISTING RESIDENTIAL BUILDING UNITS WITHIN 2000' OF THE EXISTING ACCESS ROAD.

**LEGEND**

	WORKING PAD SURFACE		AQUATIC SPORTFISH MANAGEMENT WATERS
	OIL & GAS LOCATION (LOD)		ELK SEVERE WINTER RANGE
	PROPOSED ADDITIONAL ACCESS ROAD		ELK WINTER CONCENTRATION AREA
	EXISTING ACCESS ROAD		

EXISTING 18" CULVERT  
 EXISTING GATE

**CHEVRON U.S.A. INC.**

**SKR #698-10-BV PAD**  
**TRACT 72, SECTIONS 10 & 15, T6S, R98W, 6th P.M.**  
**GARFIELD COUNTY, COLORADO**

<b>SURVEYED BY</b>	DAYTON SLAUGH	06-29-23	<b>SCALE</b>
<b>DRAWN BY</b>	T.L.L.	07-10-23	1" = 500'

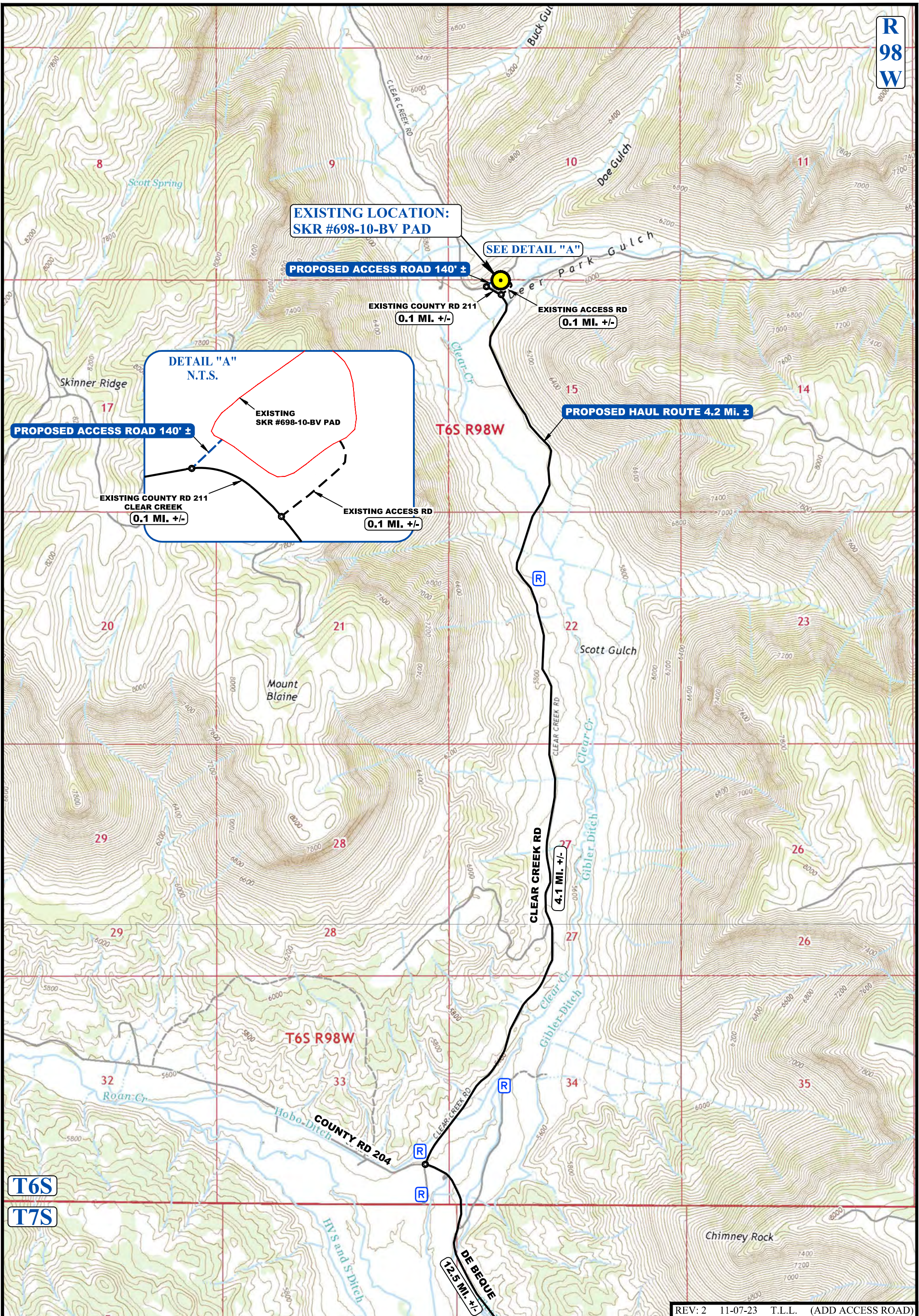
**ACCESS ROAD MAP**

**UELTS, LLC**  
Corporate Office \* 85 South 200 East  
Vernal, UT 84078 \* (435) 789-1017

REV: 3 11-16-23 T.L.L. (UPDATE LOD)



R  
98  
W



EXISTING LOCATION:  
SKR #698-10-BV PAD

SEE DETAIL "A"

PROPOSED ACCESS ROAD 140' ±

EXISTING COUNTY RD 211  
0.1 MI. +/-

EXISTING ACCESS RD  
0.1 MI. +/-

DETAIL "A"  
N.T.S.

PROPOSED ACCESS ROAD 140' ±

EXISTING COUNTY RD 211  
CLEAR CREEK  
0.1 MI. +/-

EXISTING ACCESS RD  
0.1 MI. +/-

PROPOSED HAUL ROUTE 4.2 MI. ±

T6S R98W

CLEAR CREEK RD  
4.1 MI. +/-

T6S R98W

COUNTY RD 204

T6S

T7S

REV: 2 11-07-23 T.L.L. (ADD ACCESS ROAD)

**LEGEND:**

- EXISTING LOCATION
- RESIDENTIAL BUILDING UNIT

2000' 1000' 0' 2000'

**UELS, LLC**  
Corporate Office \* 85 South 200 East  
Vernal, UT 84078 \* (435) 789-1017

**CHEVRON U.S.A. INC.**

**SKR #698-10-BV PAD**  
**TRACT 72, SECTIONS 10 & 15, T6S, R98W, 6th P.M.**  
**GARFIELD COUNTY, COLORADO**

SURVEYED BY	DAYTON SLAUGH	06-29-23	SCALE
DRAWN BY	T.L.L.	03-22-23	1" = 2000'

**HAUL ROUTE MAP**