



FORM F-106



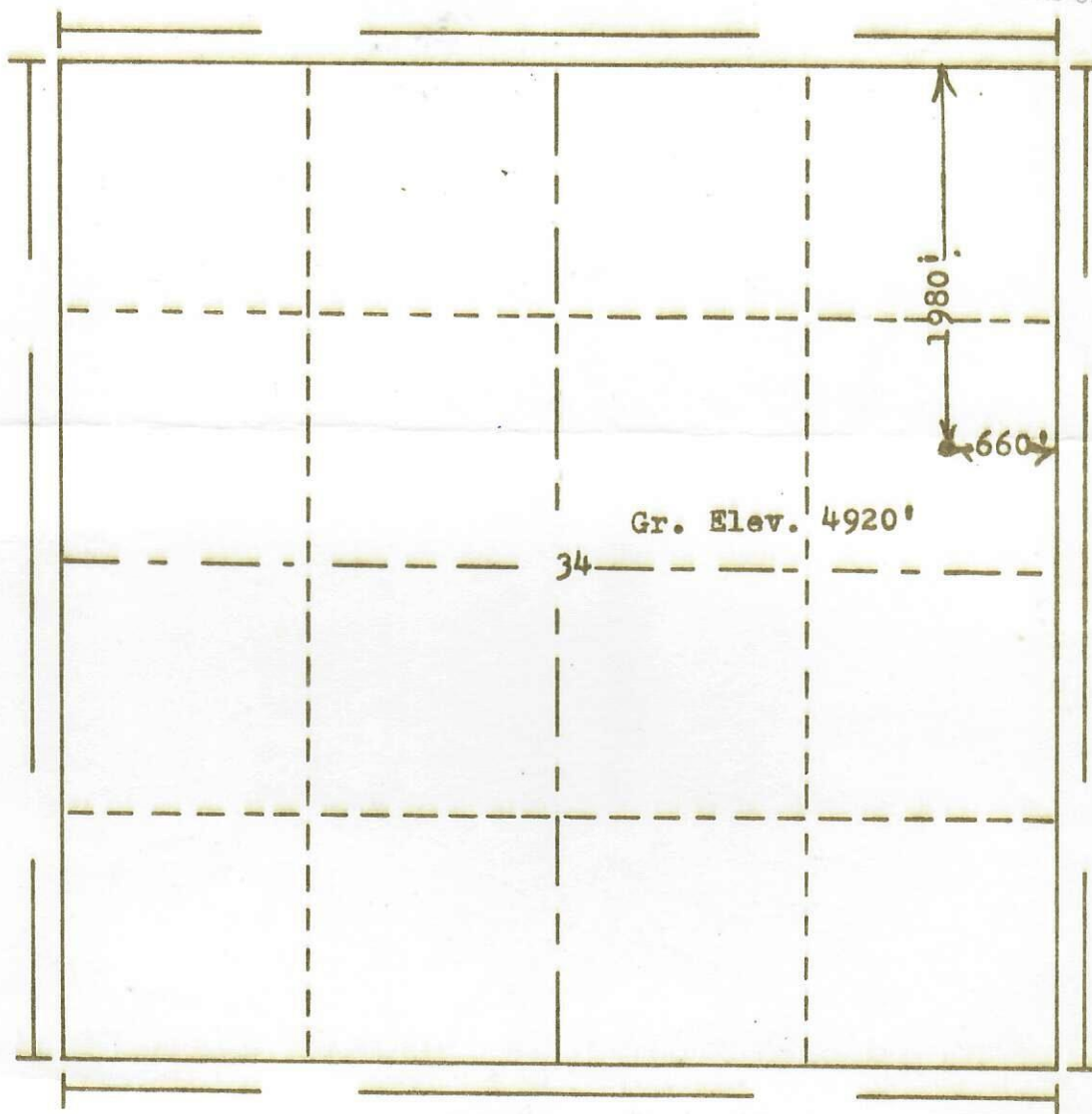
00217042

RECEIVED

DEC 30 1974

COLD. OIL &amp; GAS CONS. COMM.

R. 67W



74-1054

Scale... 1" = 1000'

Powers Elevation Company, Inc. of Denver, Colorado  
has in accordance with a request from Mr. Snyder  
for Marlin Oil Co.

determined the location of No. 1 Canal  
to be CSE NE Section 34 Township 7N  
Range 67W of the 6th Principal Meridian  
Weld County, Colorado

I hereby certify that this plat is an  
accurate representation of a correct  
survey showing the location of

Date: 12-19-74

Brian J. Hall  
Licensed Land Surveyor No. 2853  
State of Colorado