



SITE NAME: GreenLeaf 16N-15HZ							DATE: 9/25/2023	REM. PROJECT #:	WEATHER: SUNNY 80		
SITE DIRECTIONS: 8.5 MILES PAST CR 41 ON CR22							CLIENT: Oxy				
LEGALS AND LAT/LONG: 40.145469,-104649567							TASMAN PERSONNEL: David Erwin				
SOIL TYPES: Well Graded Gravel - GW							SURFACE GRADIENT: North				
SOIL SAMPLING							FACILITY INFRASTRUCTURE				
Date/Time	Soil Sample ID	PID (ppm)	Visual	Olfactory	Photo?	Grab or Lab Sample?	EQUIPMENT		Quantity		
							Above Ground Storage Tank (AST)				
9/25/2023 11:33	B01@3"	171.1	HC Staining	HC Odor	Yes	Lab	Buried or Partially Buried Vessel				
9/25/2023 11:35	BG01@3"	1.4	No Staining	No Odor	Yes	Lab	Separator				
9/25/2023 11:37	BG02@3'	2.8	No Staining	No Odor	Yes	Lab	Emission Control Device (ECD)				
9/25/2023 11:39	BG03@3"	1.7	No Staining	No Odor	Yes	Lab	Dump Line				
9/25/2023 11:41	BG04@3"	0.8	No Staining	No Odor	Yes	Lab	Wellhead				
12/28/2023 10:45	B02@6'	11.0	No Staining	No Odor	Yes	Lab	Flowline				
12/28/2023 10:47	B03@6'	0.8	No Staining	No Odor	Yes	Lab	Other:				
12/28/2023 10:49	N01@4'	0.4	No Staining	No Odor	Yes	Lab	Soil Loads Removed				
12/28/2023 10:51	S01@4'	0.4	No Staining	No Odor	Yes	Lab	IMPACTED SOIL IDENTIFIED?				
12/28/2023 10:53	E01@4'	3.4	No Staining	No Odor	Yes	Lab	ESTIMATED VOLUME OF IMPACTS:				
12/28/2023 10:55	E02@4'	0.4	No Staining	No Odor	Yes	Lab	Date		Number		CY
12/28/2023 10:57	W01@4'	0.6	No Staining	No Odor	Yes	Lab					
12/28/2023 10:59	W02@4'	0.5	HC Staining	No Odor	Yes	Lab					
							Total Removed		0		0
							Disposal Facility:				
							Groundwater Recovery				
							DATE GW ENCOUNTERED:			DEPTH:	
							GROUNDWATER IN CONTACT WITH IMPACTED SOIL?				
							LNAPL OR SHEEN OBSERVED ON GW?				
GROUNDWATER SAMPLING							Date		BBLs		
Date/Time	Groundwater Sample ID	Depth Collected	Turbid?	Sheen?	Odor?	Photo?					
							Total Removed		0		
							Disposal Facility:				

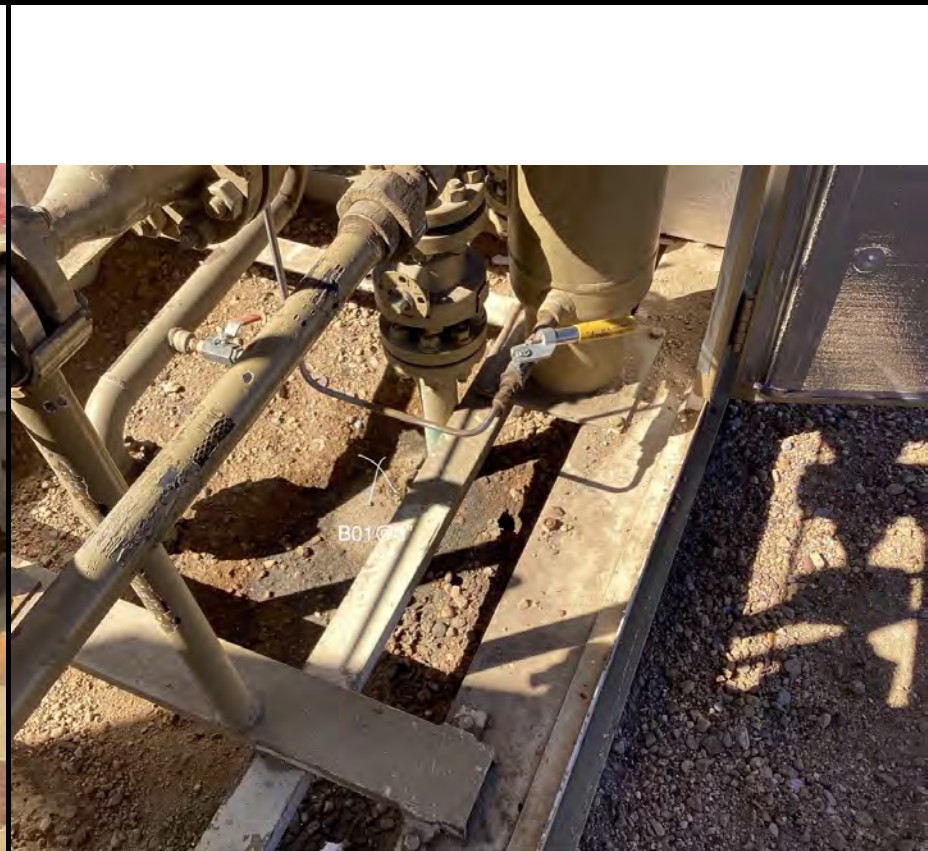
Photographic Log



Equipment ID:		Equipment Type:	
Material:	Volume:	Contents:	
Notes/Conditions:			

Equipment ID:		Equipment Type:	
Material:	Volume:	Contents:	
Notes/Conditions:			

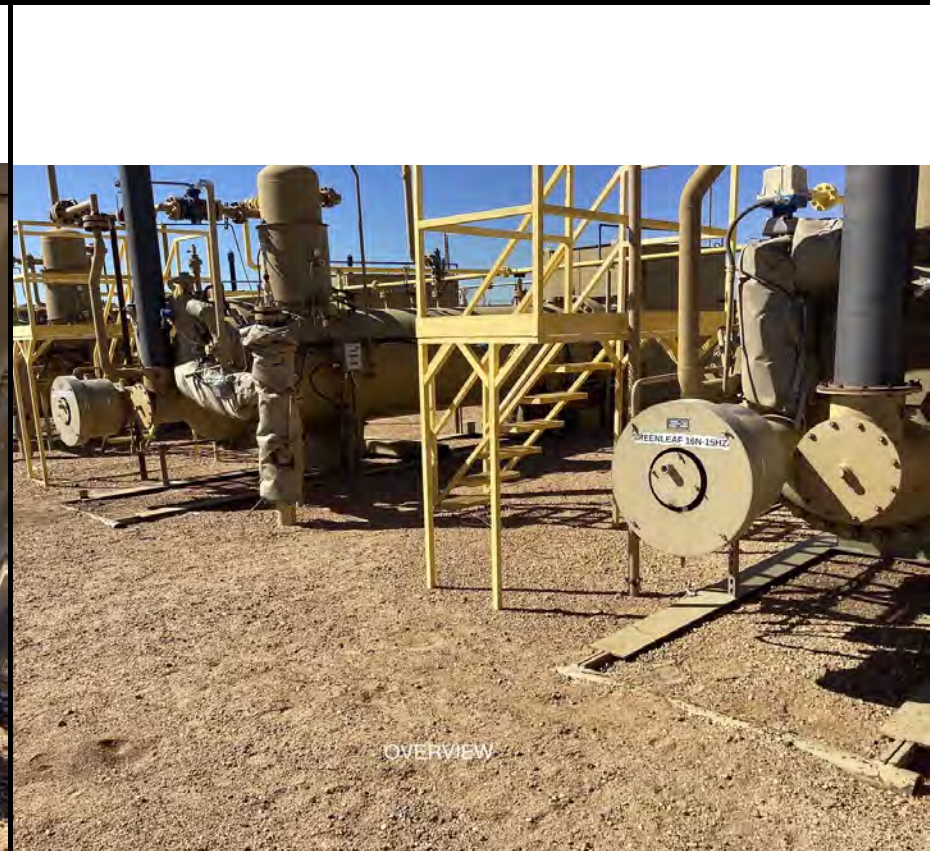
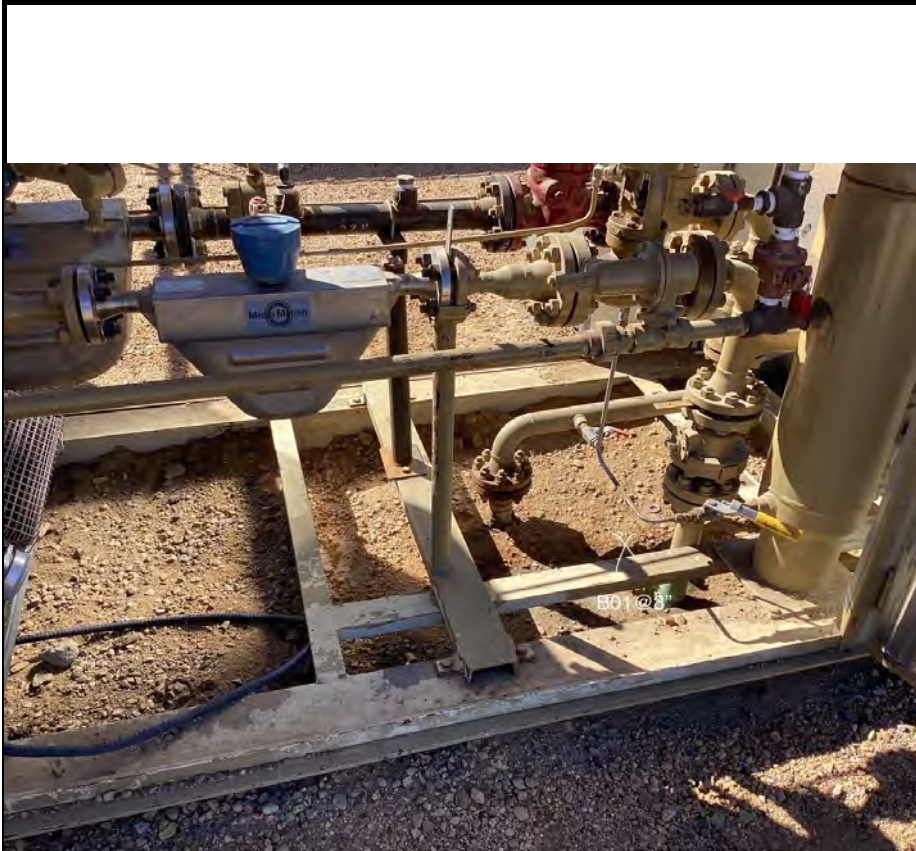
Photographic Log



Equipment ID:		Equipment Type:	
Material:	Volume:	Contents:	
Notes/Conditions:			

Equipment ID:		Equipment Type:	
Material:	Volume:	Contents:	
Notes/Conditions:			

Photographic Log



Equipment ID:		Equipment Type:	
Material:	Volume:	Contents:	
Notes/Conditions:			

Equipment ID:		Equipment Type:	
Material:	Volume:	Contents:	
Notes/Conditions:			

Photographic Log



Equipment ID:		Equipment Type:	
Material:	Volume:	Contents:	
Notes/Conditions:			

Equipment ID:		Equipment Type:	
Material:	Volume:	Contents:	
Notes/Conditions:			

Photographic Log



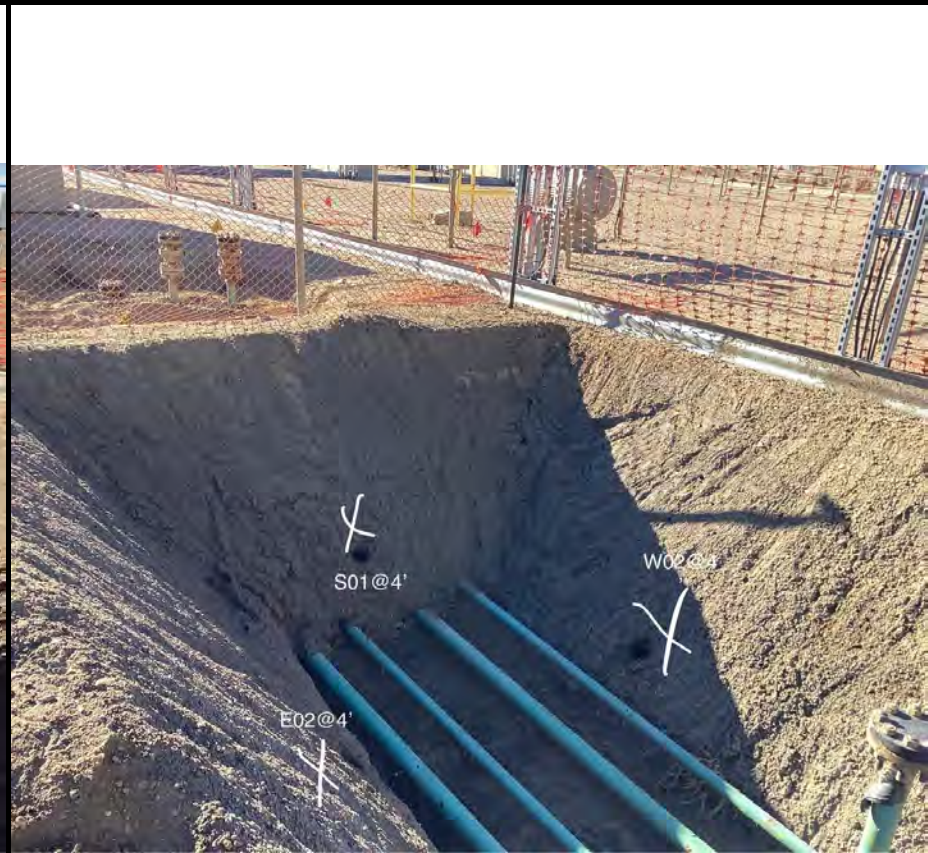
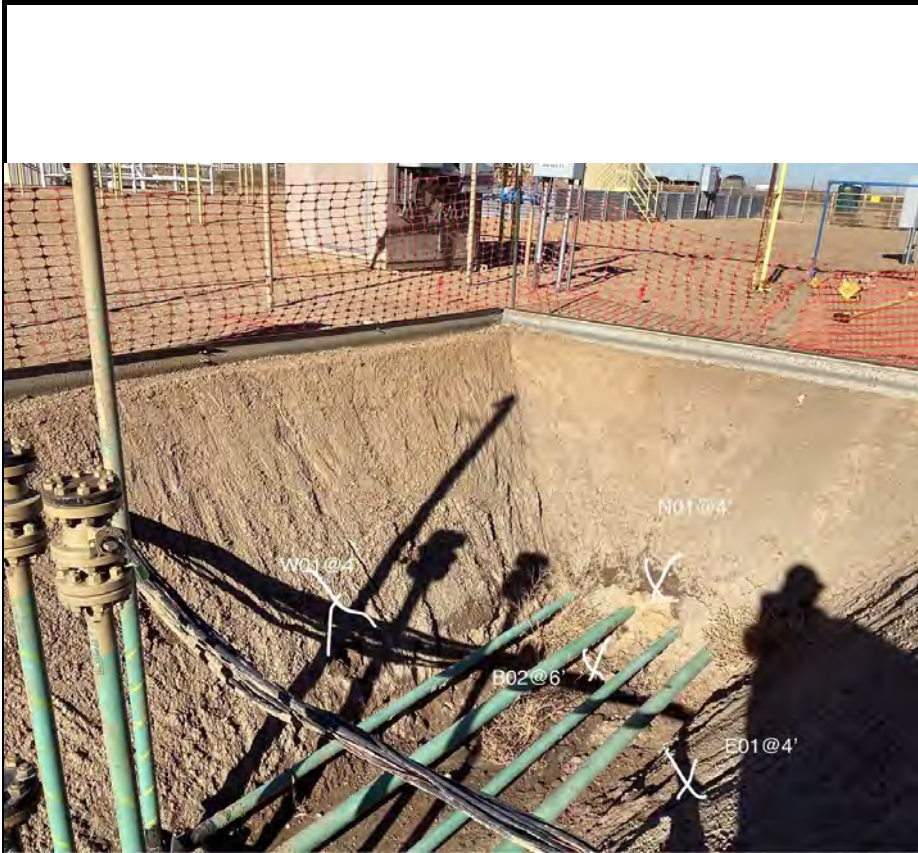
Blank space for notes or additional information.

Equipment ID:		Equipment Type:		Equipment ID:		Equipment Type:	
Material:	Volume:	Contents:		Material:	Volume:	Contents:	
Notes/Conditions:				Notes/Conditions:			

Photographic Log

							
Equipment ID:		Equipment Type:		Equipment ID:		Equipment Type:	
Material:	Volume:	Contents:	Material:	Volume:	Contents:		
Notes/Conditions:			Notes/Conditions:				

Photographic Log





Equipment ID:	Equipment Type:		
Material:	Volume:	Contents:	

Equipment ID:	Equipment Type:		
Material:	Volume:	Contents:	

Notes/Conditions:

Notes/Conditions:

Photographic Log

					
Material:	Volume:	Contents:	Material:	Volume:	Contents:
Notes/Conditions:			Notes/Conditions:		