



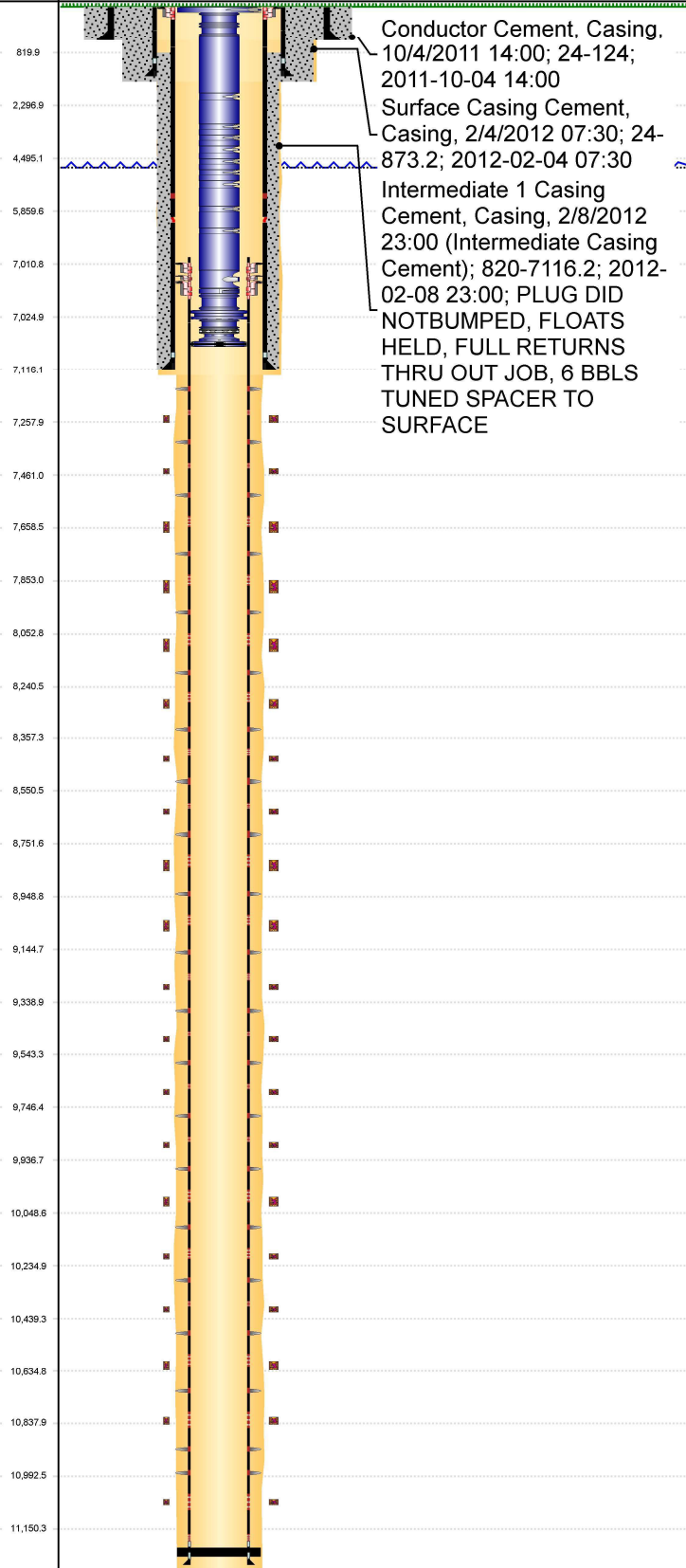
P&A Wellbore For State

Well Name: SHOEMAKER AA07-65HN

Original Hole [Land]

MD
(ftK
B)

Vertical schematic (actual)



Well Header

Surface UWI 0512334606	Business Unit Rockies	Gov Auth Dist	Prod Tree Loc Land
Orig. KB to Gnd (ft) 24.00	Original Spud Date 2/3/2012	Abandon Date	Well Sub-Status PR
High... N			
Comment			

Surface Location (Congressional)

Qtr 3 NE	Qtr 4 SE	Section 12	Twrsht... 6	Twrsht... N	Range 64	Ring E/... W	Latitude (°) 40.49922683	Longitude (°) -104.490749347
-------------	-------------	---------------	----------------	----------------	-------------	-----------------	-----------------------------	---------------------------------

Wellbore Sections

Section Des	Hole Size (in)	Top Depth (ftKB)	Btm Depth (ftKB)
CONDUCTOR	19	24.0	124.0
SURFACE	13 3/4	124.0	882.0
INTERMEDIATE	8 3/4	882.0	7,126.0
PRODUCTION	6 1/8	7,126.0	11,188.0

Casing Strings

Csg Des	Run Date	OD (in)	Wt/Len (lb/ft)	Grade	Top Depth (MD) (ftKB)	Set Depth (MD) (ftKB)
Conductor	12/20/2011	16	75.00	J-55	24	124
Surface	2/4/2012	9 5/8	36.00	J-55	24	873.2
Intermediate Casing 1	2/8/2012	7	26.00	P-110	24	7116.2
Production Casing	2/12/2012	4 1/2	11.60	P-110	7003.8	11170.7

Cement

Des	Start Date	Top (ftKB)	Btm (ftKB)
Conductor Cement	10/4/2011	24.0	124.0
Surface Casing Cement	2/4/2012	24.0	873.2
Intermediate Casing Cement	2/8/2012	820.0	7,116.2

Zone Statuses

Zone Name	Status Date	Status	Fluid Type	Job	Prod Method
NIOBRARA	3/22/2012	PR	Oil		Flowing
NIOBRARA	3/23/2012	PR	Water		Flowing

Stim/Frac Stage

Zone	Start Date	Top (ftKB)	Btm (ftKB)
	3/8/2012	7,257.0	7,258.0
	3/8/2012	7,460.0	7,461.0
	3/8/2012	7,658.0	7,659.0
	3/8/2012	7,853.0	7,854.0
	3/8/2012	8,055.0	8,056.0
	3/8/2012	8,251.0	8,252.0
	3/8/2012	8,448.0	8,449.0
	3/8/2012	8,645.0	8,646.0
	3/8/2012	8,848.0	8,849.0
	3/8/2012	9,046.0	9,047.0
	3/8/2012	9,249.0	9,250.0
	3/8/2012	9,453.0	9,454.0
	3/8/2012	9,657.0	9,658.0
	3/8/2012	9,852.0	9,853.0
	3/8/2012	10,045.0	10,046.0
	3/8/2012	10,231.0	10,232.0
	3/8/2012	10,436.0	10,437.0
	3/8/2012	10,634.0	10,635.0
	3/8/2012	10,837.0	10,838.0
NIOBRARA, Original Hole	3/8/2012	11,090.0	11,091.0
NIOBRARA, Original Hole	9/26/2011		

Other In Hole

Run Date	Des	Make	OD (in)	Top (ftKB)	Btm (ftKB)

Logs

Date	Type	Depth Top (MD) (ftKB)	Btm (ftKB)
2/4/2012	MUD LOG VERTICAL	85	6,000.0
2/6/2012	MUD LOG HORIZONTAL	6,000	11,188.0
3/1/2012	CBL/CCL/GR	24	6,825.0



P&A Wellbore For State

Well Name: SHOEMAKER AA07-65HN

Original Hole [Land]

Wellbore Plug Back Total Depths

Date	Type	Com	PBTD (ftKB)
2/12/2012	FLOAT COLLAR	FLOAT COLLAR	11,169

MD
(ftK
B)

Vertical schematic (actual)

