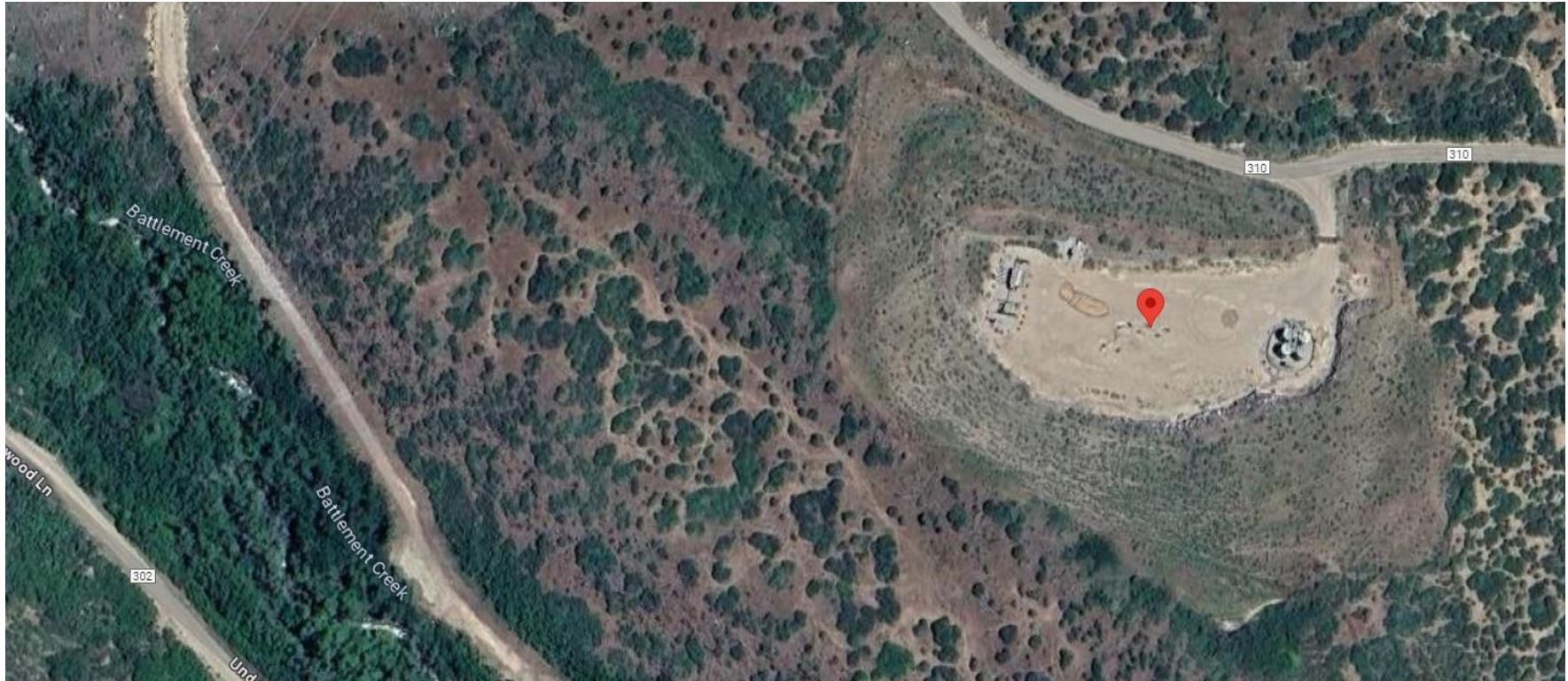


Storm Water Management and Erosion control
Location Name: CAERUS PICEANCE LLC Warren 15-9 (PI15) Pad
Location #: 334751



**Location Overview: Location is within High
Priority/Density/NSO/Black Bear Habitat areas. Location is
approximately 179 yards from Battlement Creek. Location is
in close proximity to Rule 411a Surface Water External Buffer.
Section/Township/Range: 15 7S95W**



COLORADO
Energy & Carbon Management
Commission
Department of Natural Resources

Storm water Management and Erosion control
Location Name: CAERUS PICEANCE LLC Warren 15-9 (PI15) Pad
Location #: 334751



North West corner of location.



North East corner of location.



South West corner of location.



South East corner of location.

Storm water Management and Erosion control
Location Name: CAERUS PICEANCE LLC Warren 15-9 (PI15) Pad
Location #: 334751



Photo # 5659 From inspection 708903684 conducted on 05/02/2024 Failure to maintain chemical BMP/chemical containment approximately 3/4 full of fluid/BMP insufficient to contain possible spill.



Photo # 6015 Failure to maintain chemical BMP/chemical containment approximately 3/4 to 7/8 full of fluid/BMP insufficient to contain possible spill.