



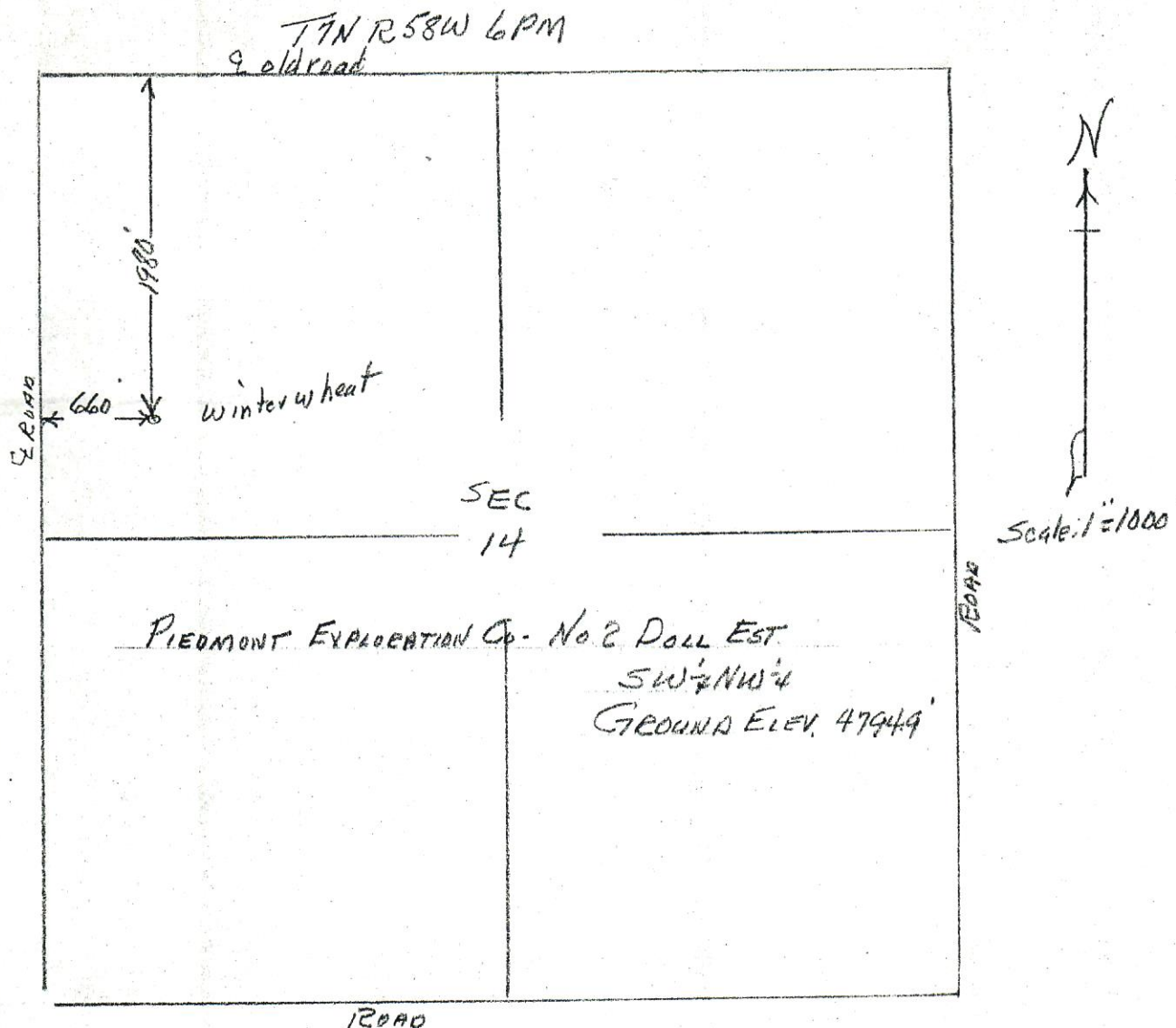
00204749

BEST COPY
AVAILABLECERTIFICATE OF SURVEY
for
Piedmont Exploration Co.
Weld County, Colorado

RECEIVED

MAY 13 1981

COLO. OIL & GAS CONS. COMM.



I hereby certify that the above plat is an accurate representation of a correct survey showing the location of Piedmont Exploration Co.- No. 2 Doll Est. Oilwell in SW 1/4 NW 1/4 Sec. 14 T7N R58W 6PM. The elevation of the ground at the stake is 4794.9 feet above sea level from U.S.G.S. Bench Mark.

Fert Morgan, Colorado
May 6, 1981
Registered Professional Engineer
State of Colorado