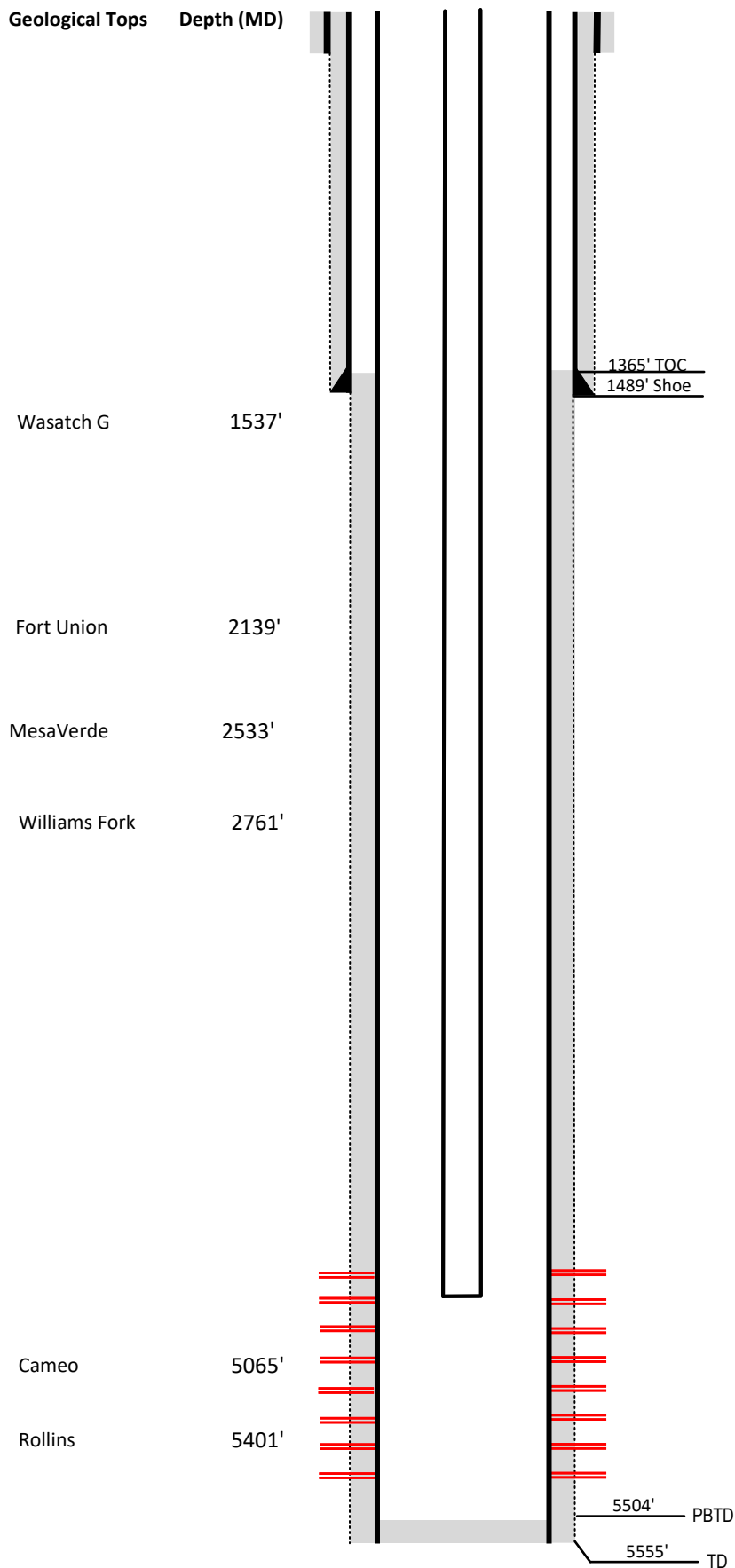


# Laramie Energy

Current Wellbore Diagram

Not to scale

FEDERAL WELL: YES  NO



<b>Well Name</b>	LL & CC # 17-4A
<b>API</b>	05-077-09431-00
<b>Surface Location</b>	SWNW Sec 17 T10S R94W
<b>GPS Coordinates</b>	39.192771, -107.910959
<b>County, State</b>	Mesa County, Co
<b>Diagram Date</b>	2/20/2023

Hole	24" @ 20'
Conductor	16" @ 20'
Cement	Surface

<b>Surface Hole</b>	12.25" @ 1513'
Casing	8 5/8" 32# J-55 @ 1513'
Cement	420 sks
TOC	Surface

<b>Production Hole</b>	7.785" @ 5550'
Casing	4 1/2" 11.6# I-80 @ 5550'
Cement	701 sks
TOC	1365'

<b>Tubing</b>	2 3/8" J-55 EUE @ 4613'
---------------	-------------------------

Perforations	Top	Bottom
	4585'	4996'