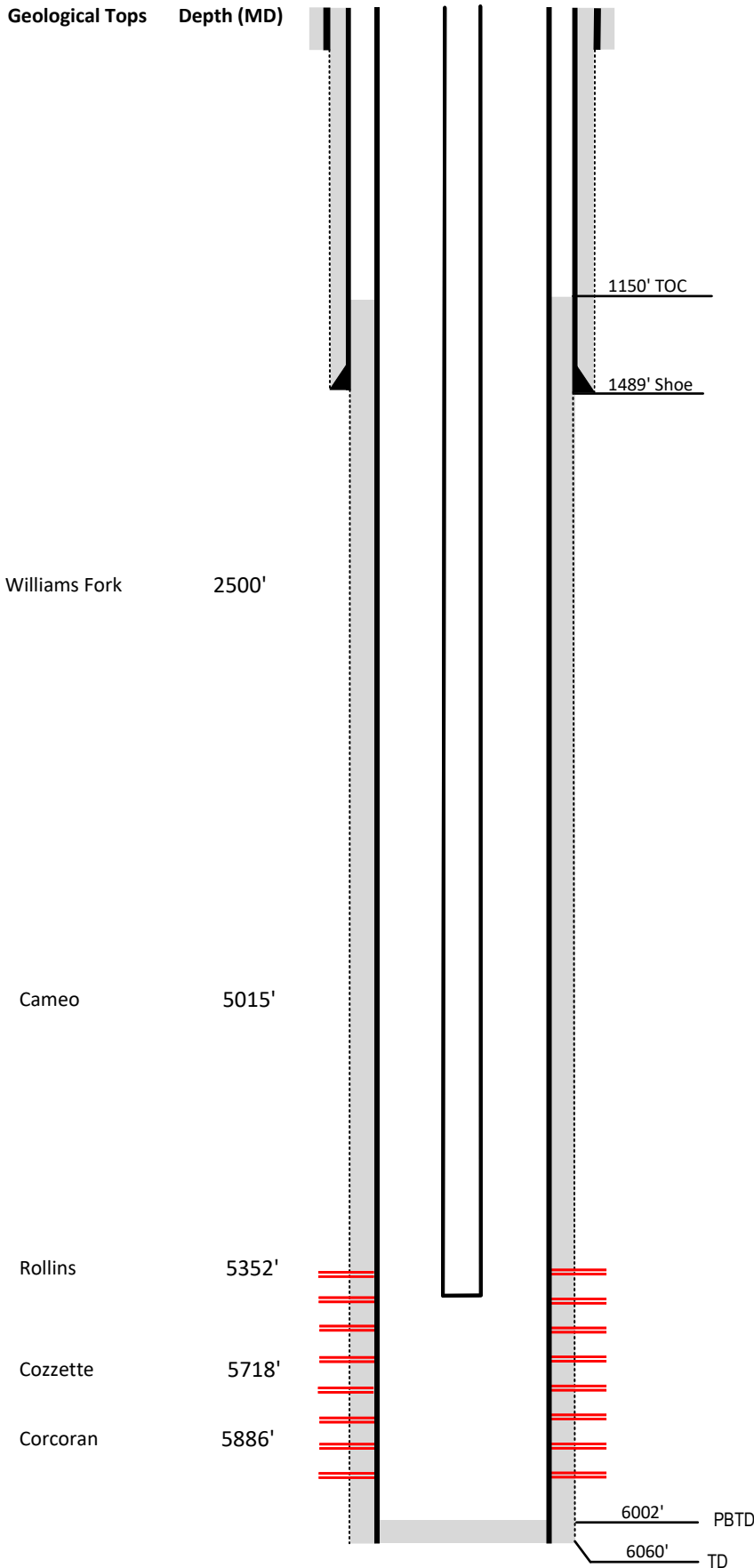


Laramie Energy

Current Wellbore Diagram

Not to scale

FEDERAL WELL: YES NO



Well Name	Campbell #18-13
API	05-077-08993-00
Surface Location	NESW Sec 18 T10S R94W
GPS Coordinates	39.187192, -107.927648
County, State	Mesa County, Co
Diagram Date	2/7/2024

Hole	26" @ 40'
Conductor	16" @ 40'
Cement	Surface

Surface Hole	12.25" @ 1511'
Casing	8 5/8" 32# J-55 @ 1511'
Cement	420 sks
TOC	Surface

Production Hole	7.875" @ 6050'
Casing	4 1/2" 11.6# I-80 @ 6050'
Cement	775 sks
TOC	1150'

Tubing	2 3/8" J-55 EUE @ 5623'
---------------	-------------------------

Perforations	Top	Bottom
	4747'	5925'