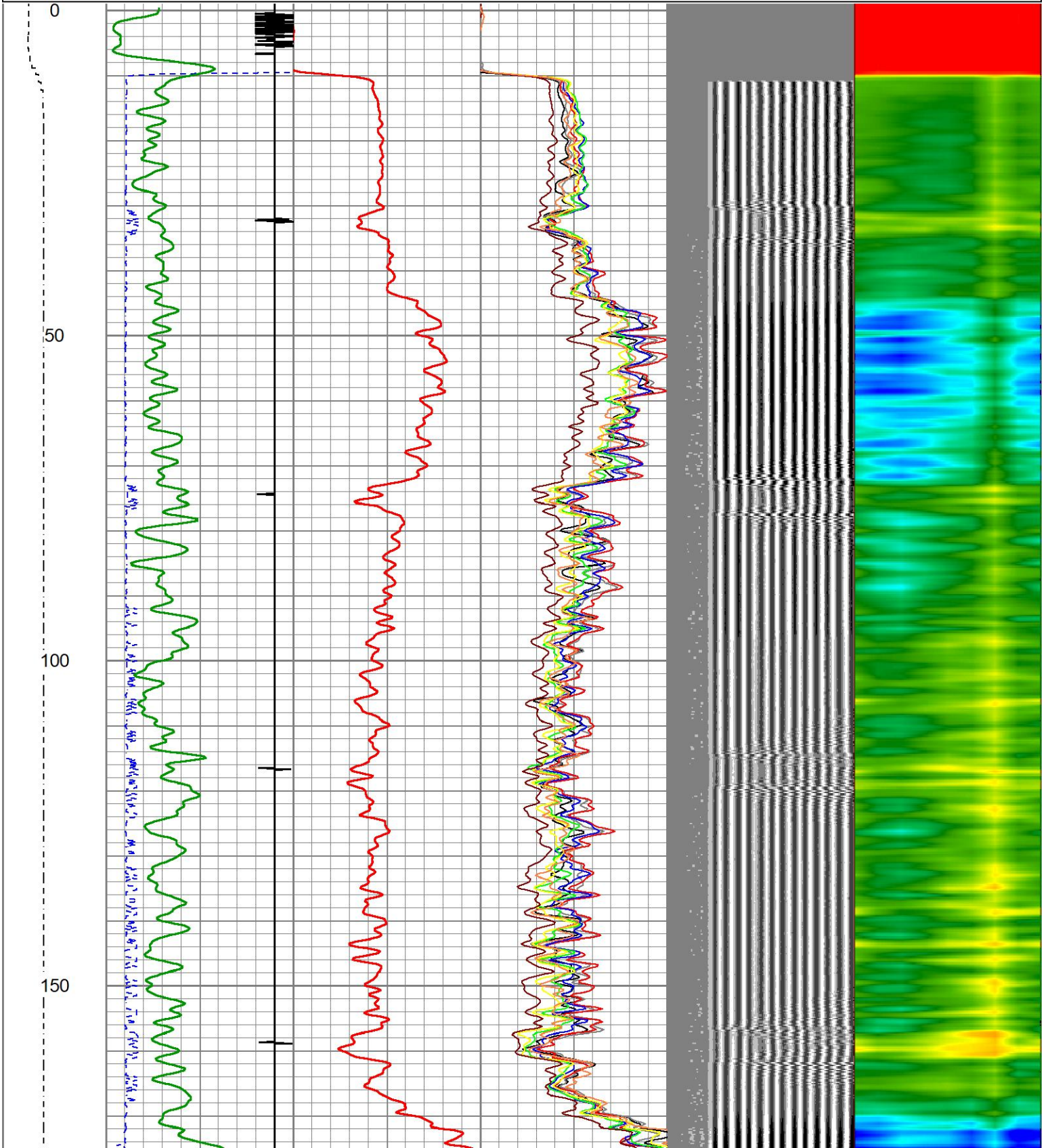
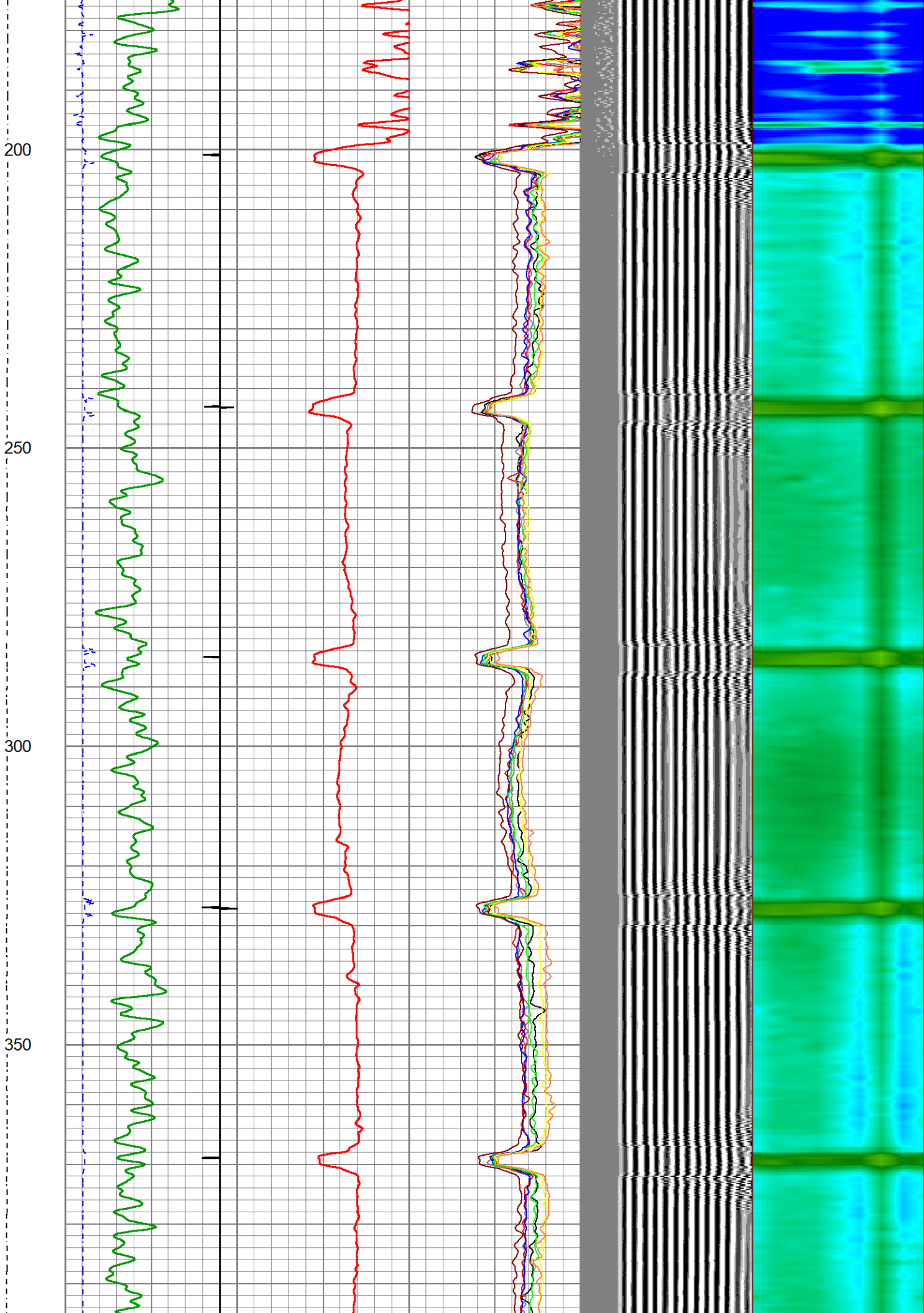


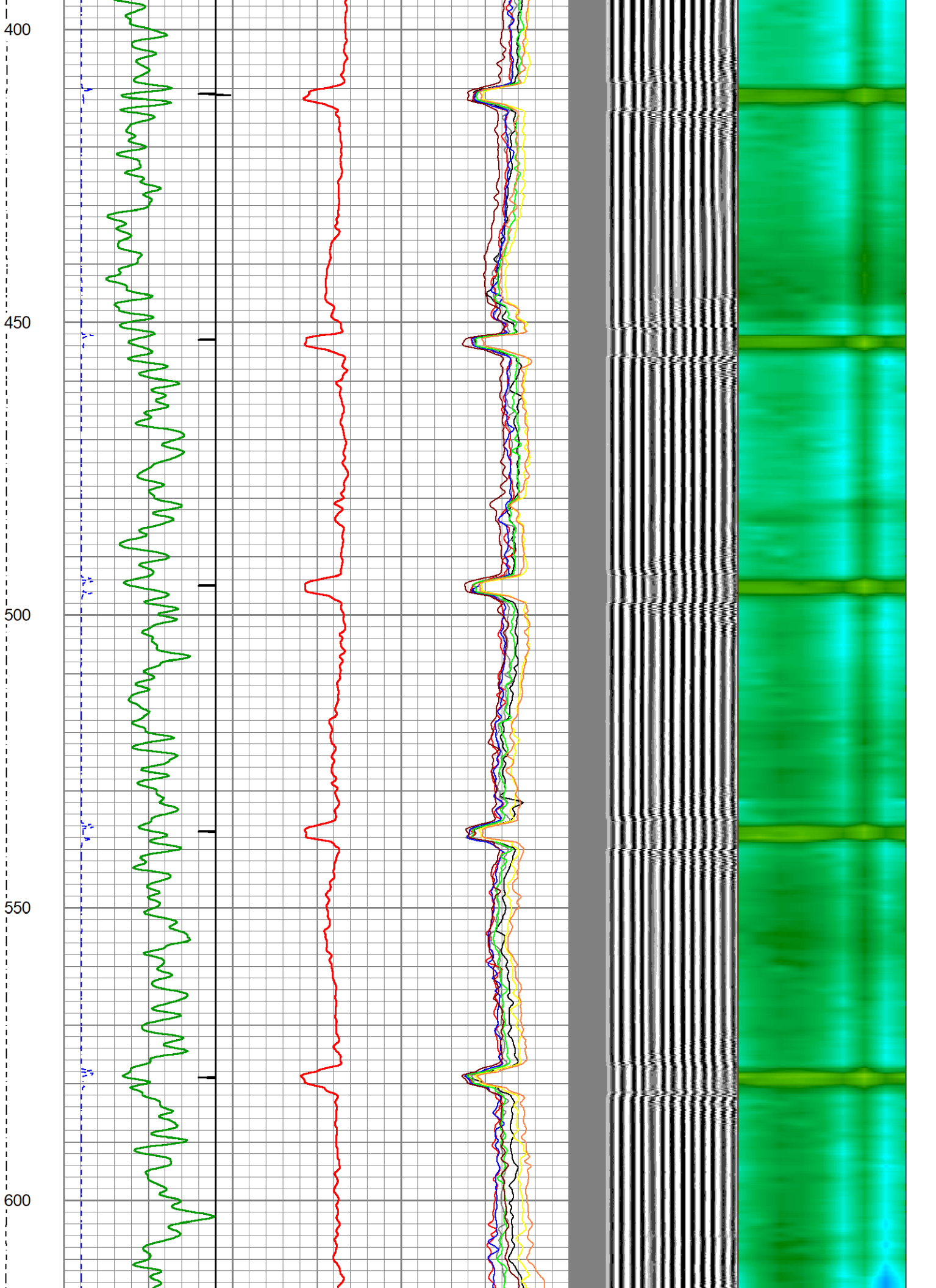
Dataset: state antelope 41-15hz.db: field/well/run1/pass3
 Total length: 20.93 ft
 Total weight: 85.00 lb
 O.D.: 2.75 in

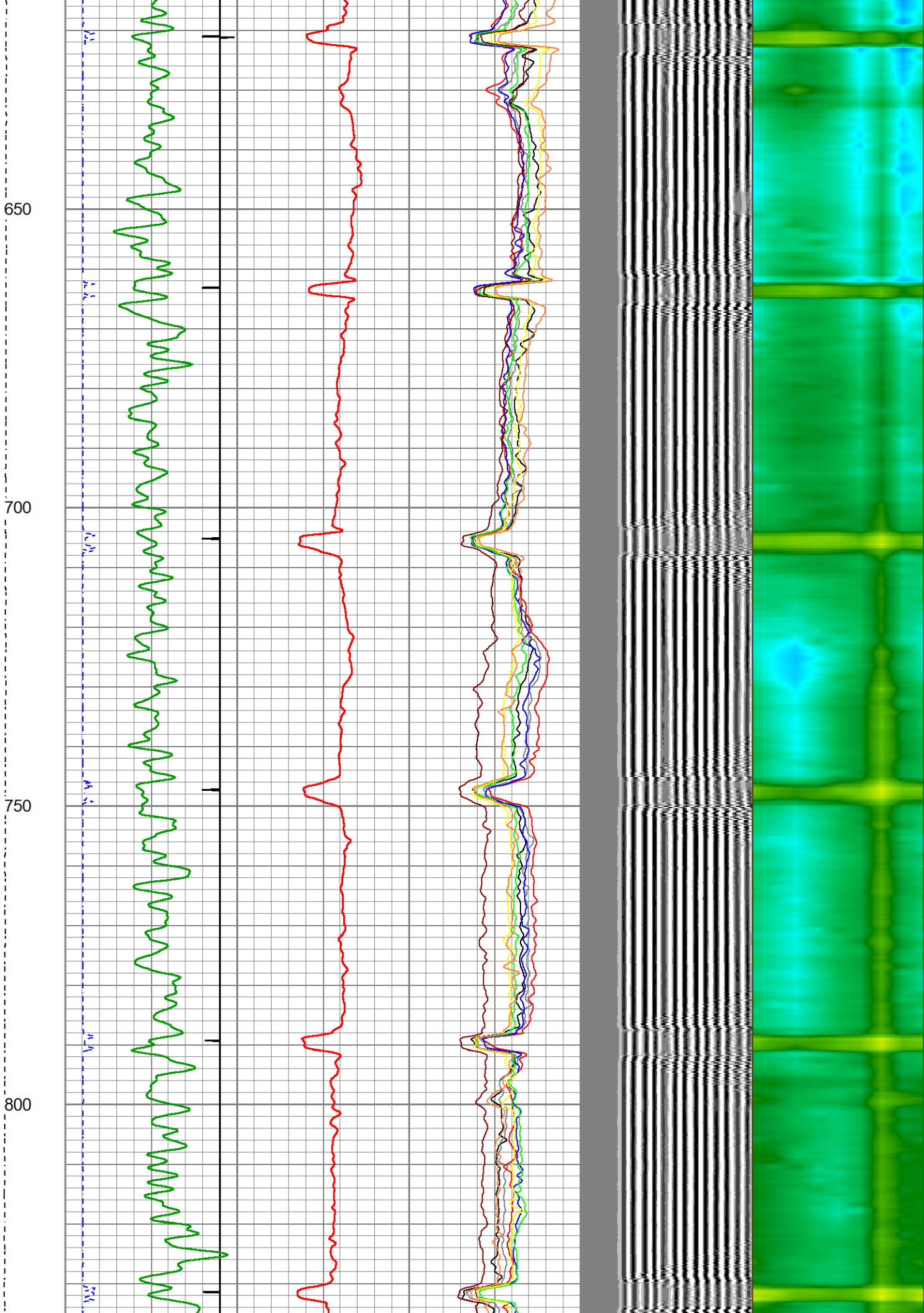
Database File state antelope 41-15hz.db
 Dataset Pathname pass3
 Presentation Format ips_rbtcolorcivitas
 Dataset Creation Wed Mar 06 08:02:39 2024
 Charted by Depth in Foot scaled 1:240

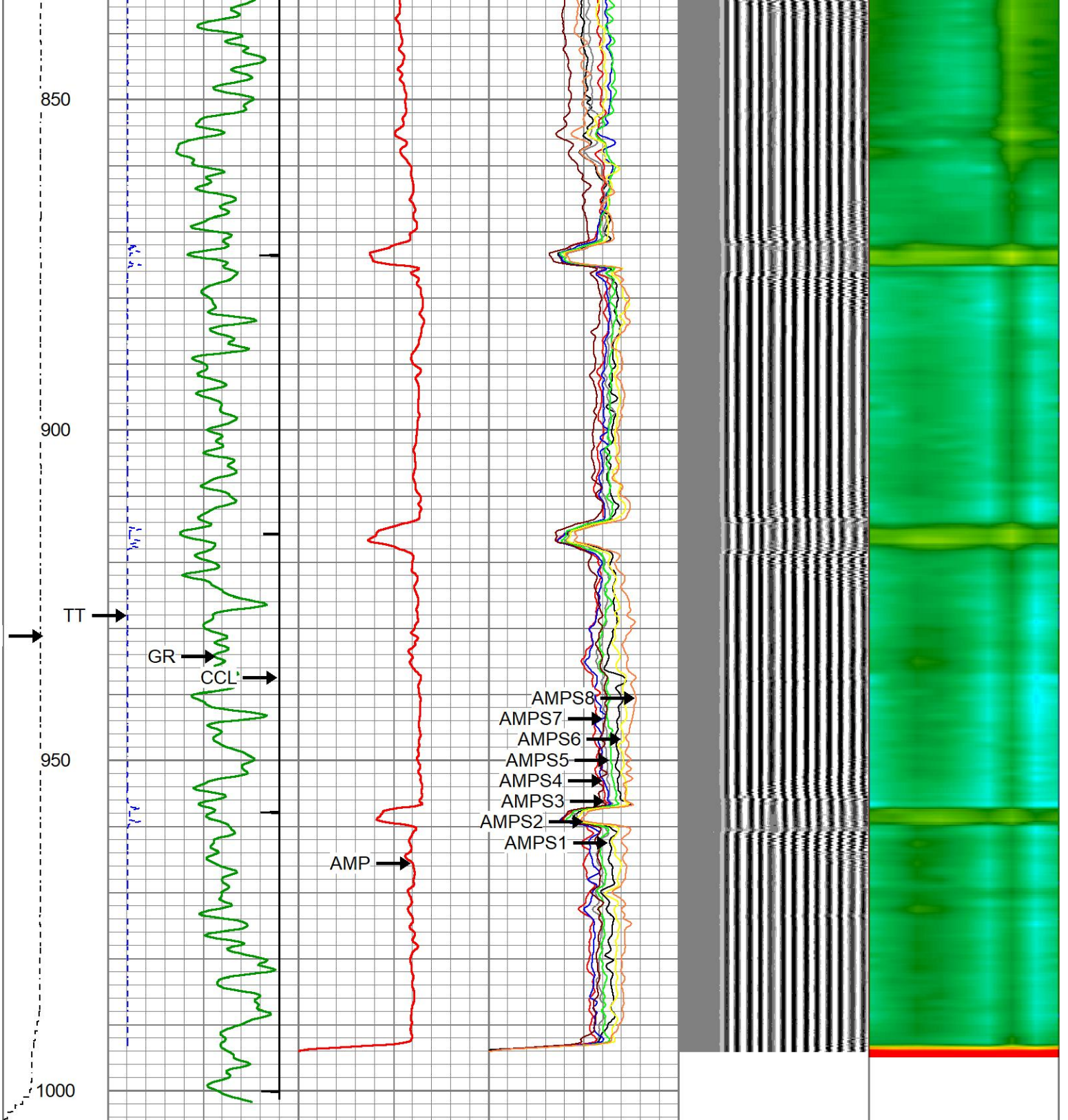
LSPD	200	TT (usec)	1000	0	AMP (mV)	100	0	AMPS1	100	200	VDL (usec)	1200	1	Cement Map	8
(ft/min)	-9	CCL	1				0	AMPS2	100						
0	250	GR (GAPI)	150				0	AMPS3	100						
		GR (GAPI)	400				0	AMPS4	100						
							0	AMPS5	100						
							0	AMPS6	100						
							0	AMPS7	100						
							0	AMPS8	100						











LSPD (ft/min)	200	TT (uSec)	1000	0	AMP (mV)	100	0	AMPS1	100	200	VDL (uSec)	1200	1	Cement Map	8
	-9	CCL	1					AMPS2	100						
	0	GR (GAPI)	150					AMPS3	100						
	150	GR (GAPI)	400					AMPS4	100						
								AMPS5	100						
								AMPS6	100						
								AMPS7	100						
								AMPS8	100						

Database File state antelope 41-15hz.db
 Dataset Pathname pass3
 Dataset Creation Wed Mar 06 08:02:39 2024

Gamma Ray Calibration Report

Serial Number: 27GRL10-XXXX
 Tool Model: 27GRL10
 Performed: (Not Performed)

Calibrator Value: 1.0 GAPI

Background Reading: 0.0 cps
 Calibrator Reading: 1.0 cps

Sensitivity: 1.0000 GAPI/cps

Segmented Cement Bond Log Calibration Report

Serial Number: Greeley Ext Temp
 Tool Model: 27SBT10

Calibration Casing Diameter: 7.000 in
 Calibration Depth: 770.018 ft

Master Calibration, performed Wed Mar 6 08:00:49 2024:

	Raw (v)		Calibrated (mv)		Results	
	Zero	Cal	Zero	Cal	Gain	Offset
3'	0.008	0.171	0.250	62.165	379.761	-2.907
CAL	0.003	0.288				
5'	0.021	0.167	0.250	62.165	422.216	-8.491
SUM						
S1	0.019	0.154	0.000	62.165	458.831	-8.597
S2	0.005	0.152	0.000	62.165	422.234	-2.201
S3	0.006	0.159	0.000	62.165	407.373	-2.412
S4	0.006	0.175	0.000	62.165	366.900	-2.172
S5	0.008	0.183	0.000	62.165	355.452	-2.907
S6	0.007	0.182	0.000	62.165	354.463	-2.419
S7	0.006	0.178	0.000	62.165	360.714	-2.065
S8	0.006	0.159	0.000	62.165	407.210	-2.431

Internal Reference Calibration, performed Thu Jun 23 09:23:51 2022:

	Raw (v)		Calibrated (v)		Results	
	Zero	Cal	Zero	Cal	Gain	Offset
CAL	0.000	0.000	0.003	0.288	1.000	0.000

Air Zero Calibration, performed Wed Mar 6 07:53:11 2024:

	Raw (v)	Calibrated (v)	Results
	Zero	Zero	Offset
3'	0.000	0.000	0.000
5'	0.000	0.000	0.000
SUM			
S1	0.000	0.000	0.000
S2	0.000	0.000	0.000
S3	0.000	0.000	0.000
S4	0.000	0.000	0.000
S5	0.000	0.000	0.000

S5	0.000	0.000	0.000
S6	0.000	0.000	0.000
S7	0.000	0.000	0.000
S8	0.000	0.000	0.000



Company	CIVITAS		
Well	STATE ANTELOPE 41-15HZ		
Field	WATTENBERG		
County	WELD		
State	CO	Country	USA