

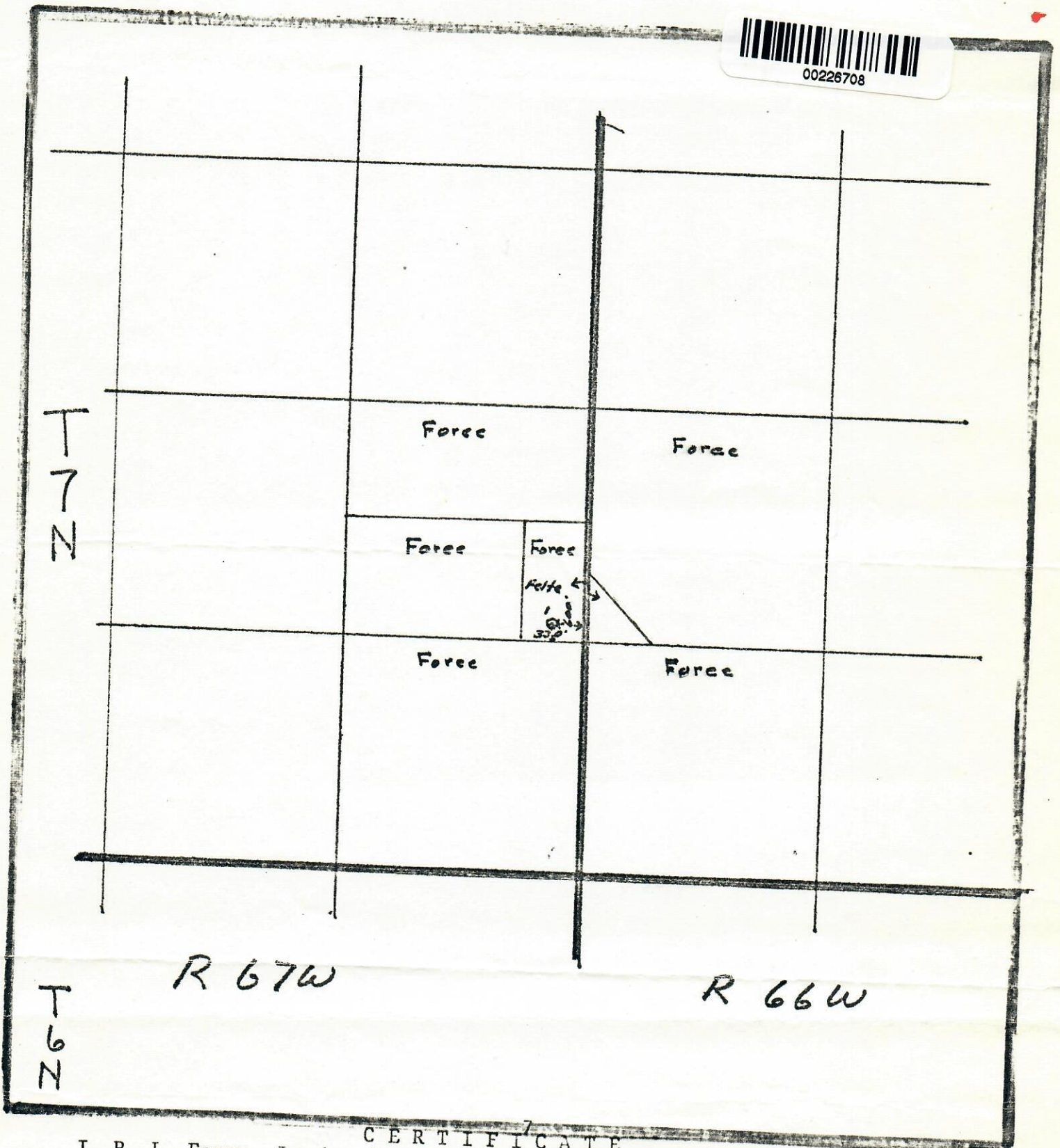
RECEIVED

MAY 24 1971

COLO. OIL & GAS CONS. COMM.



00226708

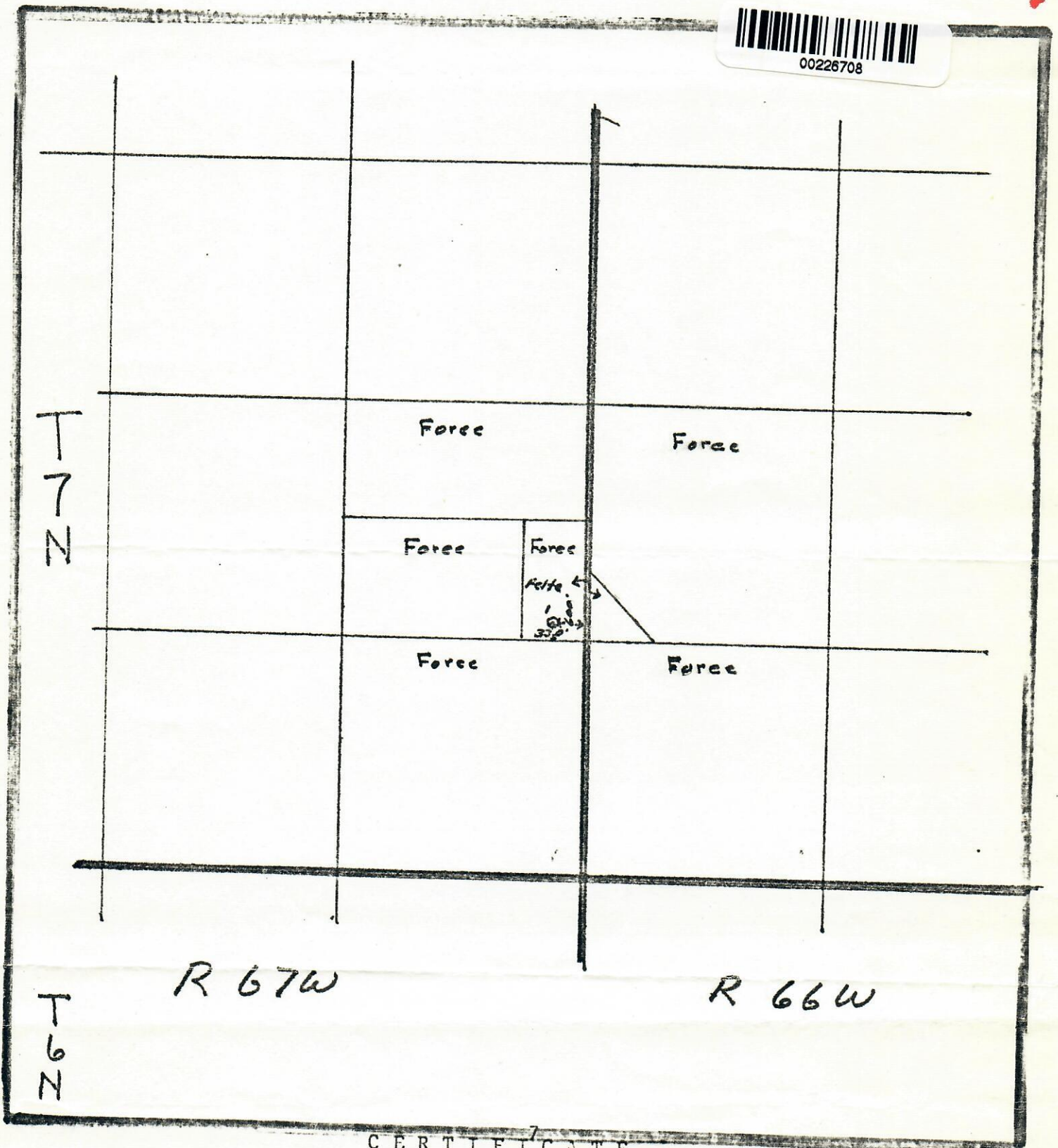


CERTIFICATE

I, R. L. Foree, Jr. hereby certify that the above plat shows the well location of R. L. Foree & Max L. Thomas' Felte No. 1, located 330' from the South line and 600 feet from the East line of Section 25, Township 7 North, Range 67 West, Weld County, Colorado.

R. L. Foree Jr.

RECEIVED
MAY 24 1971
COLO. OIL & GAS CONS. COMM.



CERTIFICATE

I, R. L. Foree, Jr. hereby certify that the above plat shows the well location of R. L. Foree & Max L. Thomas' Felte No. 1, located 330' from the South line and 600 feet from the East line of Section 25, Township 7 North, Range 67 West, Weld County, Colorado.

R. L. Foree Jr.