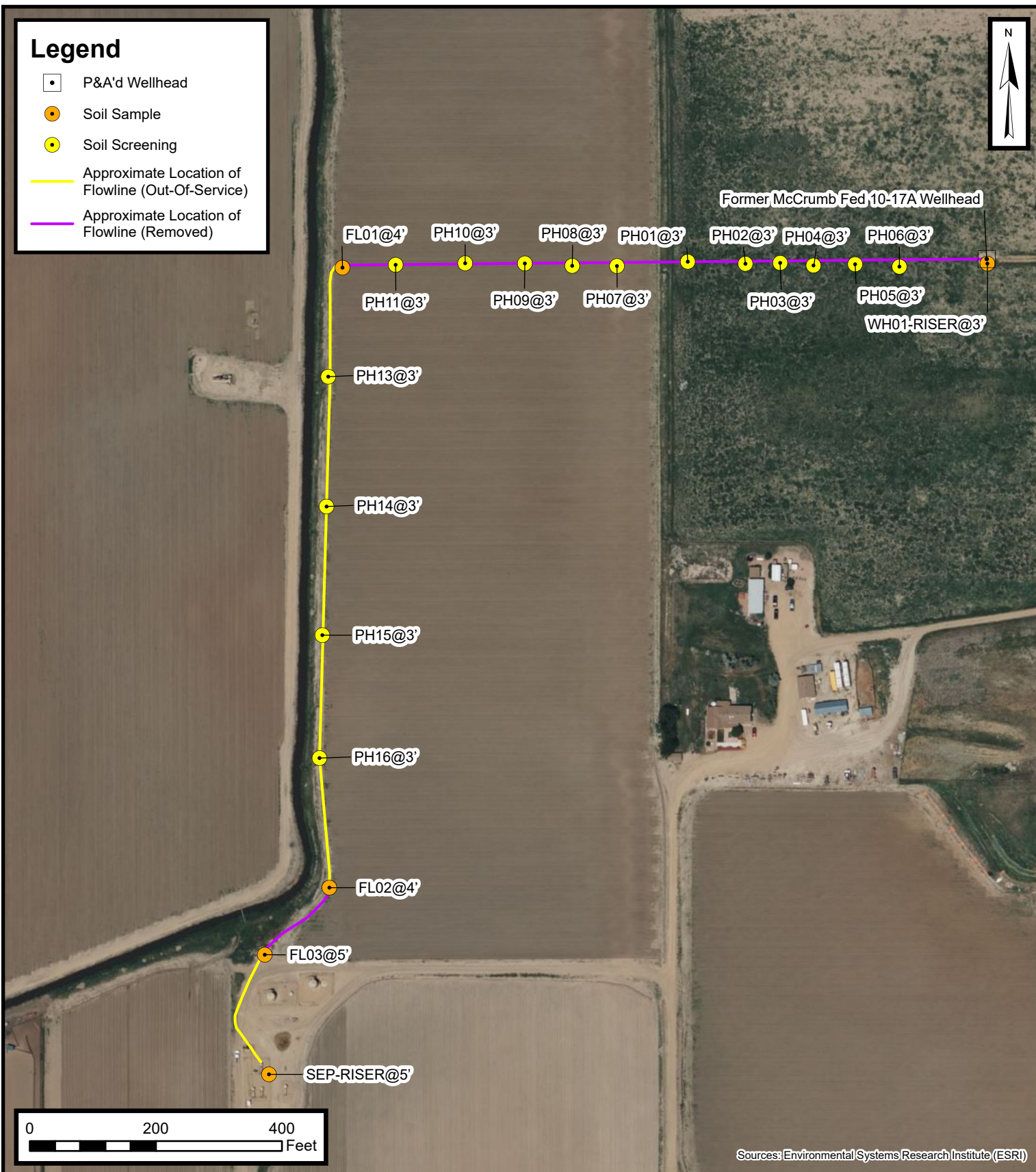


Legend

- P&A'd Wellhead
- Soil Sample
- Soil Screening
- Approximate Location of Flowline (Out-Of-Service)
- Approximate Location of Flowline (Removed)



Flowline Excavation Site Map

McCrumb Fed 10-17A Wellhead
Kerr-McGee Oil & Gas Onshore, LP
NWSE SEC 17-T2N-R66W
Weld County, CO

Project Number: 09A1417654

FIGURE
2