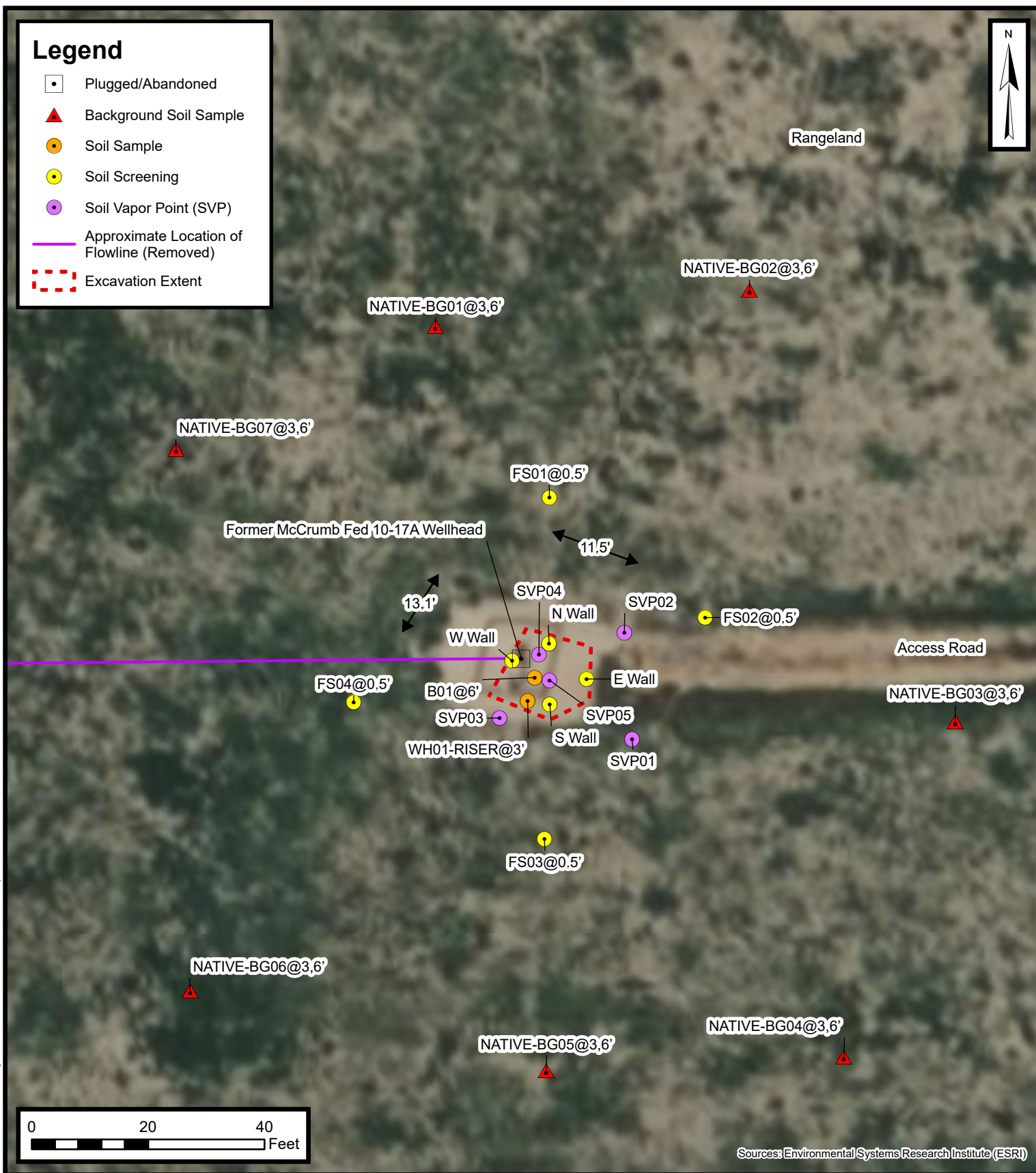


Legend

- Plugged/Abandoned
- Background Soil Sample
- Soil Sample
- Soil Screening
- Soil Vapor Point (SVP)
- Approximate Location of Flowline (Removed)
- Excavation Extent



Default Folder: C:\Users\Mangan\OneDrive - ENSOLUM, LLC\Ensolium GIS0 - Projects\Kerr-McGee Oil & Gas Onshore, LP\09A1417654 - McCrumb Fed 10-17A Wellhead



Wellhead Excavation Site Map

McCrumb Fed 10-17A Wellhead
Kerr-McGee Oil & Gas Onshore, LP
NWSE SEC 17-T2N-R66W
Weld County, CO

Project Number: 09A1417654

FIGURE

1