

PHOTO LOG
SHARKEY 8 & 9-35 & 10-3 O SA FACILITY
WELD COUNTY, COLORADO
KERR-MCGEE OIL & GAS ONSHORE, LP

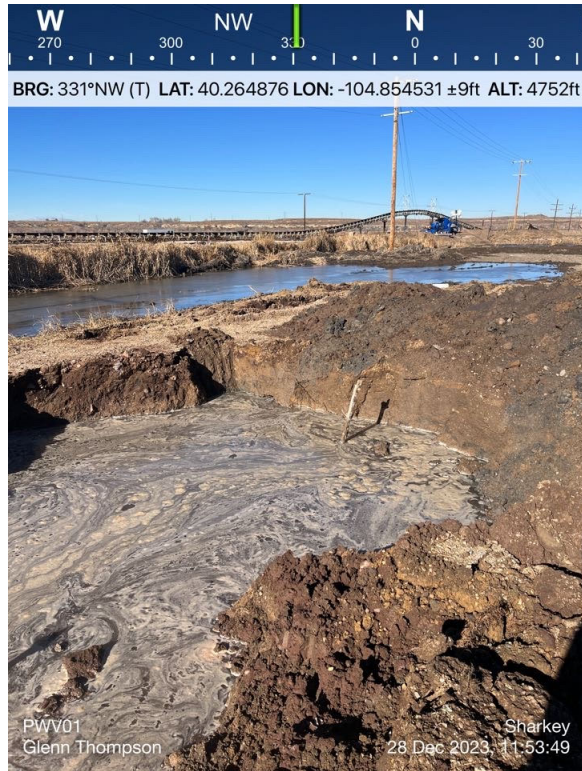


AST 02 Footprint

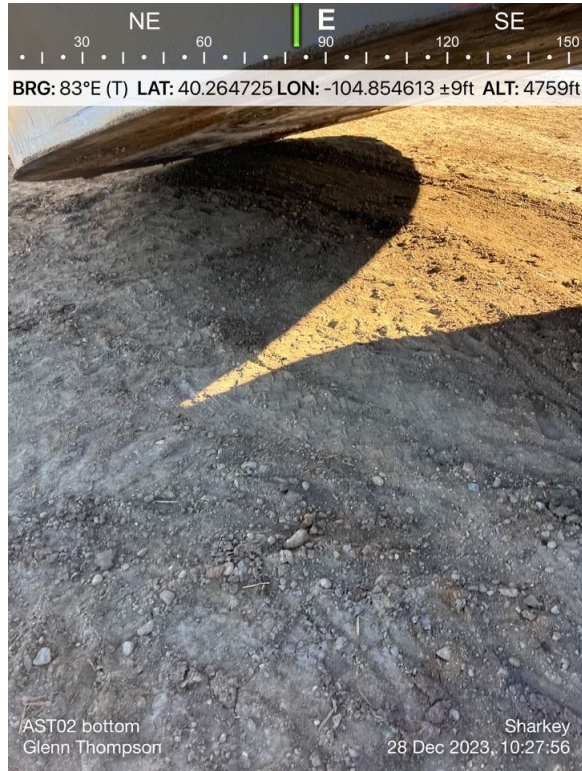


AST 01 Bottom

PHOTO LOG
SHARKEY 8 & 9-35 & 10-3 O SA FACILITY
WELD COUNTY, COLORADO
KERR-MCGEE OIL & GAS ONSHORE, LP



PWV 01 Excavation
(Groundwater Present in Excavation)

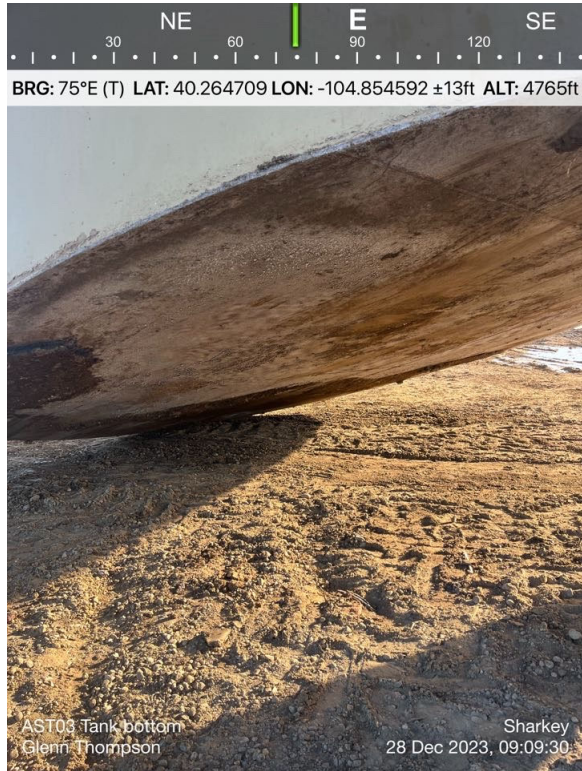


AST02 Bottom

PHOTO LOG
SHARKEY 8 & 9-35 & 10-3 O SA FACILITY
WELD COUNTY, COLORADO
KERR-MCGEE OIL & GAS ONSHORE, LP

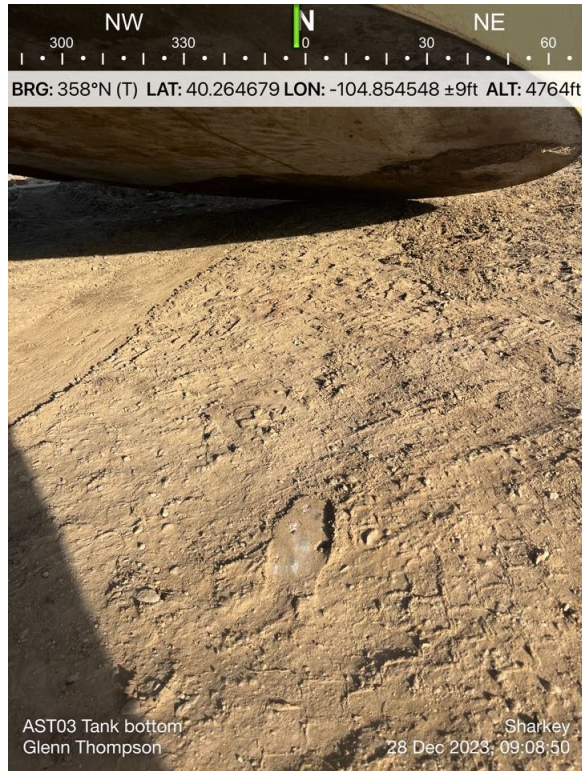


PWV 02 Excavation
(Groundwater Present in Excavation)

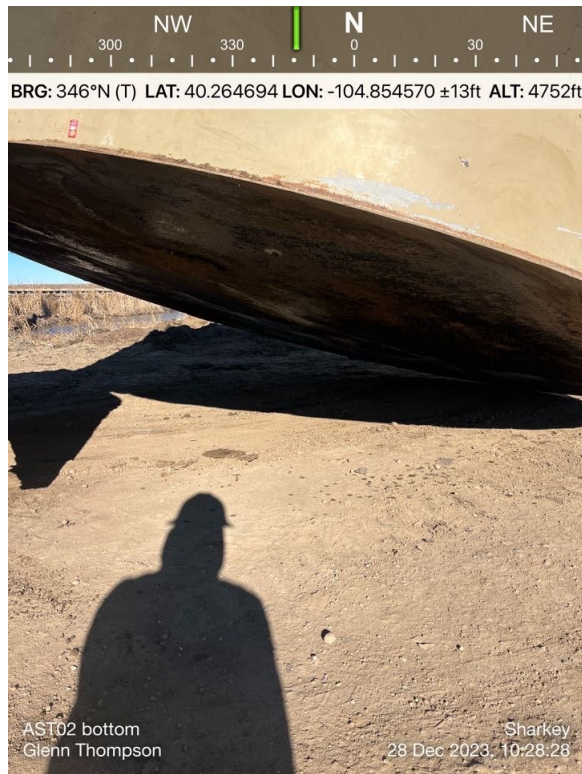


AST 03 Bottom

PHOTO LOG
SHARKEY 8 & 9-35 & 10-3 O SA FACILITY
WELD COUNTY, COLORADO
KERR-MCGEE OIL & GAS ONSHORE, LP



AST 03 Bottom



AST 02 Bottom

PHOTO LOG
SHARKEY 8 & 9-35 & 10-3 O SA FACILITY
WELD COUNTY, COLORADO
KERR-MCGEE OIL & GAS ONSHORE, LP



AST 01 Footprint



AST 01 Bottom

PHOTO LOG
SHARKEY 8 & 9-35 & 10-3 O SA FACILITY
WELD COUNTY, COLORADO
KERR-MCGEE OIL & GAS ONSHORE, LP

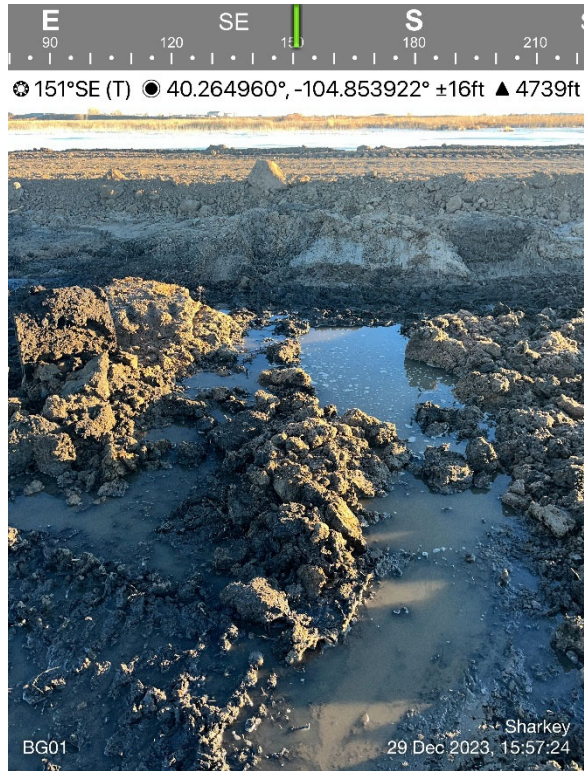


AST 03 Footprint



SEP01-OUTLET

PHOTO LOG
SHARKEY 8 & 9-35 & 10-3 O SA FACILITY
WELD COUNTY, COLORADO
KERR-MCGEE OIL & GAS ONSHORE, LP



BG01



BG02

PHOTO LOG
SHARKEY 8 & 9-35 & 10-3 O SA FACILITY
WELD COUNTY, COLORADO
KERR-MCGEE OIL & GAS ONSHORE, LP



SEP01



Dumplines

PHOTO LOG
SHARKEY 8 & 9-35 & 10-3 O SA FACILITY
WELD COUNTY, COLORADO
KERR-MCGEE OIL & GAS ONSHORE, LP



Meterhouse



ECD

PHOTO LOG
SHARKEY 8 & 9-35 & 10-3 O SA FACILITY
WELD COUNTY, COLORADO
KERR-MCGEE OIL & GAS ONSHORE, LP



AST 03 Footprint

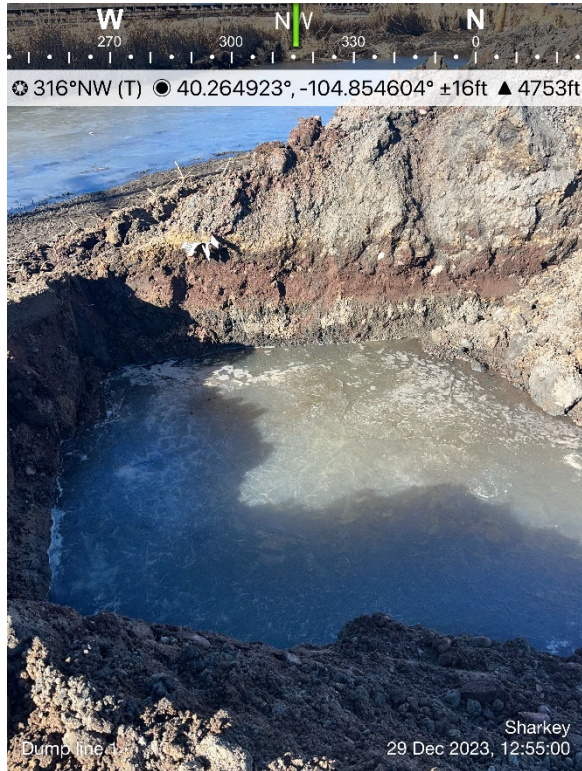


SEP02

PHOTO LOG
SHARKEY 8 & 9-35 & 10-3 O SA FACILITY
WELD COUNTY, COLORADO
KERR-MCGEE OIL & GAS ONSHORE, LP



Sep 02



SEP02

PHOTO LOG
SHARKEY 8 & 9-35 & 10-3 O SA FACILITY
WELD COUNTY, COLORADO
KERR-MCGEE OIL & GAS ONSHORE, LP



ECD



Meter House

PHOTO LOG
SHARKEY 8 & 9-35 & 10-3 O SA FACILITY
WELD COUNTY, COLORADO
KERR-MCGEE OIL & GAS ONSHORE, LP



Dumplines



Sep 01