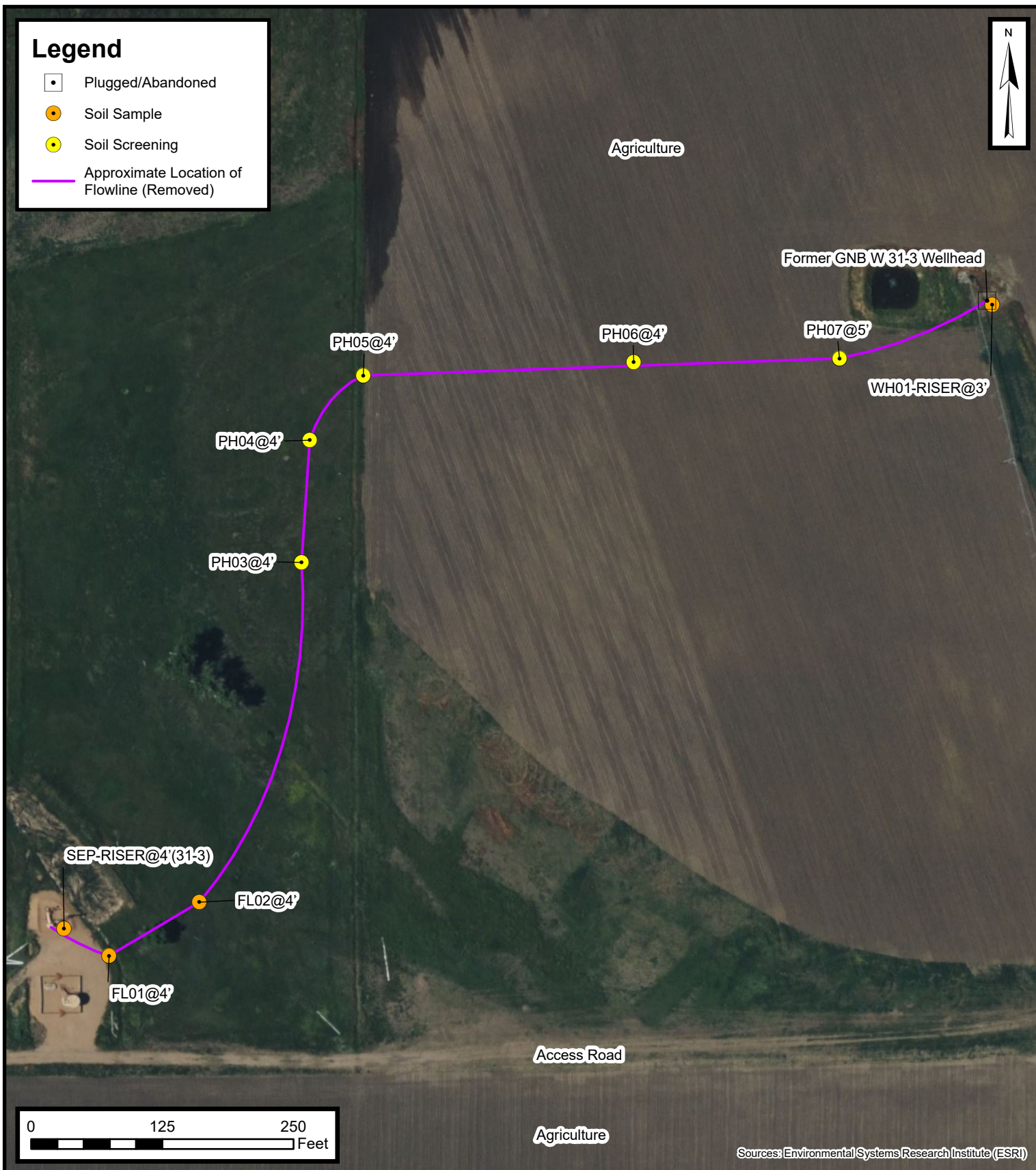


Legend

- Plugged/Abandoned
- Soil Sample
- Soil Screening
- Approximate Location of Flowline (Removed)



Flowline Excavation Site Map

GNB W 31-3 Wellhead
Kerr-McGee Oil & Gas Onshore, LP
NENW SEC 31-T2N-R66W
Weld County, CO

Project Number: 09A1417646

FIGURE

2