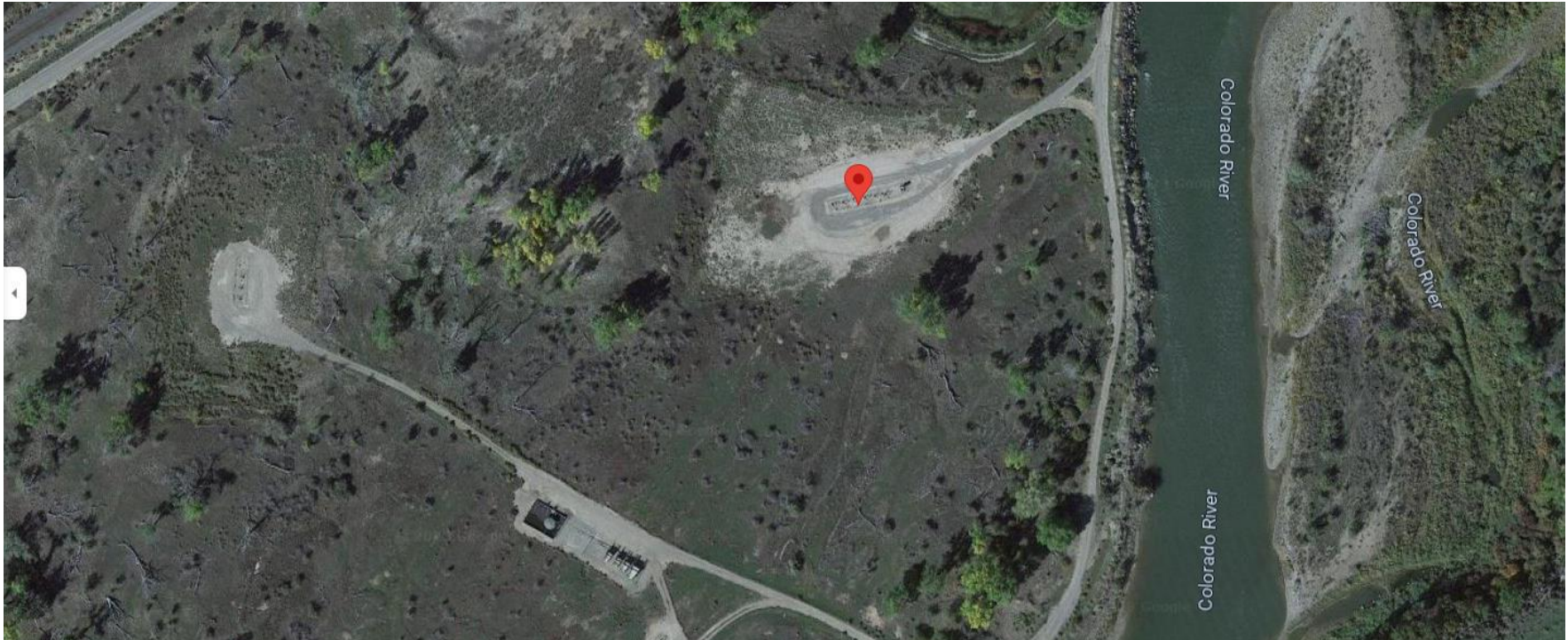


**Storm Water Management and Erosion control**  
**Location Name: TEP Rocky Mountain LLC CLOUGH RMV 150-22 Pad**  
**Location # 335332**



**Location Overview: Location is within High  
Priority/Density/NSO Habitat areas/Bald Eagle Roost site & in  
close proximity to Black Bear Habitat area. Location is  
approximately 97 yards from the Colorado River  
Section/Township/Range: 22 6S94W**