

TABLE 1
SUMMARY OF VOLATILE ORGANIC SOIL CHEMISTRY DATA
NOBLE ENERGY INC.
MILLAGE C-64N64W 12SENW, WELD COUNTY, COLORADO
FREMONT PROJECT NO. C022-149

Sample ID	Sample Date	Depth (ft)	Benzene (mg/kg)	Toluene (mg/kg)	Ethyl-Benzene (mg/kg)	Xylenes (mg/kg)	1,2,4- Trimethyl- Benzene (mg/kg)	1,3,5- Trimethyl- Benzene (mg/kg)	Naphthalene (mg/kg)	TPH GRO (mg/kg)	TPH DRO (mg/kg)	TPH ORO (mg/kg)
COGCC Table 915-1 Limits (Residential SSL)			1.2	490	5.8	58	30	27	2	500		
COGCC Table 915-1 Limits (Protection of Groundwater SSL)			0.0026	0.69	0.78	9.9	0.0081	0.0087	0.0038	500		
WAST01@6.0"	10/20/2022	0.5 Ft	<0.0020	<0.0050	<0.0050	<0.010	<0.0050	<0.0050	<0.0038	<0.50	<50	<50
EAST01@6.0"	10/20/2022	0.5 Ft	<0.0020	<0.0050	<0.0050	<0.010	<0.0050	<0.0050	<0.0038	<0.50	<50	<50
NSEP01@5.0'	10/20/2022	5.0 Ft	<0.0020	<0.0050	<0.0050	<0.010	<0.0050	<0.0050	<0.0038	<0.50	<50	<50
SSEP01@3.0'	10/20/2022	3.0 Ft	<0.0020	<0.0050	<0.0050	<0.010	<0.0050	<0.0050	<0.0038	<0.50	<50	<50
NDL01@5.0'	10/20/2022	5.0 Ft	<0.0020	<0.0050	<0.0050	<0.010	<0.0050	<0.0050	<0.0038	<0.50	<50	<50
PWVB01@6.0'	10/20/2022	6.0 Ft	<0.0020	<0.0050	<0.0050	<0.010	<0.0050	<0.0050	<0.0038	<0.50	<50	<50
PWVB02@6.0'	10/20/2022	6.0 Ft	<0.0020	<0.0050	<0.0050	<0.010	<0.0050	<0.0050	<0.0038	<0.50	<50	<50
PWVN01@5.0'	10/20/2022	5.0 Ft	<0.0020	<0.0050	<0.0050	<0.010	<0.0050	<0.0050	<0.0038	<0.50	<50	<50
PWVN02@5.0'	10/20/2022	5.0 Ft	<0.0020	<0.0050	<0.0050	<0.010	<0.0050	<0.0050	<0.0038	<0.50	<50	<50

Bold faced values exceed the COGCC Table 915-1 concentrations

Red & blue highlighted 915-1 Limits indicate the referenced soil screening level (SSL)

* Summation of GRO+DRO+ORO must be less than 500 mg/kg

TABLE 2
SUMMARY OF POLYCYCLIC AROMATIC HYDROCARBON SOIL CHEMISTRY DATA
NOBLE ENERGY INC.
MILLAGE C-64N64W 12SENW, WELD COUNTY, COLORADO
FREMONT PROJECT NO. C022-149

Sample ID	Sample Date	Depth (ft)	Acenaphthene (mg/kg)	Anthracene (mg/kg)	Benzo (a) Anthracene (mg/kg)	Benzo (a) Pyrene (mg/kg)	Benzo (b) Fluoranthene (mg/kg)	Benzo (k) Fluoranthene (mg/kg)	Chrysene (mg/kg)	Dibenzo (a,h) Anthracene (mg/kg)	Fluoranthene (mg/kg)	Fluorene (mg/kg)	Indeno (1,2,3- cd) Pyrene (mg/kg)	Pyrene (mg/kg)	1-Methyl - Naphthalene (mg/kg)	2-Methyl- Naphthalene (mg/kg)
COGCC Table 915-1 Limits (Residential SSL)			360	1800	1.1	0.11	1.1	11	110	0.11	240	240	1.1	180	18	24
COGCC Table 915-1 Limits (Protection of Groundwater SSL)			0.55	5.8	0.011	0.24	0.3	2.9	9	0.096	8.9	0.54	0.98	1.3	0.006	0.019
WAST01 @ 6.0"	10/20/2022	0.5 Ft	<0.00500	<0.00500	<0.00500	<0.00500	<0.00500	<0.00500	<0.00500	<0.00500	<0.00500	<0.00500	<0.00500	<0.00500	<0.00500	<0.00500
EAST01 @ 6.0"	10/20/2022	0.5 Ft	<0.00500	<0.00500	<0.00500	<0.00500	<0.00500	<0.00500	<0.00500	<0.00500	<0.00500	<0.00500	<0.00500	<0.00500	<0.00500	<0.00500
NSEP01 @ 5.0'	10/20/2022	5.0 Ft	<0.00500	<0.00500	<0.00500	<0.00500	<0.00500	<0.00500	<0.00500	<0.00500	<0.00500	<0.00500	<0.00500	<0.00500	<0.00500	<0.00500
SSEP01 @ 3.0'	10/20/2022	3.0 Ft	<0.00500	<0.00500	<0.00500	<0.00500	<0.00500	<0.00500	<0.00500	<0.00500	<0.00500	<0.00500	<0.00500	<0.00500	<0.00500	<0.00500
NDL01 @ 5.0'	10/20/2022	5.0 Ft	<0.00500	<0.00500	<0.00500	<0.00500	<0.00500	<0.00500	<0.00500	<0.00500	<0.00500	<0.00500	<0.00500	<0.00500	<0.00500	<0.00500
PWVB01 @ 6.0'	10/20/2022	6.0 Ft	<0.00500	<0.00500	<0.00500	<0.00500	<0.00500	<0.00500	<0.00500	<0.00500	<0.00500	<0.00500	<0.00500	<0.00500	<0.00500	<0.00500
PWVB02 @ 6.0'	10/20/2022	6.0 Ft	<0.00500	<0.00500	<0.00500	<0.00500	<0.00500	<0.00500	<0.00500	<0.00500	<0.00500	<0.00500	<0.00500	<0.00500	<0.00500	<0.00500
PWVN01 @ 5.0'	10/20/2022	5.0 Ft	<0.00500	<0.00500	<0.00500	<0.00500	<0.00500	<0.00500	<0.00500	<0.00500	<0.00500	<0.00500	<0.00500	<0.00500	<0.00500	<0.00500
PWVN02 @ 5.0'	10/20/2022	5.0 Ft	<0.00500	<0.00500	<0.00500	<0.00500	<0.00500	<0.00500	<0.00500	<0.00500	<0.00500	<0.00500	<0.00500	<0.00500	<0.00500	<0.00500

Bold faced values exceed the COGCC Table 915-1 concentrations
Red & blue highlighted 915-1 Limits indicate the referenced soil screening level (SSL)

TABLE 3
SUMMARY OF SOIL SUITABILITY FOR RECLAMATION
NOBLE ENERGY INC.
MILLAGE C-64N64W 12SENW, WELD COUNTY, COLORADO
FREMONT PROJECT NO. C022-149

Sample ID	Sample Date	Depth (ft)	EC (mmhos/cm)	pH	SAR	Boron (mg/L)
COGCC Table 915-1 Soil Suitability Limits			<4	6 - 8.3	<6	2
WAST01 @6.0"	10/20/2022	0.5 Ft	0.528	8.57	3.45	0.289
EAST01 @6.0"	10/20/2022	0.5 Ft	0.508	8.27	2.95	0.250
NSEP01 @5.0'	10/20/2022	5.0 Ft	0.410	8.19	0.869	0.0572
SSEP01 @3.0'	10/20/2022	3.0 Ft	0.424	8.47	3.65	0.129
NDL01 @5.0'	10/20/2022	5.0 Ft	0.961	8.35	6.25	0.104
PWVB01 @6.0'	10/20/2022	6.0 Ft	0.303	8.23	0.654	0.145
PWVB02 @6.0'	10/20/2022	6.0 Ft	0.330	8.31	1.29	0.0761
PWVN01 @5.0'	10/20/2022	5.0 Ft	0.490	8.25	2.95	0.160
PWVN02 @5.0'	10/20/2022	5.0 Ft	0.503	8.40	2.85	0.324
BKG01 @6.0"	10/20/2022	0.5 Ft	6.06	7.88	6.84	0.522

Bold faced values exceed the COGCC Table 915-1 concentrations

Yellow highlighted 915-1 Limits indicate the referenced soil screening level (SSL)

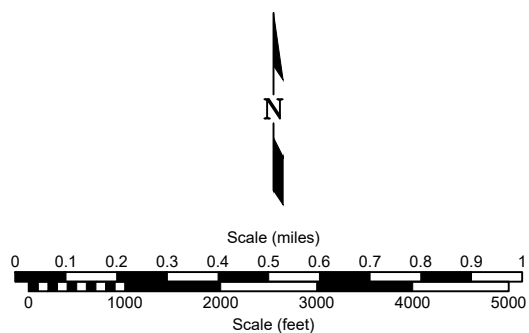
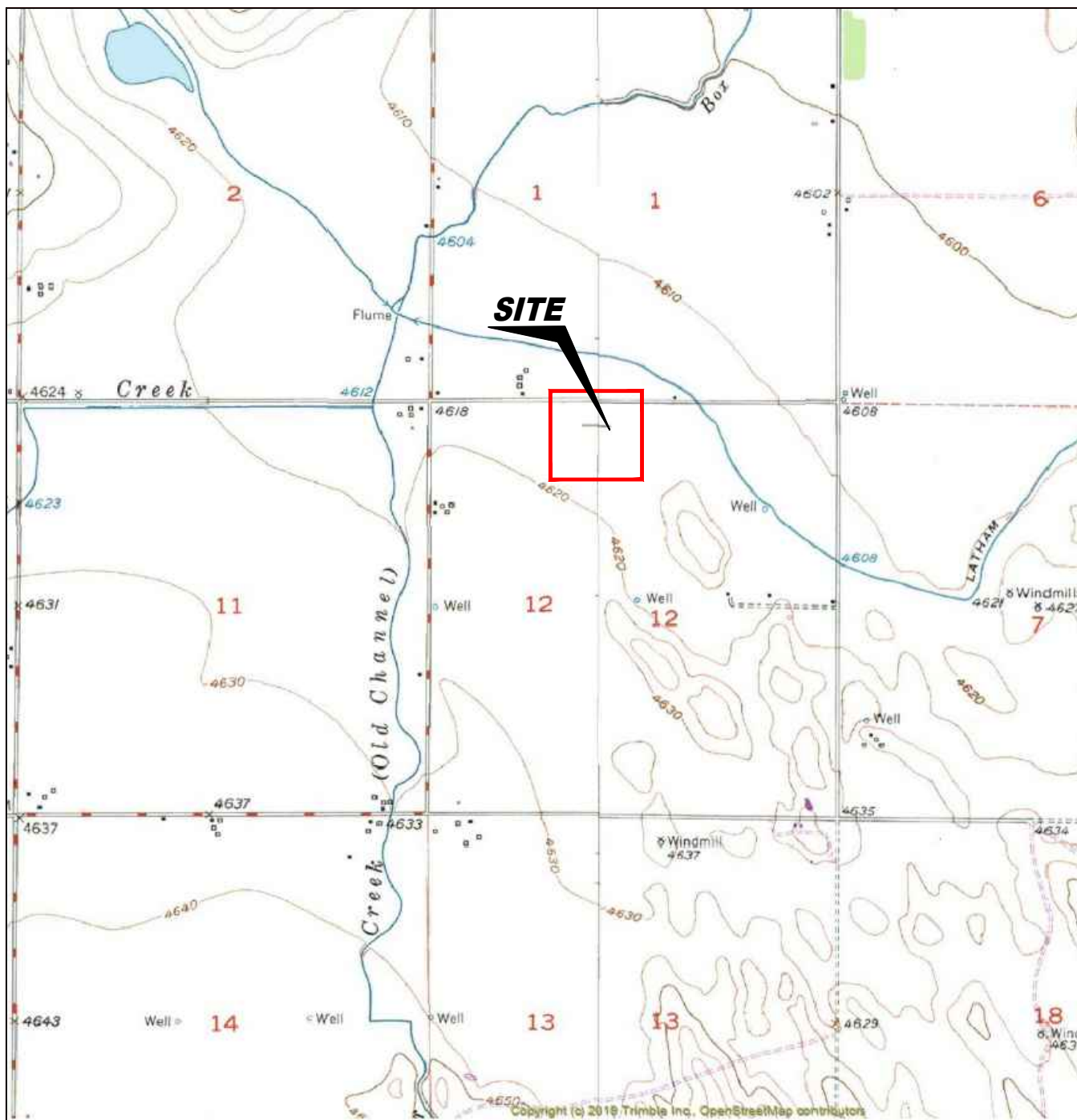
TABLE 4
SUMMARY OF METALS IN SOIL CHEMISTRY DATA
NOBLE ENERGY INC.
MILLAGE C-64N64W 12SENW, WELD COUNTY, COLORADO
FREMONT PROJECT NO. C022-149

Sample ID	Sample Date	Depth (ft)	Arsenic (mg/kg)	Barium (mg/kg)	Cadmium (mg/kg)	Copper (mg/kg)	Lead (mg/kg)	Nickel (mg/kg)	Selenium (mg/kg)	Silver (mg/kg)	Zinc (mg/kg)	Chromium (VI) (mg/kg)
COGCC Table 915-1 Limits (Residential SSL)			0.68	15000	71	3100	400	1500	390	390	23000	0.3
COGCC Table 915-1 Limits (Protection of Groundwater SSL)			0.29	82	0.38	46	14	26	0.26	0.8	370	0.00067
BKG01 @6.0"	10/20/2022	0.5 Ft	1.18	111	0.346	10.0	10.5	7.41	<0.320	0.797	39.4	<0.30

Bold faced values exceed the COGCC Table 915-1 concentrations

Red & blue highlighted 915-1 Limits indicate the referenced soil screening level (SSL)

NA - Not analyzed



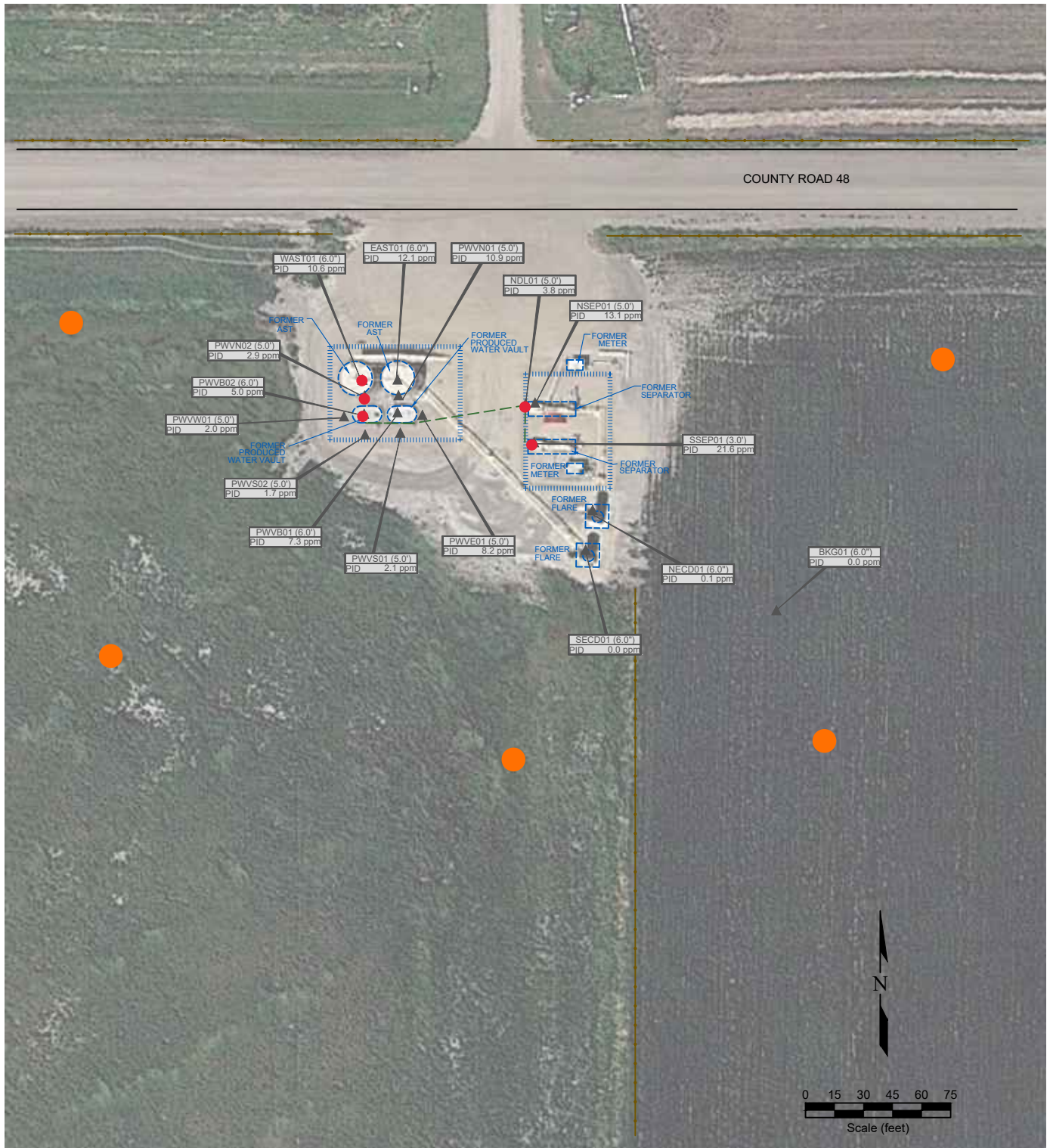
USGS 7.5 MINUTE SERIES (TOPOGRAPHIC)

Figure 1
SITE LOCATION MAP

Noble Energy, Inc. ~ Millage C-64N64W 12SENW
 SENW Sec. 12, T4N, R64W, 6th PM
 Weld County, Colorado
 40.333857°, -104.498861°

Project # C022-149	API # 05-123-25437	Facility # 309832
Date 11/15/22	Remediation # 20432	Filename 22149T





LEGEND

▲ PID READING LOCATION	○ ABOVE GROUND STORAGE TANK	FORMER FACILITY	CONTAINMENT BERM
			DUMP LINE
			FENCE LINE
FORMER FACILITY			
PID READING LOCATION IDENTIFICATION			
PHOTO IONIZATION DETECTION (ppm)			

● Proposed Background Sample Location

● Proposed Re-Sample Location

Figure 2
SITE MAP

Noble Energy, Inc. ~ Millage C-64N64W 12SENW
SENW Sec. 12, T4N, R64W, 6th PM
Weld County, Colorado
40.333857°, -104.498861°

Project No. C022-149	Drawn By	Facility # 309832	
Date 11/15/22	Reviewed By 20432	Filename 22149Q	

