

Well Name & API: **Goetzel 32C-30-M, 05-123-44142**

Flowline Abandonment Type:

Abandon in Place due to common trench with active flowlines.

Flowlines

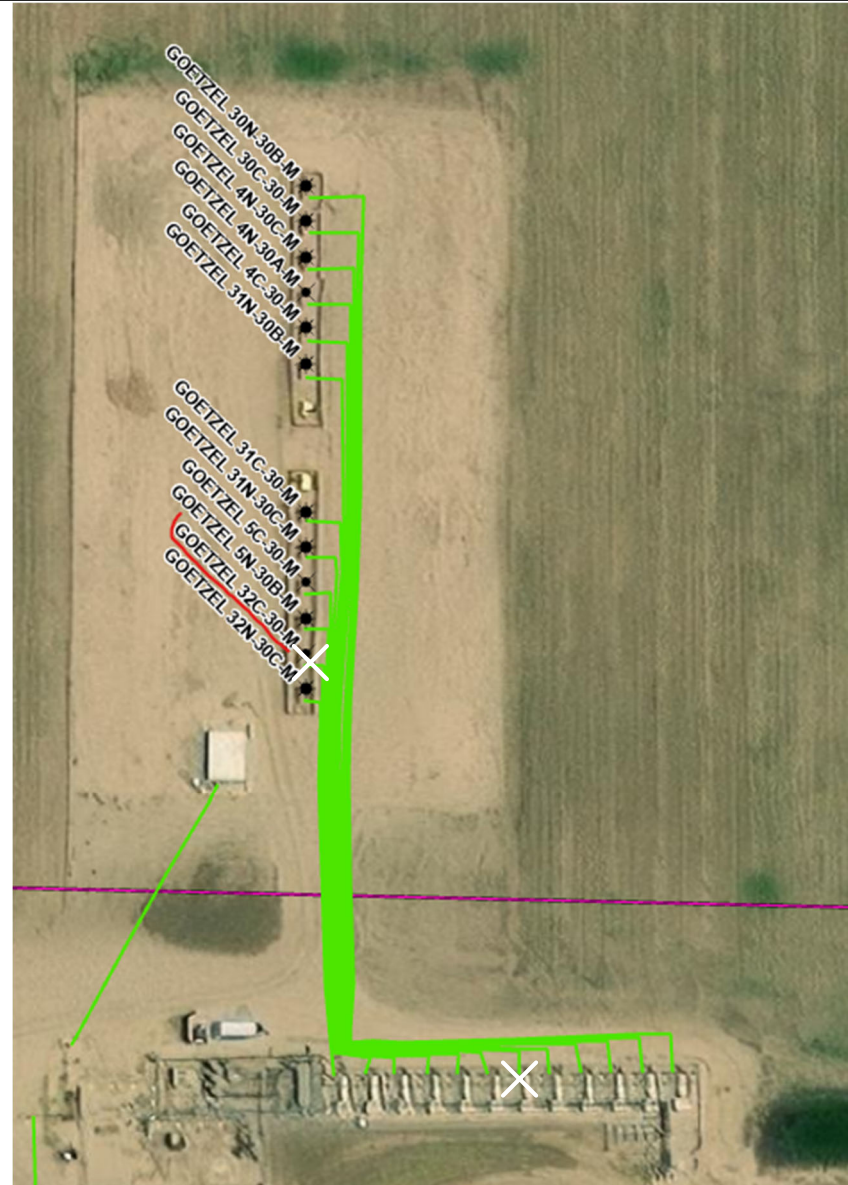
- Abandoned
- Active
- Out of Service
- Pre-commissioned
- Removed
- Turned into Air Line
- Area of Conflict (Proposed Abandon-in-Place Area)
- ✕ Proposed Soil Sample Location
- Field Screening Location

Wells

- Active
- ⊙ Abandoned Location
- Dry & Abandoned
- ⊛ Plugged & Abandoned
- ⊛ Producing
- ⊛ Shut-In
- ⊙ Temporarily Abandoned

Third-Party Pipelines

- — —
- — —
- — —
- — —
- — —
- — —
- — —
- NWI Wetlands



Well Latitude/Longitude: 40.460623/-104.801189
 Flowline Length (ft): 247

Flowline Point A Latitude/Longitude: 40.46060478/-104.8011868
 Flowline Point B Latitude/Longitude: 40.45998626/-104.80109724

Created By: Clara Jenck
 Date: 04/23/2024

