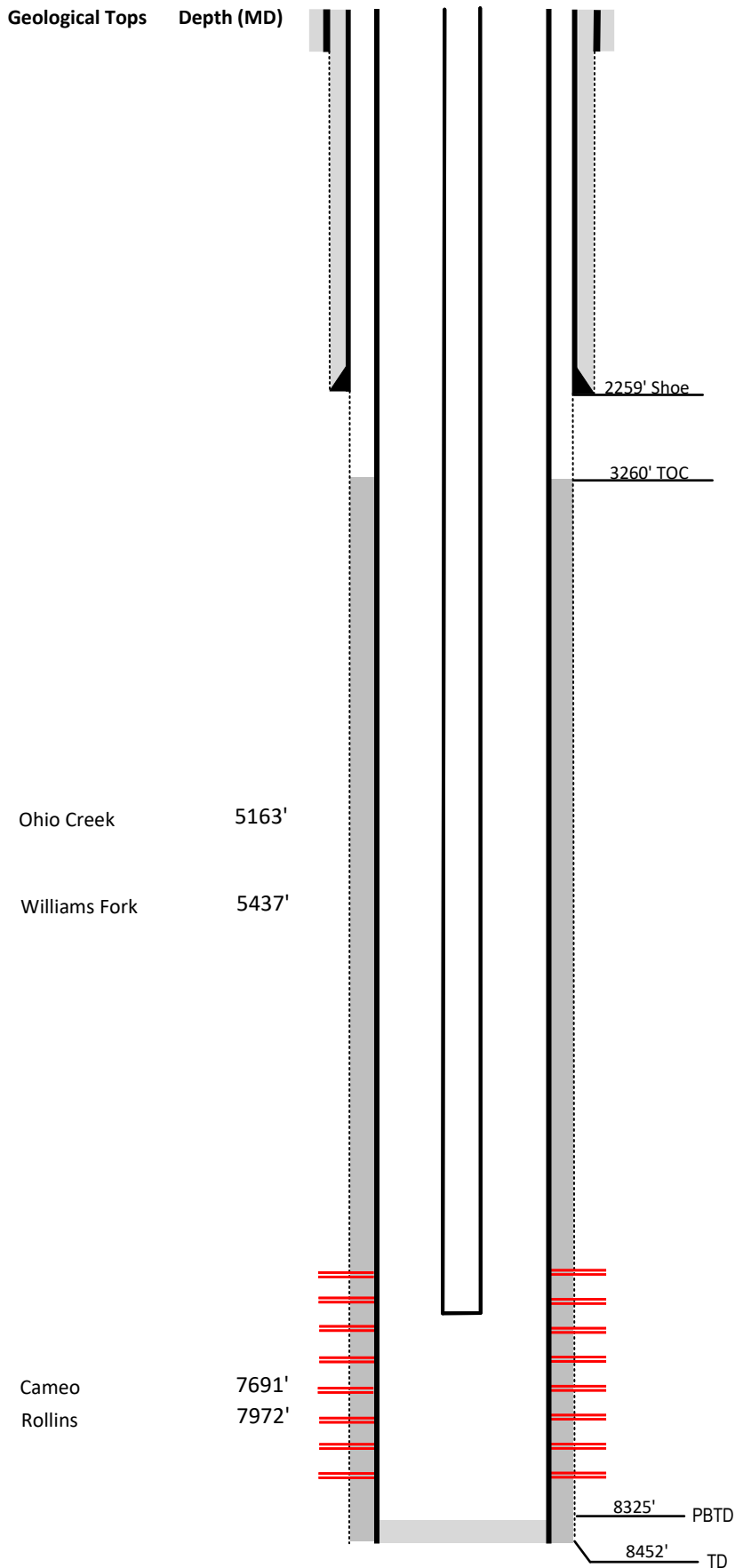


Laramie Energy

Current Wellbore Diagram

FEDERAL WELL: YES NO

Not to scale



Well Name NVega # 23-431
 API 05-077-09504-00
 Surface Location NWSW Sec 24 T9S R93W
 GPS Coordinates 39.257667, -107.728958
 County, State Mesa County, Co
 Diagram Date 4/24/2024

Hole	24" @ 40'
Conductor	16" @ 40'
Cement	Surface

Surface Hole	12.25" @ 2259'
Casing	8 5/8" 32# J-55 @ 2259'
Cement	810 sks
TOC	Surface

Production Hole	7.875" @ 8385'
Casing	4 1/2" 11.6# I-80 @ 8385'
Cement	907 sks
TOC	3260'

Tubing	2 3/8" I-80 EUE @ 7051'
---------------	-------------------------

Perforations	Top	Bottom
	6233'	8149'