

# EMERGENCY RESPONSE PLAN



Headquarters  
31375 Great Western Dr.  
Windsor, CO 80631

Front Range 2  
SW¼ SE¼, Section 23, T6N, R67W, 6<sup>th</sup>  
P.M. Lat: 40.466418°, Long: -104.859778°  
Windsor, CO  
Weld County

1. Site specific information
  - a. Site Safety Requirements
  - b. Emergency muster/assembly point(s)
  - c. 911 Address and GPS coordinates
  - d. Site description
  - e. Nearby schools and other areas of interest
  - f. Directions to project locations
  - g. Location of SDS sheets
  - h. Location of sign-in sheets, JSA, safety forms
2. Maps & Documents
  - a. Site Map
    - i. 2,000' Buffer and location of nearest Building Unit
    - ii. Access Map and Muster point
    - iii. 2,500' Buffer zone
3. List of Emergency Contacts
  - a. Carbon Storage Solutions contact information
  - b. First responder contacts information
  - c. Regulatory contact information
  - d. Nearest hospital
4. Spill Response
  - a. Spill Response
5. Evacuation Information
  - a. Evacuation plan procedures (public)
6. Coordination with First Responder Agencies
7. Appendix 1A. Tactical Response Card

**Section 1**  
**Site Specific Information**

1. Site Safety Requirements and General Information

The minimum personal protective equipment (PPE) to enter any Carbon Storage Solutions Location includes a hard hat, safety glasses, safety glasses, safety glasses, safety glasses, safety toe boots, and fire-resistant clothing (FRC). All contractors and visitors are responsible for providing their employees with the appropriate training on and use PPE while on Carbon Storage Solutions locations. In addition, all contract personnel entering a Carbon Storage Solutions location to perform work must understand and abide by Carbon Storage Solutions contractor expectations relating to environmental, health, and safety requirements.

The primary hazards that any person must be aware of while on a Carbon Storage Solutions location include, but are not limited to, the potential for release of hydrocarbon gases and/or liquids from drilling equipment/tanks, heavy truck and equipment traffic, loud noise, high pressures, and the potential for a flash fire. These hazards can vary depending on the work being performed.

2. Emergency Muster / Assembly point(s)

- a. Carbon Storage Solutions – Front Range 2

3. 911 address and GPS coordinates

- a. Lat/Long:..... 40.466418° /104.859778°
- b. Legal Description:.....SWSE 23 6N 67W
- c. Address: .....No address (see Lat/Long)
- d. Town, State, ZIP: ..... Weld County, Colorado, 80631

4. Site Description

- a. The proposed pad is a Carbon Storage Solutions location that will have one vertical well drilled and cased. No oil and gas production will occur on this proposed pad. No production equipment will be constructed on this proposed pad.

5. Nearby schools and other areas of interest

- a. The closest school is Little Angel Christian Preschool Academy (Windsor, CO) is located 1.17 miles (6,196 ft) from the proposed Location. The closest residential building unit is 1,613 feet from the location. No other areas of interest are near the pad site.

6. Directions to Project Locations

- a. From State Highway 392/WCR 68..... 1.7 mi.
- b. Great Western Dr (Paved Road) ..... 1.0 mi.
- c. WCR 66 (Paved Road) ..... 200 ft.
- d. Lease Road ..... 524 ft.
- e. New Access Road ..... 146 ft.

This location will be on the north side of Eastman Park Drive, approximately 0.25 miles west of the intersection of Great Western Dr. and Eastman Park Dr.

7. Location of SDS sheets, Sign-in Sheets, JSAs, and Safety Forms

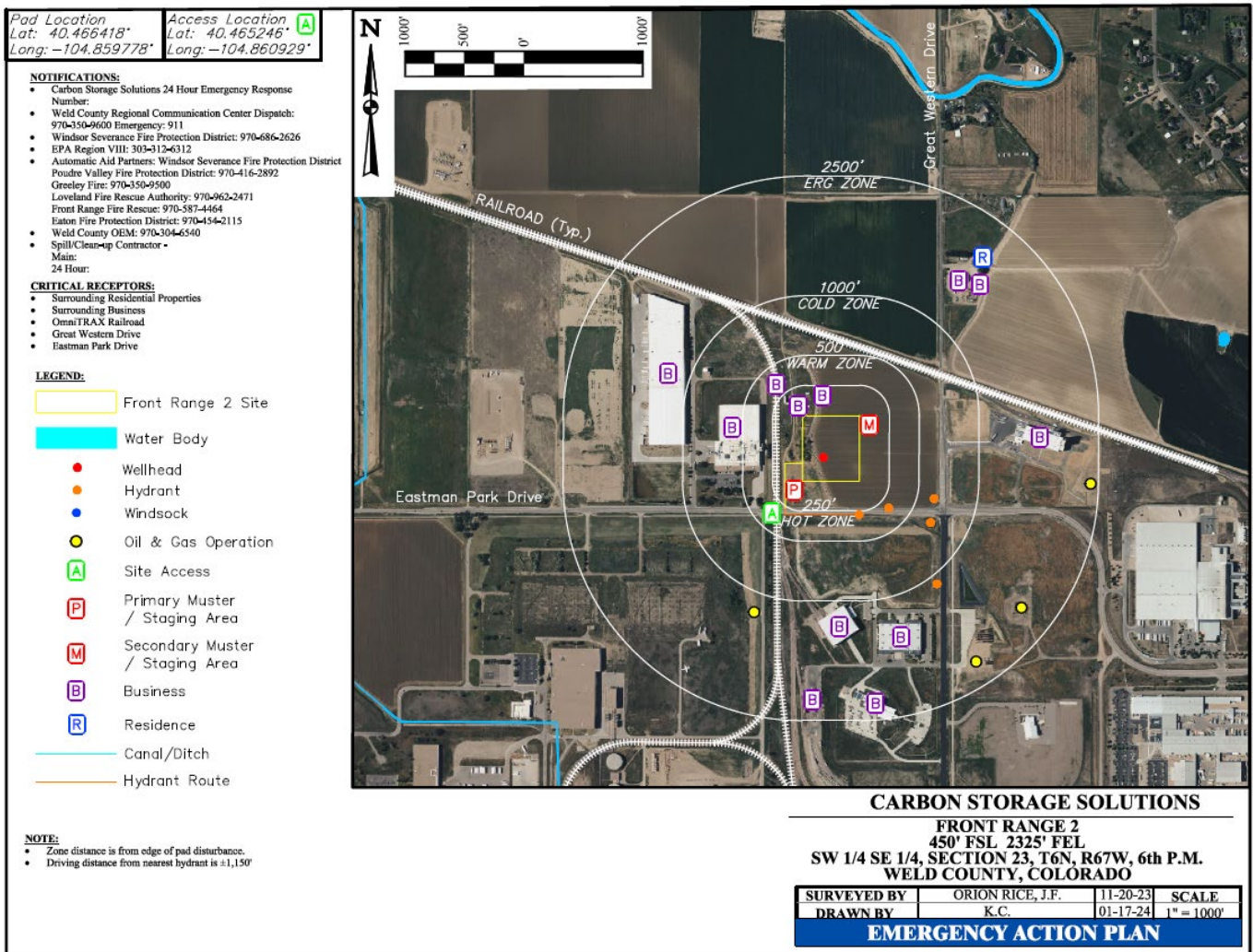
- a. Depending on the operations taking place on location, the chemicals that may be present will vary. Regardless, hazard communication is a critical safety measure and Safety Data Sheets (SDS's) will be available from the Carbon Storage Solutions representative present or the contractor performing work on location.

During drilling and completion activities all employees and approved visitors to the pad will be required to enter through a security checkpoint at the location entrance where they will be required to sign in and provided with a detailed safety briefing of current operations and all safety precautions that must be adhered to while on location. In addition, all who enter the location must also sign out upon their departure. Security personnel are required to account for all persons entering or leaving location during active operations and in the event of an incident.

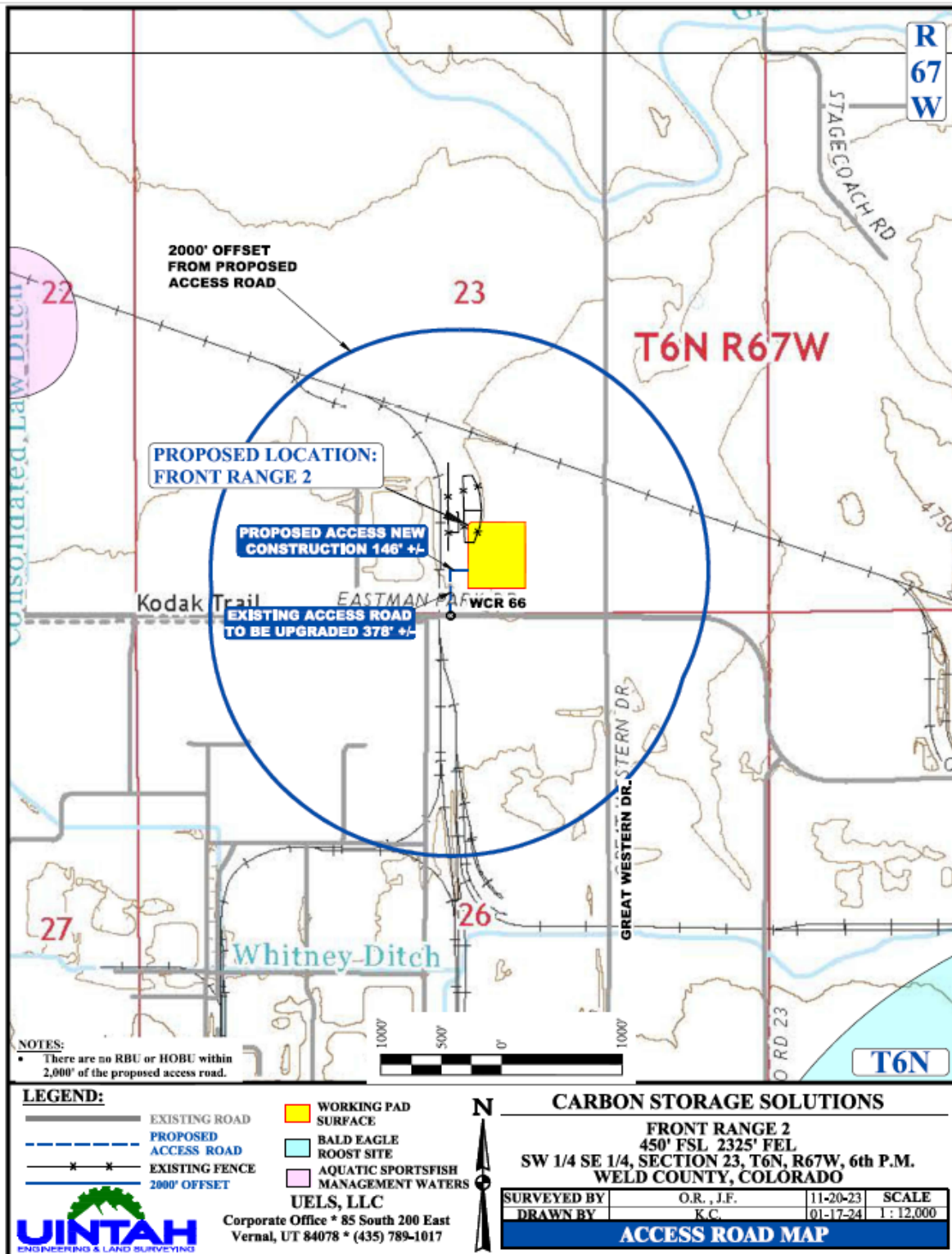
Once drilling and casing activities are finalized, no unauthorized personnel will be allowed on location without first contacting a Carbon Storage Solutions representative.

## Section 2

### Project Area Maps: 2,000 Foot Buffer

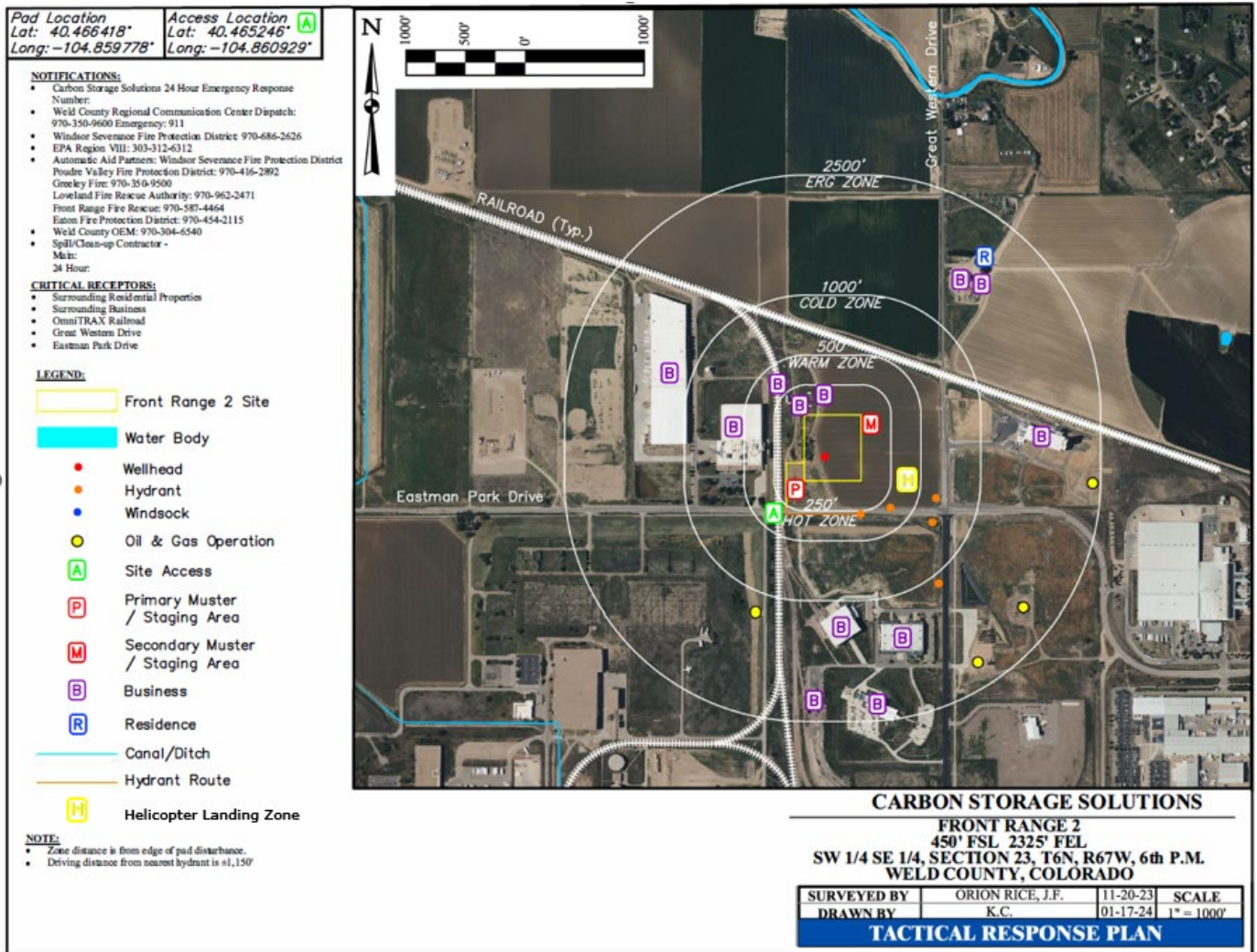


# Project Location Access Map





## Project Muster Area and Helicopter Landing Zone



### **Section 3**

#### **List of Emergency Contacts**

##### **1. Carbon Storage Solutions**

Name	Number
Corporate Office	970-674-2910
Dan Sanders, CEO	970-590-7263

##### **2. First Responder Contact Information**

Name	Emergency	Number
Windsor Police Department	911	970-674-6400
Windsor Fire Protection (Station 1)	911	970-686-2626
Weld County Sheriff	911	970-356-4015
Weld County Office of Emergency Management		970-304-6540
Colorado State Highway Patrol	911	970-506-4999

##### **3. Regulatory Contacts**

Name	Number
ECMC	303-894-2100
CDPHE	877-518-5608
Colorado Division of Parks & Wildlife	303-291-7227
National Response Center	800-424-8802

##### **4. Medical Facilities**

Name	Number
UCHealth - Greeley Hospital	970-652-2000
UCHealth Emergency Room – West Greeley	970-652-2160

##### **5. Spill Response Organizations**

Name	Phone
ECMC	303-894-2100
CDPHE	877-518-5608
Weld County	970-400-3579
Power Services Co.	970-356-4148



6. Fire, explosion, associated with loss of well control

Name	Number
Platte Valley Fire Protection (Kersey)	911
UCHealth Emergency Room – West Greeley	970-392-4320
Weld County Office of Emergency Management (Roy Rudisill)	970-350-9600

7. Government Agencies

Name	Number
Kersey Police Department	911 or 970-353-1681
Weld County Sheriff's Office	911 or 970-356-4015
ECMC	303-894-2100
CDPHE	877-518-5608
City of Kersey (Kurt Smith)	970-353-1681
Weld County (Jason Maxey, LGD)	970-400-3579

8. Railroad Emergency Response

Name	Office Phone
Great Western Railway of Colorado	970-372-4310

## **Section 4**

### **Spill Response and Clean Up**

#### **1. Spill Response**

There are multiple types of hydrocarbons which can be spilled during drilling and casing operations. Most commonly spilled are drilling fluids made up of water, diesel and synthetics. Refined petroleum products such as diesel, gasoline, and motor oil spills are less common, but still equally important to mitigate. If a spill is found reportable, it will be mitigated in accordance with ECMC and CDPHE guidelines.

Once a release has been identified, it will be immediately stopped and contained if possible and is safe to do so. When containing a spill; pig blankets, snakes, absorbent materials, or earthen berms will be constructed around the release to keep material from spreading. These materials will be provided by Carbon Storage Solutions and the contract company and kept on-site. Diligent efforts will be made to minimize contact with live vegetation or open water if release is outside of secondary containment structures.

In the event of a large incident requiring outside assistance, Carbon Storage Solutions has contracted with Power Services Company. Quandary possesses a working knowledge of oil and gas operations, emergency response and Incident Command.

These regulatory guidelines will be strictly followed by Carbon Storage Solutions and any contractors operating under Carbon Storage Solutions guidance during all activities on this proposed well pad.

**Section 5**  
**Evacuation Information**

1. **Evacuation Plan Procedures (public)**

The procedure to be used in alerting nearby person(s) in the event of any occurrence that could pose a threat to life or property will be arranged and completed with public officials in detail.

In the event of an actual emergency, the following steps will be immediately taken:

- a. The Carbon Storage Solutions representative will immediately notify proper authorities, including the sheriff's office, highway patrol, and any other public officials as described above and will enlist their assistance in warning residents and transients in the calculated radius of exposure.
- b. Carbon Storage Solutions will coordinate with local authorities to warn residents' down-wind of the location and within radius of exposure from the well site. Additional evacuation zones may be necessary as the situation warrants.
- c. The Carbon Storage Solutions representative will coordinate with appropriate emergency personnel to divert traffic in the vicinity away from the potentially dangerous area. No trespassing and warning signs will be posted at the entrance to the well site.
- d. General:
  - i. The area included within the radius of exposure is the zone with the maximum potential hazard. When it is determined that conditions exist which create an additional area (beyond the initial zone of maximum potential hazard) vulnerable to possible hazard, public areas in the additional hazardous area will be evacuated.
  - ii. In the event of a disaster, after the public areas have been evacuated and traffic stopped, it is expected that local civil authorities will have arrived and within a few hours will have assumed direction of and control of the public, including all public areas. Carbon Storage Solutions will fully cooperate with these authorities and will exert every effort by careful advice to such authorities to prevent panic or rumors.
  - iii. Carbon Storage Solutions will dispatch appropriate personnel to the disaster site as soon as possible. The company's personnel will cooperate with and provide such information to civil authorities as they might require.

## **Section 6**

### **Coordination with First Responder Agencies**

1. Carbon Storage Solutions will communicate drill spud and casing operation dates to the Weld County Office of Emergency Management for coordination/communication with local first responders. These start dates will be provided a minimum of seven (7) business days prior to commencement or change in development operations.
2. In the event of an emergency requiring First Responders, Unified Command will be established between the Carbon Storage Solutions appointed company man on location and First Responders present. A unified Command post will be established based on conditions present at the time of the incident.

## Tactical Response Card

Location Address Lat: 40.466418° Long: -104.859778°

### Notifications

1. National Response Center:
  - a. 800-424-8802
2. MGE 24-Hour Hotline:
  - a. 720-545-5717
3. Colorado Department of Natural Resources:
  - a. 303-866-3311
4. Weld County OEM:
  - a. 970-350-9600
5. Colorado Energy & Carbon Management Commission (ECMC):
  - a. 303-894-2100
6. ECMC Field Supervisors:
  - a. 303-894-2100
7. Colorado Dept of Public Health and Environment:
  - a. 877-518-5608

### Response Objectives

Ensure safety of the public, first responders, CSS employees, and contractors  
 Minimize the impact to the environment and local community. Contain and recover released product to the extent possible.

### Critical Receptors

Note: This Tactical Response =Card is a reference tool and is intended to provide guidance during an actual event or exercise. Placement of resources may need to be adjusted according to environmental variables. It is the responsibility of emergency response personnel to be trained in response and to be able to make adjustments to the card as needed.

