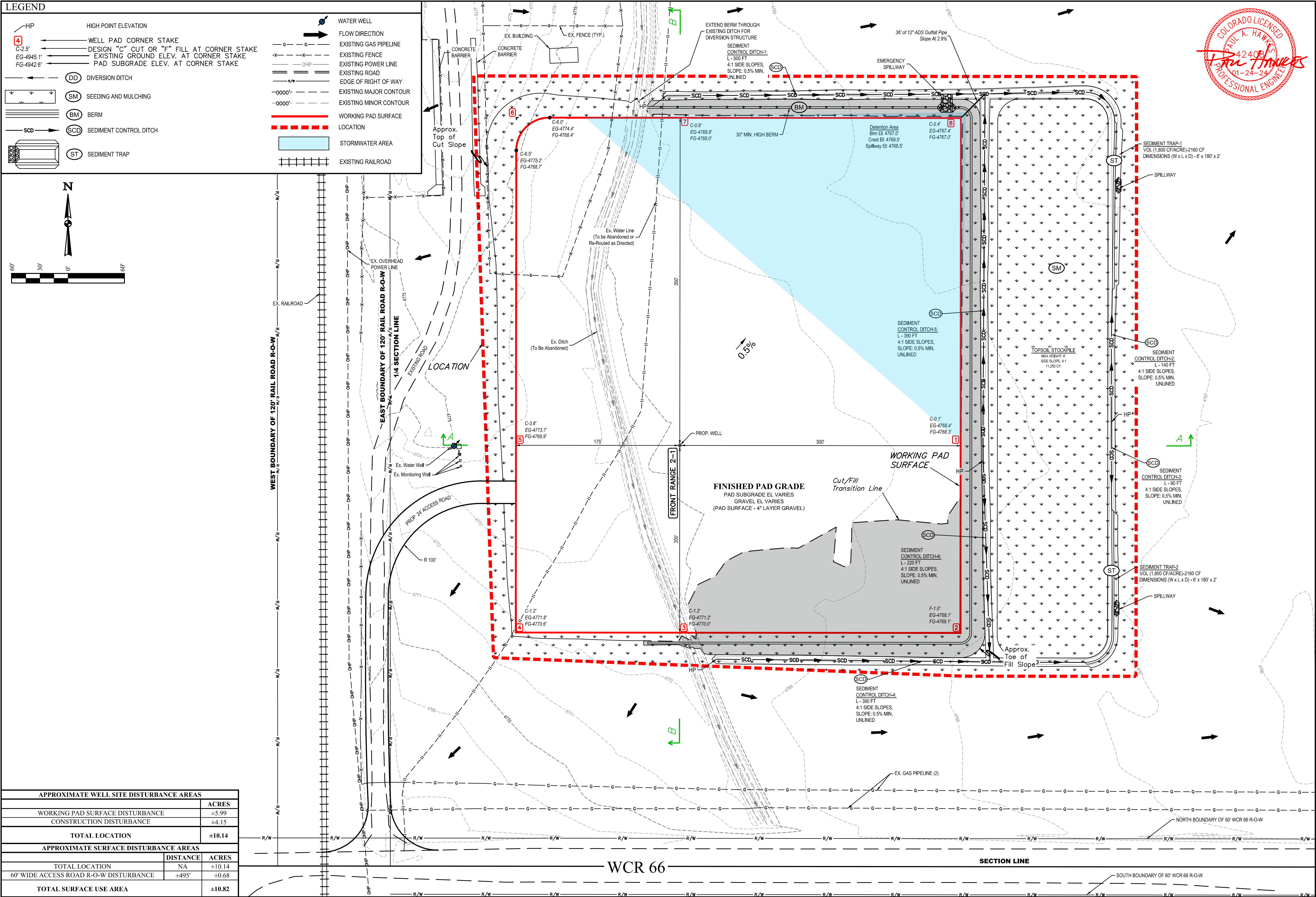
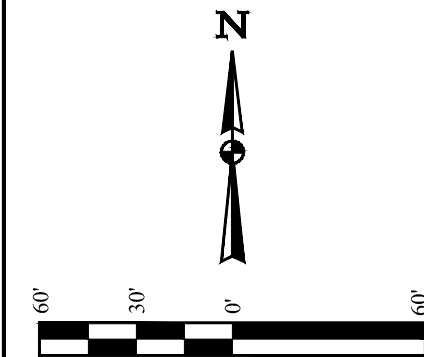
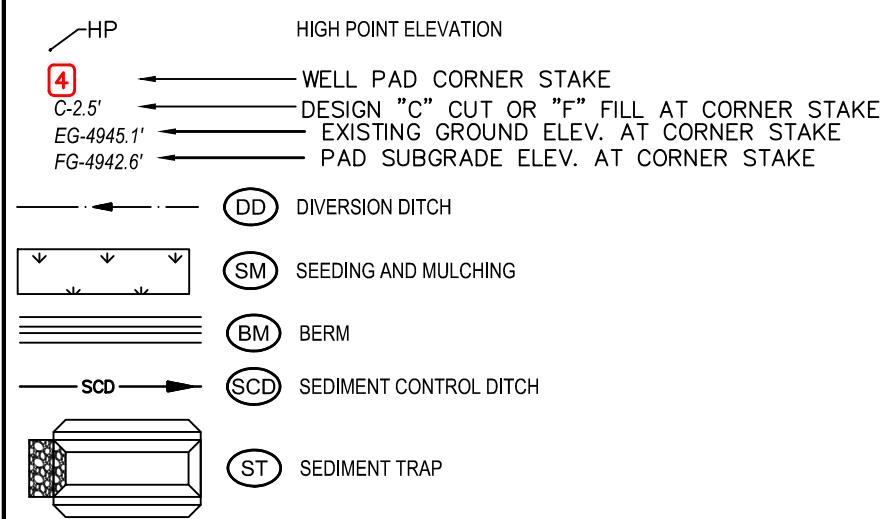



LEGEND



APPROXIMATE WELL SITE DISTURBANCE AREAS		
		ACRES
WORKING PAD SURFACE DISTURBANCE		±5.99
CONSTRUCTION DISTURBANCE		±4.15
TOTAL LOCATION		±10.14
APPROXIMATE SURFACE DISTURBANCE AREAS		
	DISTANCE	ACRES
TOTAL LOCATION	NA	±10.14
60' WIDE ACCESS ROAD R-O-W DISTURBANCE	±495'	±0.68
TOTAL SURFACE USE AREA		±10.82

- NOTES:**
- Rounded corners shown at 35' radius
 - Contours shown at 1' intervals.
 - Pad Cut/Fill slopes 4:1 (Typ.)
 - Overall working pad surface = 550' x 475'

 UELTS, LLC
Corporate Office * 85 South 200 East
Vernal, UT 84078 * (435) 789-1017

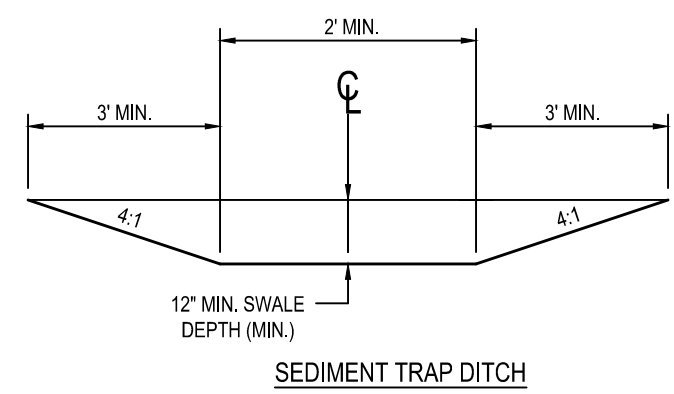
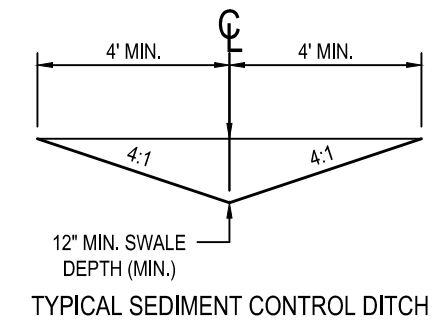
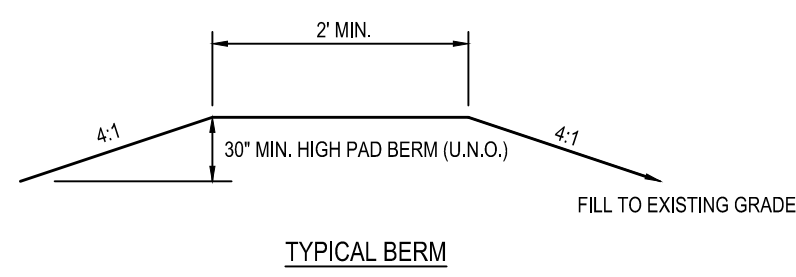
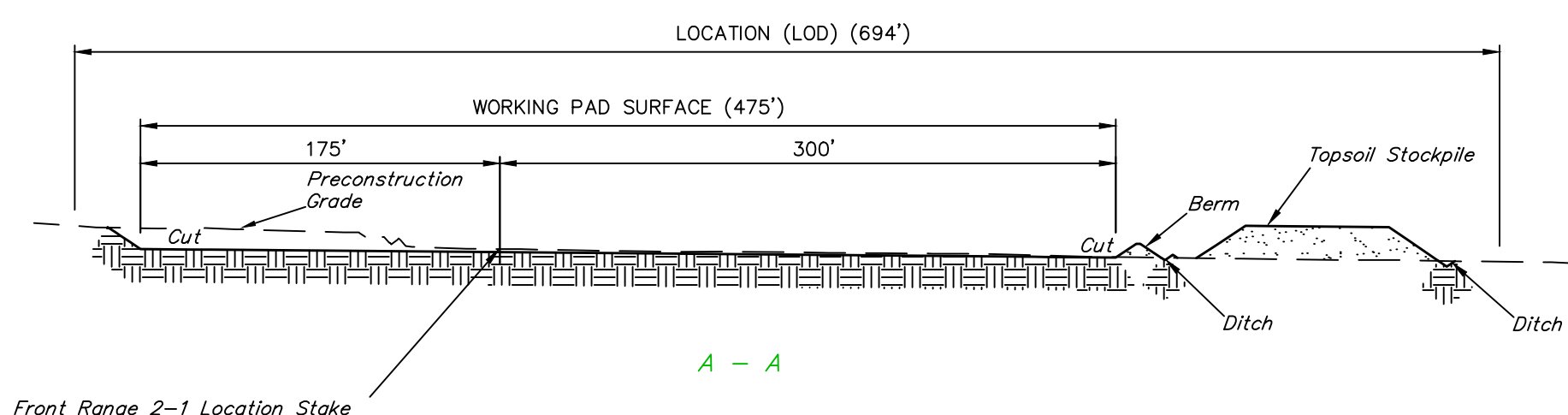
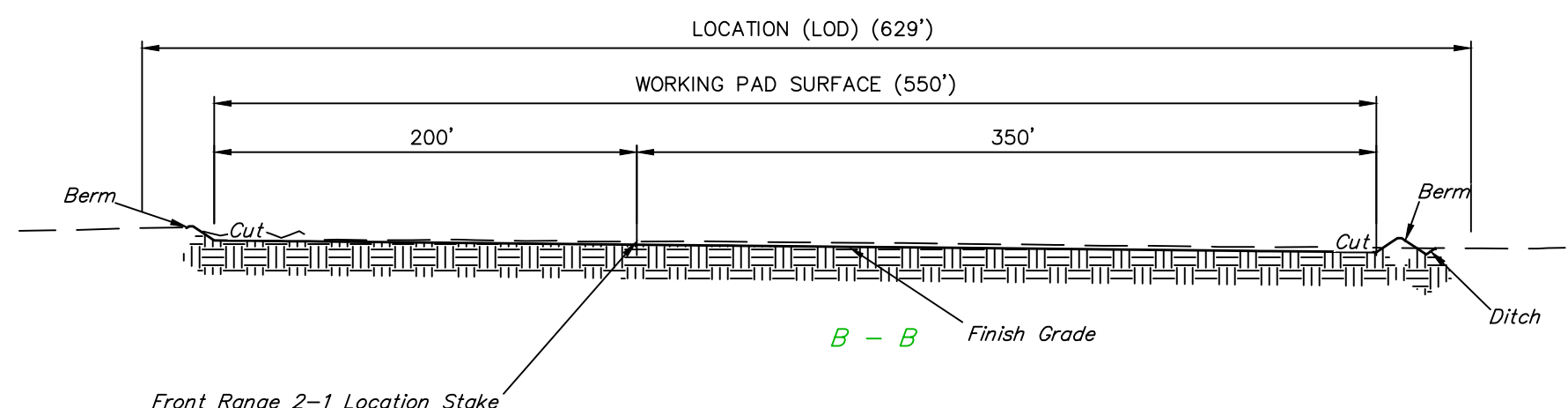
CARBON STORAGE SOLUTIONS

FRONT RANGE 2
450' FSL 2325' FEL
SW 1/4 SE 1/4, SECTION 23, T6N, R67W, 6th P.M.
WELD COUNTY, COLORADO

SURVEYED BY	ORION RICE, J.F.	11-20-23	SCALE
DRAWN BY	K.C.	01-24-24	1" = 60'

CONSTRUCTION LAYOUT - PLAN VIEW

1" = 30'
X-Section
Scale
1" = 80'



APPROXIMATE WELL SITE DISTURBANCE AREAS			APPROXIMATE EARTHWORK QUANTITIES	
	DISTANCE	ACRES		
WORKING PAD SURFACE DISTURBANCE		±5.99	(12") TOPSOIL STRIPPING (EST. ONLY)	11,250 Cu. Yds.
CONSTRUCTION DISTURBANCE		±4.15	REMAINING LOCATION	7,300 Cu. Yds.
TOTAL LOCATION		±10.14	TOTAL CUT	18,550 Cu. Yds.
APPROXIMATE SURFACE DISTURBANCE AREAS			FILL	7,300 Cu. Yds.
	DISTANCE	ACRES	EXCESS MATERIAL	11,250 Cu. Yds.
LOCATION	NA	±10.14	TOPSOIL	11,250 Cu. Yds.
60' WIDE ACCESS ROAD R-O-W DISTURBANCE	±495'	±0.68	EARTHWORK BALANCE	0 Cu. Yds.
TOTAL SURFACE USE AREA		±10.82		

- NOTES:
- Fill quantity includes 10% for compaction.
 - Pad Cut/Fill slopes 4:1 (Typ.)
 - Topsoil quantity is an estimate of 12" deep across the pad grading area. Actual site conditions may vary. Field adjust grades as necessary to balance earthwork.
 - Overall working pad surface = 550' x 475'



UELS, LLC
Corporate Office * 85 South 200 East
Vernal, UT 84078 * (435) 789-1017

CARBON STORAGE SOLUTIONS

FRONT RANGE 2
450' FSL 2325' FEL
SW 1/4 SE 1/4, SECTION 23, T6N, R67W, 6th P.M.
WELD COUNTY, COLORADO

SURVEYED BY	ORION RICE, J.F.	11-20-23	SCALE
DRAWN BY	K.C.	01-24-24	AS-SHOWN

CONSTRUCTION LAYOUT - CROSS SECTIONS