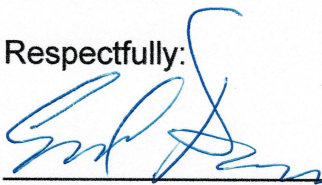


Certification:

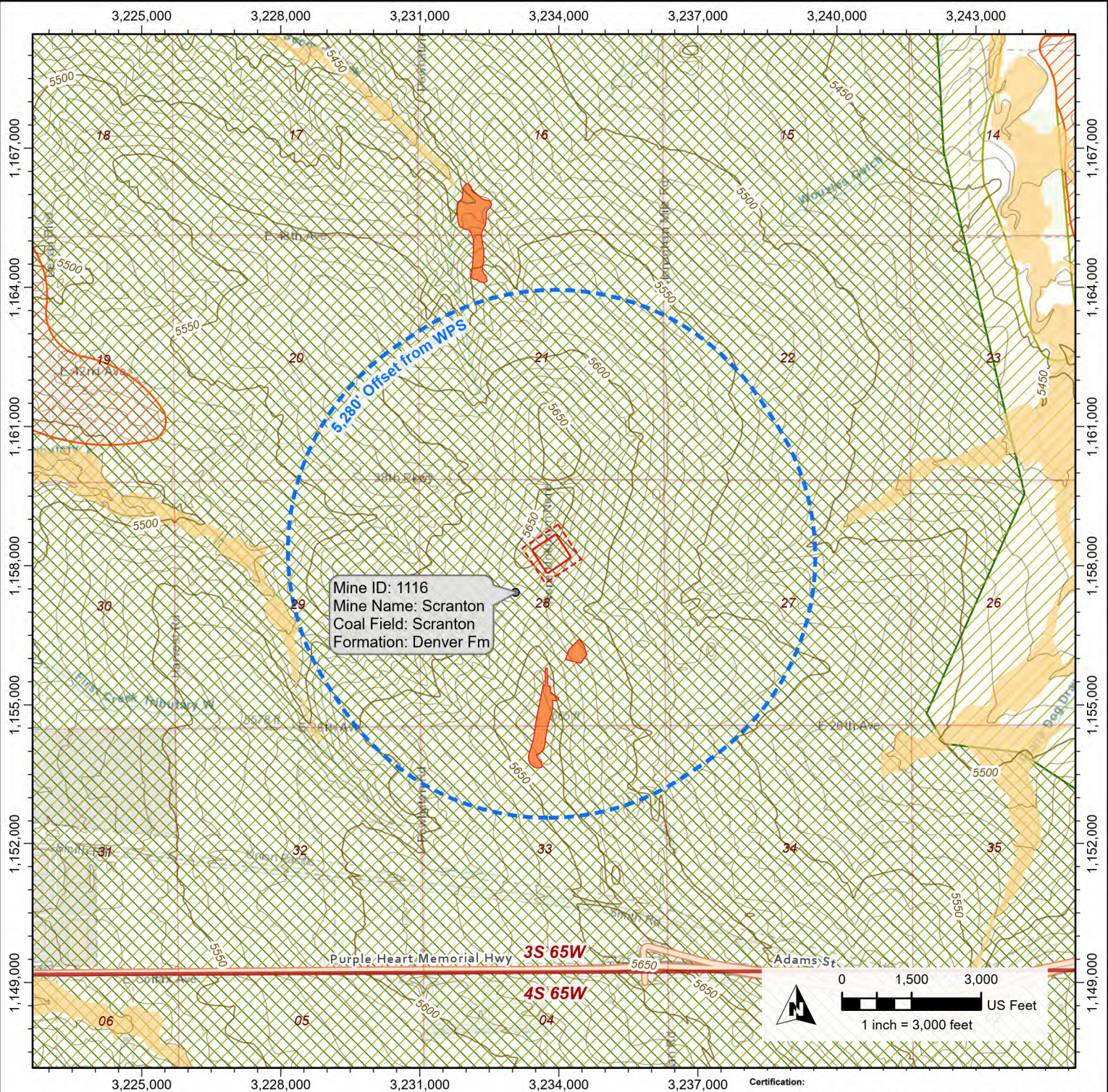
I certify that I am a Professional Geologist, having met the educational requirements and professional work experience required by C.R.S. 23-41-208(b). I have reviewed information pertaining to this Oil and Gas Location and the surrounding area, and have identified Geologic Hazards within a one-mile radius that could pose a significant risk to the proposed Oil and Gas Operations or Location and may require mitigation. The operator was notified of the potential geologic hazards and has developed the measures included in this plan to mitigate the risks associated with these geologic hazards. Those mitigation measures are designed to reduce the likelihood that the geologic hazards will threaten public health, safety, welfare, the environment or wildlife resources as related to the proposed Oil and Gas Location and any operations that may occur there..

Respectfully:



9/28/23

Errol P. Lawrence, Senior Geologist, PG
Petrotek Engineering Corporation



Facility

- Oil & Gas Location
- Working Pad Surface

Area of Review

- 5,280' Offset from Working Pad Surface

Elevation Contours (USGS)

- Major Contour (C.I. = 50')
- Minor Contour (C.I. = 10')

Historic Coal Mines

- Historic Coal Mine
- Undermined Area

Floodplain

- 100-Year Floodplain Extent

Collapsible Soils

- EG-14 Eolian (Wind-Blown) Deposits
- EG-14 Dune and Sheet Sand Deposits
- EG-14 Cretaceous and Tertiary Formations

Certification:

I certify that I am a Professional Geologist, having met the educational requirements and professional work experience required by C.R.S. 23-41-208(b). I have reviewed information pertaining to this Oil and Gas Location and the surrounding area, and have identified the following Geologic Hazards within a one-mile radius: collapsible soils and abandoned coal mines.

Respectfully,

Errol P. Lawrence 9/28/23
Errol P. Lawrence, Senior Geologist, PG
Petrotek Engineering Corporation



Exhibit 1 Geologic Hazards Map

2023 Geologic Hazards Assessment

Scale: 1:36,000

Date: September 2023

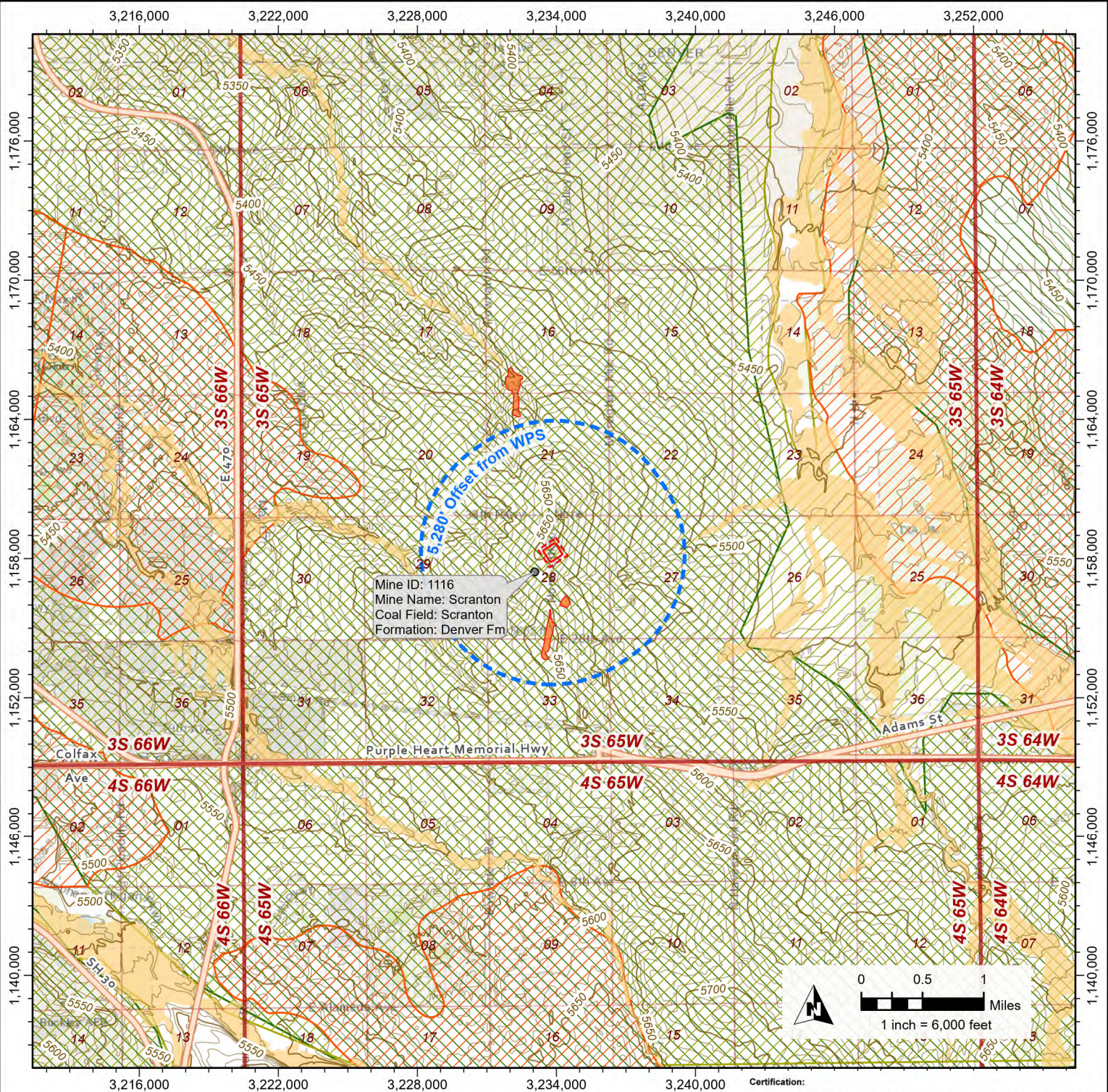
Ex_01_GMT - Geo Hazards V1

By: WEK

Checked: DH

Petrotek

5935 South Zang Street, Suite 200
Littleton, Colorado 80127 USA
303-290-9414
www.petrotek.com



Facility

- Oil & Gas Location
- Working Pad Surface

Area of Review

- 5,280' Offset from Working Pad Surface

Elevation Contours (USGS)

- Major Contour (C.I. = 50')
- Minor Contour (C.I. = 10')

Historic Coal Mines

- Historic Coal Mine
- Undermined Area

Floodplain

- 100-Year Floodplain Extent

Collapsible Soils

- EG-14 Eolian (Wind-Blown) Deposits
- EG-14 Dune and Sheet Sand Deposits
- EG-14 Cretaceous and Tertiary Formations

Certification:

I certify that I am a Professional Geologist, having met the educational requirements and professional work experience required by C.R.S. 23-41-208(b). I have reviewed information pertaining to this Oil and Gas Location and the surrounding area, and have identified the following Geologic Hazards within a one-mile radius: collapsible soils and abandoned coal mines.

Respectfully,

Errol P. Lawrence 9/28/23
Errol P. Lawrence, Senior Geologist, PG
Petrotek Engineering Corporation

GMT
Exploration Company LLC

Exhibit 2
Geologic Hazards Map
2023 Geologic Hazards Assessment

Scale: 1:72,000

Date: September 2023

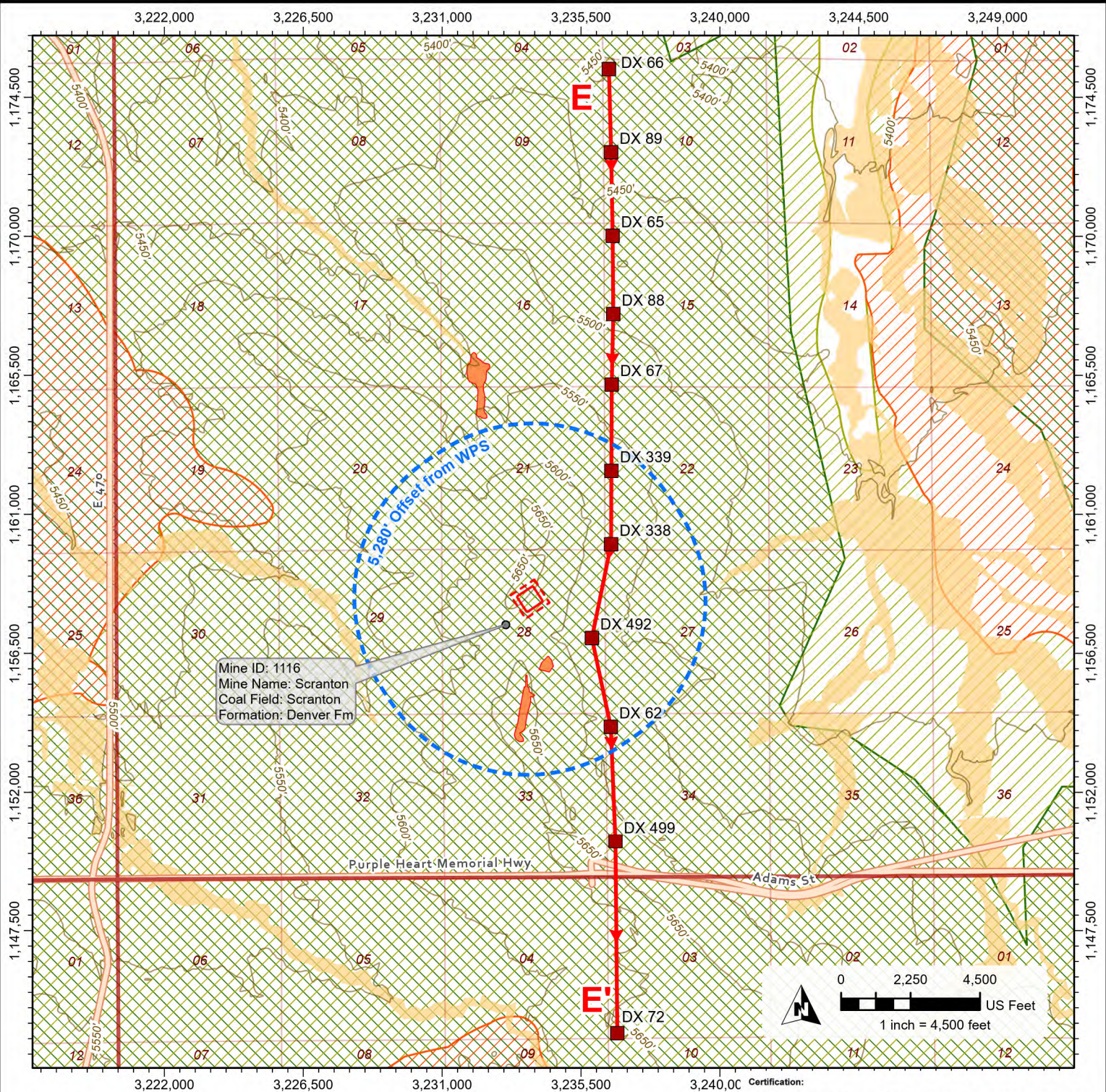
Ex_02_GMT - Geo Hazards V2

By: WEK

Checked: DH

Petrotek

5935 South Zang Street, Suite 200
Littleton, Colorado 80127 USA
303-290-9414
www.petrotek.com



Facility

- Oil & Gas Location
- Working Pad Surface

Area of Review

- 5,280' Offset from Working Pad Surface

Elevation Contours (USGS)

- Elevation Contour (C.I. = 50')

Historic Coal Mines

- Historic Coal Mine
- Undermined Area

Cross Section

- Mineral Exploration Hole
- ➔ Cross Section Line (E-E')

Floodplain

- 100-Year Floodplain Extent

Collapsible Soils

- EG-14 Eolian (Wind-Blown) Deposits
- EG-14 Dune and Sheet Sand Deposits
- EG-14 Cretaceous and Tertiary Formations

Certification:

I certify that I am a Professional Geologist, having met the educational requirements and professional work experience required by C.R.S. 23-41-208(b). I have reviewed information pertaining to this Oil and Gas Location and the surrounding area, and have identified the following Geologic Hazards within a one-mile radius: collapsible soils and abandoned coal mines.

Respectfully,

 9/28/23
Errol P. Lawrence, Senior Geologist, PG
Petrotek Engineering Corporation

GMT
Exploration Company LLC

Exhibit 3 Geologic Hazards Map and Cross Section E-E'

2023 Geologic Hazards Assessment

Scale: 1:54,000

Date: September 2023

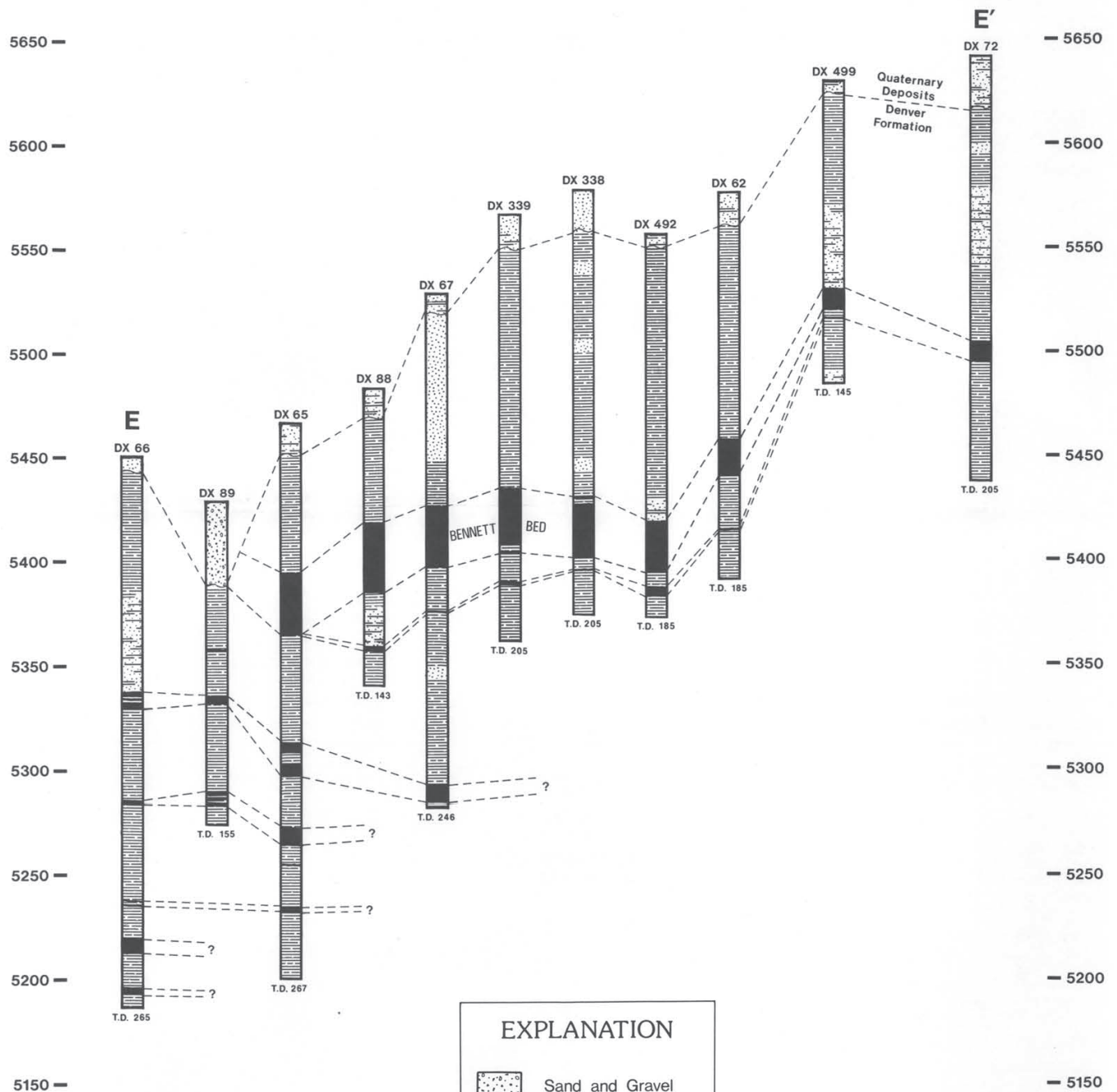
Ex_03_GMT - XS E-E'

By: WEK

Checked: DH

Petrotek

5935 South Zang Street, Suite 200
Littleton, Colorado 80127 USA
303-290-9414
www.petrotek.com



EXPLANATION

	Sand and Gravel
	Sand or Sandstone
	Sandy Siltstone or Silty Sandstone
	Siltstone
	Claystone
	Coal or Lignite

Horizontal Scale 1:50,000

Vertical Scale 1:600

Vertical Exaggeration 1:83.3

Drafted by

M. V. Persichetti

Certification:

I certify that I am a Professional Geologist, having met the educational requirements and professional work experience required by C.R.S. 23-41-208(b). I have reviewed information pertaining to this Oil and Gas Location and the surrounding area, and have identified the following Geologic Hazards within a one-mile radius: collapsible soils and abandoned coal mines.

Respectfully,

Errol P. Lawrence, Senior Geologist, PG
Petrotek Engineering Corporation

Source: Brand, K. E. and W. Eakins, 1980, Coal Resources of the Denver East 1/4 x 1° Quadrangle, Colorado, Resource Series 13, Department of Natural Resources, Colorado Geological Survey.



GMT
Exploration Company LLC

Exhibit 4 Cross Section E-E'

2023 Geologic Hazards Assessment

Scale: NTS

Date: September 2023

Ex_04_GMT - Cross Sec.pdf

By: WEK

Checked: DH

Petrotek

5935 South Zang Street, Suite 200
Littleton, Colorado 80127 USA
303-290-9414
www.petrotek.com