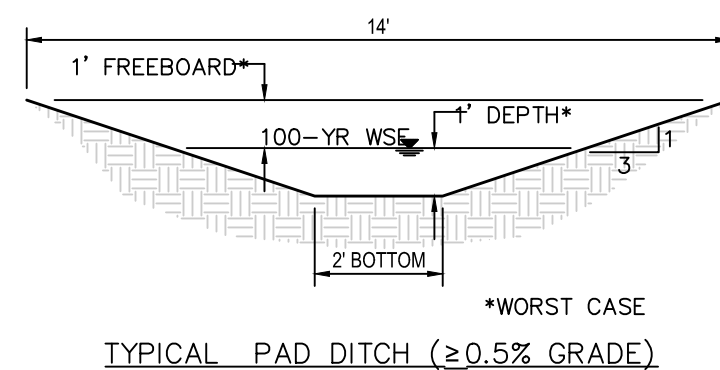
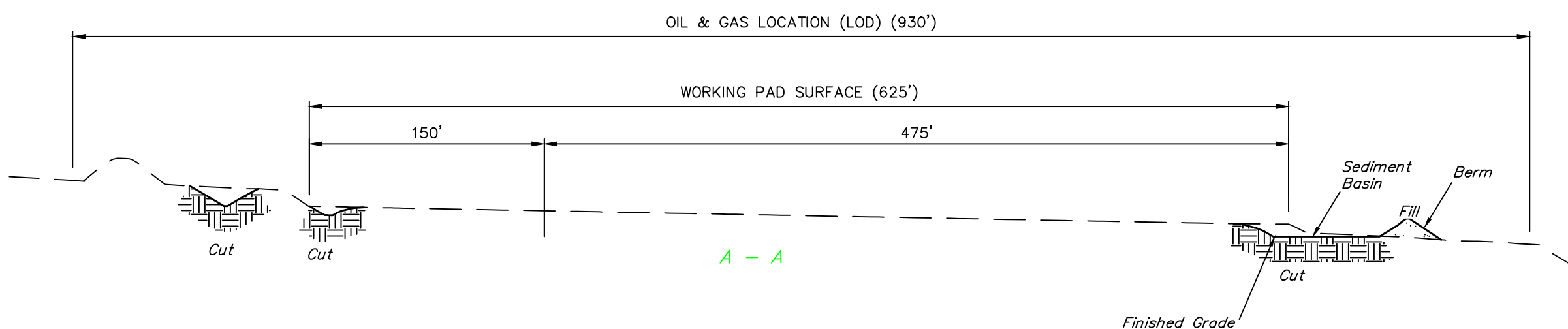
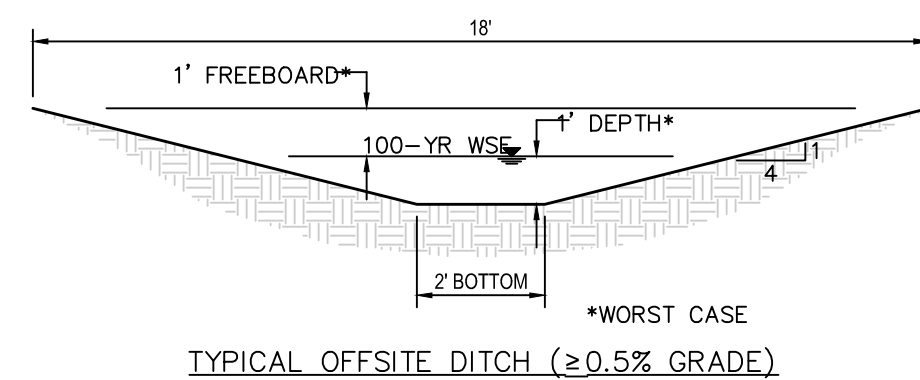
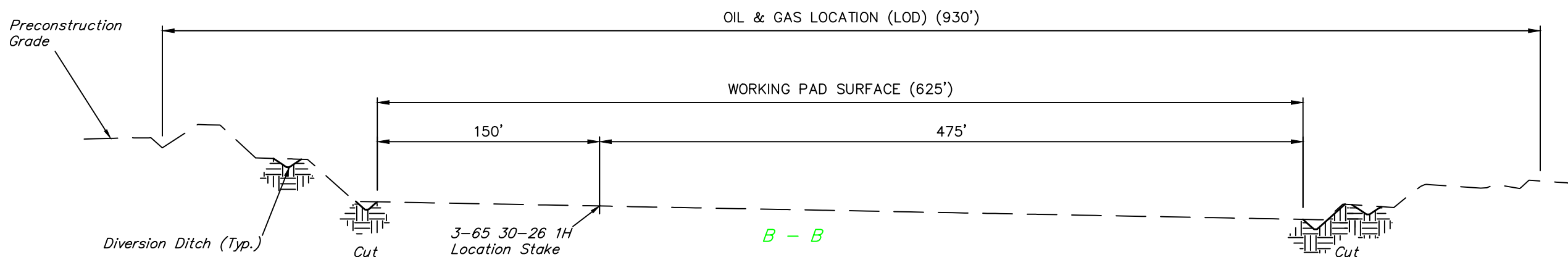
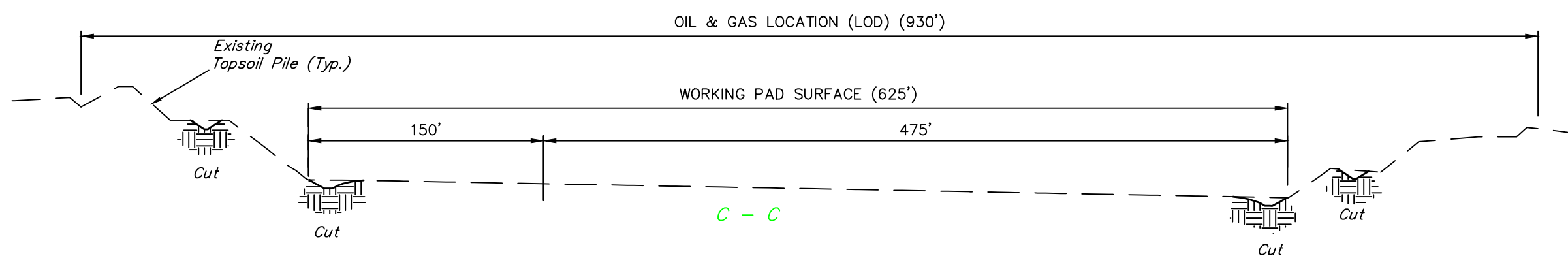
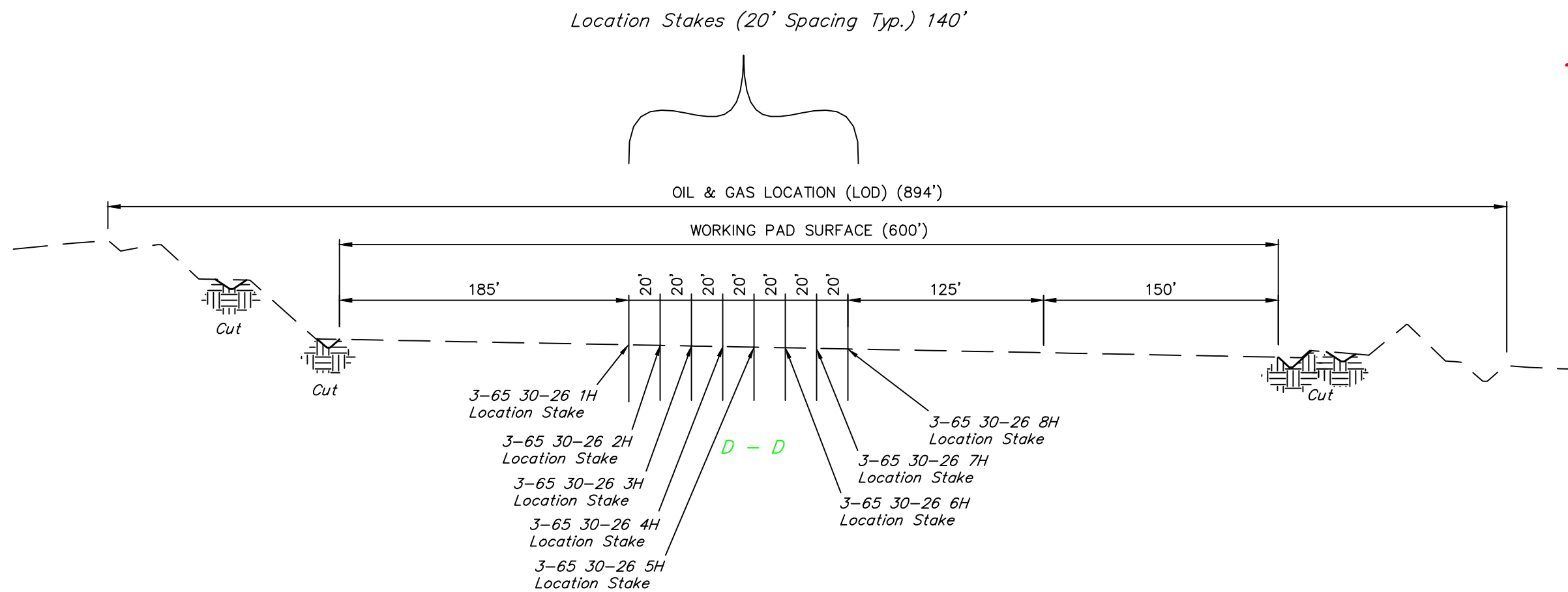




1" = 30'  
X-Section  
Scale  
1" = 80'



APPROXIMATE EARTHWORK QUANTITIES	
(10") TOPSOIL STRIPPING	25,090 Cu. Yds.
WELL PAD CUT	2,270 Cu. Yds.
DITCH & SED BASIN CUT	3,910 Cu. Yds.
<b>TOTAL CUT</b>	<b>31,270 Cu. Yds.</b>
WELL PAD FILL	320 Cu. Yds.
DITCH & SED BASIN FILL	1,500 Cu. Yds.
<b>TOTAL FILL</b>	<b>1,820 Cu. Yds.</b>
EXCESS MATERIAL	29,450 Cu. Yds.
TOPSOIL TO BE USED	7,240 Cu. Yds.
TOPSOIL TO BE STOCKPILED	17,850 Cu. Yds.
<b>SPOILS TO BE STOCKPILED</b>	<b>4,360 Cu. Yds.</b>
GRAVEL BASE ON PAD (6")	6,920 Cu. Yds.

APPROXIMATE WELL SITE DISTURBANCE AREAS	
	ACRES
WORKING PAD SURFACE DISTURBANCE	$\pm 8.585$
CONSTRUCTION DISTURBANCE	$\pm 10.490$
<b>TOTAL OIL &amp; GAS LOCATION</b>	<b><math>\pm 19.075</math></b>

APPROXIMATE SURFACE DISTURBANCE AREAS		
	DISTANCE	ACRES
TOTAL OIL & GAS LOCATION	NA	$\pm 19.075$
60' WIDE ACCESS ROAD R-O-W DISTURBANCE	$\pm 2325'$	$\pm 3.202$
50' WIDE PIPELINE CORRIDOR DISTURBANCE	$\pm 2827.68'$	$\pm 3.246$
<b>TOTAL SURFACE USE AREA</b>		<b><math>\pm 25.523</math></b>

#### NOTES:

- Fill quantity includes 10% for compaction.
- Calculations based on 10" of topsoil stripping.
- Cut/Fill slopes 3:1 (Typ.).



UELS, LLC  
Corporate Office \* 85 South 200 East  
Vernal, UT 84078 \* (435) 789-1017

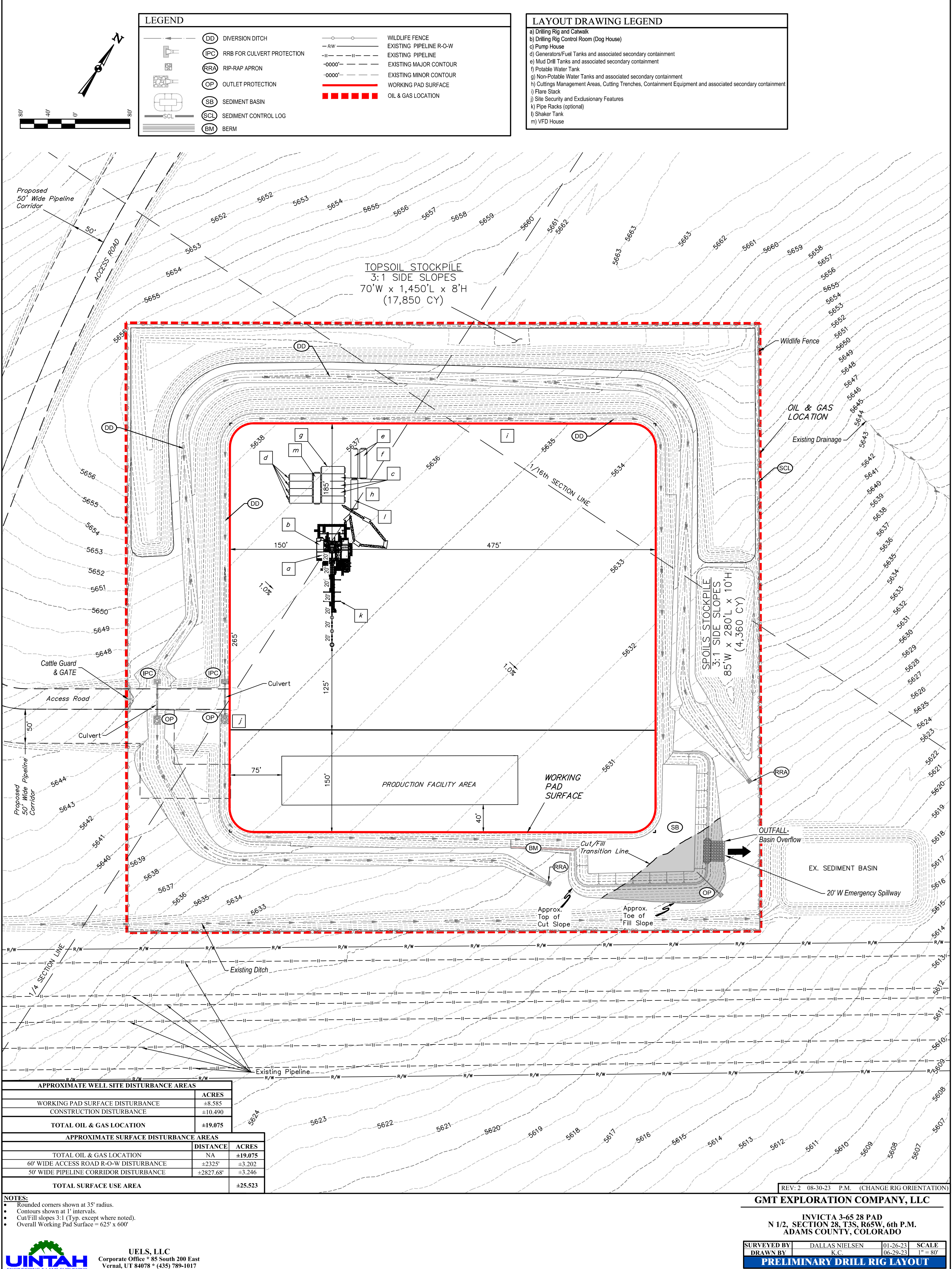
REV: 1 07-24-23 P.M. (PIPELINE R-O-W CHANGE)

GMT EXPLORATION COMPANY, LLC

INVICTA 3-65 28 PAD  
N 1/2, SECTION 28, T3S, R65W, 6th P.M.  
ADAMS COUNTY, COLORADO

SURVEYED BY	DALLAS NIELSEN	01-26-23	SCALE
DRAWN BY	K.C.	06-29-23	AS SHOWN
CONSTRUCTION LAYOUT - CROSS SECTIONS			





**NOTES:**  
• Rounded corners shown at 35' radius.  
• Contours shown at 1' intervals.  
• Cut/Fill slopes 3:1 (Typ. except where noted).  
• Overall Working Pad Surface = 625' x 600'

**UELTS, LLC**  
Corporate Office \* 85 South 200 East  
Vernal, UT 84078 \* (435) 789-1017

REV: 2 08-30-23 P.M. (CHANGE RIG ORIENTATION)

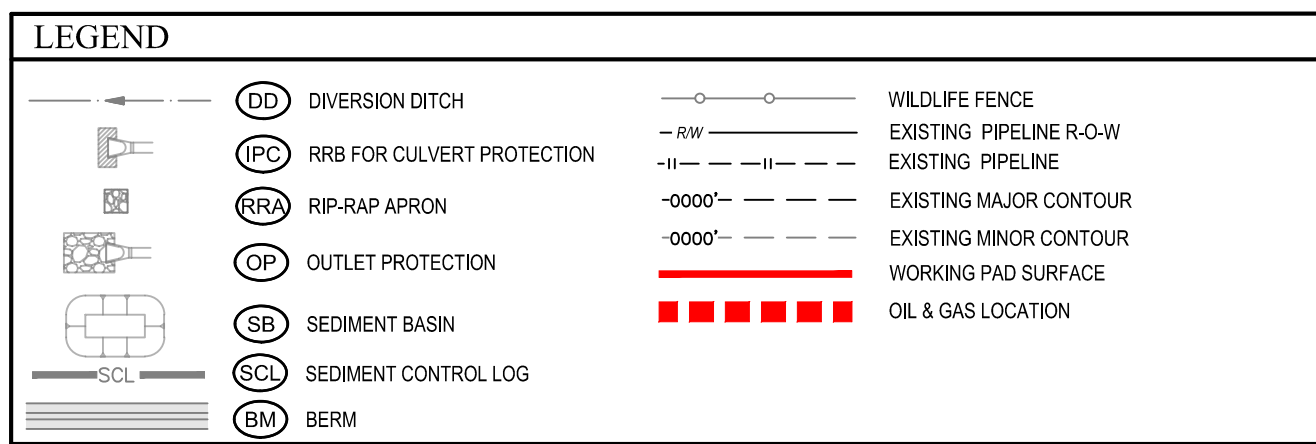
**GMT EXPLORATION COMPANY, LLC**

INVICTA 3-65 28 PAD  
N 1/2, SECTION 28, T3S, R65W, 6th P.M.  
ADAMS COUNTY, COLORADO

SURVEYED BY	DALLAS NIELSEN	01-26-23	SCALE
DRAWN BY	K.C.	06-29-23	1" = 80'

**PRELIMINARY DRILL RIG LAYOUT**





- 
- The site plan illustrates the proposed well site disturbance areas, including the topsoil stockpile, production facility area, working pad surface, and various infrastructure elements like roads, pipelines, and fences. The plan also shows existing features such as the sediment basin and emergency spillway.
- | APPROXIMATE WELL SITE DISTURBANCE AREAS |          |         |
|---|----------|---------|
|   | DISTANCE | ACRES   |
| WORKING PAD SURFACE DISTURBANCE         |          | ±8.585  |
| CONSTRUCTION DISTURBANCE                |          | ±10.490 |
| TOTAL OIL & GAS LOCATION                |          | ±19.075 |
- 
- | APPROXIMATE SURFACE DISTURBANCE AREAS  |           |                |
|--|-----------|----------------|
|  | DISTANCE  | ACRES          |
| TOTAL OIL & GAS LOCATION               | NA        | ±19.075        |
| 60' WIDE ACCESS ROAD R-O-W DISTURBANCE | ±2325'    | ±3.202         |
| 50' WIDE PIPELINE CORRIDOR DISTURBANCE | ±2827.68' | ±3.246         |
| <b>TOTAL SURFACE USE AREA</b>          |           | <b>±25.523</b> |
- REV: 1 07-24-23 P.M. (PIPELINE R-O-W CHANGE)

APPROXIMATE WELL SITE DISTURBANCE AREAS		
	ACRES	
WORKING PAD SURFACE DISTURBANCE		±8.585
CONSTRUCTION DISTURBANCE		±10.490
TOTAL OIL & GAS LOCATION		±19.075
APPROXIMATE SURFACE DISTURBANCE AREAS		
	DISTANCE	ACRES
TOTAL OIL & GAS LOCATION	NA	±19.075
60' WIDE ACCESS ROAD R-O-W DISTURBANCE	+2325'	±3.202
50' WIDE PIPELINE CORRIDOR DISTURBANCE	+2827.68'	±3.246
TOTAL SURFACE USE AREA		±25.523

**NOTES:**

- Rounded corners shown at 35' radius.
- Contours shown at 1' intervals.
- Cut/Fill slopes 3:1 (Typ. except where noted).
- Overall Working Pad Surface = 625' x 600'



**UELS, LLC**  
Corporate Office \* 85 South 200 East  
Vernal, UT 84078 \* (435) 789-1017

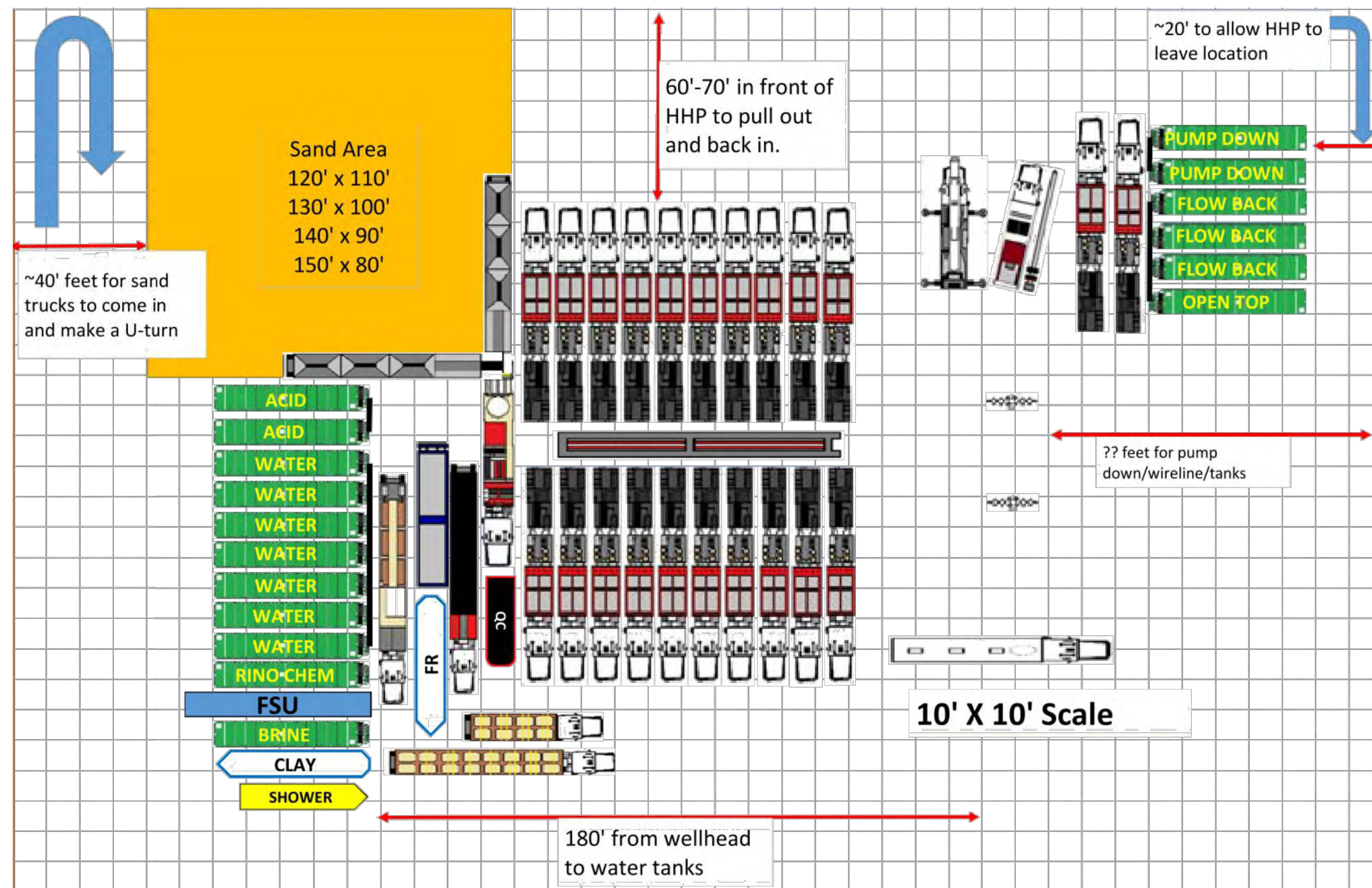
REV: 1 07-24-23 P.M. (PIPELINE R-O-W CHANGE)

**GMT EXPLORATION COMPANY, LLC**

INVICTA 3-65 28 PAD  
N 1/2, SECTION 28, T3S, R65W, 6th P.M.  
ADAMS COUNTY, COLORADO

<b>SURVEYED BY</b>	DALLAS NIELSEN	01-26-23	<b>SCALE</b>
<b>DRAWN BY</b>	K.C.	06-29-23	1" = 80'
<b>PRELIMINARY WELL COMPLETION &amp; STIMULATION LAYOUT</b>			





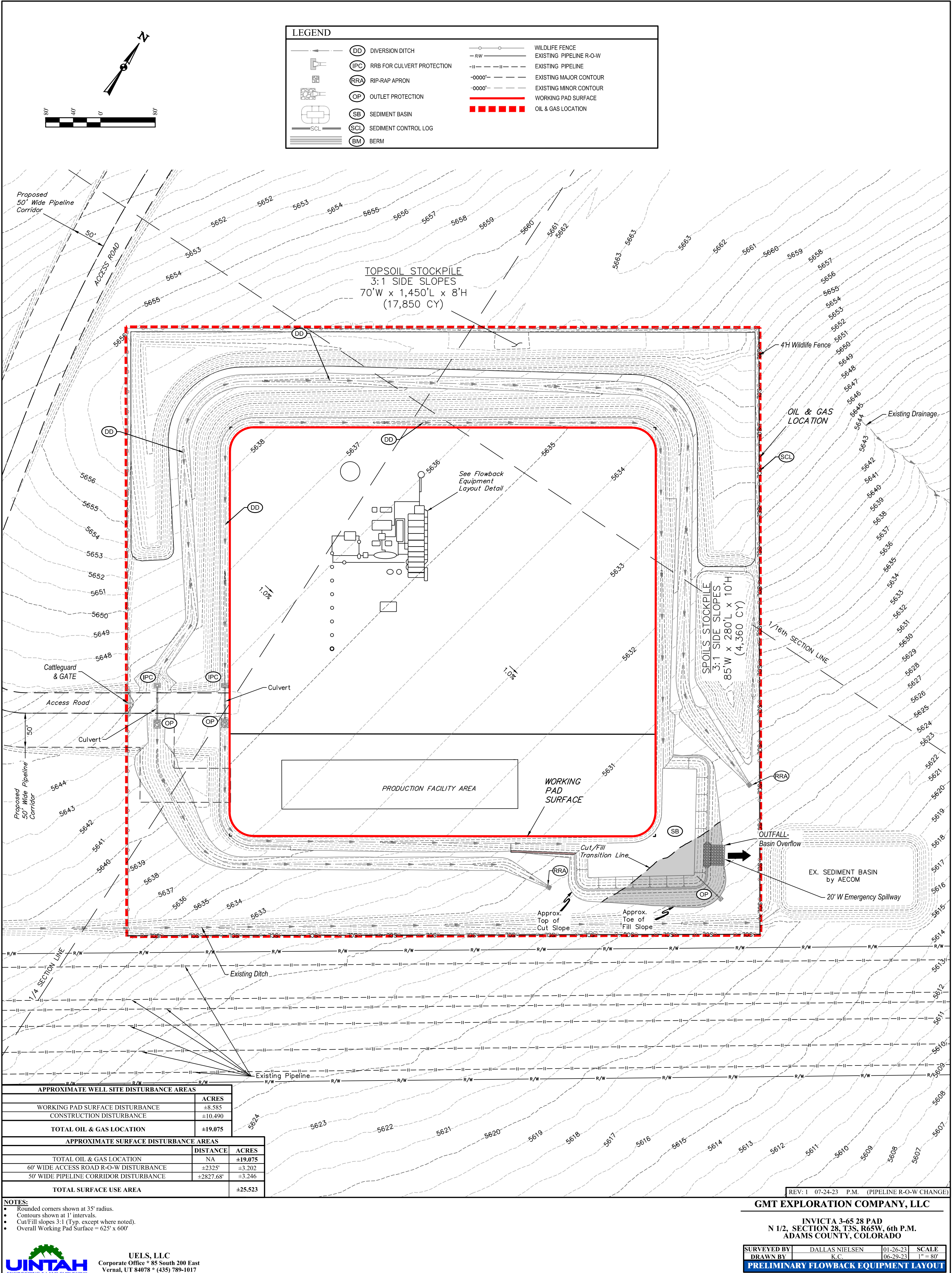
**FRAC LAYOUT**  
SCALE: N.T.S.

**GMT EXPLORATION COMPANY, LLC**

INVICTA 3-65 28 PAD  
N 1/2, SECTION 28, T3S, R65W, 6th P.M.  
ADAMS COUNTY, COLORADO

SURVEYED BY	DALLAS NIELSEN	01-26-23	SCALE
DRAWN BY	K.C.	06-29-23	N.T.S.
WELL COMPLETION & STIMULATION LAYOUT DETAIL			





LEGEND

DD

IPC

RRA

OP

SB

SCL

BM

WILDLIFE FENCEEXISTING PIPELINE R-O-WEXISTING PIPELINEEXISTING MAJOR CONTOUREXISTING MINOR CONTOURWORKING PAD SURFACEOIL & GAS LOCATION

APPROXIMATE WELL SITE DISTURBANCE AREAS		
		ACRES
WORKING PAD SURFACE DISTURBANCE		±8.585
CONSTRUCTION DISTURBANCE		±10.490
TOTAL OIL & GAS LOCATION		±19.075
APPROXIMATE SURFACE DISTURBANCE AREAS		
	DISTANCE	ACRES
TOTAL OIL & GAS LOCATION		NA ±19.075
60' WIDE ACCESS ROAD R-O-W DISTURBANCE		±2325' ±3.202
50' WIDE PIPELINE CORRIDOR DISTURBANCE		±2827.68' ±3.246
TOTAL SURFACE USE AREA		±25.523

- NOTES:
- 
- REV: 1 07-24-23 P.M. (PIPELINE R-O-W CHANGE)

GMT EXPLORATION COMPANY, LLC

INVICTA 3-65 28 PAD  
N 1/2, SECTION 28, T3S, R65W, 6th P.M.  
ADAMS COUNTY, COLORADO

SURVEYED BY

DALLAS NIELSEN

DRAWN BY

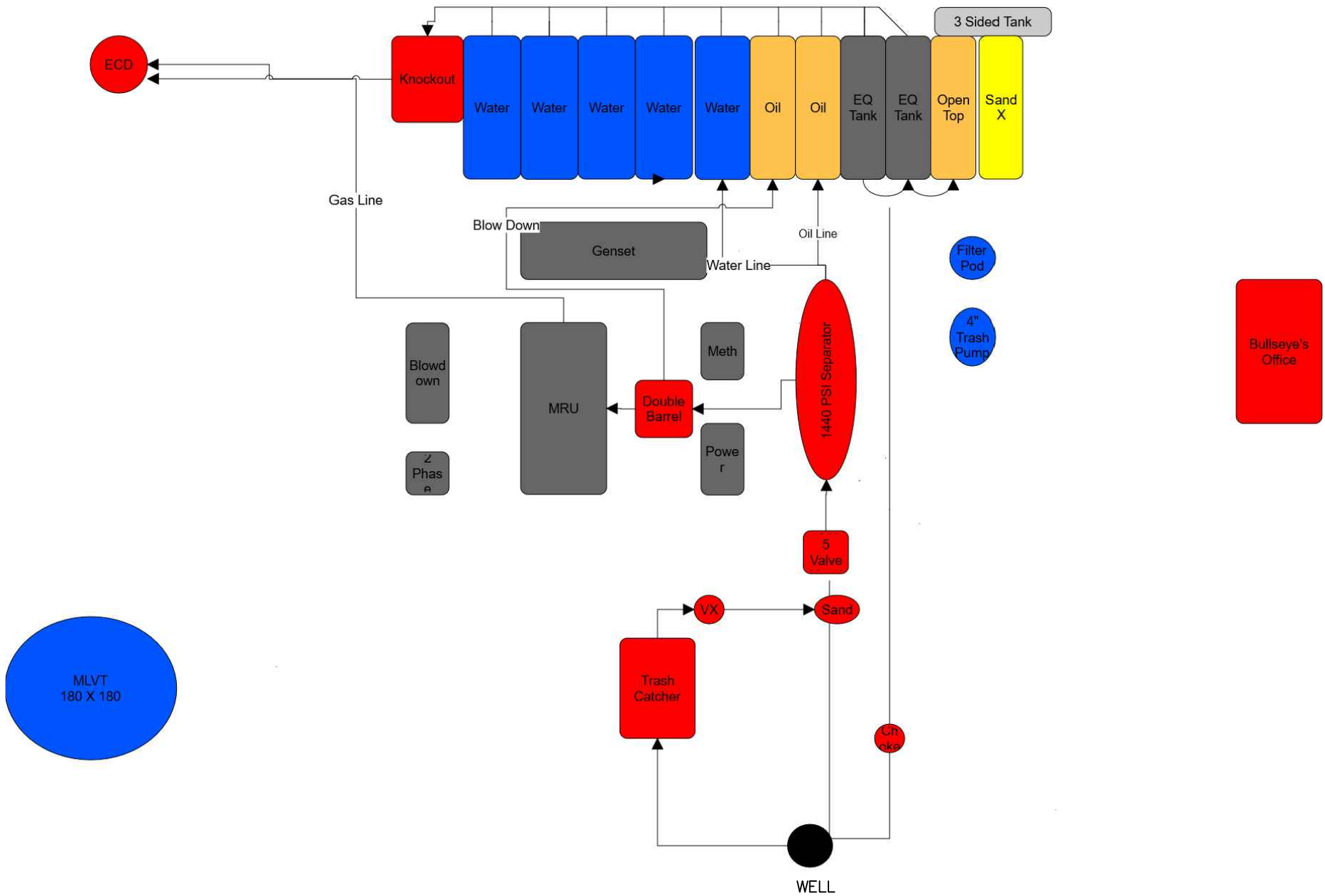
K.C.

01-26-23

06-29-23

SCALE

1" = 80'
- PRELIMINARY FLOWBACK EQUIPMENT LAYOUT



GMT EXPLORATION COMPANY, LLC

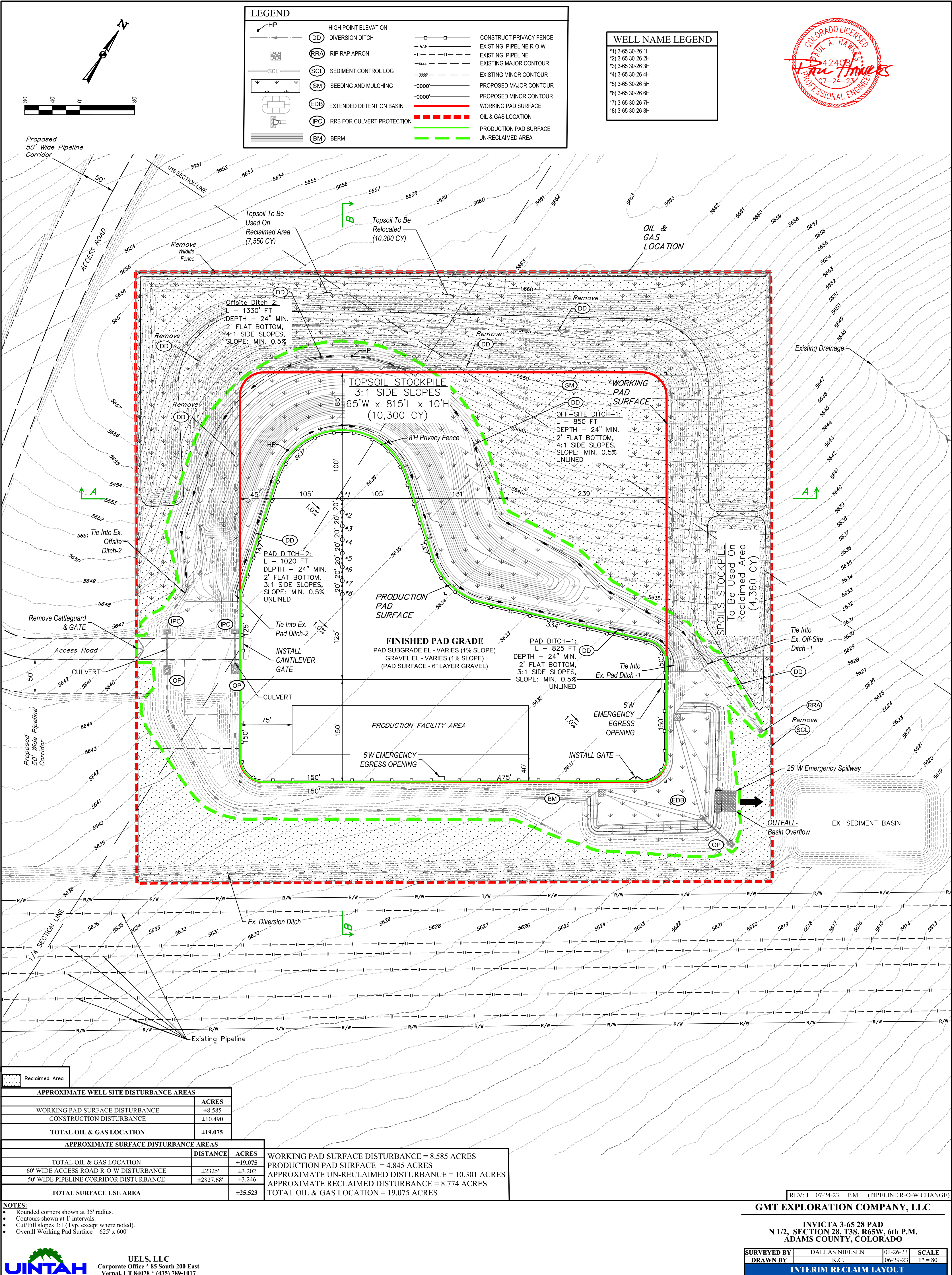
INVICTA 3-65 28 PAD  
N 1/2, SECTION 28, T3S, R65W, 6th P.M.  
ADAMS COUNTY, COLORADO

SURVEYED BY	DALLAS NIELSEN	01-26-23	SCALE
DRAWN BY	K.C.	06-29-23	N.T.S
FLOWBACK EQUIPMENT LAYOUT DETAIL			



UELS, LLC  
Corporate Office \* 85 South 200 East  
Vernal, UT 84078 \* (435) 789-1017





REV: 1 07-24-23 P.M. (PIPELINE R-O-W CHANGE)

GMT EXPLORATION COMPANY, LLC

INVICTA 3-65 28 PAD  
N 1/2, SECTION 28, T3S, R65W, 6th P.M.  
ADAMS COUNTY, COLORADO

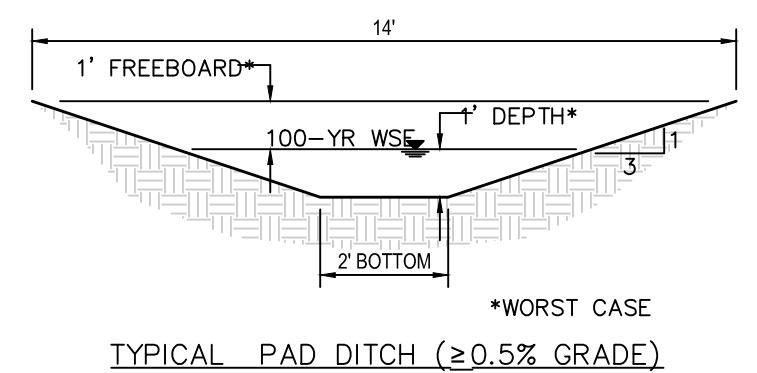
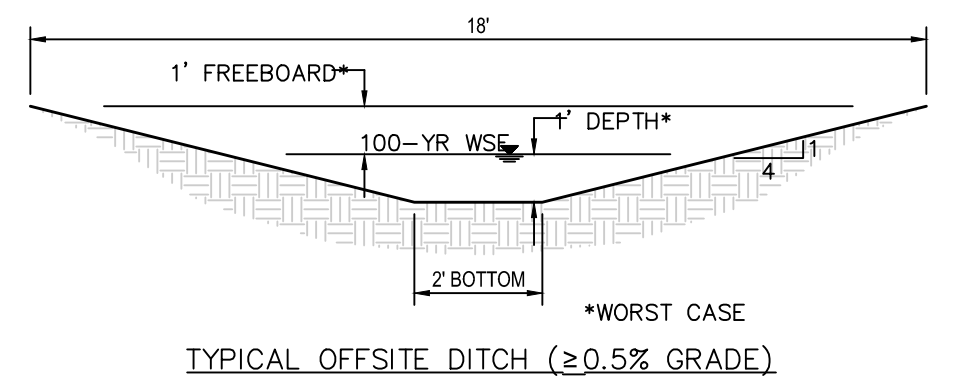
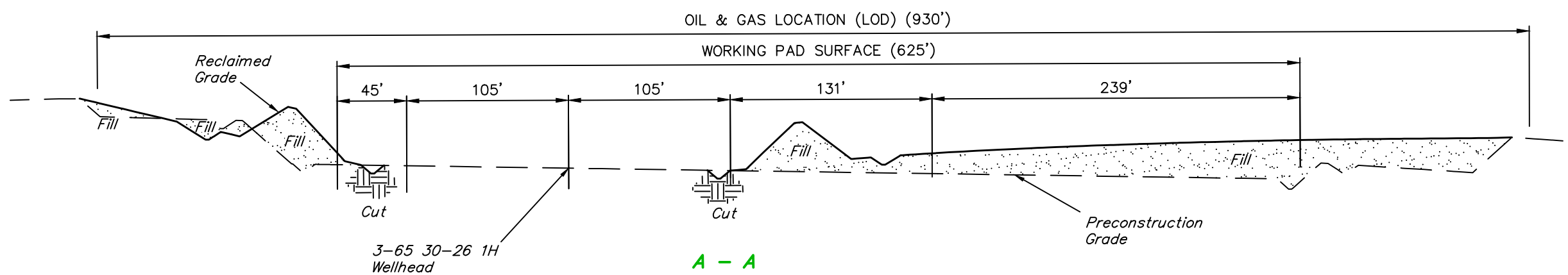
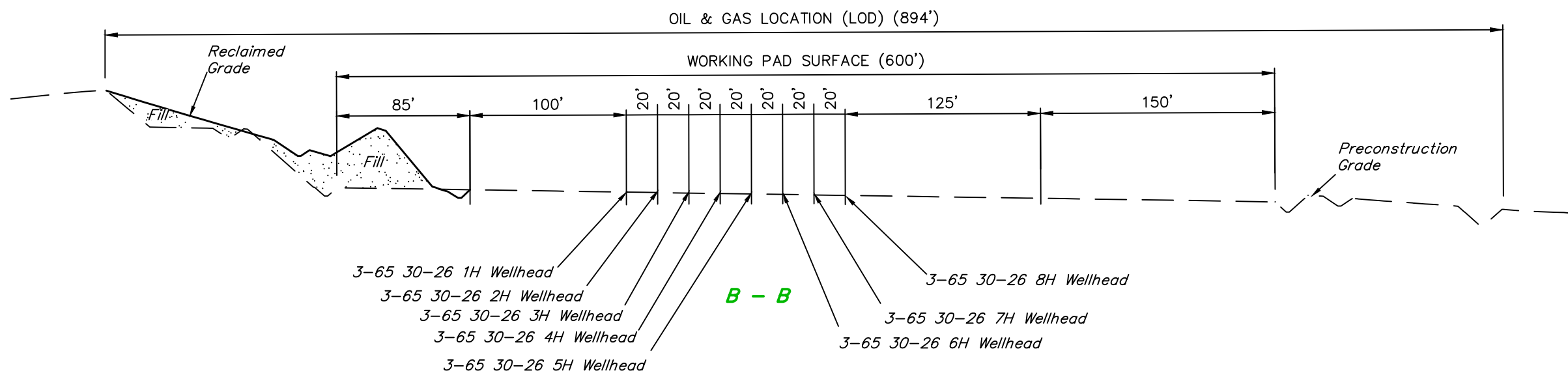
SURVEYED BY	DALLAS NIELSEN	01-26-23	SCALE
DRAWN BY	K.C.	06-29-23	1" = 80'

INTERIM RECLAIM LAYOUT



UELS, LLC  
Corporate Office \* 85 South 200 East  
Vernal, UT 84078 \* (435) 789-1017





APPROXIMATE EARTHWORK QUANTITIES	
(10") TOPSOIL STRIPPING	0 Cu. Yds.
PAD RECLAMATION	2,900 Cu. Yds.
<b>TOTAL CUT</b>	<b>2,900 Cu. Yds.</b>
<b>PAD RECLAIM - FILL</b>	<b>97,180 Cu. Yds.</b>
DEFICIT MATERIAL	94,280 Cu. Yds.
TOPSOIL USED ON RECLAIMED PAD	7,550 Cu. Yds.

GMT EXPLORATION COMPANY, LLC

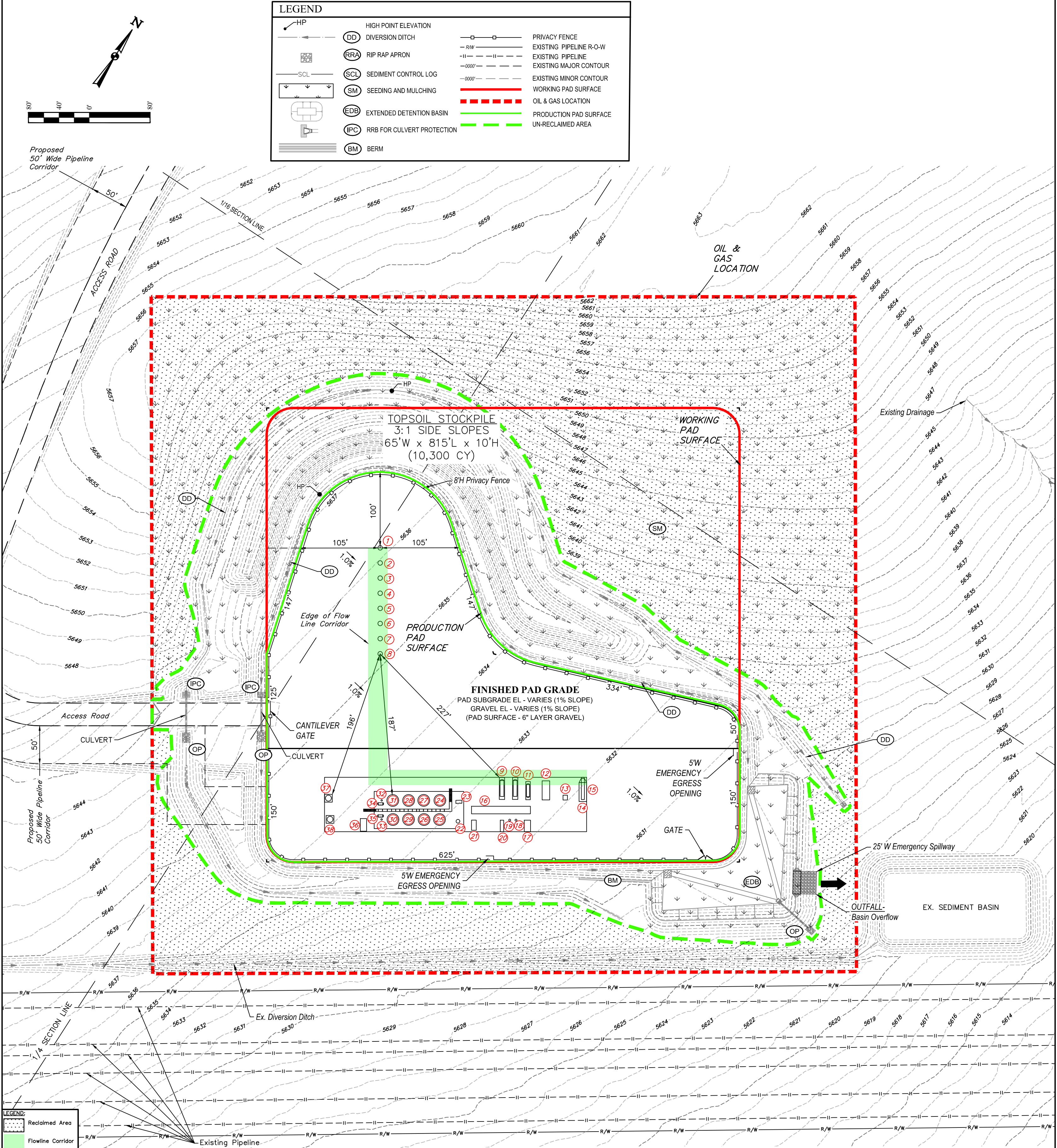
INVICTA 3-65 28 PAD  
N 1/2, SECTION 28, T3S, R65W, 6th P.M.  
ADAMS COUNTY, COLORADO

SURVEYED BY	DALLAS NIELSEN	01-26-23	SCALE
DRAWN BY	K.C.	06-29-23	1" = 80'
INTERIM RECLAMATION - CROSS SECTIONS			



UELS, LLC  
Corporate Office \* 85 South 200 East  
Vernal, UT 84078 \* (435) 789-1017





APPROXIMATE WELL SITE DISTURBANCE AREAS		
	ACRES	
WORKING PAD SURFACE DISTURBANCE	±8.585	
CONSTRUCTION DISTURBANCE	±10.490	
<b>TOTAL OIL &amp; GAS LOCATION</b>	<b>±19.075</b>	
APPROXIMATE SURFACE DISTURBANCE AREAS		
	DISTANCE	ACRES
TOTAL OIL & GAS LOCATION	NA	±19.075
60' WIDE ACCESS ROAD R-O-W DISTURBANCE	±2325'	±3.202
50' WIDE PIPELINE CORRIDOR DISTURBANCE	±2827.68'	±3.246
<b>TOTAL SURFACE USE AREA</b>		<b>±25.523</b>
WORKING PAD SURFACE DISTURBANCE = 8.585 ACRES		
PRODUCTION PAD SURFACE = 4.845 ACRES		
APPROXIMATE UN-RECLAIMED DISTURBANCE = 10.301 ACRES		
APPROXIMATE RECLAIMED DISTURBANCE = 8.774 ACRES		
TOTAL OIL & GAS LOCATION = 19.075 ACRES		

**NOTES:**

- Rounded corners shown at 35' radius.
- Contours shown at 1' intervals.
- Cut/Fill slopes 3:1 (Typ. except where noted).
- Overall Drilling Working Pad Surface = 625' x 600'

EQUIPMENT LIST		EQUIPMENT LIST		EQUIPMENT LIST		EQUIPMENT LIST	
#	DESCRIPTION	#	DESCRIPTION	#	DESCRIPTION	#	DESCRIPTION
①	3-65 30-26 1H WELLHEAD	⑬	TRANSFORMER	⑳	WATER TANK (750 BBL)	⑳	ECD
②	3-65 30-26 2H WELLHEAD	⑭	ELECTRICAL RACK	㉑	OIL TANK (750 BBL)	㉑	ECD
③	3-65 30-26 3H WELLHEAD	⑮	GENERATOR	㉒	OIL TANK (750 BBL)		
④	3-65 30-26 4H WELLHEAD	⑯	INLET MANIFOLD SKID	㉓	OIL TANK (750 BBL)		
⑤	3-65 30-26 5H WELLHEAD	⑰	SALES GAS METER	㉔	OIL TANK (750 BBL)		
⑥	3-65 30-26 6H WELLHEAD	⑱	SALES GAS SCRUBBER	㉕	OIL TANK (750 BBL)		
⑦	3-65 30-26 7H WELLHEAD	㉀	FUEL GAS SCRUBBER	㉖	OIL TANK (750 BBL)		
⑧	3-65 30-26 8H WELLHEAD	㉁	INSTRUMENT AIR SKID	㉗	HP ECD KNOCKOUT PUMP		
⑨	BULK OIL TREATER	㉂	VRU GAS COMPRESSOR	㉘	LP ECD KNOCKOUT PUMP		
⑩	BULK OIL SEPARATOR	㉃	VAPOR RECOVERY TOWER	㉙	HP ECD KNOCKOUT DRUM		
⑪	TEST SEPARATOR	㉄	RECYCLE PUMP	㉚	LP ECD KNOCKOUT DRUM		
⑫	GAS LIFT COMPRESSOR	㉅	WATER TANK (750 BBL)	㉛	OIL LACT SKID		