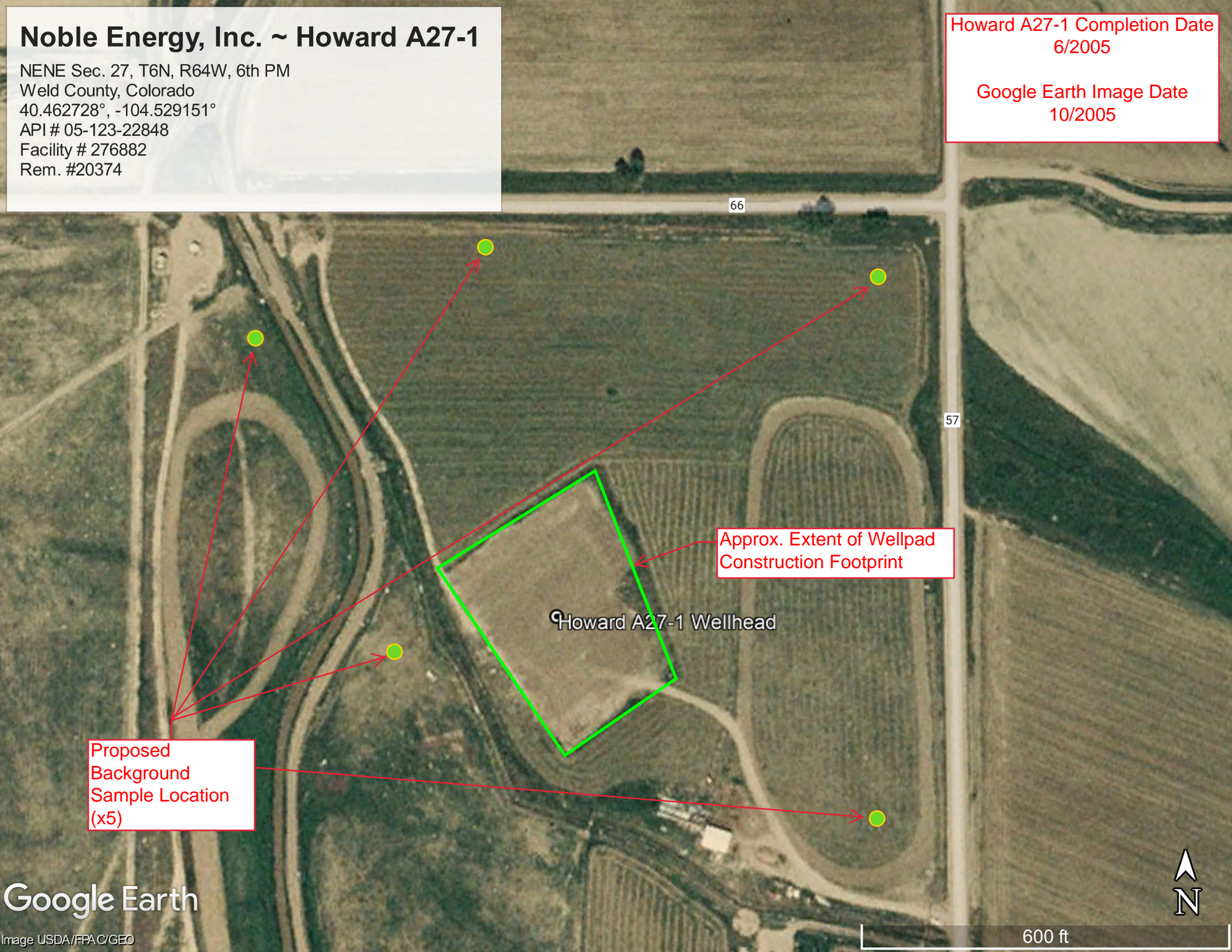


# Noble Energy, Inc. ~ Howard A27-1

NENE Sec. 27, T6N, R64W, 6th PM  
Weld County, Colorado  
40.462728°, -104.529151°  
API # 05-123-22848  
Facility # 276882  
Rem. #20374

Howard A27-1 Completion Date  
6/2005

Google Earth Image Date  
10/2005



Approx. Extent of Wellpad  
Construction Footprint

Howard A27-1 Wellhead

Proposed  
Background  
Sample Location  
(x5)