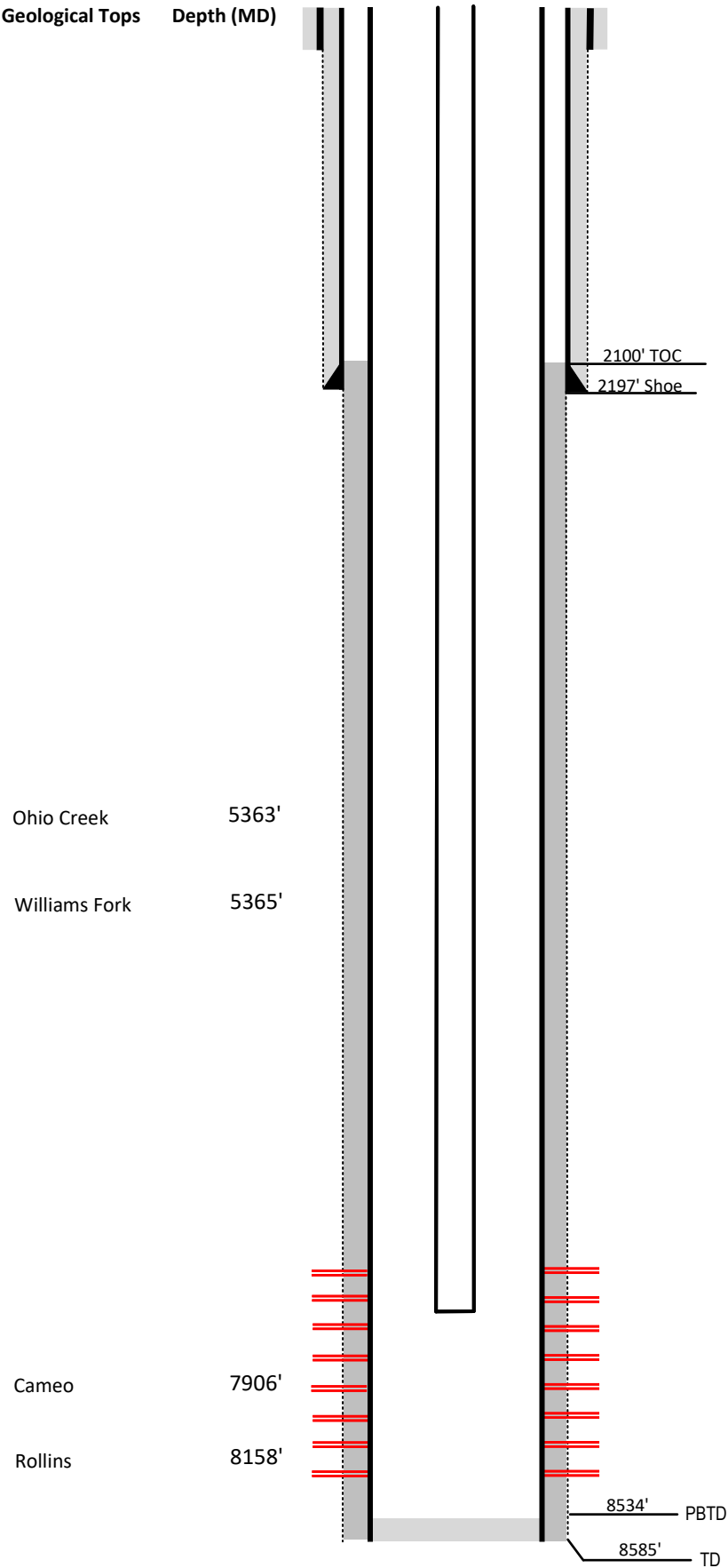


Laramie Energy

Current Wellbore Diagram
Not to scale

FEDERAL WELL: YES ☐ NO ☒



Well Name	NVega # 23-421
API	05-077-09517-00
Surface Location	NWNW Sec 24 T9S R93W
GPS Coordinates	39.266064, -107.726719
County, State	Mesa County, Co
Diagram Date	4/23/2024

Hole	24" @ 60'
Conductor	16" @ 60'
Cement	Surface

Surface Hole	11" @ 2197'
Casing	8 5/8" 32# J-55 @ 2197'
Cement	430 sks
TOC	Surface

Production Hole	7.875" @ 8575'
Casing	4 1/2" 11.6# I-80 @ 8575'
Cement	835 sks
TOC	2100'

Tubing	2 3/8" I-80 EUE @ 7228'
--------	-------------------------

Perforations	Top	Bottom
	6474'	8216'