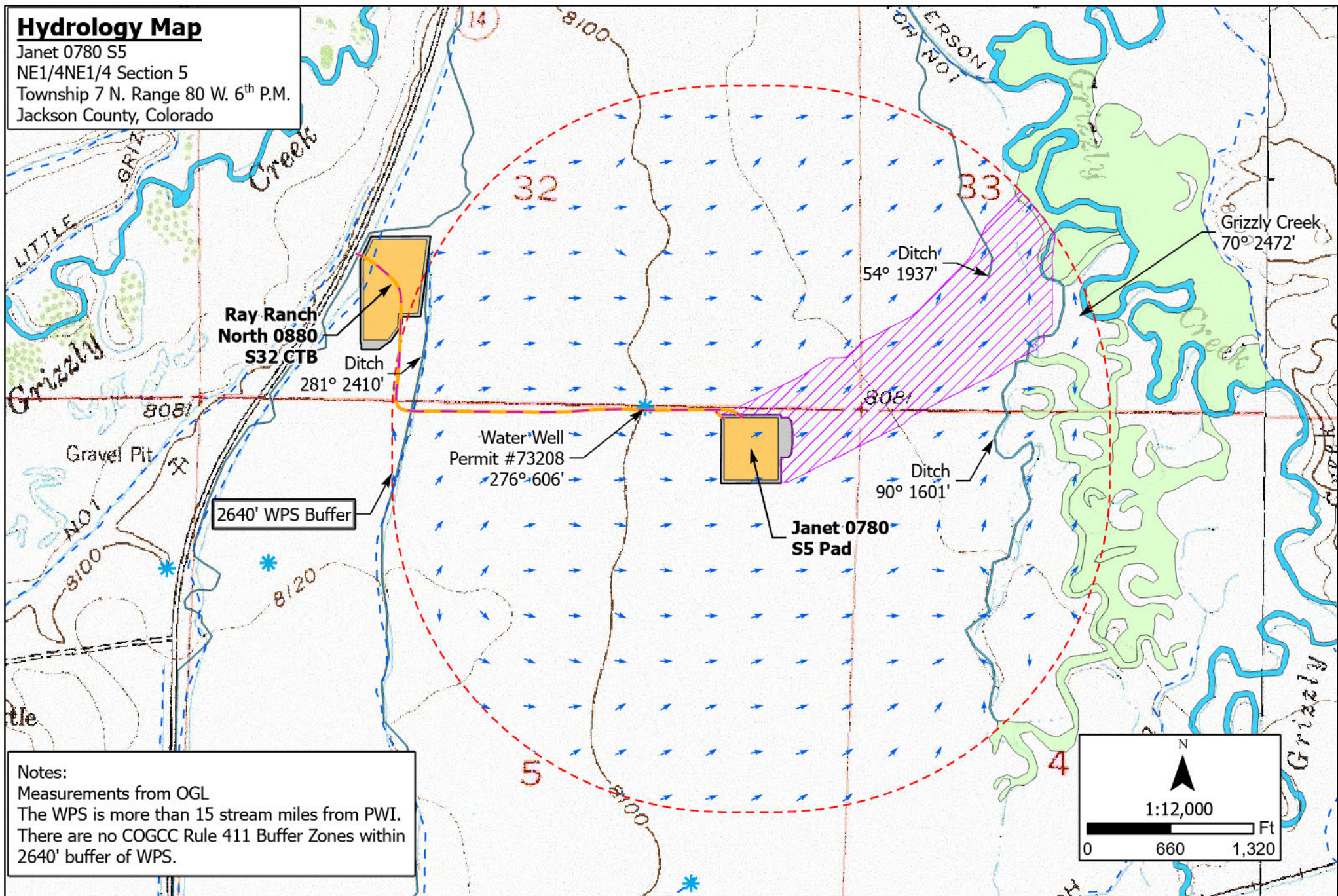
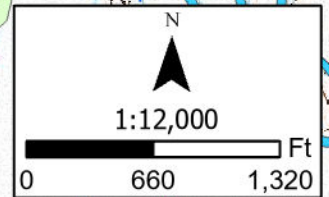


Hydrology Map

Janet 0780 S5
NE1/4NE1/4 Section 5
Township 7 N. Range 80 W. 6th P.M.
Jackson County, Colorado



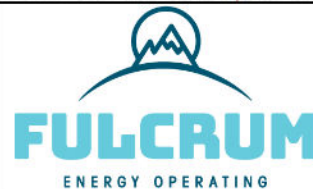
Notes:
Measurements from OGL
The WPS is more than 15 stream miles from PWI.
There are no COGCC Rule 411 Buffer Zones within 2640' buffer of WPS.



- WPS
- OGL
- Water Wells
- Janet 0780 S5 Access

- U.S. FWS National Wetlands Inventory
- Freshwater Emergent Wetland
- Riverine

- Surface Flow Direction (Determined from NED 10M)
- Down Gradient Area (Determined from NED 10M)



NORTH PARK ENGINEERING & CONSULTING, INC.

P.O. BOX 395
WALDEN, CO 80480
(970) 723-3725

DRAWING COMPLETION: 8/21/2023

SURVEYED BY: CJU

DRAWN BY: ADL

CHECKED BY: RRM