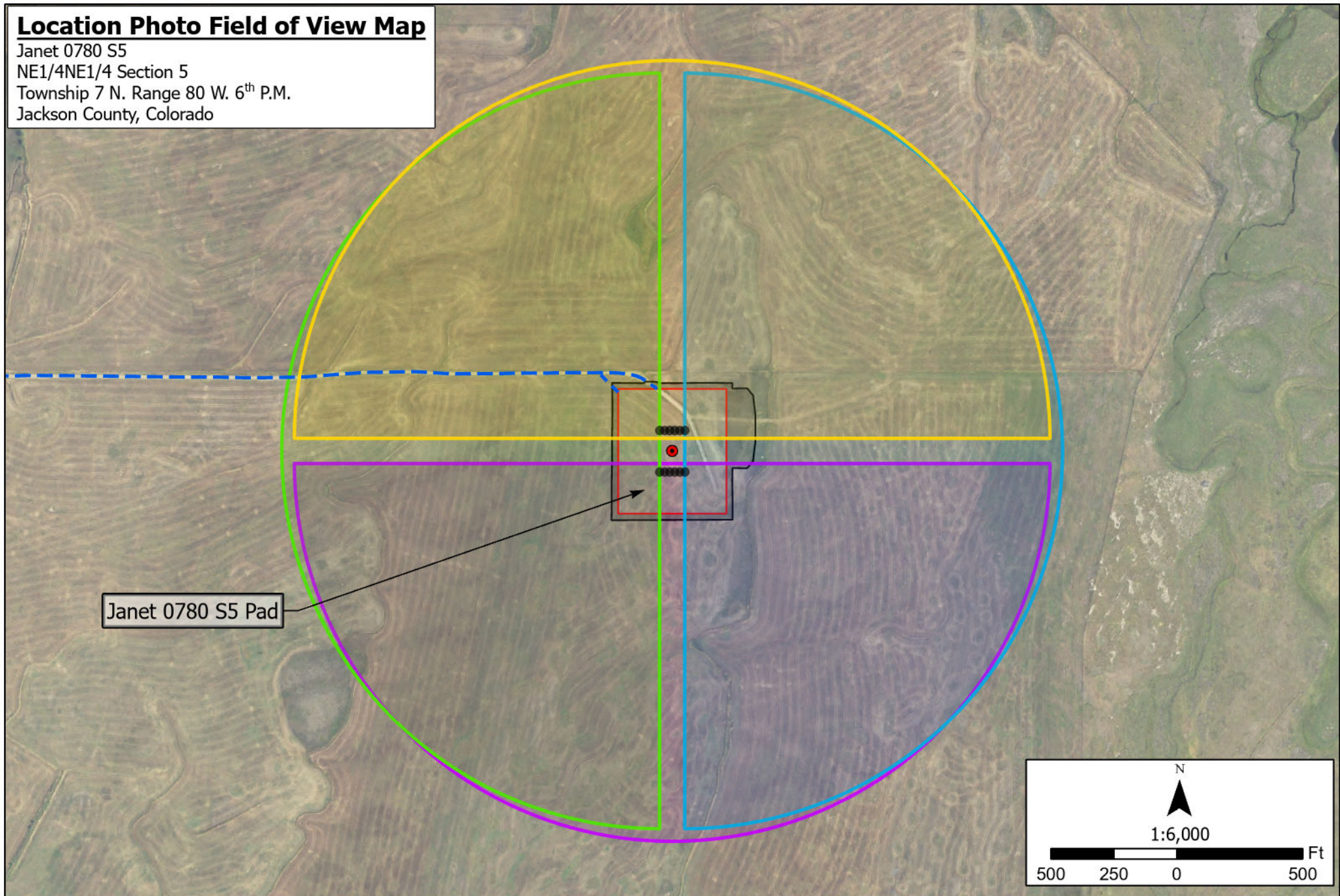
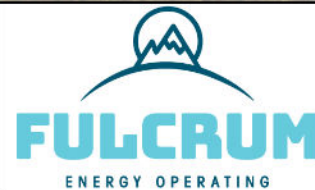


# Location Photo Field of View Map

Janet 0780 S5  
NE1/4NE1/4 Section 5  
Township 7 N. Range 80 W. 6<sup>th</sup> P.M.  
Jackson County, Colorado



- |  |                     |  |                        |  |                      |
|--|---------------------|--|------------------------|--|----------------------|
|  | North Field of View |  | Standing Point         |  | Existing Access Road |
|  | East Field of View  |  | Well Surface Locations |  |                      |
|  | South Field of View |  | Working Pad Surface    |  |                      |
|  | West Field of View  |  | Oil and Gas Location   |  |                      |



**NORTH PARK ENGINEERING & CONSULTING, INC.**

P.O. BOX 395  
WALDEN, CO 80480  
(970) 723-3725

DRAWING COMPLETION: 9/16/2023

SURVEYED BY: CJU

DRAWN BY: ADL

CHECKED BY: RRM





JANET 0780 S5 PAD  
NE1/4NE1/4 SEC 5, T7N, R80W  
LOOKING NORTH July 11, 2022



JANET 0780 S5 PAD  
NE1/4NE1/4 SEC 5, T7N, R80W  
LOOKING EAST July 11, 2022





JANET 0780 S5 PAD  
NE1/4NE1/4 SEC 5, T7N, R80W  
LOOKING SOUTH July 11, 2022



JANET 0780 S5 PAD  
NE1/4NE1/4 SEC 5, T7N, R80W  
LOOKING WEST July 11, 2022