

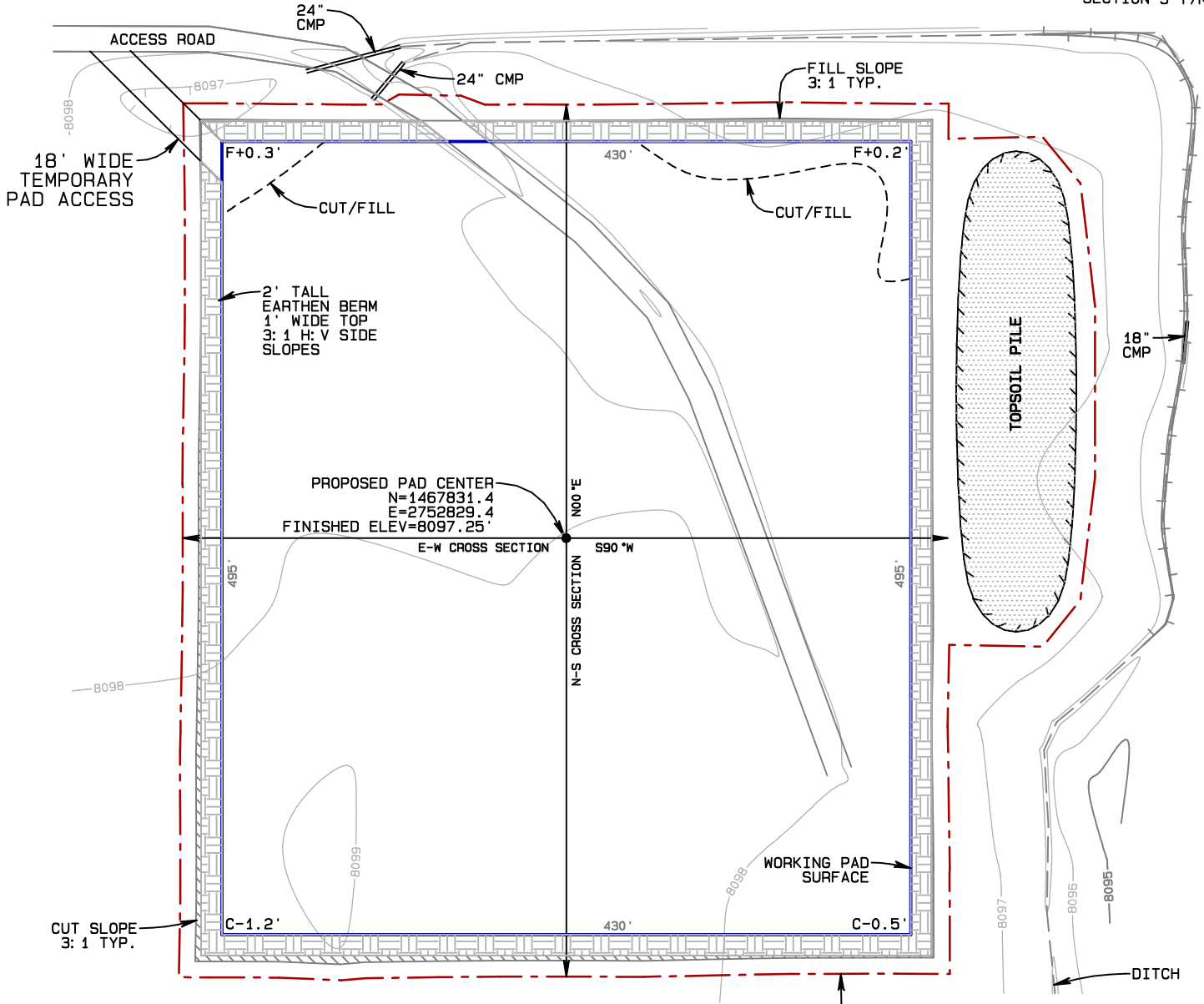
CONSTRUCTION LAYOUT

DATED: 9/30/2023

Janet 0780 S5 Pad
NE1/4NE1/4 of Section 5, T7N, R80W, 6th P.M.,
Jackson County, Colorado.

SECTION 32 T8N

SECTION 5 T7N



PAD AFTER CONSTRUCTION

Working Pad Surface = 4.89 acres
Oil & Gas Location = 6.61 acres
(total area of disturbance)
Access Road disturbance = 1.32 acres
Pipeline and/or Utility Corridor
disturbance = 3.02 acres

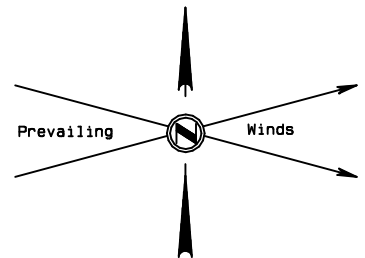
PAD AFTER INTERIM RECLAMATION

Working Pad Surface = 3.11 acres
Oil & Gas Location = 4.39 acres
(total area of disturbance)
Access Road disturbance = 1.28 acres
Pipeline and/or Utility Corridor
disturbance = 3.02 acres

Estimated Earthwork:
Total Excavation - 6,504.2 Cu. Yd.
Pad Fill/Borrow - 54.4 Cu. Yd.
Topsoil Stockpile - 4,630 Cu. Yd.
Berm Stockpile - 1,819.8 Cu. Yd.
Final Pad Elevation = 8097.25'

BASIS OF ELEVATION

NAVD88 Computed using GEOID12B as measured
using a combination of Static and Kinematic GPS
based on an OPUS Solution Report.



GRAPHIC SCALE 1"=100'

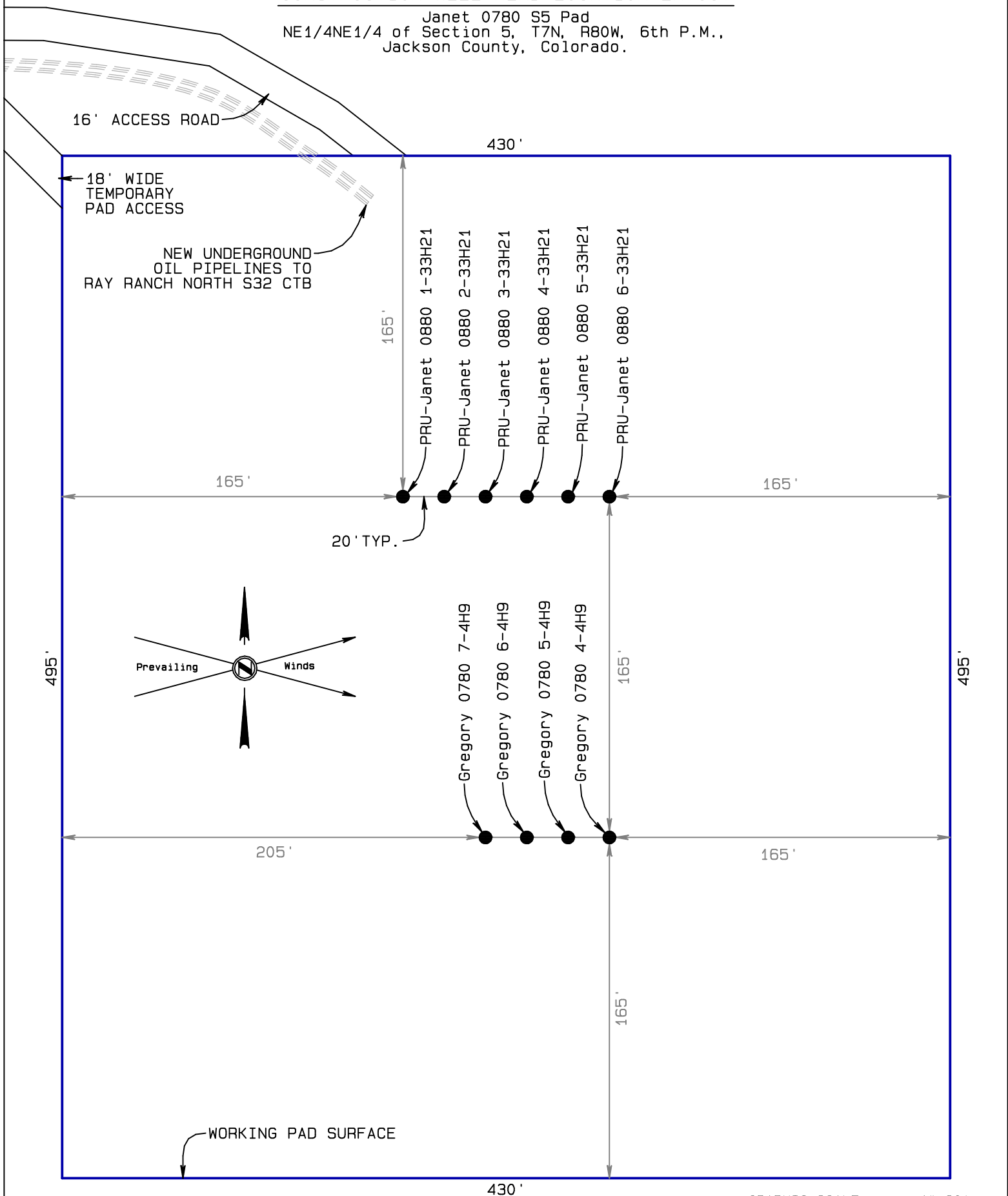


NORTH PARK ENGINEERING & CONSULTING, INC.
PO Box 395 Walden, CO 80480 970-723-3725

CONSTRUCTION WELL HEAD LOCATION LAYOUT

DATED: 9/30/2023

Janet 0780 S5 Pad
NE1/4NE1/4 of Section 5, T7N, R80W, 6th P.M.,
Jackson County, Colorado.



Final Pad Elevation = 8097.25'
All Elev. for Surface Locations
at Ungraded Ground are 8098'

GRAPHIC SCALE

1"=60'



NORTH PARK ENGINEERING & CONSULTING, INC.
PO Box 395 Walden, CO 80480 970-723-3725

CONSTRUCTION LAYOUT CROSS SECTION

DATED: 9/30/2023

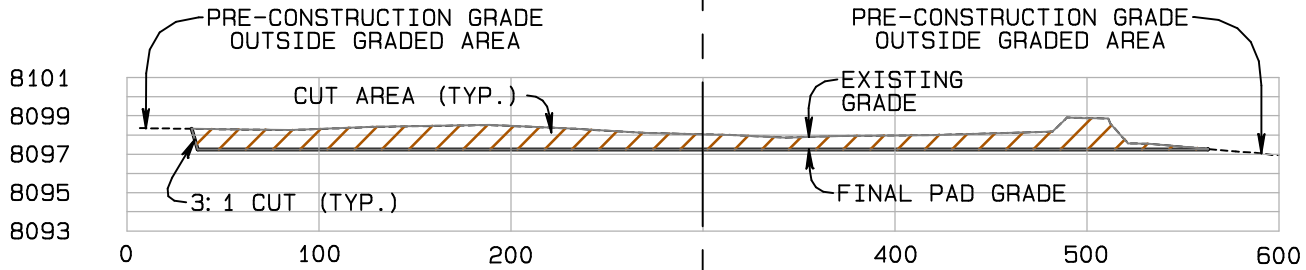
PAD AFTER CONSTRUCTION

Working Pad Surface = 4.89 acres
Oil & Gas Location = 6.61 acres
(total area of disturbance)
Access Road disturbance = 1.32 acres
Pipeline and/or Utility Corridor
disturbance = 3.02 acres

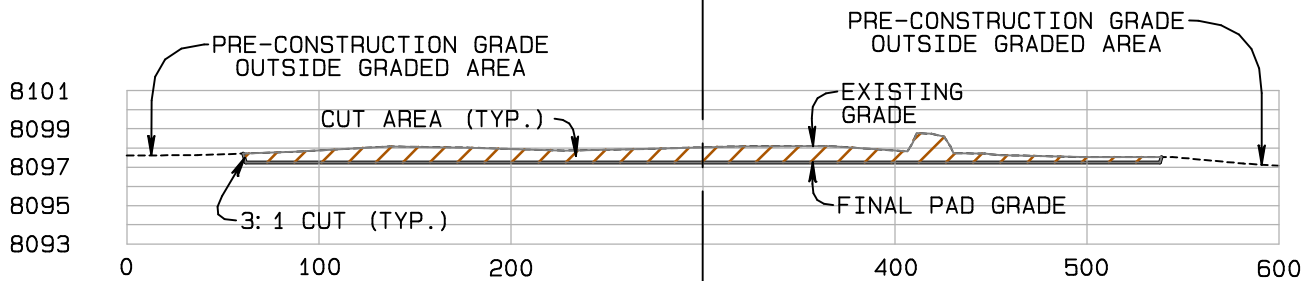
Janet 0780 S5 Pad
NE1/4NE1/4 of Section 5, T7N, R80W, 6th P.M.,
Jackson County, Colorado.

PAD AFTER INTERIM RECLAMATION

Working Pad Surface = 3.11 acres
Oil & Gas Location = 4.39 acres
(total area of disturbance)
Access Road disturbance = 1.28 acres
Pipeline and/or Utility Corridor
disturbance = 3.02 acres



N-S CROSS SECTION - SCALE 1"=100'
WORKING PAD SURFACE 0+86 TO 5+81



E-W CROSS SECTION - SCALE 1"=100'
WORKING PAD SURFACE 0+52 TO 4+82

CL DRILL PAD

Final Pad Elevation = 8097.25'

BASIS OF ELEVATION

NAVD88 Computed using GEOID12B as measured
using a combination of Static and Kinematic GPS
based on an OPUS Solution Report.

Vertical Exaggeration = 10 Times

GRAPHIC SCALE 1"=100'

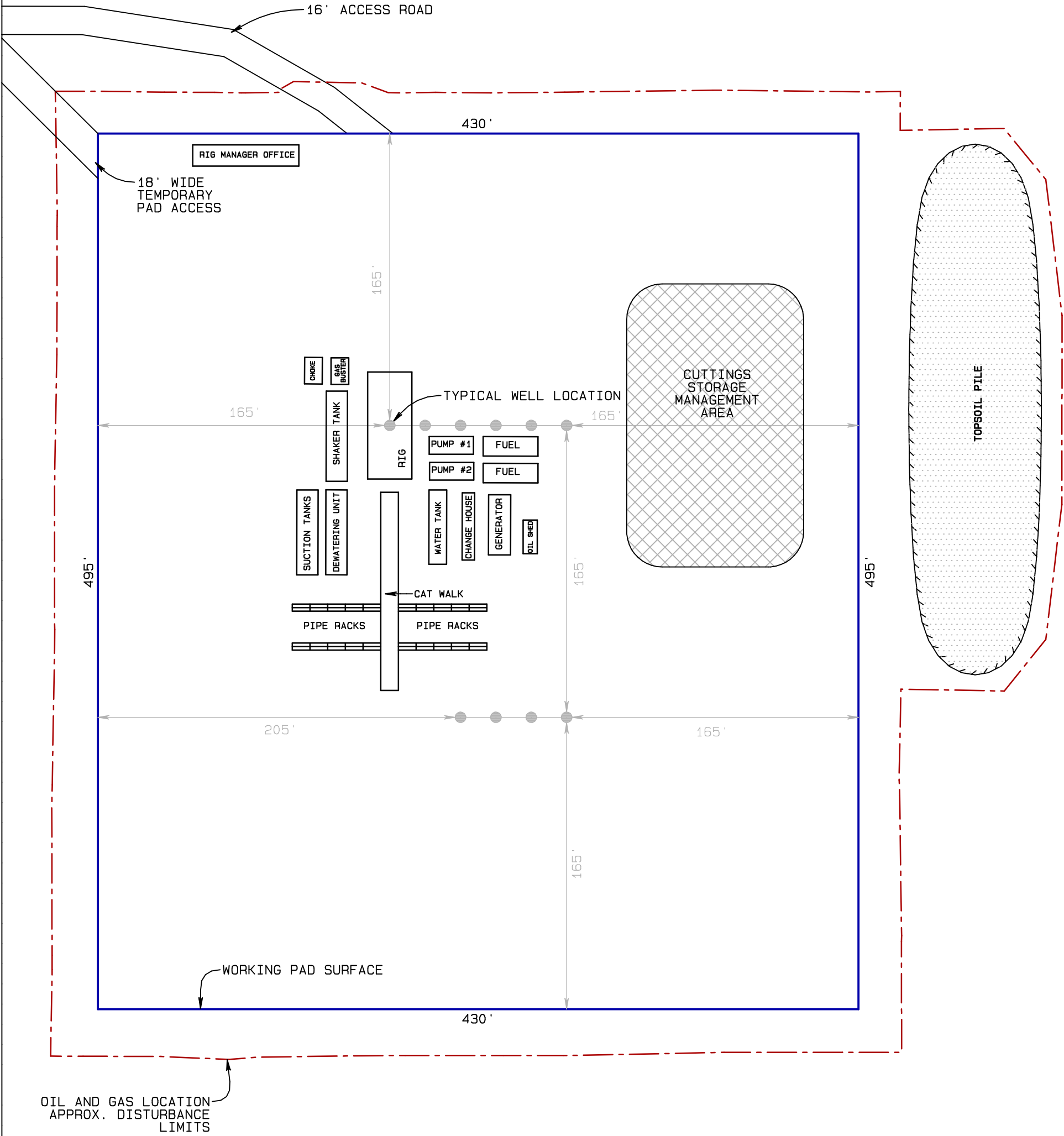


NORTH PARK ENGINEERING & CONSULTING, INC.
PO Box 395 Walden, CO 80480 970-723-3725

DATED: 10/2/2023

PRELIMINARY DRILL RIG LAYOUT

Janet 0780 S5 Pad
NE1/4NE1/4 of Section 5, T7N, R80W, 6th P.M.,
Jackson County, Colorado.



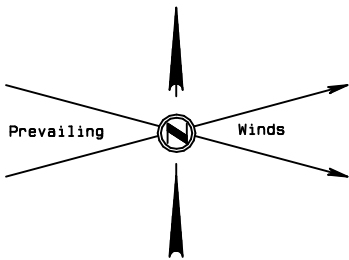
PAD AFTER CONSTRUCTION

Working Pad Surface = 4.89 acres
Oil & Gas Location = 6.61 acres
(total area of disturbance)
Access Road disturbance = 1.32 acres
Pipeline and/or Utility Corridor
disturbance = 3.02 acres

PAD AFTER INTERIM RECLAMATION

Working Pad Surface = 3.11 acres
Oil & Gas Location = 4.39 acres
(total area of disturbance)
Access Road disturbance = 1.28 acres
Pipeline and/or Utility Corridor
disturbance = 3.02 acres

Final Pad Elevation = 8097.25'



GRAPHIC SCALE 1"=60'

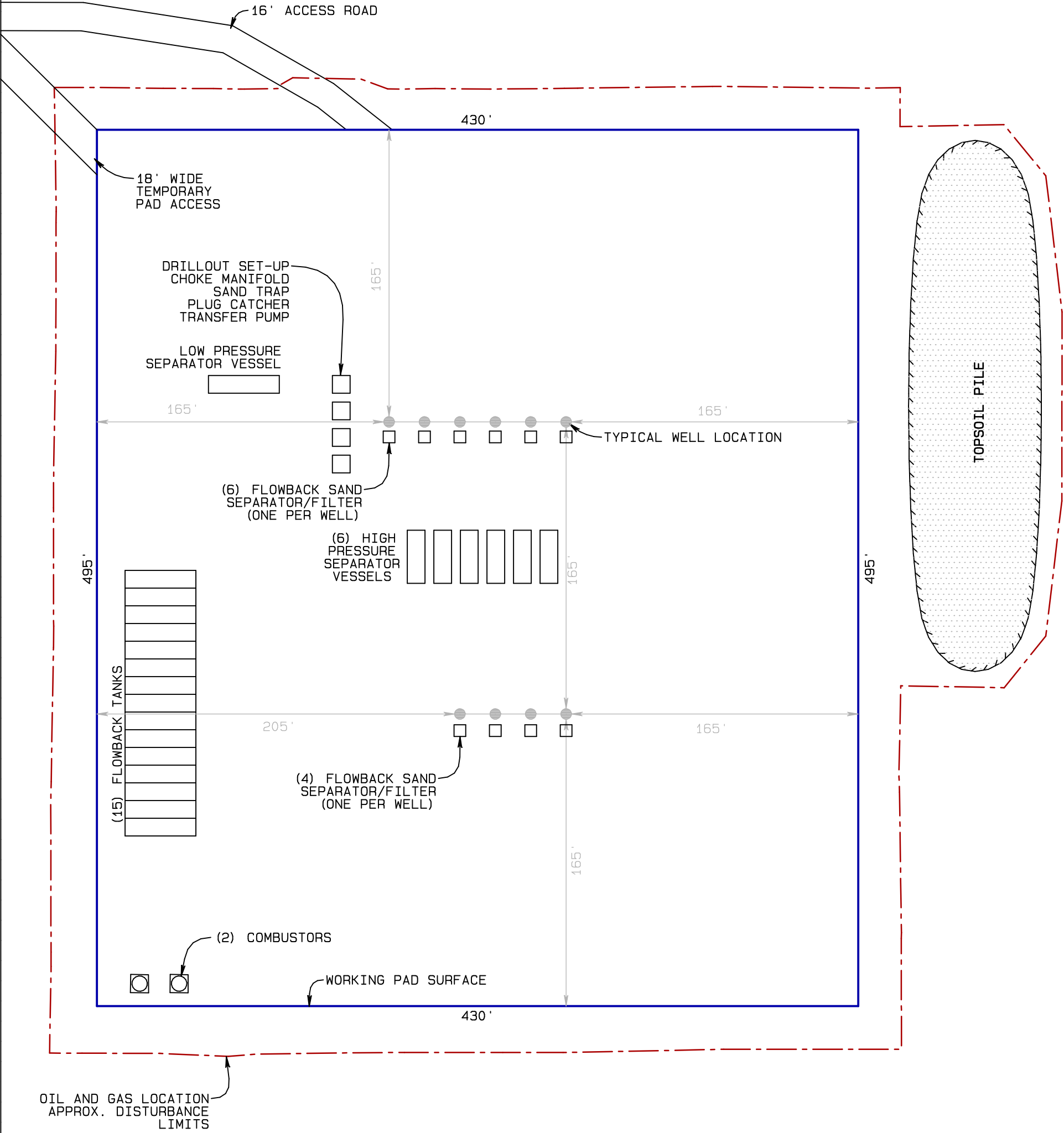


NORTH PARK ENGINEERING & CONSULTING, INC.
PO Box 395 Walden, CO 80480 970-723-3725

DATED: 12/7/2023

PRELIMINARY FLOWBACK EQUIPMENT LAYOUT

Janet 0780 S5 Pad
NE1/4NE1/4 of Section 5, T7N, R80W, 6th P.M.,
Jackson County, Colorado.



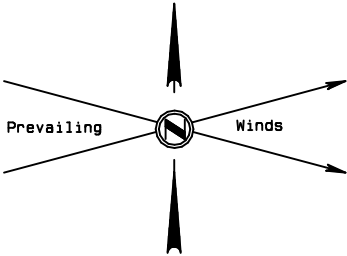
PAD AFTER CONSTRUCTION

Working Pad Surface = 4.89 acres
Oil & Gas Location = 6.61 acres
(total area of disturbance)
Access Road disturbance = 1.32 acres
Pipeline and/or Utility Corridor
disturbance = 3.02 acres

PAD AFTER INTERIM RECLAMATION

Working Pad Surface = 3.11 acres
Oil & Gas Location = 4.39 acres
(total area of disturbance)
Access Road disturbance = 1.28 acres
Pipeline and/or Utility Corridor
disturbance = 3.02 acres

Final Pad Elevation = 8097.25'



GRAPHIC SCALE 1"=60'

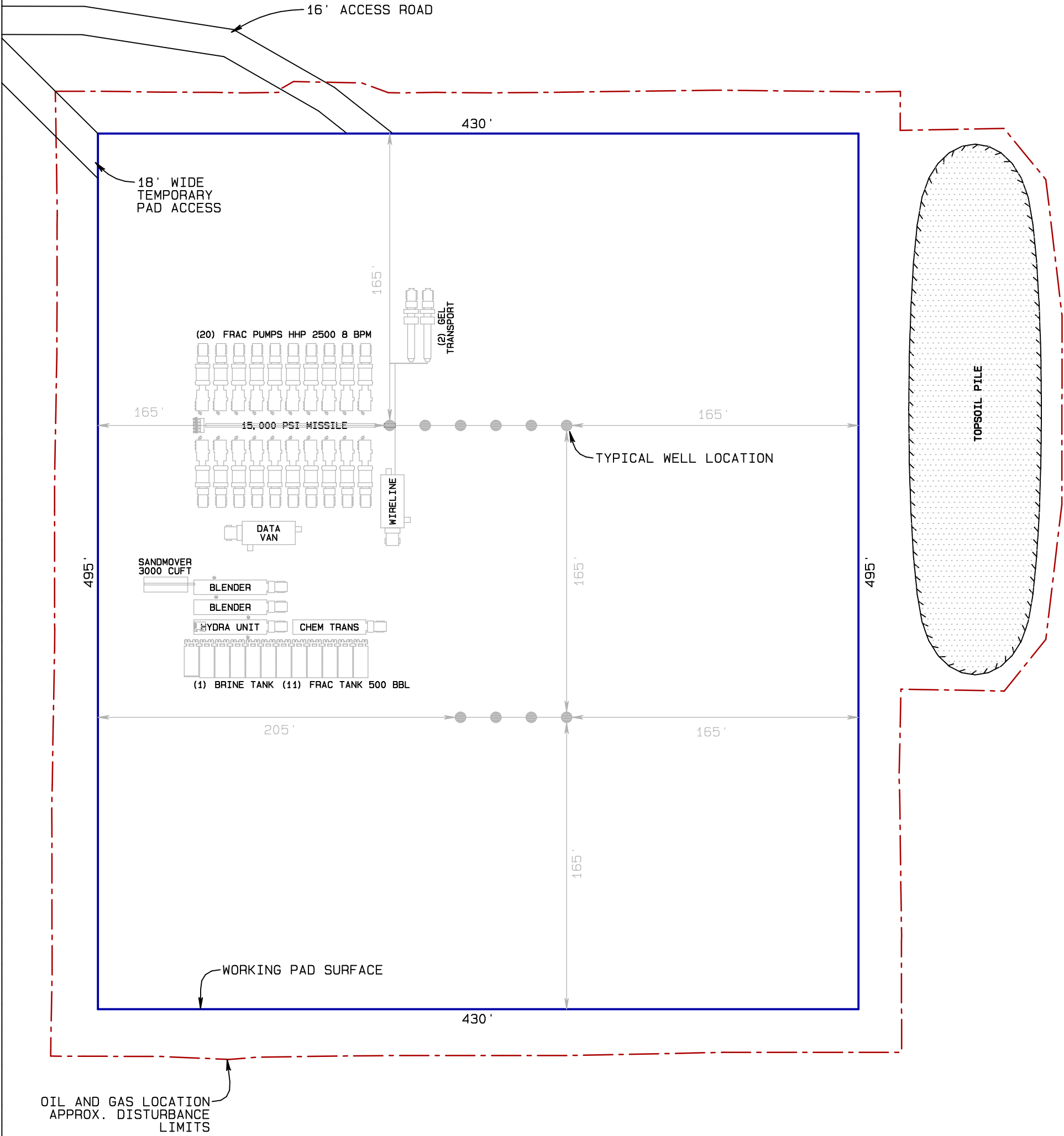


NORTH PARK ENGINEERING & CONSULTING, INC.
PO Box 395 Walden, CO 80480 970-723-3725

DATED: 10/2/2023

PRELIMINARY WELL COMPLETION AND STIMULATION LAYOUT

Janet 0780 S5 Pad
NE1/4NE1/4 of Section 5, T7N, R80W, 6th P.M.,
Jackson County, Colorado.



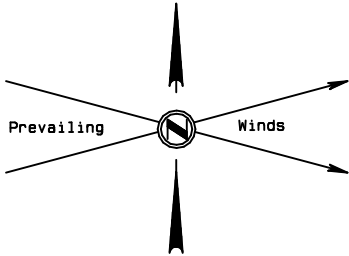
PAD AFTER CONSTRUCTION

Working Pad Surface = 4.89 acres
Oil & Gas Location = 6.61 acres
(total area of disturbance)
Access Road disturbance = 1.32 acres
Pipeline and/or Utility Corridor
disturbance = 3.02 acres

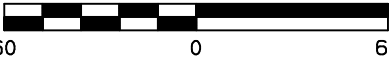
PAD AFTER INTERIM RECLAMATION

Working Pad Surface = 3.11 acres
Oil & Gas Location = 4.39 acres
(total area of disturbance)
Access Road disturbance = 1.28 acres
Pipeline and/or Utility Corridor
disturbance = 3.02 acres

Final Pad Elevation = 8097.25'



GRAPHIC SCALE 1"=60'

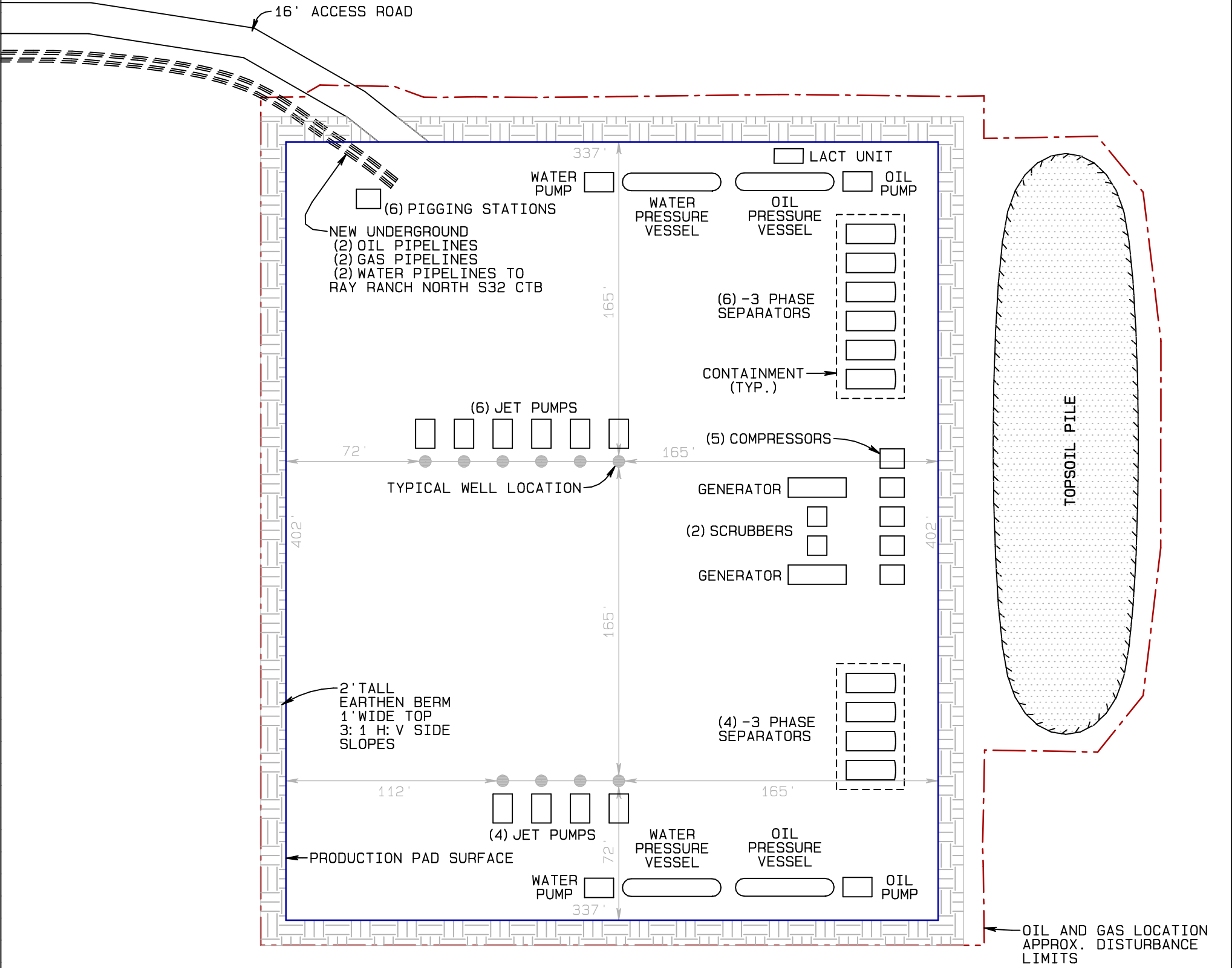


NORTH PARK ENGINEERING & CONSULTING, INC.
PO Box 395 Walden, CO 80480 970-723-3725

DATED: 12/7/2023

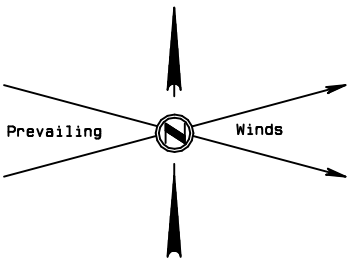
FACILITIES LAYOUT

Janet 0780 S5 Pad
NE1/4NE1/4 of Section 5, T7N, R80W, 6th P.M.,
Jackson County, Colorado.



PAD AFTER INTERIM RECLAMATION
Working Pad Surface = 3.11 acres
(Production Pad Surface)
Oil & Gas Location = 4.39 acres
(total area of disturbance)
Access Road disturbance = 1.28 acres
Pipeline and/or Utility Corridor
disturbance = 3.02 acres

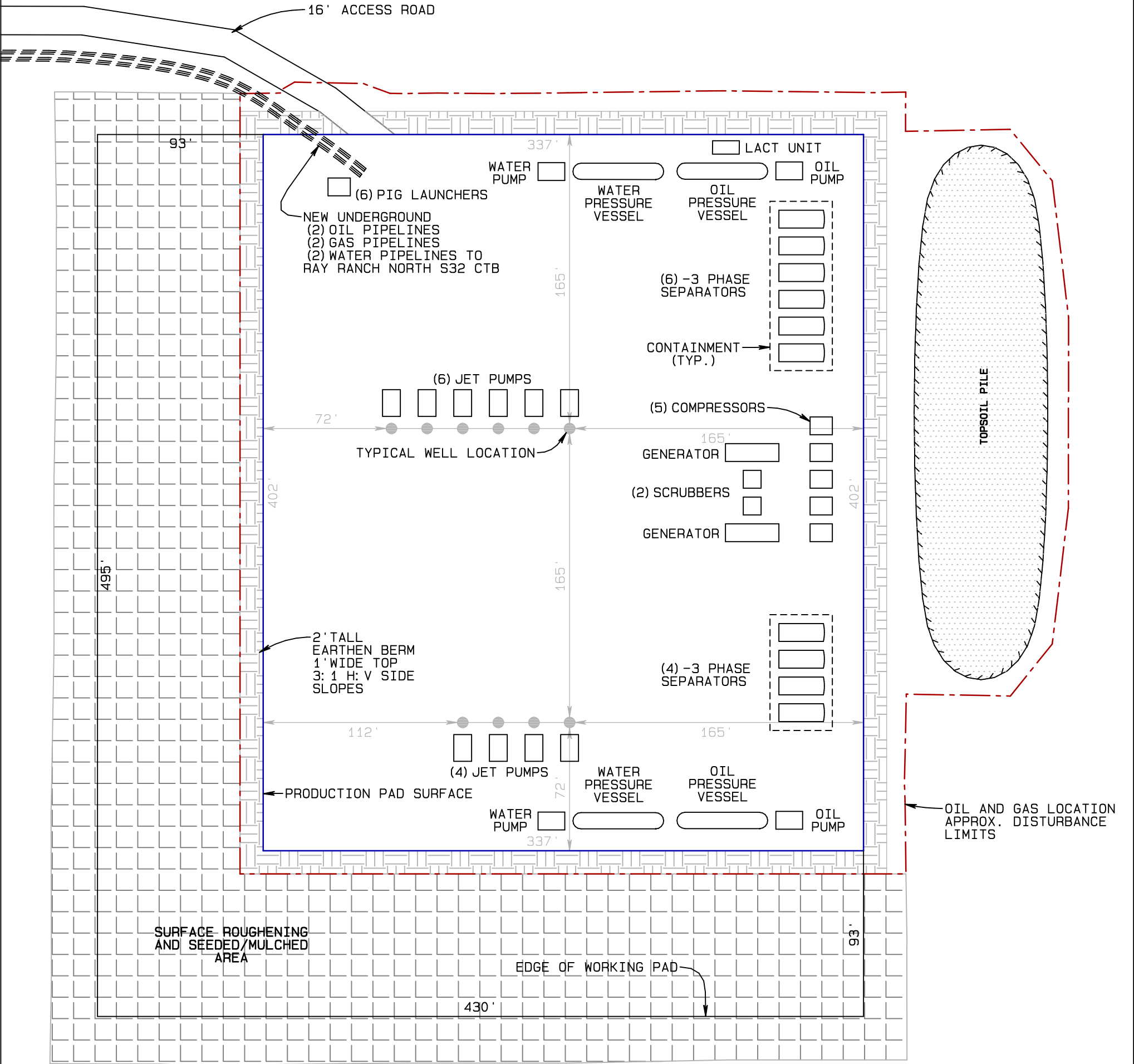
Final Pad Elevation = 8097.25'



GRAPHIC SCALE 1"=60'



NORTH PARK ENGINEERING & CONSULTING, INC.
PO Box 395 Walden, CO 80480 970-723-3725



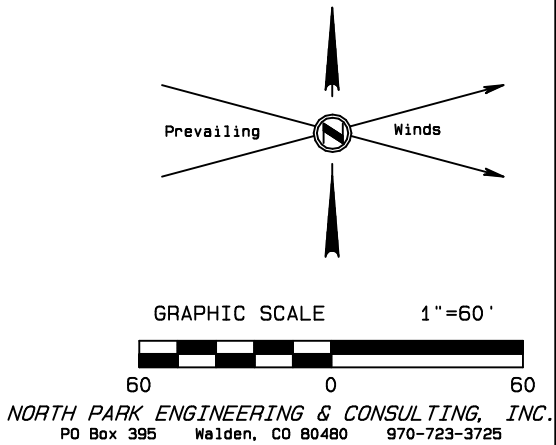
PAD AFTER CONSTRUCTION

Working Pad Surface = 4.89 acres
Oil & Gas Location = 6.61 acres
(total area of disturbance)
Access Road disturbance = 1.32 acres
Pipeline and/or Utility Corridor
disturbance = 3.02 acres

PAD AFTER INTERIM RECLAMATION

Working Pad Surface = 3.11 acres
(Production Pad Surface)
Oil & Gas Location = 4.39 acres
(total area of disturbance)
Access Road disturbance = 1.28 acres
Pipeline and/or Utility Corridor
disturbance = 3.02 acres

Final Pad Elevation = 8097.25'



DATED: 10/2/2023

INTERM RECLAIM LAYOUT CROSS SECTION

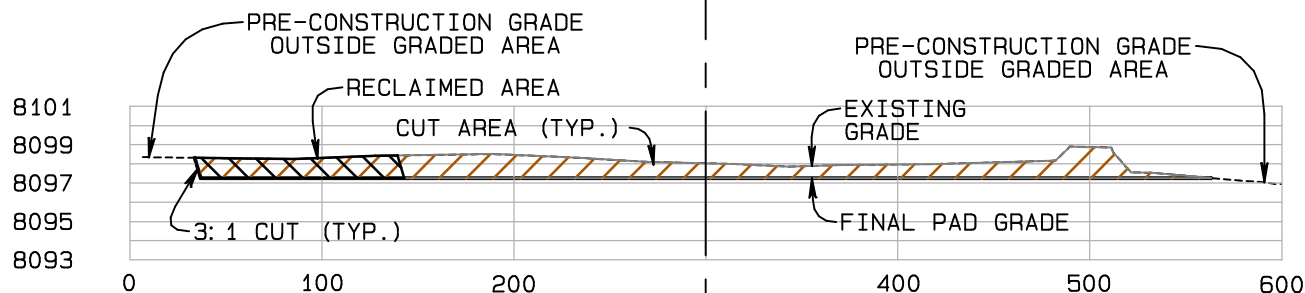
Janet 0780 S5 Pad
NE1/4NE1/4 of Section 5, T7N, R80W, 6th P.M.,
Jackson County, Colorado.

PAD AFTER CONSTRUCTION

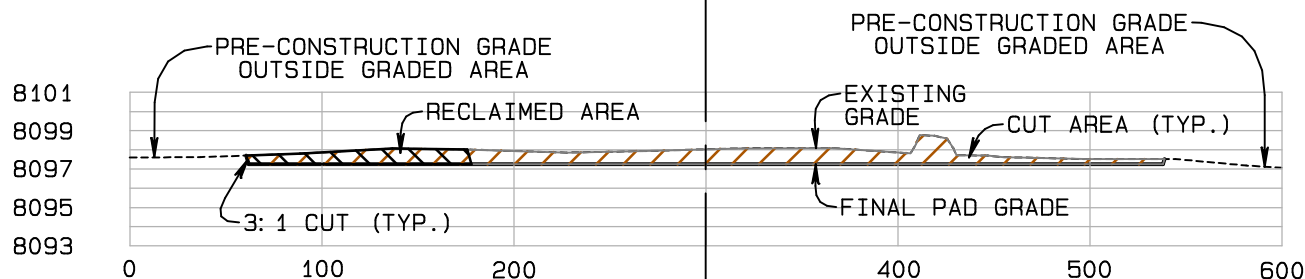
Working Pad Surface = 4.89 acres
Oil & Gas Location = 6.61 acres
(total area of disturbance)
Access Road disturbance = 1.32 acres
Pipeline and/or Utility Corridor
disturbance = 3.02 acres

PAD AFTER INTERIM RECLAMATION

Working Pad Surface = 3.11 acres
Oil & Gas Location = 4.39 acres
(total area of disturbance)
Access Road disturbance = 1.28 acres
Pipeline and/or Utility Corridor
disturbance = 3.02 acres



N-S CROSS SECTION - SCALE 1"=100'
PRODUCTION PAD SURFACE 0+86 TO 4+88



E-W CROSS SECTION - SCALE 1"=100'
PRODUCTION PAD SURFACE 1+07 TO 4+44

CL DRILL PAD

Final Pad Elevation = 8097.25'

BASIS OF ELEVATION

NAVD88 Computed using GEOID12B as measured
using a combination of Static and Kinematic GPS
based on an OPUS Solution Report.

Vertical Exaggeration = 10 Times

GRAPHIC SCALE 1"=100'

