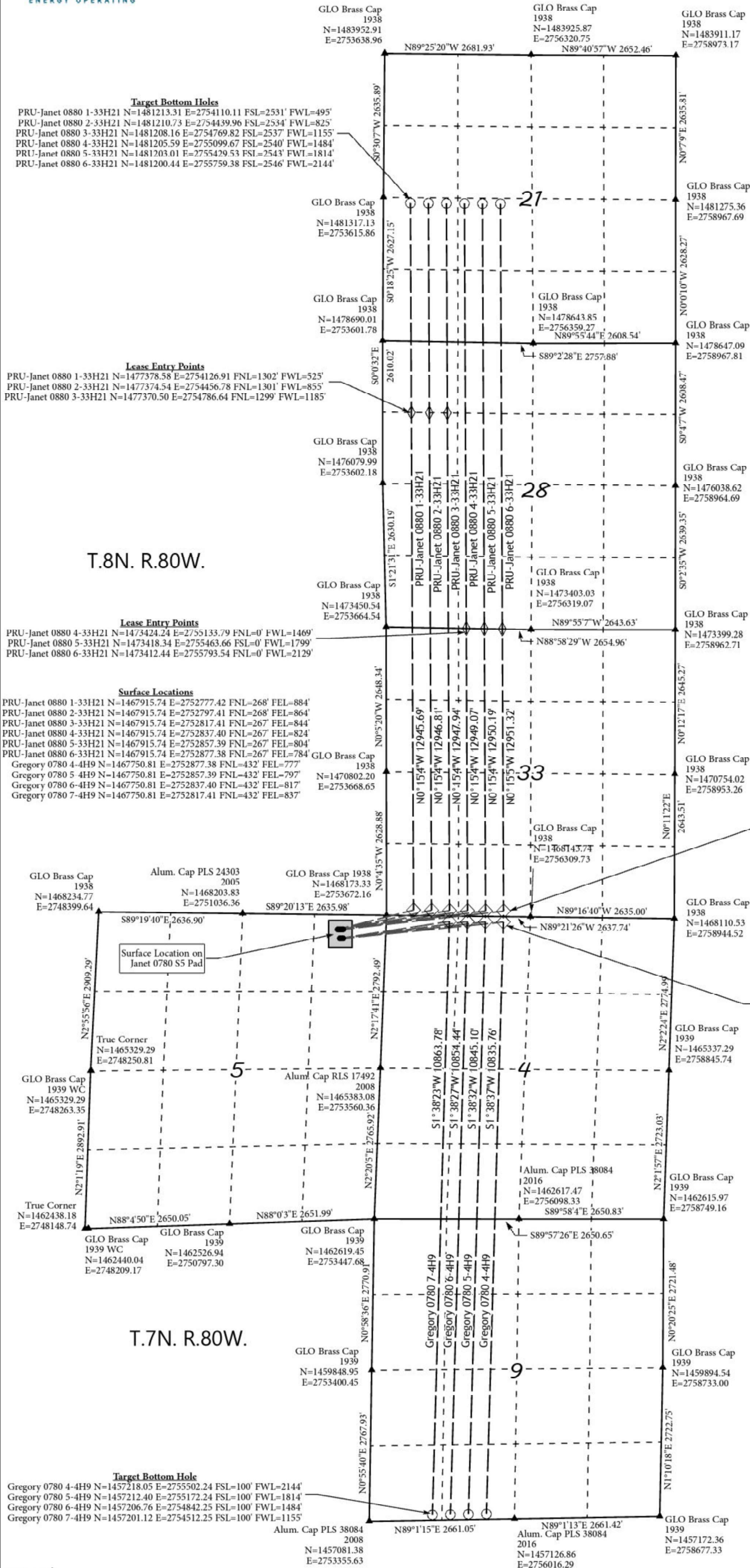


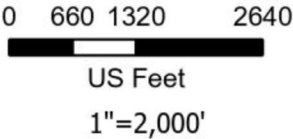


Directional Well Plat

Janet 0780 S5 Pad
As shown in Sections 4, 5, 9, T7N, R80W, 6th P.M. &
Sections 21, 28, 33, T8N, R8W, 6th P.M
Jackson County, Colorado
Sheet 1 of 2



- Legend
- Surface Location
 - ◇ Lease Entry Point
 - Target Bottom Hole
 - ◇ Top of Productive Zone
 - ▲ Found Corners



NORTH PARK ENGINEERING & CONSULTING, INC.

P.O. BOX 395
WALDEN, CO 80480
(970) 723-3725

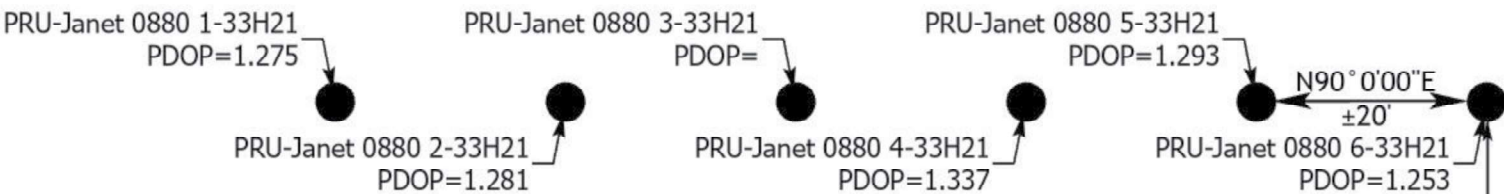
DATE OF FIELD WORK:09/07/2022	DRAWING COMPLETION: 11/16/2022
SURVEYED BY: Curtis Utley	DRAWN BY: Alex Lawton
CHECKED BY: Randall Miller	

T.7N, R80W, 6th P.M.



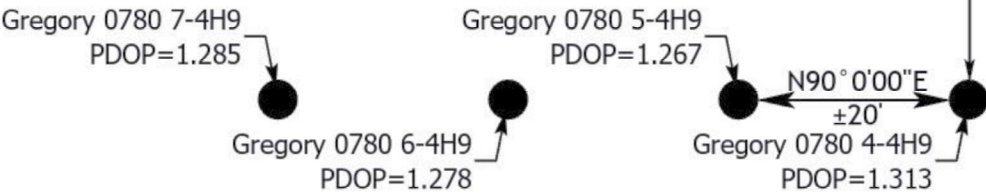
Directional Well Plat

Janet 0780 S5 Pad
As shown the NE1/4NE1/4 Section 5
T7N, R80W, 6thP.M.
Jackson County, Colorado
Sheet 2 of 2



Well Head Spacing Detail
Janet 0780 S5 Pad

N0° 0'00" E ±165'



Notes:
1. THIS FIELD SURVEY CONFORMS TO THE MINIMUM STANDARDS SET BY THE COGCC, RULE NO. 216
2. ALL DISTANCES AND BEARINGS SHOWN HEREON ARE GRID VALUES AS GPS MEASURED IN THE FIELD, WITH TIES TO WELLS MEASURED PERPENDICULAR TO LINES SHOWN HEREON.

BASIS OF BEARINGS
US STATE PLANE 1983
CO NORTH 0501 GRID
EPSG: 2231

Legend
● Surface Location

Scale: 1:200



NORTH PARK ENGINEERING & CONSULTING, INC.

P.O. BOX 395
WALDEN, CO 80480
(970) 723-3725

DATE OF FIELD WORK:09/07/2022	DRAWING COMPLETION: 11/16/2022
SURVEYED BY:	DRAWN BY:
Curtis Utley	Alex Lawton
CHECKED BY:	Randall Miller