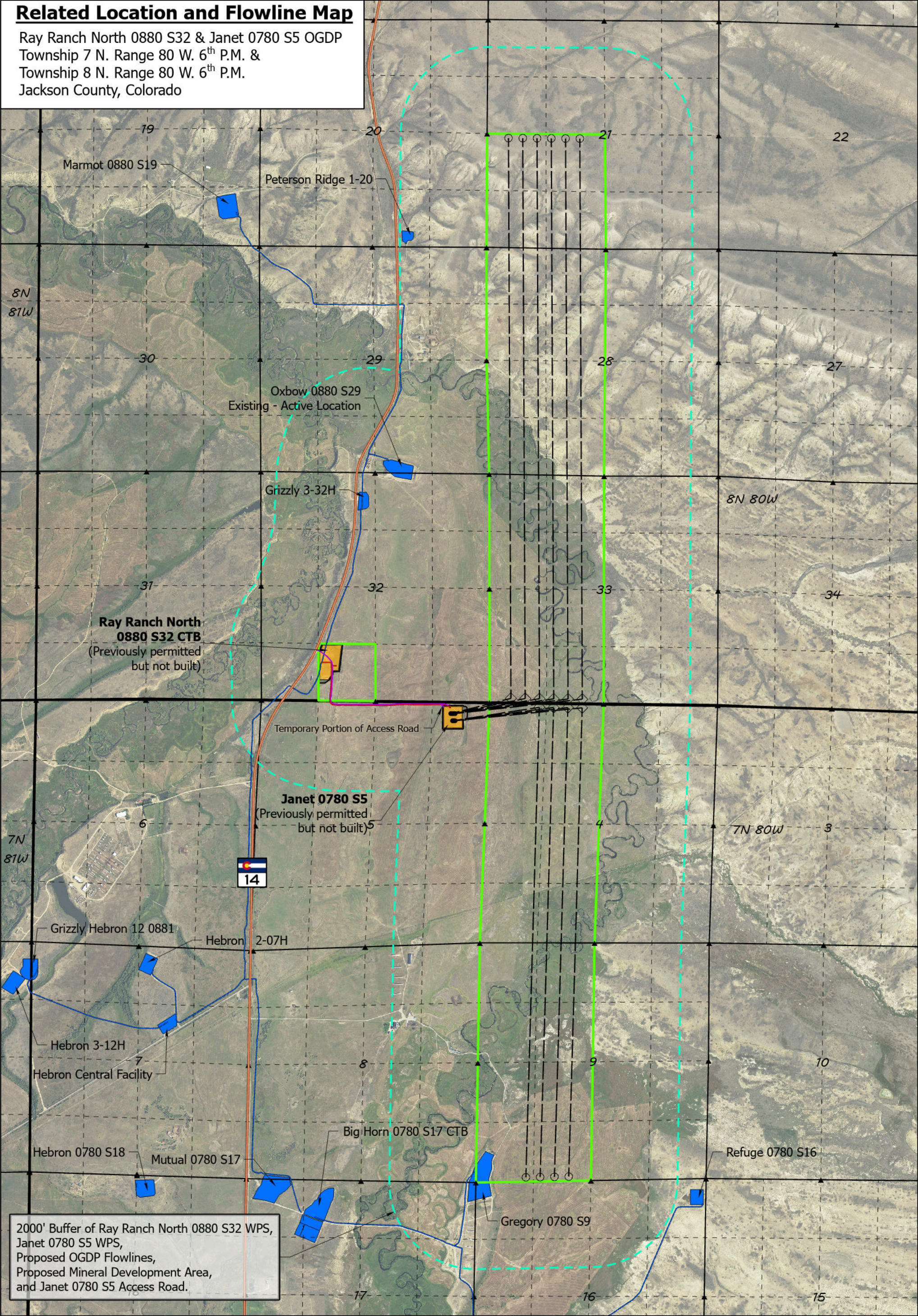


Related Location and Flowline Map

Ray Ranch North 0880 S32 & Janet 0780 S5 OGD
Township 7 N. Range 80 W. 6th P.M. &
Township 8 N. Range 80 W. 6th P.M.
Jackson County, Colorado



OGDP WPS

Non-OGDP WPS (Active)

Planned Flowlines

Existing Flowlines

Janet Access Road

Proposed Mineral Development

Planned Well Locations

Well Surface Location

Top of Productive Zone

Target Bottom Hole

Planned Well Bores

N

W

E

S

Scale: 1:24,000

Miles

0

0.13

0.25

0.5

FULCRUM

ENERGY OPERATING

NORTH PARK ENGINEERING & CONSULTING, INC.

P.O. BOX 395
WALDEN, CO 80480
(970) 723-3725

DRAWING COMPLETION: 8/21/2023

SURVEYED BY: CJU

DRAWN BY: ADL

CHECKED BY: RRM