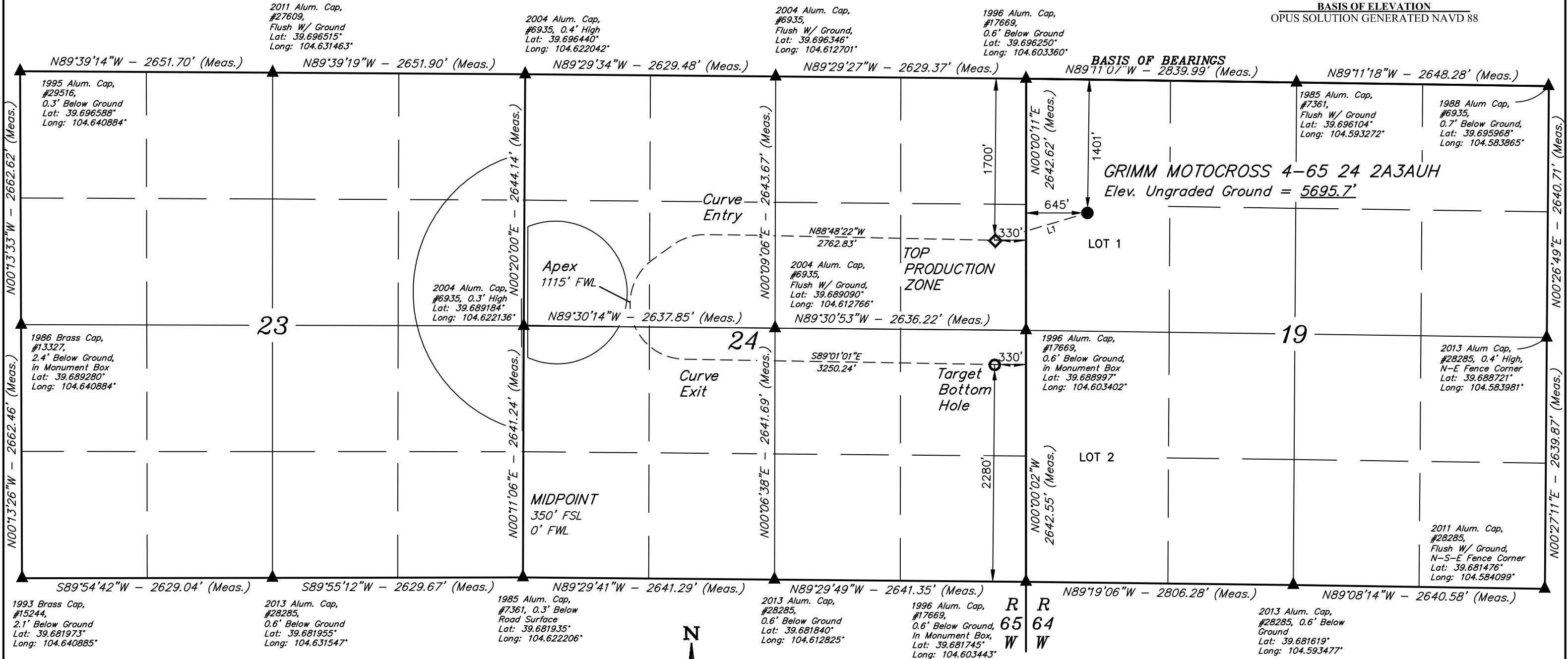


- LEGEND:
- = PROPOSED WELLHEAD.
 - ◆ = TOP PRODUCTION ZONE.
 - = TARGET BOTTOM HOLE.
 - ▲ = SECTION CORNERS LOCATED. (NAD 83)

T4S, R64W, 6th P.M.

CRESTONE PEAK
RESOURCES OPERATING, LLC
GRIMM MOTOCROSS 4-65 24 2A3AUH
LOT 1, SECTION 19, T4S, R64W, 6th P.M.
ARAPAHOE COUNTY, COLORADO

BASIS OF ELEVATION
OPUS SOLUTION GENERATED NAVD 88

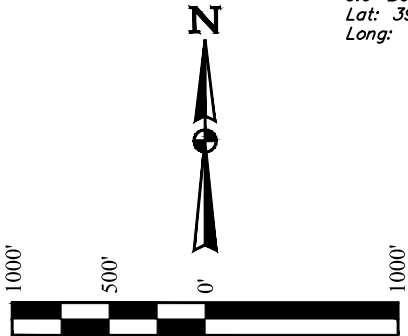


NOTE:
Distances referenced
on plat to section lines
are perpendicular.

LINE TABLE		
LINE	DIRECTION	LENGTH
L1	S73°36'40"W	1016.31'

PDOP = 1.6

NAD 83 (SURFACE HOLE LOCATION)	NAD 83 (TOP PRODUCTION ZONE)	NAD 83 (TARGET BOTTOM HOLE)
LATITUDE = 39°41'32.54" (39.692371°)	LATITUDE = 39°41'29.75" (39.691596°)	LATITUDE = 39°41'16.85" (39.688015°)
LONGITUDE = 104°36'03.93" (104.601091°)	LONGITUDE = 104°36'16.41" (104.604559°)	LONGITUDE = 104°36'16.49" (104.604580°)
STATE PLANE NAD 83 (CO. CENTRAL)	STATE PLANE NAD 83 (CO. CENTRAL)	STATE PLANE NAD 83 (CO. CENTRAL)
N: 1678326.83' E: 3252960.68'	N: 1678034.84' E: 3251987.49'	N: 1676730.14' E: 3251994.55'



CERTIFICATE
THIS IS TO CERTIFY THAT THE ABOVE PLAT WAS PREPARED FROM FIELD
NOTES OF ACTUAL SURVEYS MADE BY ME OR UNDER MY SUPERVISION
AND THAT THE SAME ARE TRUE AND CORRECT TO THE BEST OF MY
KNOWLEDGE AND BELIEF.



REV: 02 11-13-23 D.J.G. (TPZ & BHL CHANGE)



UELS, LLC
Corporate Office * 85 South 200 East
Vernal, UT 84078 * (435) 789-1017

SURVEYED BY	NATE WELCH	12-03-21	SCALE
DRAWN BY	K.C.	02-21-23	1" = 1000'

WELL LOCATION PLAT