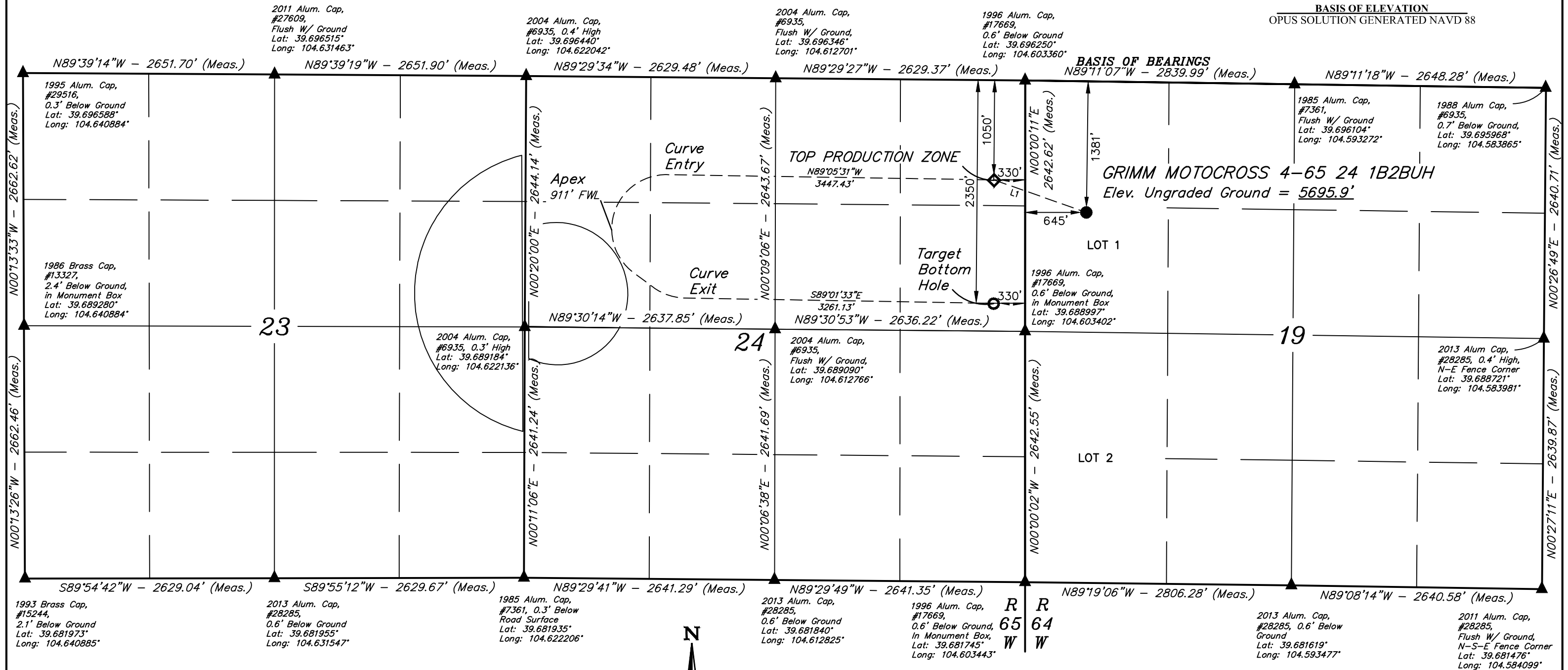


● = PROPOSED WELLHEAD.  
 ◆ = TOP PRODUCTION ZONE.  
 ○ = TARGET BOTTOM HOLE.  
 ▲ = SECTION CORNERS LOCATED. (NAD 83)

**CRESTONE PEAK  
RESOURCES OPERATING, LLC**  
**GRIMM MOTOCROSS 4-65 24 1B2BUH**  
**LOT 1, SECTION 19, T4S, R64W, 6th P.M.**  
**ARAPAHOE COUNTY, COLORADO**

**BASIS OF ELEVATION**  
OPUS SOLUTION GENERATED NAVD 88



Distances referenced on plat to section lines are perpendicular.

Drill path has been provided by  
CRESTONE PEAK RESOURCES  
OPERATING, LLC.

**PDOP = 1.6**

LINE TABLE		
LINE	DIRECTION	LENGTH
L1	N70°36'04"W	1033.66'

NAD 83 (SURFACE HOLE LOCATION)	NAD 83 (TOP PRODUCTION ZONE)	NAD 83 (TARGET BOTTOM HOLE)
LATITUDE = 39°41'32.73" (39.692426°)	LATITUDE = 39°41'36.17" (39.693380°)	LATITUDE = 39°41'23.32" (39.689812°)
LONGITUDE = 104°36'03.93" (104.601091°)	LONGITUDE = 104°36'16.38" (104.604549°)	LONGITUDE = 104°36'16.45" (104.604570°)
STATE PLANE NAD 83 (CO. CENTRAL)	STATE PLANE NAD 83 (CO. CENTRAL)	STATE PLANE NAD 83 (CO. CENTRAL)
N: 1678346.77' E: 3252960.57'	N: 1678684.69' E: 3251983.98'	N: 1677384.99' E: 3251990.99'

CERTIFICATE

THIS IS TO CERTIFY THAT THE ABOVE PLAN WAS PREPARED FROM THE  
NOTES OF ACTUAL SURVEYS MADE IN MY HAND UNDER MY SUPERVISION  
AND THAT THE SAME ARE TRUE AND CORRECT TO THE BEST OF MY  
KNOWLEDGE AND BELIEF.

REGISTERED LAND SURVEYOR  
REGISTRATION NO. 28285  
STATE OF COLORADO

REV: 02    11-13-23    D.J.G.    (TPZ & BHL CHANGE)



**UELS, LLC**  
Corporate Office \* 85 South 200 East  
Vernal, UT 84078 \* (435) 789-1017

<b>SURVEYED BY</b>	NATE WELCH	12-03-21	<b>SCALE</b>
<b>DRAWN BY</b>	K.C.	02-21-23	1" = 1000'

## WELL LOCATION PLAT