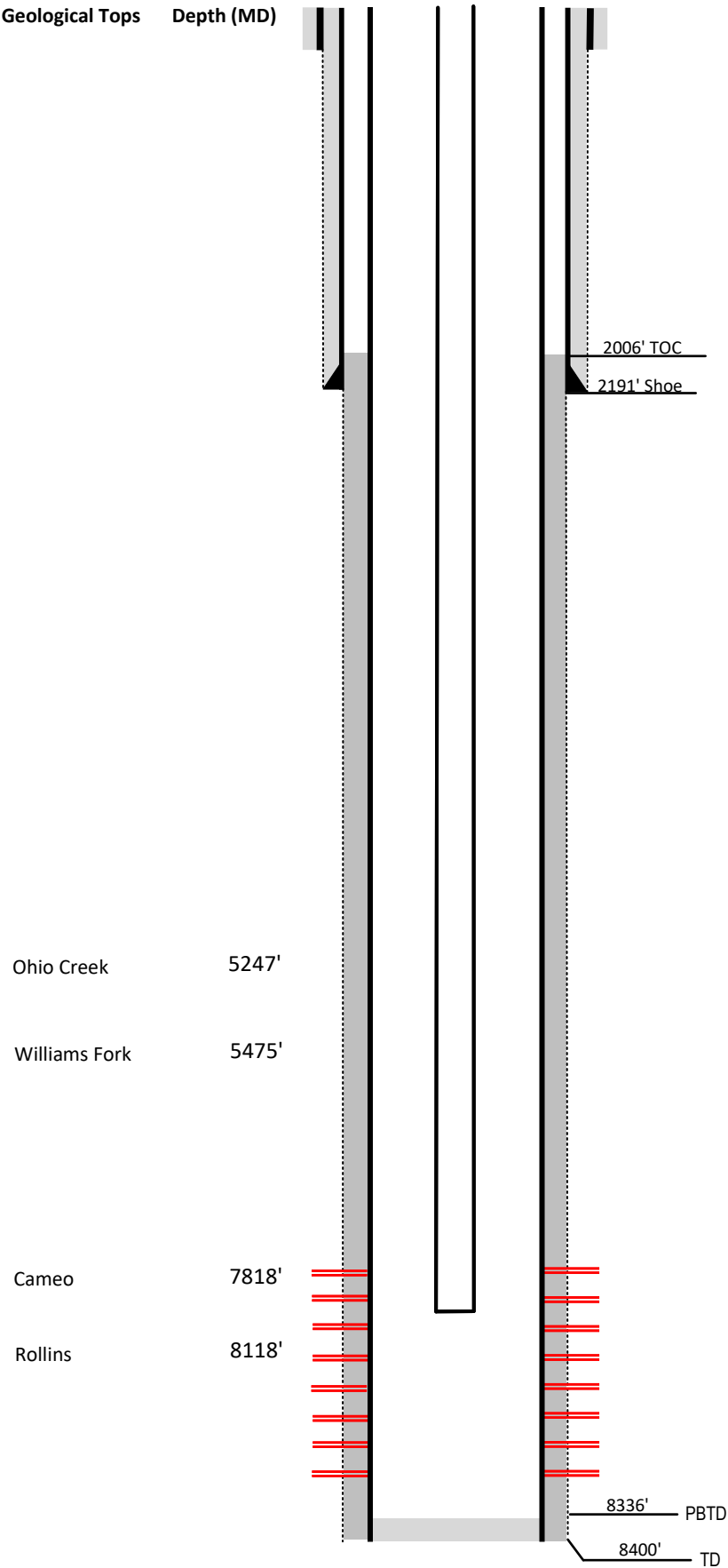


Laramie Energy

Current Wellbore Diagram
Not to scale

FEDERAL WELL: YES ☐ NO ☒



Well Name Nvega #35-311

API 05-077-09446-00

Surface Location SWSE Sec 26 T9S R93W

GPS Coordinates 39.242033, -107.734242

County, State Mesa County, Co

Diagram Date 4/22/2024

Hole 24" @ 76'

Conductor 16" @ 76'

Cement Surface

Surface Hole 12.25" @ 2191'

Casing 8 5/8" 32# J-55 @ 2191'

Cement 789 sks

TOC Surface

Production Hole 7.875" @ 8397'

Casing 4 1/2" 11.6# I-80 @ 8397'

Cement 813 sks

TOC 2006'

Tubing 2 3/8" I-80 EUE @ 7575'

Perforations **Top** **Bottom**

6666' 8309'