

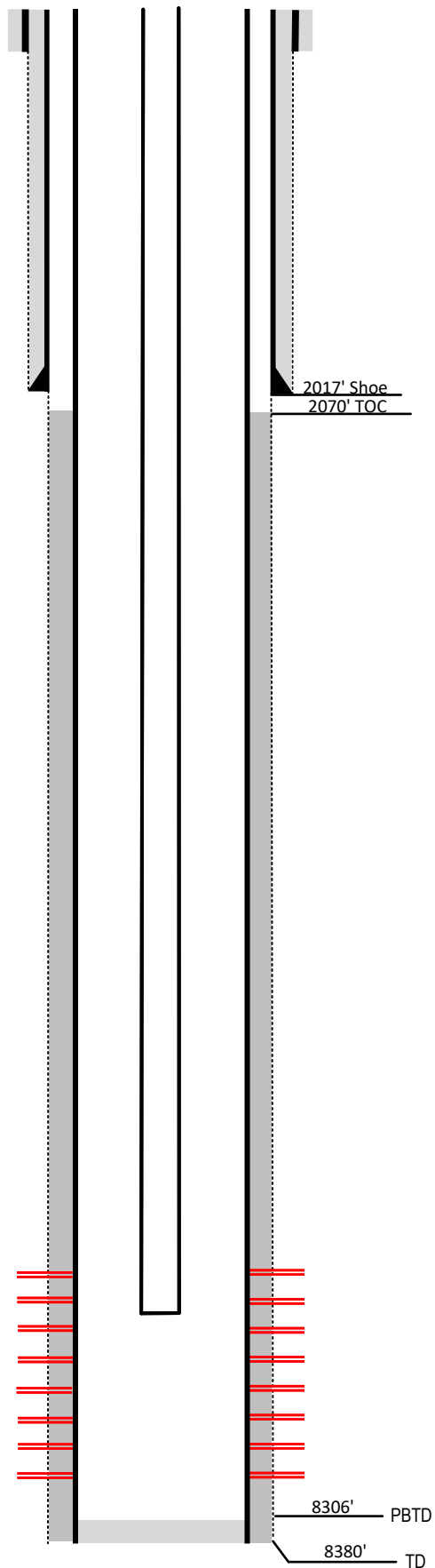
Laramie Energy

Current Wellbore Diagram
Not to scale

FEDERAL WELL: YES NO

CA COC 71995

Geological Tops Depth (MD)



Well Name Nvega #26-334
API 05-077-09463-00
Surface Location SWSE Sec 26 T9S R93W
GPS Coordinates 39.242086, -107.734189
County, State Mesa County, Co
Diagram Date 4/22/2024

Hole	20" @ 57'
Conductor	16" @ 57'
Cement	Surface

Surface Hole	12.25" @ 2017'
Casing	8 5/8" 32# J-55 @ 2017'
Cement	839 sks
TOC	Surface

Production Hole	7.875" @ 8380'
Casing	4 1/2" 11.6# I-80 @ 8380'
Cement	887 sks
TOC	2070'

Tubing	2 3/8" I-80 EUE @ 7633'
---------------	-------------------------

Perforations	Top	Bottom
	6886'	8248'

Ohio Creek 5258'

Williams Fork 5488'

Cameo 7796'

Rollins 8103'