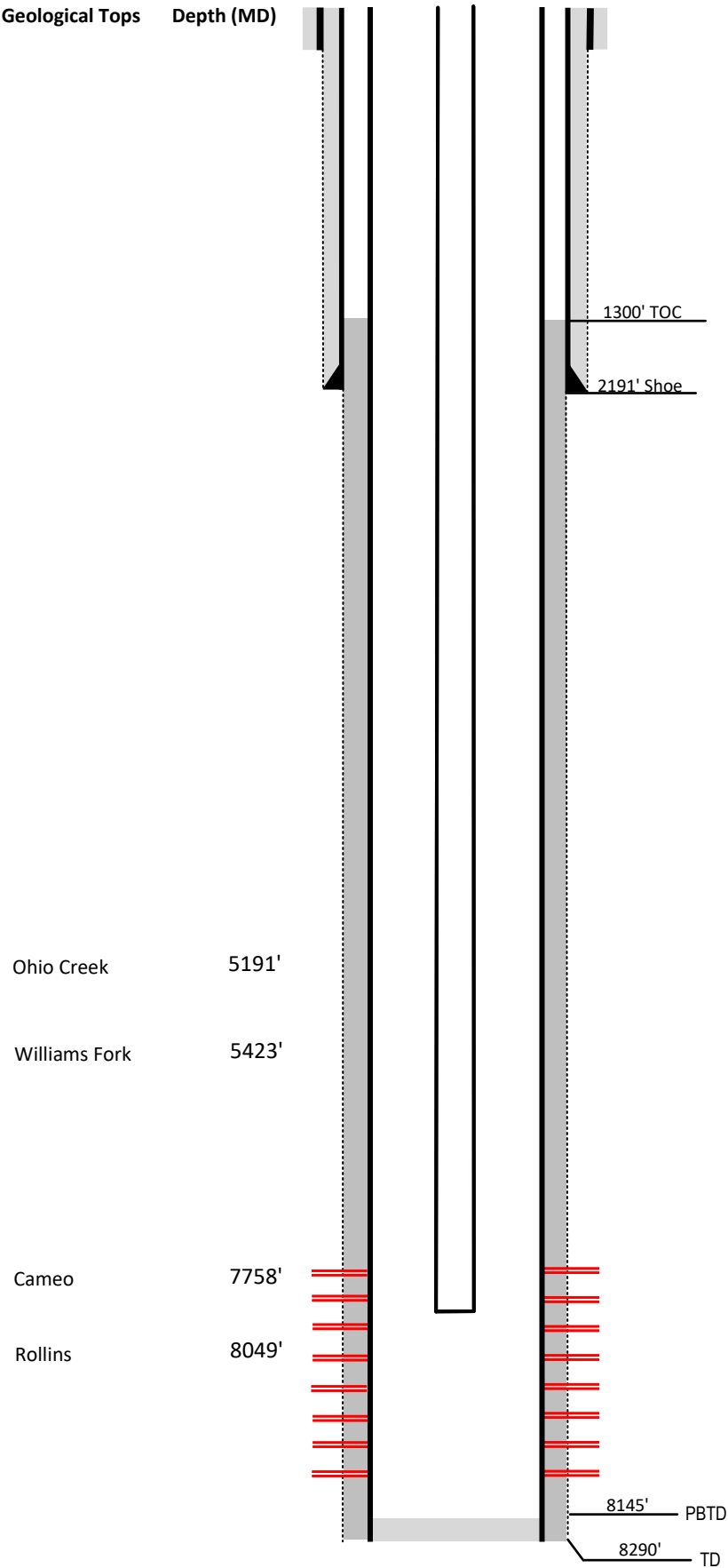


Laramie Energy

Current Wellbore Diagram
Not to scale

FEDERAL WELL: YES ☒ NO ☐
CA COC 71995



Well Name Nvega #26-341

API 05-077-09445-00

Surface Location SWSE Sec 26 T9S R93W

GPS Coordinates 39.242069, -107.734206

County, State Mesa County, Co

Diagram Date 4/22/2024

Hole 24" @ 56'

Conductor 16" @ 56'

Cement Surface

Surface Hole 12.25" @ 2191'

Casing 8 5/8" 32# J-55 @ 2191'

Cement 700 sks

TOC Surface

Production Hole 7.875" @ 8284'

Casing 4 1/2" 11.6# I-80 @ 8284'

Cement 849 sks

TOC 1300'

Tubing 2 3/8" I-80 EUE @ 7451'

Perforations Top Bottom

6719' 8121'