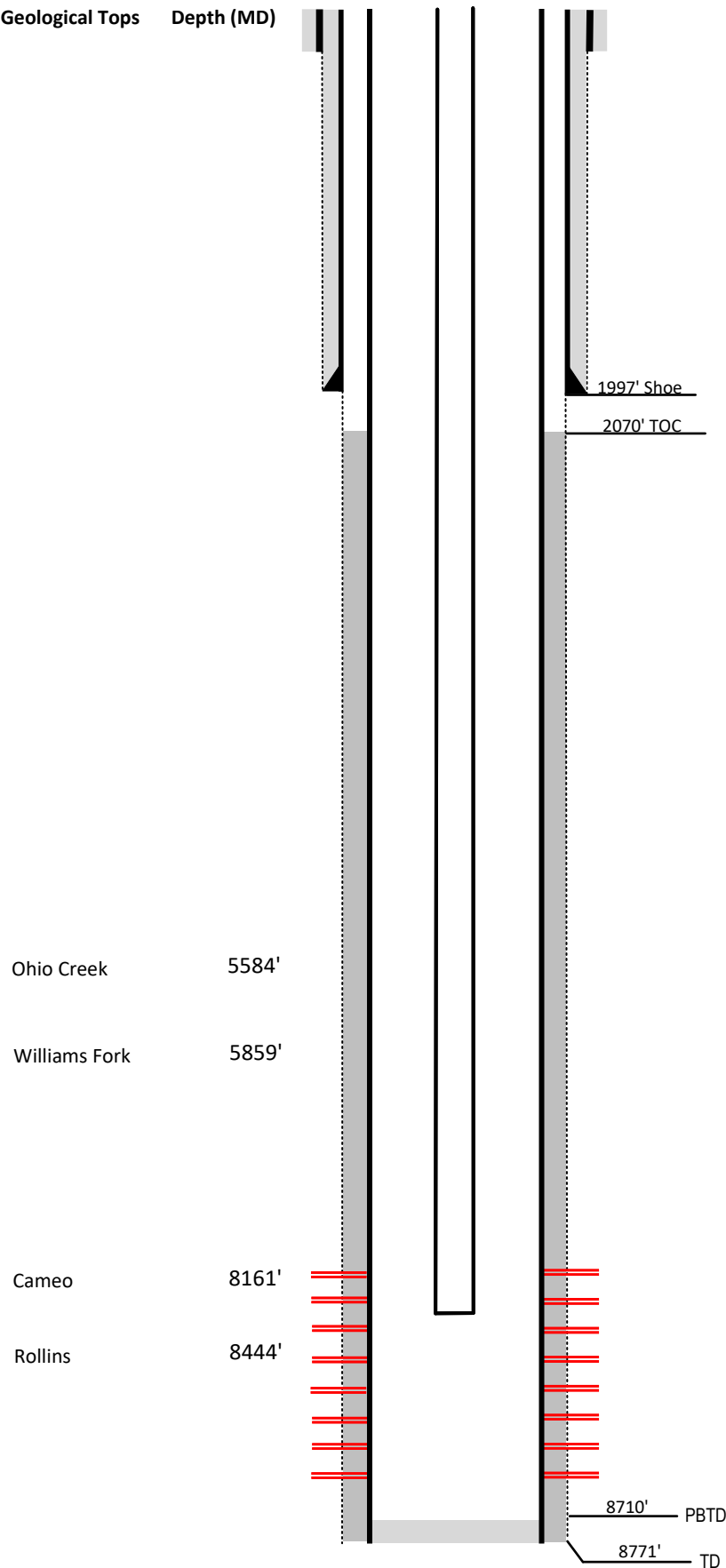


Laramie Energy

Current Wellbore Diagram
Not to scale

FEDERAL WELL: YES ☒ NO ☐
CA COC 71995



Well Name	Nvega #26-324
API	05-077-09460-00
Surface Location	SWSE Sec 26 T9S R93W
GPS Coordinates	39.242119, -107.734153
County, State	Mesa County, Co
Diagram Date	4/22/2024

Hole	24" @ 60'
Conductor	16" @ 60'
Cement	Surface

Surface Hole	11" @ 1997'
Casing	8 5/8" 32# J-55 @ 1997'
Cement	506 sks
TOC	Surface

Production Hole	7.875" @ 8770'
Casing	4 1/2" 11.6# I-80 @ 8770'
Cement	1003 sks
TOC	2070'

Tubing	2 3/8" I-80 EUE @ 7988'
--------	-------------------------

Perforations	Top	Bottom
	7244'	8674'