

OSKARSON #4

API # 123-09237

Loc. # 318514

FIELD NAME SPINDLE - #77900

Spud Date 6/18/1977

Basin DENVER - JULESBURG

Location SWSW 33 2N68W 6

Elevation GL (ft) 4978

Elevation KB (ft) 4988

TD (ft) 5100

PBTD (ft) 5028

Formation Tops

FOX HILLS TOP - 46'

FOX HILLS BASE - 309'

Base of Upper Pierre - 3380'

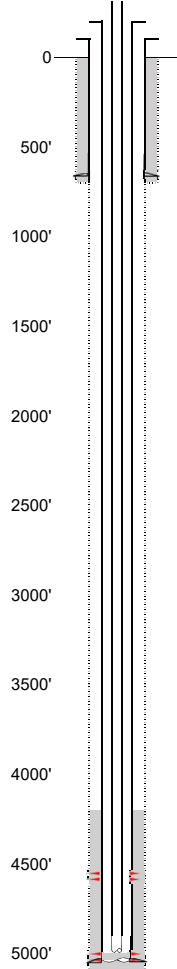
SUSSEX - 4355'

SUSSEX Fm Production w/in 1 mi.

BENTONITE - 4781'

SHANNON - 4974'

SHANNON Fm Production w/in 1 mi.

EXISTING**Existing Casing and Cement Coverage**

FOX HILLS TOP - 46'

FOX HILLS BASE - 309'

SURF: Size: 8.625", Hole Size: 12.25 in.
Depth: 692 ft., Weight: 24
Cement: 500 sx, Top: 0 ft., Method: Vis

Deepest DWR w/in 1 mi. = 280'

1ST, Size: 4.5", Hole Size: 7.875"
Depth: 5085 ft., Weight: 10.5
Cement: 200 sx, TOC: 4200', Method: CALC

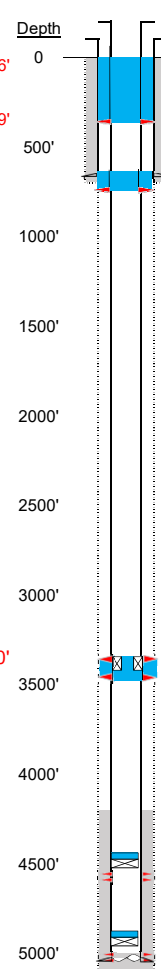
Base of Upper Pierre - 3380'

tubing depth UNK
TOC = 4200' (CALC by ECMC)
SUSX Perfs 4526' - 4576'
SNSD Perfs 4984' - 4996'
PBTD (ft) 5028'
TD (ft) 5100'

SUSSEX - 4355'

BENTONITE - 4781'

SHANNON - 4974'

PROPOSED**Depth****Plug Placement**Perf at 359', pump 135
sx through perfs.
Leave 10 sx inside to
surface.
Perf at 742, pump 30
sx through perfs.
Leave 15 sx inside.
Tag above 642' reqd.Perf at 3430' & 3330'
CICR @ 3350', pump
40 sx through perfs.
Leave 10 sx on top.

CBL Required

VERIFY TOC w/ CBL
CIBP w/ 2 sx @ 4451'
(75' above top SUSX
perf).Pressure test casing
after setting CIBP.CIBP w/ 2 sx @ 4909'
(75' above top SHSD
perf).