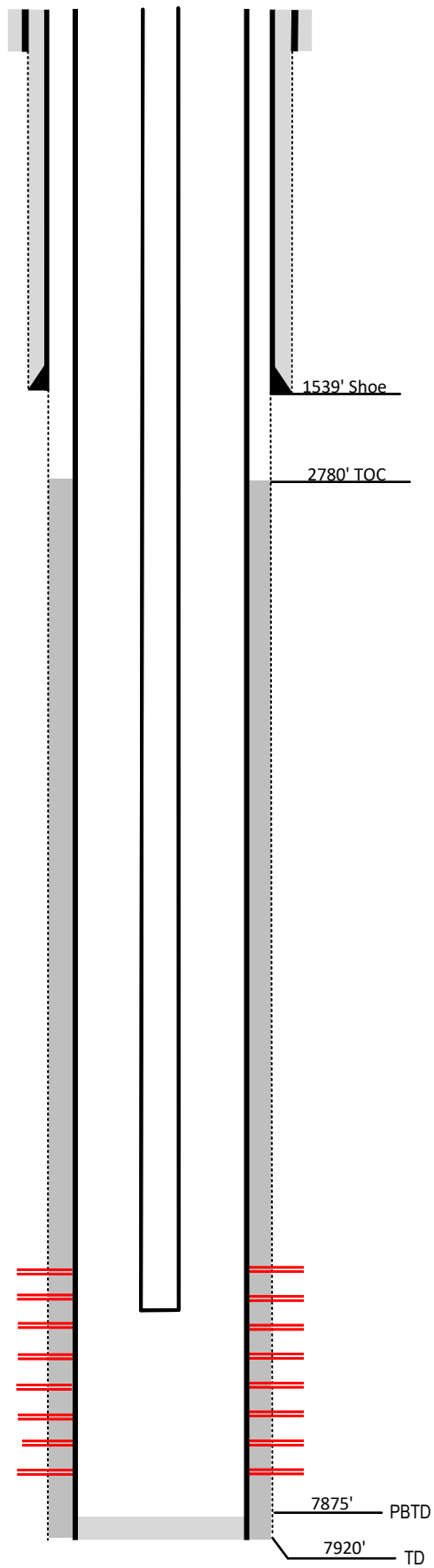


Laramie Energy

Current Wellbore Diagram
Not to scale

FEDERAL WELL: YES NO

Geological Tops Depth (MD)



Well Name Vega Unit #9-431
API 05-077-09124-00
Surface Location SENE Sec 9 T10S R93W
GPS Coordinates 39.206490, -107.767540
County, State Mesa County, Co
Diagram Date 4/19/2024

Hole	24" @ 60'
Conductor	16" @ 60'
Cement	Surface

Surface Hole	11" @ 1539'
Casing	8 5/8" 32# J-55 @ 1539'
Cement	736 sks
TOC	Surface

Production Hole	7.875" @ 7912'
Casing	4 1/2" 11.6# I-80 @ 7912'
Cement	1137 sks
TOC	2780'

Tubing	2 3/8" I-80 EUE @ 6625'
---------------	-------------------------

Perforations	Top	Bottom
	6716'	7731'

Ohio Creek 4769'
 Williams Fork 5029'
 Cameo
 Rollins 7289'
 7599'

7875' PBTD
 7920' TD