

Argenta 34-10 #31-1
Site Reclamation
Photographic Log
Hilcorp Energy Company

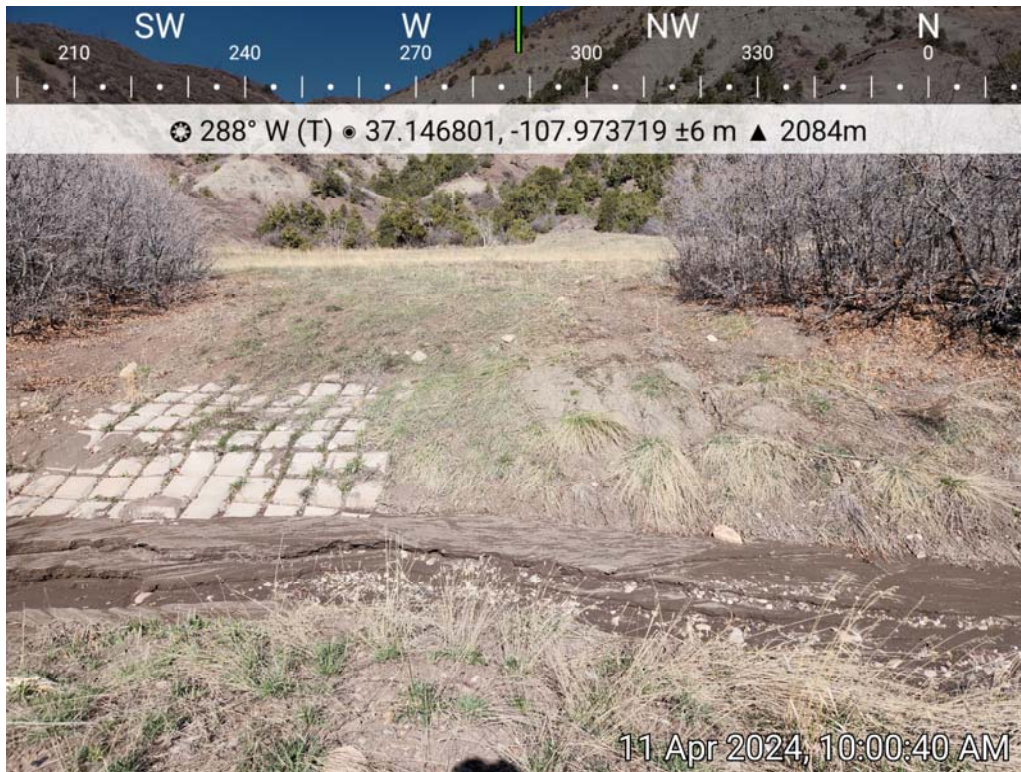


Photo 1: Argenta 34-10 #31-1 well pad access before seeding and mulching.

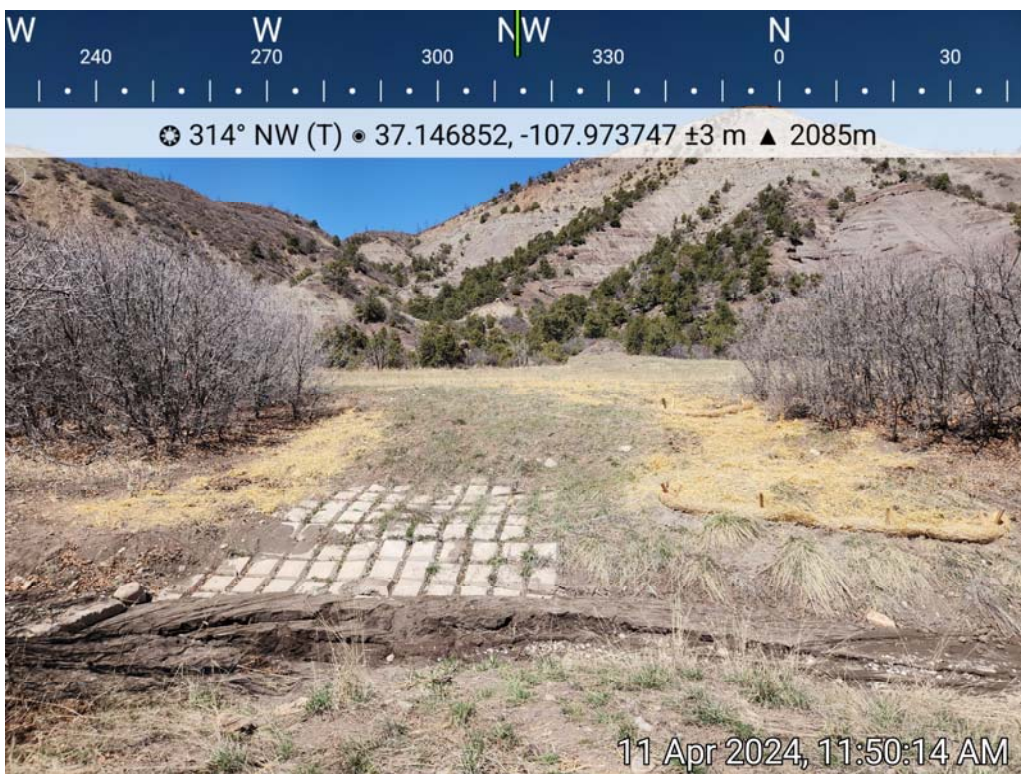


Photo 2: Argenta 34-10 #31-1 well pad access after seeding and mulching.

**Argenta 34-10 #31-1
Site Reclamation
Photographic Log
Hilcorp Energy Company**



Photo 3: Argenta 34-10 #31-1 rilling before seeding and mulching.



Photo 4: Argenta 34-10 #31-1 rilling before seeding and mulching.

Argenta 34-10 #31-1
Site Reclamation
Photographic Log
Hilcorp Energy Company



Photo 5: Argenta 34-10 #31-1 rilling removed and area has been seeded and mulched.



Photo 6: Argenta 34-10 #31-1 rilling removed and area has been seeded and mulched.

Argenta 34-10 #31-1
Site Reclamation
Photographic Log
Hilcorp Energy Company



Photo 7: Argenta 34-10 #31-1 access road before seeding and mulching.



Photo 8: Argenta 34-10 #31-1 access road after seeding and mulching.

Argenta 34-10 #31-1
Site Reclamation
Photographic Log
Hilcorp Energy Company



Photo 9: Argenta 34-10 #31-1 access road before seeding and mulching.



Photo 10: Argenta 34-10 #31-1 access road after seeding and mulching.

Argenta 34-10 #31-1
Site Reclamation
Photographic Log
Hilcorp Energy Company



Photo 11: Argenta 34-10 #31-1 access road after seeding and mulching.



Photo 12: Argenta 34-10 #31-1 access road after seeding and mulching.

Argenta 34-10 #31-1
Site Reclamation
Photographic Log
Hilcorp Energy Company



Photo 13: Argenta 34-10 #31-1 access road after seeding and mulching.



Photo 14: Argenta 34-10 #31-1 access road after seeding and mulching.