

Chevron DJ Basin

DRAKE 17N
 Drake Pad
 North American Datum 1983 , US State Plane 1983, Colorado Northern Zone
 Ground Elevation: 4736.0
 +N/-S +E/-W Northing Easting Latitude Longitude
 0.0 0.0 1358318.35 3256488.57 40.313333 -104.580229
 P272 - RKB 28.5' Well @ 4764.5ft (P272 - RKB 28.5')



Drake Pad
DRAKE 17N
 Drake 17N Final Surveys
 9:11, March 25 2024



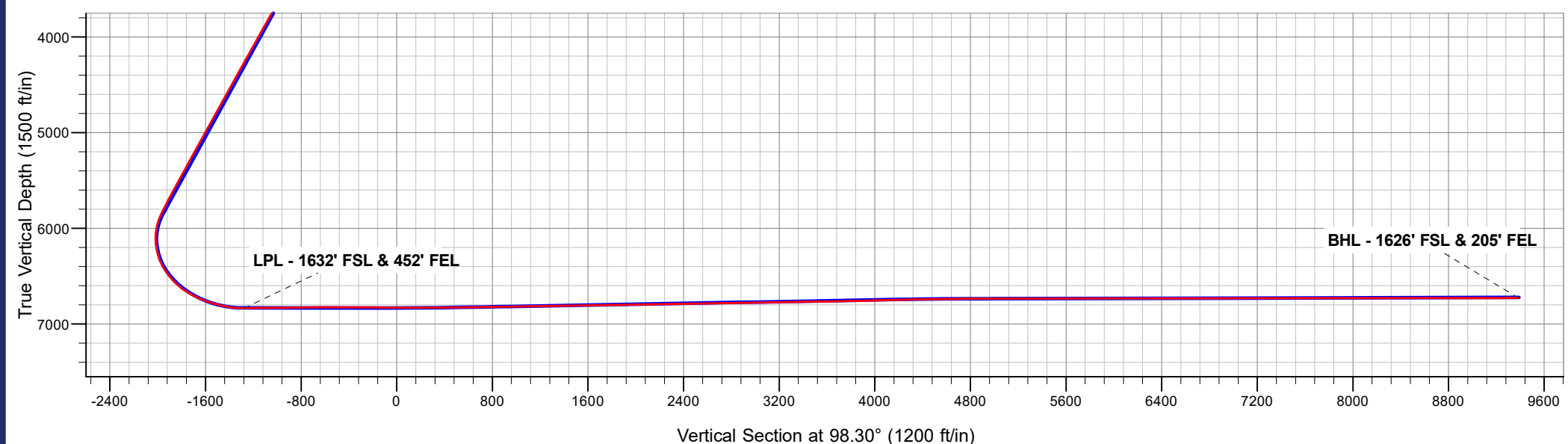
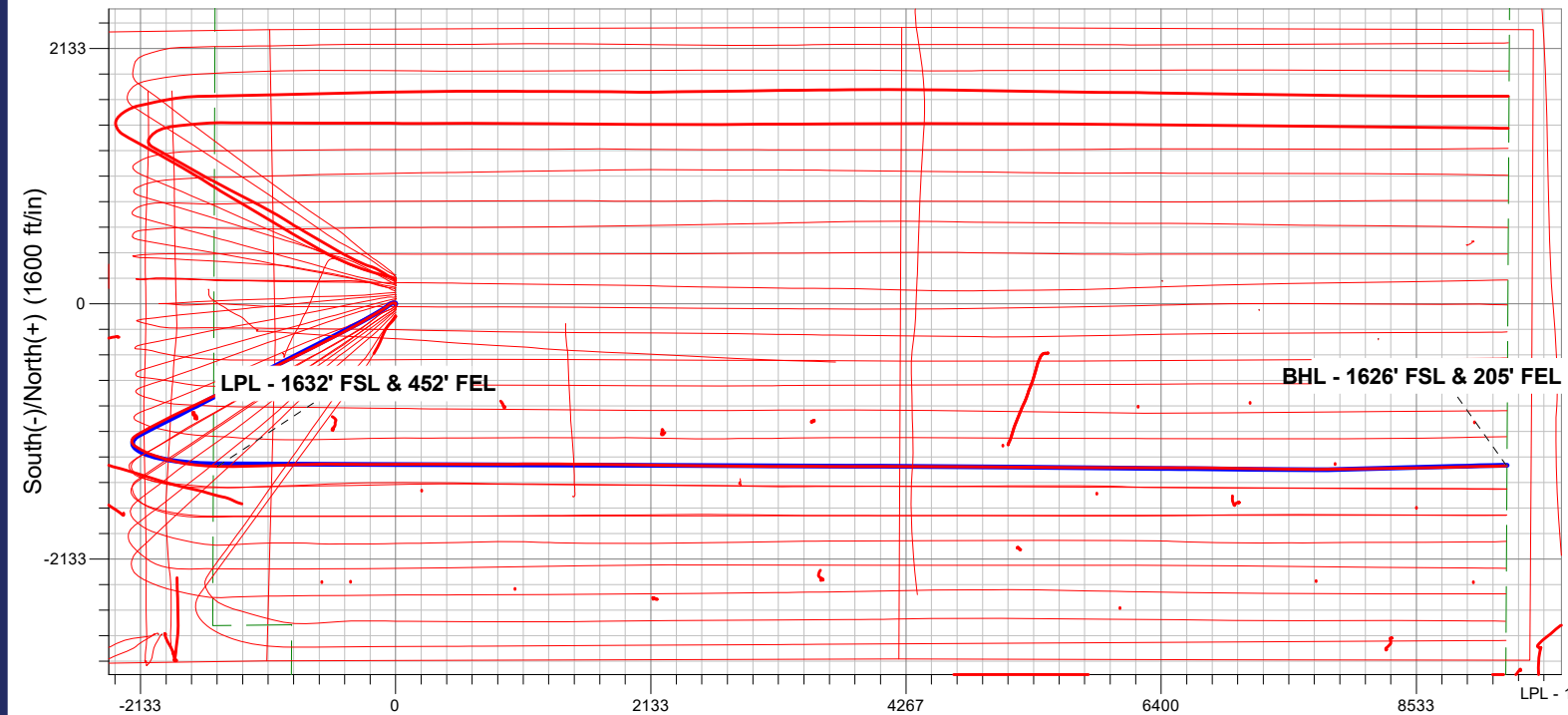
Azimuths to True North
 Magnetic North: 7.70°

Magnetic Field
 Strength: 51718.8nT
 Dip Angle: 66.57°
 Date: 07/07/2023
 Model: HRGM

ANNOTATIONS

MD	TVD	Annotation
7862.0	6834.6	LPL - 1632' FSL & 452' FEL
18639.0	6727.6	BHL - 1626' FSL & 205' FEL

FINAL SURVEY
Projected Bottom Hole Location
18639.0' MD / 6727.6' TVD
90.23° INC / 88.68° AZM
1626' FSL / 205' FEL



Vertical Section at 98.30° (1200 ft/in)

Chevron DJ Basin

SEC.17-T4N-R64W

Drake Pad

DRAKE 17N

Drake 17N

Design: Drake 17N Final Surveys

Survey Report - Geographic

25 March, 2024

Ensign

Survey Report - Geographic

Company: Chevron DJ Basin	Local Co-ordinate Reference: Well DRAKE 17N
Project: SEC.17-T4N-R64W	TVD Reference: Well @ 4764.5ft (P272 - RKB 28.5')
Site: Drake Pad	MD Reference: Well @ 4764.5ft (P272 - RKB 28.5')
Well: DRAKE 17N	North Reference: True
Wellbore: Drake 17N	Survey Calculation Method: Minimum Curvature
Design: Drake 17N Final Surveys	Database: US_EDM

Project SEC.17-T4N-R64W, Weld County, Colorado	
Map System: US State Plane 1983	System Datum: Mean Sea Level
Geo Datum: North American Datum 1983	
Map Zone: Colorado Northern Zone	Using geodetic scale factor

Site Drake Pad		
Site Position:	Northing: 1,358,393.41 usft	Latitude: 40.313539
From: Lat/Long	Easting: 3,256,487.58 usft	Longitude: -104.580230
Position Uncertainty: 0.0 ft	Slot Radius: 13-3/16 "	Grid Convergence: 0.59 °

Well DRAKE 17N		
Well Position +N/-S 0.0 ft	Northing: 1,358,318.35 usft	Latitude: 40.313333
+E/-W 0.0 ft	Easting: 3,256,488.58 usft	Longitude: -104.580229
Position Uncertainty 0.0 ft	Wellhead Elevation: ft	Ground Level: 4,736.0 ft

Wellbore Drake 17N					
Magnetics	Model Name	Sample Date	Declination (°)	Dip Angle (°)	Field Strength (nT)
	HRGM	07/07/2023	7.70	66.57	51,718.82981308

Design Drake 17N Final Surveys				
Audit Notes:				
Version: 1.0	Phase: ACTUAL	Tie On Depth: 0.0		
Vertical Section:	Depth From (TVD) (ft)	+N/-S (ft)	+E/-W (ft)	Direction (°)
	0.0	0.0	0.0	98.30

Survey Program		Date 03/25/2024		
From (ft)	To (ft)	Survey (Wellbore)	Tool Name	Description
161.5	18,639.0	Survey #1 (Drake 17N)	MWD	MWD - Standard

Survey									
Measured Depth (ft)	Inclination (°)	Azimuth (°)	Vertical Depth (ft)	+N/-S (ft)	+E/-W (ft)	Map Northing (usft)	Map Easting (usft)	Latitude	Longitude
0.0	0.00	0.00	0.0	0.0	0.0	1,358,318.35	3,256,488.58	40.313333	-104.580229
161.5	0.26	163.79	161.5	-0.4	0.1	1,358,318.00	3,256,488.68	40.313332	-104.580229
252.5	0.53	153.95	252.5	-0.9	0.3	1,358,317.43	3,256,488.93	40.313330	-104.580228
344.5	1.06	171.00	344.5	-2.2	0.7	1,358,316.21	3,256,489.26	40.313327	-104.580227
461.5	0.35	274.89	461.5	-3.2	0.5	1,358,315.17	3,256,489.09	40.313324	-104.580228
548.5	1.41	337.99	548.5	-2.2	-0.2	1,358,316.18	3,256,488.41	40.313327	-104.580230
635.5	2.29	347.66	635.4	0.5	-1.0	1,358,318.86	3,256,487.61	40.313334	-104.580233
722.5	2.90	314.61	722.3	3.8	-2.9	1,358,322.08	3,256,485.64	40.313343	-104.580240
809.5	5.19	284.03	809.1	6.3	-8.3	1,358,324.53	3,256,480.23	40.313350	-104.580259
896.5	7.65	265.40	895.6	6.7	-17.9	1,358,324.92	3,256,470.63	40.313352	-104.580294
981.5	9.15	253.62	979.7	4.4	-30.0	1,358,322.43	3,256,458.53	40.313345	-104.580337
1,069.5	10.20	237.62	1,066.4	-1.8	-43.3	1,358,316.15	3,256,445.30	40.313328	-104.580385

Ensign

Survey Report - Geographic

Company:	Chevron DJ Basin	Local Co-ordinate Reference:	Well DRAKE 17N
Project:	SEC.17-T4N-R64W	TVD Reference:	Well @ 4764.5ft (P272 - RKB 28.5')
Site:	Drake Pad	MD Reference:	Well @ 4764.5ft (P272 - RKB 28.5')
Well:	DRAKE 17N	North Reference:	True
Wellbore:	Drake 17N	Survey Calculation Method:	Minimum Curvature
Design:	Drake 17N Final Surveys	Database:	US_EDM

Survey									
Measured Depth (ft)	Inclination (°)	Azimuth (°)	Vertical Depth (ft)	+N/-S (ft)	+E/-W (ft)	Map Northing (usft)	Map Easting (usft)	Latitude	Longitude
1,156.5	10.64	234.63	1,152.0	-10.5	-56.4	1,358,307.24	3,256,432.34	40.313304	-104.580432
1,245.5	12.66	233.05	1,239.2	-21.2	-70.8	1,358,296.47	3,256,417.96	40.313275	-104.580484
1,332.5	14.95	234.11	1,323.6	-33.5	-87.6	1,358,283.99	3,256,401.37	40.313241	-104.580543
1,417.5	16.36	236.92	1,405.5	-46.4	-106.5	1,358,270.83	3,256,382.59	40.313206	-104.580611
1,504.5	18.82	238.85	1,488.4	-60.4	-128.8	1,358,256.65	3,256,360.46	40.313167	-104.580691
1,593.5	19.61	240.08	1,572.5	-75.2	-154.0	1,358,241.51	3,256,335.39	40.313126	-104.580782
1,678.5	20.31	240.08	1,652.4	-89.7	-179.1	1,358,226.78	3,256,310.39	40.313087	-104.580872
1,692.5	20.22	241.14	1,665.5	-92.1	-183.4	1,358,224.36	3,256,306.19	40.313080	-104.580887
1,802.0	19.81	238.78	1,768.4	-110.9	-215.8	1,358,205.27	3,256,273.95	40.313029	-104.581003
1,897.0	21.51	238.66	1,857.3	-128.3	-244.4	1,358,187.57	3,256,245.49	40.312981	-104.581106
1,992.0	22.84	237.62	1,945.2	-147.2	-274.9	1,358,168.33	3,256,215.24	40.312929	-104.581215
2,086.0	25.40	240.70	2,031.0	-166.8	-307.9	1,358,148.35	3,256,182.45	40.312875	-104.581333
2,180.0	26.07	239.59	2,115.7	-187.2	-343.3	1,358,127.66	3,256,147.27	40.312819	-104.581460
2,274.0	28.25	242.04	2,199.3	-208.0	-380.7	1,358,106.38	3,256,110.02	40.312762	-104.581595
2,369.0	28.76	241.86	2,282.8	-229.4	-420.8	1,358,084.65	3,256,070.24	40.312703	-104.581738
2,464.0	28.75	243.24	2,366.1	-250.4	-461.3	1,358,063.17	3,256,029.91	40.312646	-104.581884
2,559.0	28.73	243.06	2,449.4	-271.1	-502.1	1,358,042.11	3,255,989.37	40.312589	-104.582030
2,653.0	28.76	243.70	2,531.8	-291.3	-542.5	1,358,021.44	3,255,949.17	40.312533	-104.582175
2,748.0	28.77	242.46	2,615.1	-312.0	-583.2	1,358,000.32	3,255,908.63	40.312477	-104.582321
2,842.0	29.13	241.65	2,697.3	-333.3	-623.4	1,357,978.59	3,255,868.66	40.312418	-104.582465
2,937.0	29.21	243.53	2,780.3	-354.6	-664.5	1,357,956.85	3,255,827.78	40.312360	-104.582612
3,032.0	28.94	242.82	2,863.3	-375.5	-705.7	1,357,935.59	3,255,786.81	40.312302	-104.582760
3,127.0	28.18	242.07	2,946.8	-396.5	-746.0	1,357,914.17	3,255,746.76	40.312245	-104.582904
3,221.0	28.71	244.34	3,029.4	-416.7	-786.0	1,357,893.58	3,255,707.01	40.312189	-104.583048
3,316.0	28.66	245.43	3,112.8	-436.0	-827.2	1,357,873.80	3,255,665.93	40.312136	-104.583196
3,410.0	28.70	243.13	3,195.2	-455.6	-867.9	1,357,853.81	3,255,625.50	40.312082	-104.583341
3,505.0	28.98	244.08	3,278.5	-476.0	-908.9	1,357,833.02	3,255,584.67	40.312027	-104.583489
3,600.0	29.03	244.43	3,361.5	-496.0	-950.4	1,357,812.58	3,255,543.39	40.311972	-104.583637
3,695.0	29.17	243.79	3,444.5	-516.1	-992.0	1,357,791.98	3,255,502.04	40.311916	-104.583786
3,790.0	28.75	243.71	3,527.7	-536.5	-1,033.2	1,357,771.21	3,255,461.00	40.311860	-104.583934
3,884.0	28.72	243.67	3,610.1	-556.5	-1,073.8	1,357,750.76	3,255,420.70	40.311805	-104.584080
3,978.0	28.67	244.16	3,692.5	-576.4	-1,114.3	1,357,730.49	3,255,380.38	40.311751	-104.584225
4,073.0	28.61	242.25	3,775.9	-596.9	-1,154.9	1,357,709.55	3,255,339.95	40.311695	-104.584371
4,167.0	29.10	244.87	3,858.3	-617.1	-1,195.5	1,357,688.94	3,255,299.55	40.311639	-104.584516
4,261.0	28.58	242.74	3,940.6	-637.1	-1,236.2	1,357,668.52	3,255,259.08	40.311584	-104.584662
4,356.0	28.25	244.72	4,024.2	-657.1	-1,276.8	1,357,648.09	3,255,218.76	40.311529	-104.584808
4,452.0	27.86	244.78	4,108.9	-676.3	-1,317.6	1,357,628.41	3,255,178.13	40.311476	-104.584954
4,546.0	27.94	245.54	4,192.0	-694.8	-1,357.5	1,357,609.52	3,255,138.41	40.311426	-104.585097
4,641.0	28.08	244.39	4,275.8	-713.7	-1,397.9	1,357,590.22	3,255,098.19	40.311374	-104.585242
4,736.0	28.17	243.82	4,359.6	-733.3	-1,438.2	1,357,570.25	3,255,058.11	40.311320	-104.585386
4,831.0	28.35	245.99	4,443.3	-752.3	-1,478.9	1,357,550.76	3,255,017.58	40.311268	-104.585532
4,925.0	28.07	245.19	4,526.1	-770.7	-1,519.4	1,357,531.98	3,254,977.31	40.311217	-104.585678
5,020.0	28.13	244.72	4,609.9	-789.6	-1,559.9	1,357,512.62	3,254,936.98	40.311165	-104.585823
5,114.0	27.97	245.24	4,692.9	-808.3	-1,600.0	1,357,493.51	3,254,897.12	40.311114	-104.585967
5,209.0	28.19	243.87	4,776.7	-827.5	-1,640.4	1,357,473.88	3,254,856.95	40.311061	-104.586111
5,304.0	28.00	244.79	4,860.5	-846.9	-1,680.7	1,357,454.08	3,254,816.83	40.311008	-104.586256
5,399.0	28.39	243.74	4,944.2	-866.4	-1,721.1	1,357,434.17	3,254,776.61	40.310955	-104.586401
5,493.0	28.19	242.72	5,027.0	-886.5	-1,760.9	1,357,413.70	3,254,737.04	40.310900	-104.586543
5,587.0	28.25	244.98	5,109.8	-906.1	-1,800.8	1,357,393.70	3,254,697.36	40.310846	-104.586686
5,682.0	28.07	243.43	5,193.6	-925.6	-1,841.2	1,357,373.78	3,254,657.20	40.310792	-104.586831
5,777.0	28.33	243.13	5,277.3	-945.8	-1,881.3	1,357,353.18	3,254,617.32	40.310737	-104.586975
5,872.0	28.08	243.39	5,361.0	-966.0	-1,921.4	1,357,332.56	3,254,577.43	40.310681	-104.587119
5,966.0	28.09	243.16	5,444.0	-985.9	-1,960.9	1,357,312.25	3,254,538.12	40.310627	-104.587260
6,061.0	27.89	242.82	5,527.9	-1,006.1	-2,000.6	1,357,291.60	3,254,498.61	40.310571	-104.587403
6,156.0	28.20	242.36	5,611.7	-1,026.7	-2,040.3	1,357,270.62	3,254,459.17	40.310515	-104.587545

Ensign

Survey Report - Geographic

Company:	Chevron DJ Basin	Local Co-ordinate Reference:	Well DRAKE 17N
Project:	SEC.17-T4N-R64W	TVD Reference:	Well @ 4764.5ft (P272 - RKB 28.5')
Site:	Drake Pad	MD Reference:	Well @ 4764.5ft (P272 - RKB 28.5')
Well:	DRAKE 17N	North Reference:	True
Wellbore:	Drake 17N	Survey Calculation Method:	Minimum Curvature
Design:	Drake 17N Final Surveys	Database:	US_EDM

Survey									
Measured Depth (ft)	Inclination (°)	Azimuth (°)	Vertical Depth (ft)	+N/-S (ft)	+E/-W (ft)	Map Northing (usft)	Map Easting (usft)	Latitude	Longitude
6,251.0	28.12	241.13	5,695.5	-1,047.9	-2,079.7	1,357,248.99	3,254,419.91	40.310456	-104.587687
6,346.0	27.75	241.02	5,779.4	-1,069.4	-2,118.7	1,357,227.07	3,254,381.18	40.310397	-104.587826
6,440.0	25.53	238.05	5,863.4	-1,090.7	-2,155.0	1,357,205.37	3,254,345.07	40.310339	-104.587957
6,535.0	19.30	229.48	5,951.2	-1,111.8	-2,184.4	1,357,184.00	3,254,315.95	40.310281	-104.588062
6,630.0	12.58	209.18	6,042.6	-1,131.1	-2,201.4	1,357,164.56	3,254,299.14	40.310228	-104.588123
6,724.0	11.75	178.15	6,134.6	-1,149.6	-2,206.1	1,357,145.99	3,254,294.65	40.310177	-104.588140
6,820.0	13.05	148.15	6,228.4	-1,168.6	-2,200.0	1,357,127.06	3,254,300.88	40.310125	-104.588118
6,914.0	18.70	126.69	6,318.9	-1,186.6	-2,182.3	1,357,109.20	3,254,318.78	40.310076	-104.588054
7,009.0	26.16	120.96	6,406.6	-1,206.5	-2,152.1	1,357,089.61	3,254,349.20	40.310021	-104.587946
7,104.0	33.04	117.29	6,489.2	-1,229.2	-2,111.1	1,357,067.36	3,254,390.46	40.309959	-104.587799
7,199.0	40.17	112.93	6,565.4	-1,253.1	-2,059.8	1,357,044.05	3,254,442.01	40.309893	-104.587615
7,294.0	47.44	108.24	6,634.0	-1,276.0	-1,998.2	1,357,021.76	3,254,503.79	40.309830	-104.587394
7,389.0	55.83	104.82	6,692.9	-1,297.0	-1,926.9	1,357,001.46	3,254,575.36	40.309773	-104.587138
7,484.0	63.04	102.55	6,741.2	-1,316.3	-1,847.4	1,356,983.01	3,254,654.99	40.309720	-104.586854
7,578.0	69.32	100.89	6,779.1	-1,333.7	-1,763.3	1,356,966.45	3,254,739.32	40.309672	-104.586552
7,672.0	74.17	97.00	6,808.5	-1,347.6	-1,675.1	1,356,953.54	3,254,827.60	40.309634	-104.586236
7,767.0	81.02	92.66	6,829.0	-1,355.3	-1,582.7	1,356,946.74	3,254,920.05	40.309613	-104.585905
7,862.0	92.10	90.51	6,834.6	-1,357.9	-1,488.1	1,356,945.11	3,255,014.71	40.309605	-104.585565
LPL - 1632' FSL & 452' FEL									
7,957.0	90.61	90.78	6,832.4	-1,359.0	-1,393.1	1,356,945.03	3,255,109.67	40.309603	-104.585225
8,052.0	90.68	89.66	6,831.3	-1,359.4	-1,298.1	1,356,945.65	3,255,204.66	40.309602	-104.584884
8,146.0	90.76	88.13	6,830.1	-1,357.6	-1,204.2	1,356,948.43	3,255,298.60	40.309607	-104.584547
8,241.0	91.20	88.24	6,828.5	-1,354.6	-1,109.2	1,356,952.43	3,255,393.50	40.309615	-104.584207
8,430.0	90.49	87.50	6,825.7	-1,347.5	-920.4	1,356,961.41	3,255,582.25	40.309634	-104.583530
8,525.0	90.22	87.52	6,825.1	-1,343.4	-825.5	1,356,966.52	3,255,677.11	40.309645	-104.583189
8,619.0	89.45	89.40	6,825.4	-1,340.9	-731.5	1,356,970.02	3,255,771.04	40.309652	-104.582852
8,714.0	89.65	90.25	6,826.2	-1,340.6	-636.5	1,356,971.29	3,255,866.02	40.309653	-104.582512
8,809.0	90.13	90.40	6,826.3	-1,341.1	-541.5	1,356,971.74	3,255,961.01	40.309652	-104.582171
8,904.0	89.53	89.85	6,826.6	-1,341.3	-446.5	1,356,972.52	3,256,056.01	40.309651	-104.581831
8,998.0	89.60	90.10	6,827.3	-1,341.3	-352.5	1,356,973.53	3,256,149.99	40.309651	-104.581493
9,093.0	89.50	90.29	6,828.1	-1,341.6	-257.5	1,356,974.20	3,256,244.98	40.309650	-104.581153
9,188.0	89.46	90.12	6,828.9	-1,342.0	-162.5	1,356,974.84	3,256,339.97	40.309649	-104.580812
9,282.0	89.48	89.93	6,829.8	-1,342.0	-68.5	1,356,975.78	3,256,433.96	40.309649	-104.580475
9,376.0	89.56	89.58	6,830.6	-1,341.6	25.5	1,356,977.15	3,256,527.94	40.309650	-104.580138
9,471.0	90.97	89.65	6,830.2	-1,341.0	120.4	1,356,978.78	3,256,622.92	40.309652	-104.579798
9,566.0	91.06	89.34	6,828.5	-1,340.1	215.4	1,356,980.60	3,256,717.88	40.309654	-104.579457
9,660.0	91.06	89.72	6,826.7	-1,339.3	309.4	1,356,982.34	3,256,811.85	40.309657	-104.579120
9,755.0	91.29	90.55	6,824.8	-1,339.6	404.4	1,356,983.11	3,256,906.82	40.309656	-104.578779
9,850.0	90.81	90.30	6,823.1	-1,340.3	499.4	1,356,983.39	3,257,001.80	40.309654	-104.578439
9,945.0	91.14	90.10	6,821.4	-1,340.6	594.4	1,356,984.04	3,257,096.78	40.309653	-104.578098
10,040.0	90.77	89.84	6,819.9	-1,340.6	689.3	1,356,985.07	3,257,191.75	40.309653	-104.577758
10,135.0	91.13	90.24	6,818.3	-1,340.6	784.3	1,356,985.99	3,257,286.73	40.309653	-104.577417
10,229.0	91.38	89.85	6,816.2	-1,340.7	878.3	1,356,986.89	3,257,380.70	40.309653	-104.577080
10,323.0	91.33	89.81	6,814.0	-1,340.4	972.3	1,356,988.15	3,257,474.66	40.309654	-104.576743
10,418.0	90.84	89.45	6,812.2	-1,339.8	1,067.3	1,356,989.75	3,257,569.63	40.309655	-104.576403
10,513.0	91.34	89.35	6,810.4	-1,338.8	1,162.2	1,356,991.73	3,257,664.58	40.309658	-104.576062
10,608.0	91.14	89.30	6,808.3	-1,337.7	1,257.2	1,356,993.83	3,257,759.53	40.309661	-104.575722
10,702.0	91.21	89.87	6,806.4	-1,337.0	1,351.2	1,356,995.49	3,257,853.50	40.309663	-104.575385
10,797.0	91.44	91.04	6,804.2	-1,337.8	1,446.2	1,356,995.72	3,257,948.46	40.309661	-104.575044
10,892.0	90.83	91.18	6,802.3	-1,339.6	1,541.1	1,356,994.86	3,258,043.44	40.309656	-104.574704
10,986.0	91.29	91.05	6,800.6	-1,341.4	1,635.1	1,356,994.01	3,258,137.41	40.309651	-104.574367
11,081.0	91.02	90.69	6,798.7	-1,342.9	1,730.1	1,356,993.55	3,258,232.39	40.309647	-104.574026
11,176.0	91.16	90.93	6,796.9	-1,344.2	1,825.0	1,356,993.19	3,258,327.37	40.309643	-104.573686
11,270.0	90.99	91.09	6,795.1	-1,345.9	1,919.0	1,356,992.51	3,258,421.34	40.309638	-104.573349
11,364.0	91.33	91.12	6,793.2	-1,347.7	2,013.0	1,356,991.67	3,258,515.32	40.309633	-104.573012

Ensign

Survey Report - Geographic

Company:	Chevron DJ Basin	Local Co-ordinate Reference:	Well DRAKE 17N
Project:	SEC.17-T4N-R64W	TVD Reference:	Well @ 4764.5ft (P272 - RKB 28.5')
Site:	Drake Pad	MD Reference:	Well @ 4764.5ft (P272 - RKB 28.5')
Well:	DRAKE 17N	North Reference:	True
Wellbore:	Drake 17N	Survey Calculation Method:	Minimum Curvature
Design:	Drake 17N Final Surveys	Database:	US_EDM

Survey									
Measured Depth (ft)	Inclination (°)	Azimuth (°)	Vertical Depth (ft)	+N/-S (ft)	+E/-W (ft)	Map Northing (usft)	Map Easting (usft)	Latitude	Longitude
11,459.0	90.87	90.61	6,791.4	-1,349.1	2,107.9	1,356,991.22	3,258,610.29	40.309630	-104.572671
11,553.0	91.11	90.40	6,789.8	-1,350.0	2,201.9	1,356,991.37	3,258,704.27	40.309627	-104.572334
11,648.0	91.29	90.76	6,787.8	-1,350.9	2,296.9	1,356,991.39	3,258,799.25	40.309625	-104.571994
11,743.0	91.16	91.01	6,785.7	-1,352.4	2,391.9	1,356,990.91	3,258,894.22	40.309621	-104.571653
11,838.0	91.07	90.67	6,783.9	-1,353.8	2,486.8	1,356,990.51	3,258,989.20	40.309617	-104.571313
11,932.0	91.13	90.14	6,782.1	-1,354.4	2,580.8	1,356,990.82	3,259,083.18	40.309615	-104.570976
12,027.0	91.23	90.33	6,780.1	-1,354.8	2,675.8	1,356,991.41	3,259,178.15	40.309614	-104.570635
12,122.0	91.36	90.34	6,778.0	-1,355.4	2,770.8	1,356,991.84	3,259,273.12	40.309612	-104.570295
12,217.0	91.44	90.45	6,775.7	-1,356.0	2,865.7	1,356,992.17	3,259,368.09	40.309610	-104.569954
12,311.0	91.09	89.89	6,773.6	-1,356.3	2,959.7	1,356,992.87	3,259,462.06	40.309610	-104.569617
12,405.0	91.09	90.62	6,771.8	-1,356.7	3,053.7	1,356,993.42	3,259,556.03	40.309608	-104.569280
12,499.0	91.26	90.35	6,769.9	-1,357.5	3,147.7	1,356,993.60	3,259,650.01	40.309606	-104.568943
12,594.0	91.15	90.33	6,767.9	-1,358.1	3,242.6	1,356,994.02	3,259,744.98	40.309605	-104.568603
12,689.0	91.13	89.77	6,766.0	-1,358.2	3,337.6	1,356,994.93	3,259,839.95	40.309604	-104.568262
12,784.0	90.76	90.54	6,764.4	-1,358.4	3,432.6	1,356,995.66	3,259,934.93	40.309604	-104.567922
12,878.0	91.20	90.28	6,762.8	-1,359.1	3,526.6	1,356,995.96	3,260,028.91	40.309602	-104.567585
12,973.0	91.45	90.18	6,760.6	-1,359.5	3,621.6	1,356,996.56	3,260,123.88	40.309601	-104.567244
13,068.0	91.62	89.96	6,758.1	-1,359.6	3,716.5	1,356,997.43	3,260,218.84	40.309600	-104.566904
13,163.0	91.61	90.11	6,755.4	-1,359.7	3,811.5	1,356,998.36	3,260,313.79	40.309600	-104.566563
13,258.0	91.67	90.49	6,752.7	-1,360.2	3,906.4	1,356,998.85	3,260,408.75	40.309599	-104.566223
13,352.0	91.74	89.80	6,749.9	-1,360.4	4,000.4	1,356,999.58	3,260,502.70	40.309598	-104.565886
13,448.0	91.53	89.66	6,747.1	-1,359.9	4,096.4	1,357,001.03	3,260,598.65	40.309599	-104.565542
13,542.0	91.67	89.96	6,744.5	-1,359.6	4,190.3	1,357,002.32	3,260,692.60	40.309600	-104.565205
13,637.0	91.76	90.27	6,741.7	-1,359.8	4,285.3	1,357,003.11	3,260,787.55	40.309599	-104.564864
13,732.0	91.59	89.58	6,738.9	-1,359.7	4,380.2	1,357,004.22	3,260,882.49	40.309600	-104.564524
13,827.0	91.86	89.88	6,736.0	-1,359.3	4,475.2	1,357,005.65	3,260,977.44	40.309601	-104.564183
13,921.0	90.00	90.80	6,734.5	-1,359.8	4,569.2	1,357,006.07	3,261,071.41	40.309599	-104.563846
14,016.0	90.08	90.49	6,734.4	-1,360.9	4,664.2	1,357,005.98	3,261,166.41	40.309596	-104.563506
14,111.0	90.46	90.64	6,734.0	-1,361.8	4,759.2	1,357,006.03	3,261,261.40	40.309594	-104.563165
14,206.0	90.20	90.86	6,733.4	-1,363.1	4,854.2	1,357,005.77	3,261,356.40	40.309590	-104.562824
14,300.0	89.87	90.00	6,733.4	-1,363.8	4,948.2	1,357,006.04	3,261,450.39	40.309588	-104.562487
14,395.0	89.96	90.67	6,733.5	-1,364.3	5,043.2	1,357,006.47	3,261,545.39	40.309587	-104.562147
14,490.0	89.88	90.05	6,733.7	-1,364.9	5,138.2	1,357,006.86	3,261,640.38	40.309585	-104.561806
14,585.0	90.34	90.68	6,733.5	-1,365.5	5,233.1	1,357,007.24	3,261,735.37	40.309583	-104.561466
14,679.0	89.76	90.44	6,733.4	-1,366.4	5,327.1	1,357,007.30	3,261,829.37	40.309581	-104.561129
14,868.0	90.01	90.01	6,733.8	-1,367.2	5,516.1	1,357,008.52	3,262,018.36	40.309579	-104.560451
14,963.0	90.24	90.39	6,733.6	-1,367.5	5,611.1	1,357,009.17	3,262,113.35	40.309578	-104.560110
15,058.0	90.19	90.11	6,733.2	-1,367.9	5,706.1	1,357,009.74	3,262,208.34	40.309576	-104.559770
15,153.0	90.42	90.51	6,732.7	-1,368.4	5,801.1	1,357,010.21	3,262,303.34	40.309575	-104.559429
15,247.0	90.02	90.31	6,732.3	-1,369.1	5,895.1	1,357,010.52	3,262,397.33	40.309573	-104.559092
15,342.0	90.12	90.60	6,732.2	-1,369.9	5,990.1	1,357,010.75	3,262,492.33	40.309571	-104.558751
15,437.0	90.16	90.51	6,732.0	-1,370.8	6,085.1	1,357,010.81	3,262,587.32	40.309568	-104.558411
15,532.0	89.92	90.27	6,731.9	-1,371.4	6,180.1	1,357,011.15	3,262,682.32	40.309566	-104.558070
15,626.0	90.00	89.95	6,732.0	-1,371.6	6,274.1	1,357,011.94	3,262,776.31	40.309566	-104.557733
15,721.0	90.03	89.87	6,732.0	-1,371.5	6,369.1	1,357,013.08	3,262,871.30	40.309566	-104.557392
15,815.0	90.15	90.12	6,731.8	-1,371.5	6,463.1	1,357,014.06	3,262,965.29	40.309566	-104.557055
15,910.0	90.02	89.93	6,731.7	-1,371.5	6,558.1	1,357,015.01	3,263,060.28	40.309566	-104.556715
16,004.0	89.81	90.18	6,731.8	-1,371.6	6,652.1	1,357,015.89	3,263,154.27	40.309566	-104.556378
16,099.0	90.29	89.81	6,731.7	-1,371.6	6,747.1	1,357,016.88	3,263,249.26	40.309566	-104.556037
16,193.0	89.75	91.39	6,731.7	-1,372.6	6,841.1	1,357,016.87	3,263,343.25	40.309563	-104.555700
16,288.0	90.13	90.60	6,731.8	-1,374.2	6,936.1	1,357,016.21	3,263,438.24	40.309558	-104.555359
16,383.0	90.35	90.69	6,731.4	-1,375.3	7,031.1	1,357,016.13	3,263,533.24	40.309555	-104.555019
16,477.0	90.14	91.31	6,731.0	-1,376.9	7,125.1	1,357,015.46	3,263,627.23	40.309551	-104.554682
16,572.0	90.21	90.87	6,730.7	-1,378.7	7,220.1	1,357,014.64	3,263,722.22	40.309546	-104.554341
16,667.0	90.22	90.44	6,730.4	-1,379.8	7,315.0	1,357,014.54	3,263,817.22	40.309543	-104.554001

Ensign

Survey Report - Geographic

Company: Chevron DJ Basin	Local Co-ordinate Reference: Well DRAKE 17N
Project: SEC.17-T4N-R64W	TVD Reference: Well @ 4764.5ft (P272 - RKB 28.5')
Site: Drake Pad	MD Reference: Well @ 4764.5ft (P272 - RKB 28.5')
Well: DRAKE 17N	North Reference: True
Wellbore: Drake 17N	Survey Calculation Method: Minimum Curvature
Design: Drake 17N Final Surveys	Database: US_EDM

Survey									
Measured Depth (ft)	Inclination (°)	Azimuth (°)	Vertical Depth (ft)	+N/-S (ft)	+E/-W (ft)	Map Northing (usft)	Map Easting (usft)	Latitude	Longitude
16,761.0	90.19	90.81	6,730.0	-1,380.8	7,409.0	1,357,014.49	3,263,911.21	40.309540	-104.553664
16,855.0	89.96	90.21	6,729.9	-1,381.7	7,503.0	1,357,014.63	3,264,005.21	40.309537	-104.553327
16,949.0	89.86	90.94	6,730.0	-1,382.6	7,597.0	1,357,014.66	3,264,099.20	40.309535	-104.552990
17,044.0	89.99	90.79	6,730.2	-1,384.1	7,692.0	1,357,014.21	3,264,194.20	40.309531	-104.552649
17,139.0	89.99	89.08	6,730.2	-1,384.0	7,787.0	1,357,015.30	3,264,289.18	40.309531	-104.552308
17,233.0	89.98	88.75	6,730.2	-1,382.2	7,881.0	1,357,018.06	3,264,383.14	40.309536	-104.551971
17,328.0	89.79	89.10	6,730.4	-1,380.4	7,976.0	1,357,020.82	3,264,478.09	40.309540	-104.551631
17,423.0	90.29	88.48	6,730.3	-1,378.4	8,071.0	1,357,023.82	3,264,573.04	40.309546	-104.551290
17,517.0	89.76	89.86	6,730.3	-1,377.0	8,164.9	1,357,026.15	3,264,667.01	40.309549	-104.550953
17,612.0	90.12	89.90	6,730.4	-1,376.8	8,259.9	1,357,027.34	3,264,761.99	40.309550	-104.550613
17,802.0	90.03	88.53	6,730.1	-1,374.2	8,449.9	1,357,031.91	3,264,951.93	40.309557	-104.549932
17,897.0	90.29	88.65	6,729.9	-1,371.9	8,544.9	1,357,035.23	3,265,046.86	40.309563	-104.549591
17,991.0	90.37	88.35	6,729.3	-1,369.4	8,638.9	1,357,038.67	3,265,140.79	40.309570	-104.549254
18,086.0	90.10	89.19	6,728.9	-1,367.4	8,733.8	1,357,041.69	3,265,235.74	40.309575	-104.548914
18,181.0	90.14	88.46	6,728.7	-1,365.4	8,828.8	1,357,044.62	3,265,330.69	40.309581	-104.548573
18,275.0	90.06	88.55	6,728.6	-1,363.0	8,922.8	1,357,048.05	3,265,424.62	40.309587	-104.548236
18,369.0	90.16	88.42	6,728.4	-1,360.5	9,016.8	1,357,051.51	3,265,518.56	40.309594	-104.547899
18,464.0	90.07	88.83	6,728.2	-1,358.2	9,111.7	1,357,054.77	3,265,613.49	40.309600	-104.547559
18,559.0	90.23	88.68	6,728.0	-1,356.2	9,206.7	1,357,057.82	3,265,708.44	40.309606	-104.547218
18,639.0	90.23	88.68	6,727.6	-1,354.3	9,286.7	1,357,060.50	3,265,788.39	40.309611	-104.546931
BHL - 1626' FSL & 205' FEL									

Design Annotations				
Measured Depth (ft)	Vertical Depth (ft)	Local Coordinates		Comment
		+N/-S (ft)	+E/-W (ft)	
7,862.0	6,834.6	-1,357.9	-1,488.1	LPL - 1632' FSL & 452' FEL
18,639.0	6,727.6	-1,354.3	9,286.7	BHL - 1626' FSL & 205' FEL

Checked By: _____ Approved By: _____ Date: _____