

Cement Post Job Report

Client: PDC Energy

Well Name: Drake 17N

API #: 05-123-51815

Job Date: January 15, 2024

Job Type: New Well - 5.5" Production String

Cement Company & Contact: EXERO Well Integrity -
Cheve Meyer 720-239-3819

EXERO

TREATMENT REPORT

CLIENT	WELL	RIG	JOB TYPE	THREAD TYPE	WELLHEAD CONNECTION
PDC Energy	Drake 17N	Patterson 272	Production	Buttress	5 1/2" HP Cement Head

WELL MD (FT)	WELL TVD (FT)	DEVIATION (DEG)	NUMBER OF STAGES	BHST (DEG)	BHCT (DEG)
18639	6728	90	1	245	245

PACKER/RETAINER/CIBP/DV TOOL DEPTHS (FT)	TOOL TYPE	TOP OF PERFS (FT)	BOTTOM OF PERFS (FT)	NUMBER OF HOLES
Packer @ 3449' / Wet Shoe Sub @ 18594'	PACKER			

CASING/TUBING/DP DETAILS								
STRING TYPE	GRADE	OD"	WT/FT	ID"	OH SIZE"	% EXCESS LEAD	% EXCESS TAIL	TOTAL DEPTH (FT)
Surface		9.625	36	8.921	13.50			1743
Production	P110	5.5	20	4.778	8.5	0	0	18625
MAXIMUM CASING/TUBING/DP PSI					MAXIMUM ANNULAR PSI			

Mud Type	OBM	Rotate Y,N	No	Circulation Data				Water Requirements (bbls)		
Mud ppg	10.7	Rate (rpm)		Circulate Time (hrs)		2	Spacers		160	
Flow Temp		Torque Val.		Circulation Rate (bpm)		10.7	PSI	1600	Stage 1 Lead	112
Vis. Sec/qt		Time (hr)		Full Circulation ? (Y,N,P)		Yes		Stage 1 Tail	258	
PV (cP)		Pipe Reciprocation		Gas Present (Y,N)		No	Units	325	Stage 2 Lead	
Yield Pt		Recip Y,N	No	Centralizers/Plugs				Stage 2 Tail		
10 sec gel		Stroke (ft)		Quantity & Type		Customer Provided		Displacement	413	
10 min gel		Recip time		Top Plug/Type		Customer Provided		Wash up	20	
30 min gel		Stuck ?		Bottom Plug/Type		Customer Provided		Total + 10% Safety	1059	

Preflush & Spacers		Stage 1 Lead - Class G		Stage 1 Tail - Class G		Stage 2 Lead		Stage 2 Tail		Displacement	
Spacer 1	Spacer	Density	12.9	Density	13.7	Density		Density		Fluid Type	Water
Density	12	Sacks	1276	Sacks	1631	Sacks		Sacks		Dens. ppg	8.33
Volume	160	Vol/bbls	256.8	Vol/bbls	398.0	Vol/bbls	0.0	Vol/bbls	0.0	Vol. bbl	413
Rate	9	Rate	10.5	Rate	10.5	Rate		Rate		Rate bpm	10
Spacer 2		Yield	1.13	Yield	1.37	Yield		Yield		Clay Stay?	No
Density		Gal/Sk	3.68	Gal/Sk	6.63	Gal/Sk		Gal/Sk		Biocide ?	Yes
Volume		% Excess	0	% Excess	0	% Excess		% Excess		Slow @ bbl	393
Rate		TOL (ft)	2400	TOT (ft)	8674	TOL (ft)		TOT (ft)		Bump PSI	2800

Final Displacement (bbls)	413
Bump Plug?	Yes
Final Bump Pressure (psi)	3300
Full Returns throughout job?	Full
Vol. away/Time when returns lost	
Vol. away when returns were regained	
Spacer to Surface?	Yes
Spacer volume returned (bbls)	50
Cement to surface?	No
Cement volume to surface stage 1	0
Cement volume to surface stage 2	

Surface Top Out Details-Pumped		Job Summary & Chems Used	
Cement Type		MFC 47 (gal)	70
Dens. ppg		MFC 67 (gal)	168
Sacks qty		Defoamer (gal)	25
Gal/sk		Biocide (gal)	15
Yield		Corr. Inhib (gal)	
Lbs. of chloride used		Fiber (lbs)	290
Top out pipe used ?		Chloride (lbs)	
Feet of top out pipe		Retarder (lbs)	
Annulus holding?		Clay Stay (gal)	
Sodium Silicate Used		Other	

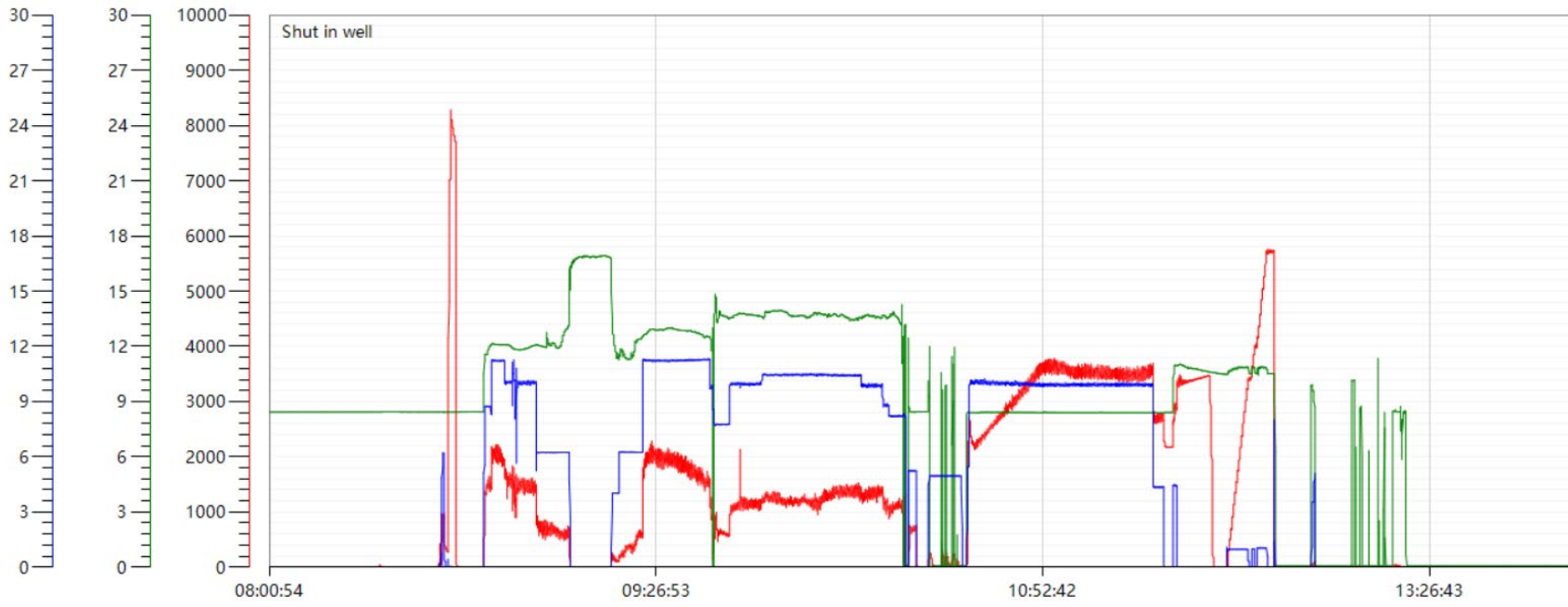
JOB LOG

CLIENT	WELL	RIG	JOB TYPE	START DATE	Ambient Conditions		
PDC Energy	Drake 17N	Patterson 272	Production	1/15/2024	Temp / Hum / Air Press -4 Deg F / 78% / 25.03 in		
DATE (dd/mm)	TIME (hh:mm)	DENSITY (ppg)	RATE (bpm)	VOL (bbl)	TOTAL VOL.	PRESSURE	TREATMENT COMMENTS
1/14/2024	5:00:00 PM						CREW CALLED OUT FOR ON LOCATION TIME OF 03:00 01/15/2024
1/14/2024	6:00:00 PM						CREW ARRIVES AT CUSTOMER LOCATION
1/15/2024	3:00:00 AM						WAITING ON RIG TO FINISH RUNNING CASING
1/15/2024	6:00:00 AM						RIG UP ALL IRON AND HOSES
1/15/2024	6:00:00 AM						RIG CIRCULATING
1/15/2024	8:00:00 AM						SAFETY MEETING WITH EXERO CREW, RIG CREW, TOOL REP, AND CUSTOMER REP
1/15/2024	8:36:00 AM	8.34	6.0	3	3	850	TIE INTO WELL. FILL LINES WITH 3 BBLS FRESH WATER
1/15/2024	8:38:00 AM					8000	PRESSURE TEST PUMP AND LINES
1/15/2024	8:43:00 AM						LOAD BOTTOM PLUG
1/15/2024	8:47:00 AM	12	10.0	0	0	1570	BEGIN PUMPING 12 PPG SPACER + SURFACTANT + FIBER
1/15/2024	8:52:00 AM	12	10.0	50	50	1600	PUMPING SPACER
1/15/2024	8:57:00 AM	12	10.0	50	100	1700	PUMPING SPACER
1/15/2024	9:00:00 AM	12	6.0	60	160	650	PUMPING SPACER
1/15/2024	9:00:00 AM	12.9	6.0	0	0	600	BEGIN PUMPING 12.9 PPG LEAD CEMENT, DENSITY VERIFIED WITH PRESSURIZED MUD SCALE
1/15/2024	9:00:00 AM	12.9	0.0	0	0	0	POWDER OUT WHILE BATCHING UP LEAD. SHUT DOWN PUMP TO CORRECT ISSUE
1/15/2024	9:13:00 AM	12.9	7.2	0	0	2000	BACK ONLINE PUMPING LEAD CEMENT
1/15/2024	9:20:00 AM	12.9	11.3	50	50	2000	PUMPING LEAD CEMENT
1/15/2024	9:25:00 AM	12.9	11.0	50	100	1700	PUMPING LEAD CEMENT
1/15/2024	9:29:00 AM	12.9	11.0	50	150	1630	PUMPING LEAD CEMENT
1/15/2024	9:34:00 AM	12.9	11.0	50	200	1600	PUMPING LEAD CEMENT
1/15/2024	9:39:00 AM	12.9	8.0	56.8	256.8	1580	PUMPING LEAD CEMENT
1/15/2024	9:39:00 AM	13.7	10.0	0	0	590	BEGIN PUMPING 13.7 PPG TAIL CEMENT, DENSITY VERIFIED WITH PRESSURIZED MUD SCALE
1/15/2024	9:45:00 AM	13.7	10.0	50	50	1050	PUMPING TAIL CEMENT
1/15/2024	9:50:00 AM	13.7	10.5	50	100	1270	PUMPING TAIL CEMENT
1/15/2024	9:55:00 AM	13.7	10.5	50	150	1200	PUMPING TAIL CEMENT
1/15/2024	9:59:00 AM	13.7	10.5	50	200	1180	PUMPING TAIL CEMENT
1/15/2024	10:05:00 AM	13.7	10.5	50	250	1370	PUMPING TAIL CEMENT
1/15/2024	10:10:00 AM	13.7	10.5	50	300	1400	PUMPING TAIL CEMENT
1/15/2024	10:15:00 AM	13.7	10.5	50	350	1410	PUMPING TAIL CEMENT
1/15/2024	10:19:00 AM	13.7	8.0	48	398	780	PUMPING TAIL CEMENT
1/15/2024	10:19:00 AM	8.34	6.0	8	8	750	PUMP 8 BBLS SUGAR WATER FOR WET SHOE
1/15/2024	10:22:00 AM						SHUT DOWN, WASH UP PUMP
1/15/2024	10:33:00 AM	8.34	10.0	0	0	2700	DROP TOP PLUG, BEGIN WATER + BIOCIDES DISPLACEMENT. 2 BBLS SUGAR WATER BEHIND
1/15/2024	10:39:00 AM	8.34	10.0	50	50	2580	PUMPING DISPLACEMENT
1/15/2024	10:45:00 AM	8.34	10.0	50	100	3100	PUMPING DISPLACEMENT
1/15/2024	10:50:00 AM	8.34	10.0	50	150	3570	PUMPING DISPLACEMENT
1/15/2024	10:55:00 AM	8.34	10.0	50	200	3560	PUMPING DISPLACEMENT
1/15/2024	11:00:00 AM	8.34	10.0	50	250	3630	PUMPING DISPLACEMENT
1/15/2024	11:06:00 AM	8.34	10.0	50	300	3480	PUMPING DISPLACEMENT
1/15/2024	11:11:00 AM	8.34	10.0	50	350	3590	PUMPING DISPLACEMENT. SPACER TO SURFACE AT 363 BBLS PUMPED. 50 BBLS TO SURFACE
1/15/2024	11:15:00 AM	8.34	10.0	43	393	3600	PUMPING DISPLACEMENT. LAST 15 BBLS PUMPED KCL BRINE DISPLACEMENT
1/15/2024	11:21:00 AM	8.34	4.5	20	413	2800	PUMPING DISPLACEMENT
1/15/2024	11:21:00 AM					3300	LAND PLUG. FCP - 2800 PSI, BUMPED TO 3300 PSI
1/15/2024	11:26:00 AM						CHECK FLOATS. FLOATS HELD, 5.5 BBLS BACK
1/15/2024	11:30:00 AM	8.34	1.0			5700	SET PACKER AS PER TOOL REP INSTRUCTIONS
1/15/2024	12:24:00 PM						RELEASE PRESSURE
1/15/2024	12:35:00 PM	8.34					FLUSH STACK
1/15/2024	12:50:00 PM						RIG DOWN ALL IRON AND HOSES
1/15/2024	2:00:00 PM						DEPART CUSTOMER LOCATION

Drake 17N Production Pump Chart – Pressure / Rate / Density

Chart Report

— pressure1 psi — density backup lbs/gal — Combined Rate





Centralizer Depths

Well Name: Drake 17N

Production, Set Depth: 18,625.0ftKB

API 05123518150000		Surface Legal Location NWSW 17 4N 64W		Field Name Wattenberg		State CO		Well Configuration Type Horizontal			
Ground Elevation (ft) 4,736.00	Original KB Elevation (ft) 4,764.50	KB-Ground Distance (ft) 28.50	Spud Date 1/12/2024 04:00	Rig Release Date 1/15/2024 17:00	On Production Date	Abandon Date					

Casing Run Tally												
Run #	Ref #	Item Des	OD (in)	Wt (lb/ft)	Grade	Run?	Len (ft)	Centralized?	Ext Jwry	Connections	Top (ftKB)	Cum Len (ft)
7	1	Casing Joints	5 1/2	20.00	P-110	Yes	41.61	Yes			18,547.4	77.61
9	3	Casing Joints	5 1/2	20.00	P-110	Yes	42.42	Yes			18,462.7	162.30
11	5	Casing Joints	5 1/2	20.00	P-110	Yes	41.05	Yes			18,379.1	245.86
13	7	Casing Joints	5 1/2	20.00	P-110	Yes	39.58	Yes			18,295.1	329.86
15	9	Casing Joints	5 1/2	20.00	P-110	Yes	43.15	Yes			18,210.8	414.25
17		Marker Joint	5 1/2	20.00	P-110	Yes	20.92	Yes			18,146.4	478.62
19	12	Casing Joints	5 1/2	20.00	P-110	Yes	42.24	Yes			18,060.1	564.94
21	14	Casing Joints	5 1/2	20.00	P-110	Yes	42.15	Yes			17,974.9	650.07
23	16	Casing Joints	5 1/2	20.00	P-110	Yes	42.69	Yes			17,889.8	735.24
25	18	Casing Joints	5 1/2	20.00	P-110	Yes	39.75	Yes			17,807.2	817.76
27	20	Casing Joints	5 1/2	20.00	P-110	Yes	40.05	Yes			17,723.3	901.70
29	22	Casing Joints	5 1/2	20.00	P-110	Yes	42.10	Yes			17,640.5	984.50
31	24	Casing Joints	5 1/2	20.00	P-110	Yes	42.67	Yes			17,552.5	1,072.51
33	26	Casing Joints	5 1/2	20.00	P-110	Yes	42.31	Yes			17,468.2	1,156.76
35	28	Casing Joints	5 1/2	20.00	P-110	Yes	41.92	Yes			17,383.8	1,241.21
37	30	Casing Joints	5 1/2	20.00	P-110	Yes	35.12	Yes			17,307.1	1,317.91
39	32	Casing Joints	5 1/2	20.00	P-110	Yes	38.76	Yes			17,227.8	1,397.24
41	34	Casing Joints	5 1/2	20.00	P-110	Yes	40.29	Yes			17,144.3	1,480.74
43	36	Casing Joints	5 1/2	20.00	P-110	Yes	44.84	Yes			17,056.8	1,568.16
45	38	Casing Joints	5 1/2	20.00	P-110	Yes	43.01	Yes			16,969.4	1,655.59
47	40	Casing Joints	5 1/2	20.00	P-110	Yes	41.48	Yes			16,884.9	1,740.07
49	42	Casing Joints	5 1/2	20.00	P-110	Yes	42.69	Yes			16,798.0	1,827.01
51	44	Casing Joints	5 1/2	20.00	P-110	Yes	37.87	Yes			16,718.6	1,906.45
53	46	Casing Joints	5 1/2	20.00	P-110	Yes	38.82	Yes			16,642.2	1,982.85
55	48	Casing Joints	5 1/2	20.00	P-110	Yes	38.65	Yes			16,559.9	2,065.11
57	50	Casing Joints	5 1/2	20.00	P-110	Yes	43.68	Yes			16,474.5	2,150.53
59	52	Casing Joints	5 1/2	20.00	P-110	Yes	44.29	Yes			16,386.8	2,238.16
61	54	Casing Joints	5 1/2	20.00	P-110	Yes	42.25	Yes			16,300.4	2,324.62
63	56	Casing Joints	5 1/2	20.00	P-110	Yes	44.90	Yes			16,213.1	2,411.89
65	58	Casing Joints	5 1/2	20.00	P-110	Yes	41.30	Yes			16,127.4	2,497.64
67	60	Casing Joints	5 1/2	20.00	P-110	Yes	44.27	Yes			16,038.8	2,586.16



Centralizer Depths

Well Name: Drake 17N

Production, Set Depth: 18,625.0ftKB

API 0512351815000		Surface Legal Location NWSW 17 4N 64W		Field Name Wattenberg		State CO		Well Configuration Type Horizontal			
Ground Elevation (ft) 4,736.00	Original KB Elevation (ft) 4,764.50	KB-Ground Distance (ft) 28.50	Spud Date 1/12/2024 04:00	Rig Release Date 1/15/2024 17:00	On Production Date	Abandon Date					

Casing Run Tally

Run #	Ref #	Item Des	OD (in)	Wt (lb/ft)	Grade	Run?	Len (ft)	Centralized?	Ext Jwry	Connections	Top (ftKB)	Cum Len (ft)
69	62	Casing Joints	5 1/2	20.00	P-110	Yes	44.47	Yes			15,949.9	2,675.09
71	64	Casing Joints	5 1/2	20.00	P-110	Yes	35.94	Yes			15,870.9	2,754.06
73	66	Casing Joints	5 1/2	20.00	P-110	Yes	44.45	Yes			15,781.7	2,843.31
75	68	Casing Joints	5 1/2	20.00	P-110	Yes	44.26	Yes			15,693.2	2,931.85
77	70	Casing Joints	5 1/2	20.00	P-110	Yes	44.82	Yes			15,604.4	3,020.56
79	72	Casing Joints	5 1/2	20.00	P-110	Yes	44.47	Yes			15,517.3	3,107.75
81	74	Casing Joints	5 1/2	20.00	P-110	Yes	45.30	Yes			15,427.5	3,197.55
83	76	Casing Joints	5 1/2	20.00	P-110	Yes	44.50	Yes			15,338.7	3,286.31
85	78	Casing Joints	5 1/2	20.00	P-110	Yes	43.17	Yes			15,250.7	3,374.29
87	80	Casing Joints	5 1/2	20.00	P-110	Yes	44.48	Yes			15,162.0	3,463.04
89	82	Casing Joints	5 1/2	20.00	P-110	Yes	44.82	Yes			15,075.6	3,549.39
91	84	Casing Joints	5 1/2	20.00	P-110	Yes	44.80	Yes			14,986.3	3,638.66
93	86	Casing Joints	5 1/2	20.00	P-110	Yes	44.34	Yes			14,900.4	3,724.65
95	88	Casing Joints	5 1/2	20.00	P-110	Yes	44.27	Yes			14,811.8	3,813.18
97	90	Casing Joints	5 1/2	20.00	P-110	Yes	44.28	Yes			14,724.9	3,900.07
99	92	Casing Joints	5 1/2	20.00	P-110	Yes	44.25	Yes			14,636.4	3,988.59
101	94	Casing Joints	5 1/2	20.00	P-110	Yes	41.63	Yes			14,550.5	4,074.53
103	96	Casing Joints	5 1/2	20.00	P-110	Yes	44.45	Yes			14,461.7	4,163.35
105	98	Casing Joints	5 1/2	20.00	P-110	Yes	44.32	Yes			14,373.0	4,252.02
107	100	Casing Joints	5 1/2	20.00	P-110	Yes	44.45	Yes			14,284.3	4,340.74
109	102	Casing Joints	5 1/2	20.00	P-110	Yes	41.32	Yes			14,200.9	4,424.07
111	104	Casing Joints	5 1/2	20.00	P-110	Yes	44.81	Yes			14,112.6	4,512.42
113	106	Casing Joints	5 1/2	20.00	P-110	Yes	44.92	Yes			14,023.4	4,601.64
115	108	Casing Joints	5 1/2	20.00	P-110	Yes	44.47	Yes			13,936.7	4,688.33
117	110	Casing Joints	5 1/2	20.00	P-110	Yes	44.80	Yes			13,847.6	4,777.38
119	112	Casing Joints	5 1/2	20.00	P-110	Yes	44.40	Yes			13,758.9	4,866.06
121	114	Casing Joints	5 1/2	20.00	P-110	Yes	44.81	Yes			13,669.8	4,955.24
123	116	Casing Joints	5 1/2	20.00	P-110	Yes	44.23	Yes			13,581.2	5,043.84
125	118	Casing Joints	5 1/2	20.00	P-110	Yes	44.29	Yes			13,492.0	5,132.96
127	120	Casing Joints	5 1/2	20.00	P-110	Yes	41.65	Yes			13,408.4	5,216.61
129	122	Casing Joints	5 1/2	20.00	P-110	Yes	44.29	Yes			13,321.3	5,303.75



Centralizer Depths

Well Name: Drake 17N

Production, Set Depth: 18,625.0ftKB

API 0512351815000		Surface Legal Location NWSW 17 4N 64W		Field Name Wattenberg		State CO		Well Configuration Type Horizontal			
Ground Elevation (ft) 4,736.00	Original KB Elevation (ft) 4,764.50	KB-Ground Distance (ft) 28.50	Spud Date 1/12/2024 04:00	Rig Release Date 1/15/2024 17:00	On Production Date	Abandon Date					

Casing Run Tally												
Run #	Ref #	Item Des	OD (in)	Wt (lb/ft)	Grade	Run?	Len (ft)	Centralized?	Ext Jwry	Connections	Top (ftKB)	Cum Len (ft)
131		Marker Joint	5 1/2	20.00	P-110	Yes	19.34	Yes			13,260.2	5,364.76
133	125	Casing Joints	5 1/2	20.00	P-110	Yes	41.00	Yes			13,175.0	5,450.03
135	127	Casing Joints	5 1/2	20.00	P-110	Yes	37.46	Yes			13,093.3	5,531.75
137	129	Casing Joints	5 1/2	20.00	P-110	Yes	42.65	Yes			13,009.3	5,615.70
139	131	Casing Joints	5 1/2	20.00	P-110	Yes	41.68	Yes			12,923.4	5,701.59
141	133	Casing Joints	5 1/2	20.00	P-110	Yes	43.55	Yes			12,835.7	5,789.34
143	135	Casing Joints	5 1/2	20.00	P-110	Yes	44.25	Yes			12,746.9	5,878.07
145	137	Casing Joints	5 1/2	20.00	P-110	Yes	44.48	Yes			12,658.3	5,966.69
147	139	Casing Joints	5 1/2	20.00	P-110	Yes	43.65	Yes			12,570.2	6,054.81
149	141	Casing Joints	5 1/2	20.00	P-110	Yes	41.97	Yes			12,484.1	6,140.93
151	143	Casing Joints	5 1/2	20.00	P-110	Yes	42.17	Yes			12,399.3	6,225.74
153	145	Casing Joints	5 1/2	20.00	P-110	Yes	41.15	Yes			12,312.7	6,312.33
155	147	Casing Joints	5 1/2	20.00	P-110	Yes	44.45	Yes			12,224.9	6,400.08
157	149	Casing Joints	5 1/2	20.00	P-110	Yes	44.48	Yes			12,136.2	6,488.76
159	151	Casing Joints	5 1/2	20.00	P-110	Yes	44.30	Yes			12,047.7	6,577.34
161	153	Casing Joints	5 1/2	20.00	P-110	Yes	44.51	Yes			11,958.3	6,666.70
163	155	Casing Joints	5 1/2	20.00	P-110	Yes	41.64	Yes			11,872.5	6,752.46
165	157	Casing Joints	5 1/2	20.00	P-110	Yes	44.25	Yes			11,784.8	6,840.16
167	159	Casing Joints	5 1/2	20.00	P-110	Yes	44.28	Yes			11,695.7	6,929.26
169	161	Casing Joints	5 1/2	20.00	P-110	Yes	43.26	Yes			11,608.2	7,016.79
171	163	Casing Joints	5 1/2	20.00	P-110	Yes	41.93	Yes			11,525.8	7,099.16
173	165	Casing Joints	5 1/2	20.00	P-110	Yes	42.64	Yes			11,441.6	7,183.42
175	167	Casing Joints	5 1/2	20.00	P-110	Yes	42.52	Yes			11,357.7	7,267.29
177	169	Casing Joints	5 1/2	20.00	P-110	Yes	44.01	Yes			11,271.5	7,353.48
179	171	Casing Joints	5 1/2	20.00	P-110	Yes	43.91	Yes			11,184.0	7,440.96
181	173	Casing Joints	5 1/2	20.00	P-110	Yes	43.24	Yes			11,098.5	7,526.46
183	175	Casing Joints	5 1/2	20.00	P-110	Yes	43.40	Yes			11,011.5	7,613.52
185	177	Casing Joints	5 1/2	20.00	P-110	Yes	40.67	Yes			10,927.4	7,697.60
187	179	Casing Joints	5 1/2	20.00	P-110	Yes	41.24	Yes			10,843.8	7,781.24
189	181	Casing Joints	5 1/2	20.00	P-110	Yes	40.00	Yes			10,766.4	7,858.59
191	183	Casing Joints	5 1/2	20.00	P-110	Yes	43.58	Yes			10,679.9	7,945.10



Centralizer Depths

Well Name: Drake 17N

Production, Set Depth: 18,625.0ftKB

API 05123518150000		Surface Legal Location NWSW 17 4N 64W		Field Name Wattenberg		State CO		Well Configuration Type Horizontal			
Ground Elevation (ft) 4,736.00	Original KB Elevation (ft) 4,764.50	KB-Ground Distance (ft) 28.50	Spud Date 1/12/2024 04:00	Rig Release Date 1/15/2024 17:00	On Production Date	Abandon Date					

Casing Run Tally

Run #	Ref #	Item Des	OD (in)	Wt (lb/ft)	Grade	Run?	Len (ft)	Centralized?	Ext Jwry	Connections	Top (ftKB)	Cum Len (ft)
193	185	Casing Joints	5 1/2	20.00	P-110	Yes	40.34	Yes			10,595.9	8,029.10
195	187	Casing Joints	5 1/2	20.00	P-110	Yes	40.10	Yes			10,512.8	8,112.20
197	189	Casing Joints	5 1/2	20.00	P-110	Yes	42.52	Yes			10,427.5	8,197.51
199	191	Casing Joints	5 1/2	20.00	P-110	Yes	42.16	Yes			10,341.3	8,283.68
201	193	Casing Joints	5 1/2	20.00	P-110	Yes	43.15	Yes			10,254.6	8,370.44
203	195	Casing Joints	5 1/2	20.00	P-110	Yes	43.44	Yes			10,167.5	8,457.47
205	197	Casing Joints	5 1/2	20.00	P-110	Yes	41.44	Yes			10,081.3	8,543.73
207	199	Casing Joints	5 1/2	20.00	P-110	Yes	44.85	Yes			9,992.4	8,632.59
209	201	Casing Joints	5 1/2	20.00	P-110	Yes	43.33	Yes			9,905.6	8,719.40
211	203	Casing Joints	5 1/2	20.00	P-110	Yes	44.30	Yes			9,818.5	8,806.52
213	205	Casing Joints	5 1/2	20.00	P-110	Yes	42.75	Yes			9,736.3	8,888.69
215	207	Casing Joints	5 1/2	20.00	P-110	Yes	41.60	Yes			9,652.1	8,972.91
217	209	Casing Joints	5 1/2	20.00	P-110	Yes	44.81	Yes			9,563.0	9,061.99
219	211	Casing Joints	5 1/2	20.00	P-110	Yes	43.01	Yes			9,475.7	9,149.28
221	213	Casing Joints	5 1/2	20.00	P-110	Yes	39.94	Yes			9,391.5	9,233.50
223	215	Casing Joints	5 1/2	20.00	P-110	Yes	43.80	Yes			9,306.9	9,318.10
225	217	Casing Joints	5 1/2	20.00	P-110	Yes	43.19	Yes			9,221.3	9,403.69
227	219	Casing Joints	5 1/2	20.00	P-110	Yes	44.50	Yes			9,132.5	9,492.54
229	221	Casing Joints	5 1/2	20.00	P-110	Yes	44.50	Yes			9,043.6	9,581.40
231	223	Casing Joints	5 1/2	20.00	P-110	Yes	44.43	Yes			8,954.9	9,670.10
235	226	Casing Joints	5 1/2	20.00	P-110	Yes	44.48	Yes			8,821.5	9,803.50
237	228	Casing Joints	5 1/2	20.00	P-110	Yes	42.76	Yes			8,737.0	9,888.01
239	230	Casing Joints	5 1/2	20.00	P-110	Yes	44.22	Yes			8,650.3	9,974.68
241	232	Casing Joints	5 1/2	20.00	P-110	Yes	44.81	Yes			8,561.0	10,063.96
243	234	Casing Joints	5 1/2	20.00	P-110	Yes	41.05	Yes			8,477.8	10,147.16
245	236	Casing Joints	5 1/2	20.00	P-110	Yes	41.14	Yes			8,394.3	10,230.73
247	238	Casing Joints	5 1/2	20.00	P-110	Yes	44.46	Yes			8,305.3	10,319.66
249	240	Casing Joints	5 1/2	20.00	P-110	Yes	41.87	Yes			8,218.7	10,406.34
251	242	Casing Joints	5 1/2	20.00	P-110	Yes	44.27	Yes			8,130.1	10,494.86
253	244	Casing Joints	5 1/2	20.00	P-110	Yes	44.12	Yes			8,041.7	10,583.30
255	246	Casing Joints	5 1/2	20.00	P-110	Yes	42.10	Yes			7,957.4	10,667.63



Centralizer Depths

Well Name: Drake 17N

Production, Set Depth: 18,625.0ftKB

API 05123518150000		Surface Legal Location NWSW 17 4N 64W		Field Name Wattenberg		State CO		Well Configuration Type Horizontal			
Ground Elevation (ft) 4,736.00		Original KB Elevation (ft) 4,764.50		KB-Ground Distance (ft) 28.50		Spud Date 1/12/2024 04:00		Rig Release Date 1/15/2024 17:00		On Production Date Abandon Date	

Casing Run Tally

Run #	Ref #	Item Des	OD (in)	Wt (lb/ft)	Grade	Run?	Len (ft)	Centralized?	Ext Jwry	Connections	Top (ftKB)	Cum Len (ft)
257		Marker Joint E	5 1/2	20.00	P-110	Yes	10.00	Yes			7,905.6	10,719.40
258	248	Casing Joints	5 1/2	20.00	P-110	Yes	38.70	Yes			7,866.9	10,758.10
259	249	Casing Joints	5 1/2	20.00	P-110	Yes	42.64	Yes			7,824.3	10,800.74
260	250	Casing Joints	5 1/2	20.00	P-110	Yes	44.30	Yes			7,780.0	10,845.04
261	251	Casing Joints	5 1/2	20.00	P-110	Yes	34.71	Yes			7,745.3	10,879.75
262	252	Casing Joints	5 1/2	20.00	P-110	Yes	42.75	Yes			7,702.5	10,922.50
263	253	Casing Joints	5 1/2	20.00	P-110	Yes	37.33	Yes			7,665.2	10,959.83
264	254	Casing Joints	5 1/2	20.00	P-110	Yes	39.01	Yes			7,626.2	10,998.84
265	255	Casing Joints	5 1/2	20.00	P-110	Yes	42.78	Yes			7,583.4	11,041.62
266	256	Casing Joints	5 1/2	20.00	P-110	Yes	41.52	Yes			7,541.9	11,083.14
267	257	Casing Joints	5 1/2	20.00	P-110	Yes	42.16	Yes			7,499.7	11,125.30
268	258	Casing Joints	5 1/2	20.00	P-110	Yes	40.51	Yes			7,459.2	11,165.81
269	259	Casing Joints	5 1/2	20.00	P-110	Yes	38.53	Yes			7,420.7	11,204.34
270	260	Casing Joints	5 1/2	20.00	P-110	Yes	44.46	Yes			7,376.2	11,248.80
271	261	Casing Joints	5 1/2	20.00	P-110	Yes	35.13	Yes			7,341.1	11,283.93
272	262	Casing Joints	5 1/2	20.00	P-110	Yes	43.42	Yes			7,297.7	11,327.35
273	263	Casing Joints	5 1/2	20.00	P-110	Yes	42.55	Yes			7,255.1	11,369.90
274	264	Casing Joints	5 1/2	20.00	P-110	Yes	42.66	Yes			7,212.4	11,412.56
275	265	Casing Joints	5 1/2	20.00	P-110	Yes	39.28	Yes			7,173.2	11,451.84
276	266	Casing Joints	5 1/2	20.00	P-110	Yes	43.17	Yes			7,130.0	11,495.01
277	267	Casing Joints	5 1/2	20.00	P-110	Yes	43.01	Yes			7,087.0	11,538.02
278	268	Casing Joints	5 1/2	20.00	P-110	Yes	39.95	Yes			7,047.0	11,577.97
279	269	Casing Joints	5 1/2	20.00	P-110	Yes	41.91	Yes			7,005.1	11,619.88
280	270	Casing Joints	5 1/2	20.00	P-110	Yes	42.20	Yes			6,962.9	11,662.08
281	271	Casing Joints	5 1/2	20.00	P-110	Yes	44.46	Yes			6,918.5	11,706.54
282	272	Casing Joints	5 1/2	20.00	P-110	Yes	43.45	Yes			6,875.0	11,749.99
283	273	Casing Joints	5 1/2	20.00	P-110	Yes	44.80	Yes			6,830.2	11,794.79
284	274	Casing Joints	5 1/2	20.00	P-110	Yes	44.00	Yes			6,786.2	11,838.79
285	275	Casing Joints	5 1/2	20.00	P-110	Yes	40.91	Yes			6,745.3	11,879.70
286	276	Casing Joints	5 1/2	20.00	P-110	Yes	44.48	Yes			6,700.8	11,924.18
287	277	Casing Joints	5 1/2	20.00	P-110	Yes	43.27	Yes			6,657.6	11,967.45



Centralizer Depths

Well Name: Drake 17N

Production, Set Depth: 18,625.0ftKB

API 0512351815000		Surface Legal Location NWSW 17 4N 64W		Field Name Wattenberg		State CO		Well Configuration Type Horizontal			
Ground Elevation (ft) 4,736.00	Original KB Elevation (ft) 4,764.50	KB-Ground Distance (ft) 28.50	Spud Date 1/12/2024 04:00	Rig Release Date 1/15/2024 17:00	On Production Date	Abandon Date					

Casing Run Tally

Run #	Ref #	Item Des	OD (in)	Wt (lb/ft)	Grade	Run?	Len (ft)	Centralized?	Ext Jwly	Connections	Top (ftKB)	Cum Len (ft)
288	278	Casing Joints	5 1/2	20.00	P-110	Yes	43.65	Yes			6,613.9	12,011.10
289	279	Casing Joints	5 1/2	20.00	P-110	Yes	41.32	Yes			6,572.6	12,052.42
290	280	Casing Joints	5 1/2	20.00	P-110	Yes	44.31	Yes			6,528.3	12,096.73
291	281	Casing Joints	5 1/2	20.00	P-110	Yes	44.26	Yes			6,484.0	12,140.99
292	282	Casing Joints	5 1/2	20.00	P-110	Yes	42.59	Yes			6,441.4	12,183.58
293		Marker Joint F	5 1/2	20.00	P-110	Yes	9.99	Yes			6,431.4	12,193.57
294	283	Casing Joints	5 1/2	20.00	P-110	Yes	44.80	Yes			6,386.6	12,238.37
295	284	Casing Joints	5 1/2	20.00	P-110	Yes	43.10	Yes			6,343.5	12,281.47
296	285	Casing Joints	5 1/2	20.00	P-110	Yes	44.26	Yes			6,299.3	12,325.73
297	286	Casing Joints	5 1/2	20.00	P-110	Yes	44.29	Yes			6,255.0	12,370.02
298	287	Casing Joints	5 1/2	20.00	P-110	Yes	40.84	Yes			6,214.1	12,410.86
299	288	Casing Joints	5 1/2	20.00	P-110	Yes	44.28	Yes			6,169.9	12,455.14
300	289	Casing Joints	5 1/2	20.00	P-110	Yes	44.27	Yes			6,125.6	12,499.41
301	290	Casing Joints	5 1/2	20.00	P-110	Yes	44.25	Yes			6,081.3	12,543.66
302	291	Casing Joints	5 1/2	20.00	P-110	Yes	38.55	Yes			6,042.8	12,582.21
303	292	Casing Joints	5 1/2	20.00	P-110	Yes	42.16	Yes			6,000.6	12,624.37
304	293	Casing Joints	5 1/2	20.00	P-110	Yes	44.20	Yes			5,956.4	12,668.57
305	294	Casing Joints	5 1/2	20.00	P-110	Yes	42.45	Yes			5,914.0	12,711.02
306	295	Casing Joints	5 1/2	20.00	P-110	Yes	40.52	Yes			5,873.5	12,751.54
307	296	Casing Joints	5 1/2	20.00	P-110	Yes	44.26	Yes			5,829.2	12,795.80
308	297	Casing Joints	5 1/2	20.00	P-110	Yes	42.45	Yes			5,786.8	12,838.25
309	298	Casing Joints	5 1/2	20.00	P-110	Yes	44.26	Yes			5,742.5	12,882.51
310	299	Casing Joints	5 1/2	20.00	P-110	Yes	41.57	Yes			5,700.9	12,924.08
311	300	Casing Joints	5 1/2	20.00	P-110	Yes	44.27	Yes			5,656.7	12,968.35
312	301	Casing Joints	5 1/2	20.00	P-110	Yes	42.35	Yes			5,614.3	13,010.70
313	302	Casing Joints	5 1/2	20.00	P-110	Yes	44.82	Yes			5,569.5	13,055.52
314	303	Casing Joints	5 1/2	20.00	P-110	Yes	44.27	Yes			5,525.2	13,099.79
315	304	Casing Joints	5 1/2	20.00	P-110	Yes	44.49	Yes			5,480.7	13,144.28
316	305	Casing Joints	5 1/2	20.00	P-110	Yes	44.83	Yes			5,435.9	13,189.11
317	306	Casing Joints	5 1/2	20.00	P-110	Yes	44.82	Yes			5,391.1	13,233.93
318	307	Casing Joints	5 1/2	20.00	P-110	Yes	44.37	Yes			5,346.7	13,278.30



Centralizer Depths

Well Name: Drake 17N

Production, Set Depth: 18,625.0ftKB

API 05123518150000		Surface Legal Location NWSW 17 4N 64W		Field Name Wattenberg		State CO		Well Configuration Type Horizontal			
Ground Elevation (ft) 4,736.00	Original KB Elevation (ft) 4,764.50	KB-Ground Distance (ft) 28.50	Spud Date 1/12/2024 04:00	Rig Release Date 1/15/2024 17:00	On Production Date	Abandon Date					

Casing Run Tally												
Run #	Ref #	Item Des	OD (in)	Wt (lb/ft)	Grade	Run?	Len (ft)	Centralized?	Ext Jwry	Connections	Top (ftKB)	Cum Len (ft)
319	308	Casing Joints	5 1/2	20.00	P-110	Yes	44.81	Yes			5,301.9	13,323.11
320	309	Casing Joints	5 1/2	20.00	P-110	Yes	40.63	Yes			5,261.3	13,363.74
321	310	Casing Joints	5 1/2	20.00	P-110	Yes	43.51	Yes			5,217.8	13,407.25
322	311	Casing Joints	5 1/2	20.00	P-110	Yes	44.28	Yes			5,173.5	13,451.53
323	312	Casing Joints	5 1/2	20.00	P-110	Yes	44.82	Yes			5,128.7	13,496.35
324	313	Casing Joints	5 1/2	20.00	P-110	Yes	43.33	Yes			5,085.3	13,539.68
325	314	Casing Joints	5 1/2	20.00	P-110	Yes	44.30	Yes			5,041.0	13,583.98
326	315	Casing Joints	5 1/2	20.00	P-110	Yes	44.85	Yes			4,996.2	13,628.83
327	316	Casing Joints	5 1/2	20.00	P-110	Yes	44.21	Yes			4,952.0	13,673.04
328	317	Casing Joints	5 1/2	20.00	P-110	Yes	44.83	Yes			4,907.1	13,717.87
329	318	Casing Joints	5 1/2	20.00	P-110	Yes	42.20	Yes			4,864.9	13,760.07
330	319	Casing Joints	5 1/2	20.00	P-110	Yes	45.38	Yes			4,819.6	13,805.45
331	320	Casing Joints	5 1/2	20.00	P-110	Yes	44.83	Yes			4,774.7	13,850.28
332	321	Casing Joints	5 1/2	20.00	P-110	Yes	41.05	Yes			4,733.7	13,891.33
333	322	Casing Joints	5 1/2	20.00	P-110	Yes	43.27	Yes			4,690.4	13,934.60
334	323	Casing Joints	5 1/2	20.00	P-110	Yes	41.28	Yes			4,649.1	13,975.88
335	324	Casing Joints	5 1/2	20.00	P-110	Yes	44.50	Yes			4,604.6	14,020.38
336	325	Casing Joints	5 1/2	20.00	P-110	Yes	44.15	Yes			4,560.5	14,064.53
337	326	Casing Joints	5 1/2	20.00	P-110	Yes	42.57	Yes			4,517.9	14,107.10
338	327	Casing Joints	5 1/2	20.00	P-110	Yes	42.55	Yes			4,475.4	14,149.65
339	328	Casing Joints	5 1/2	20.00	P-110	Yes	42.02	Yes			4,433.3	14,191.67
340	329	Casing Joints	5 1/2	20.00	P-110	Yes	41.59	Yes			4,391.7	14,233.26
341	330	Casing Joints	5 1/2	20.00	P-110	Yes	41.14	Yes			4,350.6	14,274.40
342	331	Casing Joints	5 1/2	20.00	P-110	Yes	43.47	Yes			4,307.1	14,317.87
343	332	Casing Joints	5 1/2	20.00	P-110	Yes	43.66	Yes			4,263.5	14,361.53
344	333	Casing Joints	5 1/2	20.00	P-110	Yes	43.23	Yes			4,220.2	14,404.76
345	334	Casing Joints	5 1/2	20.00	P-110	Yes	42.73	Yes			4,177.5	14,447.49
346	335	Casing Joints	5 1/2	20.00	P-110	Yes	43.21	Yes			4,134.3	14,490.70
347	336	Casing Joints	5 1/2	20.00	P-110	Yes	38.92	Yes			4,095.4	14,529.62
348	337	Casing Joints	5 1/2	20.00	P-110	Yes	43.87	Yes			4,051.5	14,573.49
349	338	Casing Joints	5 1/2	20.00	P-110	Yes	43.82	Yes			4,007.7	14,617.31



Centralizer Depths

Well Name: Drake 17N

Production, Set Depth: 18,625.0ftKB

API 0512351815000		Surface Legal Location NWSW 17 4N 64W		Field Name Wattenberg		State CO		Well Configuration Type Horizontal			
Ground Elevation (ft) 4,736.00	Original KB Elevation (ft) 4,764.50	KB-Ground Distance (ft) 28.50	Spud Date 1/12/2024 04:00	Rig Release Date 1/15/2024 17:00	On Production Date	Abandon Date					

Casing Run Tally

Run #	Ref #	Item Des	OD (in)	Wt (lb/ft)	Grade	Run?	Len (ft)	Centralized?	Ext Jwry	Connections	Top (ftKB)	Cum Len (ft)
350	339	Casing Joints	5 1/2	20.00	P-110	Yes	43.60	Yes			3,964.1	14,660.91
351	340	Casing Joints	5 1/2	20.00	P-110	Yes	43.48	Yes			3,920.6	14,704.39
352	341	Casing Joints	5 1/2	20.00	P-110	Yes	41.67	Yes			3,878.9	14,746.06
353	342	Casing Joints	5 1/2	20.00	P-110	Yes	43.43	Yes			3,835.5	14,789.49
354	343	Casing Joints	5 1/2	20.00	P-110	Yes	40.10	Yes			3,795.4	14,829.59
355	344	Casing Joints	5 1/2	20.00	P-110	Yes	42.31	Yes			3,753.1	14,871.90
356	345	Casing Joints	5 1/2	20.00	P-110	Yes	41.50	Yes			3,711.6	14,913.40
357	346	Casing Joints	5 1/2	20.00	P-110	Yes	42.12	Yes			3,669.5	14,955.52
358	347	Casing Joints	5 1/2	20.00	P-110	Yes	36.74	Yes			3,632.7	14,992.26
359	348	Casing Joints	5 1/2	20.00	P-110	Yes	43.62	Yes			3,589.1	15,035.88
360	349	Casing Joints	5 1/2	20.00	P-110	Yes	43.05	Yes			3,546.1	15,078.93
361	350	Casing Joints	5 1/2	20.00	P-110	Yes	42.14	Yes			3,503.9	15,121.07
362	351	Casing Joints	5 1/2	20.00	P-110	Yes	43.47	Yes			3,460.5	15,164.54
364	352	Casing Joints	5 1/2	20.00	P-110	Yes	42.41	Yes			3,397.1	15,227.89
365	353	Casing Joints	5 1/2	20.00	P-110	Yes	42.56	Yes			3,354.6	15,270.45
366	354	Casing Joints	5 1/2	20.00	P-110	Yes	41.50	Yes			3,313.1	15,311.95
367	355	Casing Joints	5 1/2	20.00	P-110	Yes	42.18	Yes			3,270.9	15,354.13
368	356	Casing Joints	5 1/2	20.00	P-110	Yes	42.18	Yes			3,228.7	15,396.31
369	357	Casing Joints	5 1/2	20.00	P-110	Yes	42.20	Yes			3,186.5	15,438.51
370	358	Casing Joints	5 1/2	20.00	P-110	Yes	42.23	Yes			3,144.3	15,480.74
371	359	Casing Joints	5 1/2	20.00	P-110	Yes	42.91	Yes			3,101.4	15,523.65
372	360	Casing Joints	5 1/2	20.00	P-110	Yes	42.20	Yes			3,059.2	15,565.85
373	361	Casing Joints	5 1/2	20.00	P-110	Yes	42.10	Yes			3,017.1	15,607.95
374	362	Casing Joints	5 1/2	20.00	P-110	Yes	42.01	Yes			2,975.0	15,649.96
375	363	Casing Joints	5 1/2	20.00	P-110	Yes	41.94	Yes			2,933.1	15,691.90
376	364	Casing Joints	5 1/2	20.00	P-110	Yes	41.82	Yes			2,891.3	15,733.72
377	365	Casing Joints	5 1/2	20.00	P-110	Yes	42.65	Yes			2,848.6	15,776.37
378	366	Casing Joints	5 1/2	20.00	P-110	Yes	42.40	Yes			2,806.2	15,818.77
379	367	Casing Joints	5 1/2	20.00	P-110	Yes	42.45	Yes			2,763.8	15,861.22
380	368	Casing Joints	5 1/2	20.00	P-110	Yes	39.10	Yes			2,724.7	15,900.32
381	369	Casing Joints	5 1/2	20.00	P-110	Yes	40.10	Yes			2,684.6	15,940.42



Centralizer Depths

Well Name: Drake 17N

Production, Set Depth: 18,625.0ftKB

API 0512351815000		Surface Legal Location NWSW 17 4N 64W		Field Name Wattenberg		State CO		Well Configuration Type Horizontal			
Ground Elevation (ft) 4,736.00	Original KB Elevation (ft) 4,764.50	KB-Ground Distance (ft) 28.50	Spud Date 1/12/2024 04:00	Rig Release Date 1/15/2024 17:00	On Production Date	Abandon Date					

Casing Run Tally												
Run #	Ref #	Item Des	OD (in)	Wt (lb/ft)	Grade	Run?	Len (ft)	Centralized?	Ext Jwry	Connections	Top (ftKB)	Cum Len (ft)
382	370	Casing Joints	5 1/2	20.00	P-110	Yes	40.72	Yes			2,643.9	15,981.14
383	371	Casing Joints	5 1/2	20.00	P-110	Yes	42.07	Yes			2,601.8	16,023.21
384	372	Casing Joints	5 1/2	20.00	P-110	Yes	42.39	Yes			2,559.4	16,065.60
385	373	Casing Joints	5 1/2	20.00	P-110	Yes	42.51	Yes			2,516.9	16,108.11
386	374	Casing Joints	5 1/2	20.00	P-110	Yes	42.55	Yes			2,474.3	16,150.66
387	375	Casing Joints	5 1/2	20.00	P-110	Yes	42.11	Yes			2,432.2	16,192.77
388	376	Casing Joints	5 1/2	20.00	P-110	Yes	42.12	Yes			2,390.1	16,234.89
389	377	Casing Joints	5 1/2	20.00	P-110	Yes	42.25	Yes			2,347.9	16,277.14
390	378	Casing Joints	5 1/2	20.00	P-110	Yes	42.19	Yes			2,305.7	16,319.33
391	379	Casing Joints	5 1/2	20.00	P-110	Yes	43.71	Yes			2,262.0	16,363.04
392	380	Casing Joints	5 1/2	20.00	P-110	Yes	36.93	Yes			2,225.0	16,399.97
393	381	Casing Joints	5 1/2	20.00	P-110	Yes	37.65	Yes			2,187.4	16,437.62
394	382	Casing Joints	5 1/2	20.00	P-110	Yes	36.10	Yes			2,151.3	16,473.72
395	383	Casing Joints	5 1/2	20.00	P-110	Yes	40.41	Yes			2,110.9	16,514.13
396	384	Casing Joints	5 1/2	20.00	P-110	Yes	42.11	Yes			2,068.8	16,556.24
397	385	Casing Joints	5 1/2	20.00	P-110	Yes	42.57	Yes			2,026.2	16,598.81
398	386	Casing Joints	5 1/2	20.00	P-110	Yes	42.38	Yes			1,983.8	16,641.19
399	387	Casing Joints	5 1/2	20.00	P-110	Yes	42.11	Yes			1,941.7	16,683.30
400	388	Casing Joints	5 1/2	20.00	P-110	Yes	42.40	Yes			1,899.3	16,725.70
401	389	Casing Joints	5 1/2	20.00	P-110	Yes	40.29	Yes			1,859.0	16,765.99
402	390	Casing Joints	5 1/2	20.00	P-110	Yes	42.41	Yes			1,816.6	16,808.40
403	391	Casing Joints	5 1/2	20.00	P-110	Yes	42.20	Yes			1,774.4	16,850.60
404	392	Casing Joints	5 1/2	20.00	P-110	Yes	43.52	Yes			1,730.9	16,894.12
405	393	Casing Joints	5 1/2	20.00	P-110	Yes	40.81	Yes			1,690.1	16,934.93
406	394	Casing Joints	5 1/2	20.00	P-110	Yes	42.15	Yes			1,647.9	16,977.08
407	395	Casing Joints	5 1/2	20.00	P-110	Yes	42.17	Yes			1,605.8	17,019.25
408	396	Casing Joints	5 1/2	20.00	P-110	Yes	42.11	Yes			1,563.6	17,061.36
409	397	Casing Joints	5 1/2	20.00	P-110	Yes	42.52	Yes			1,521.1	17,103.88
410	398	Casing Joints	5 1/2	20.00	P-110	Yes	42.38	Yes			1,478.7	17,146.26
411	399	Casing Joints	5 1/2	20.00	P-110	Yes	42.49	Yes			1,436.3	17,188.75
412	400	Casing Joints	5 1/2	20.00	P-110	Yes	42.54	Yes			1,393.7	17,231.29



Centralizer Depths

Well Name: Drake 17N

Production, Set Depth: 18,625.0ftKB

API 05123518150000		Surface Legal Location NWSW 17 4N 64W		Field Name Wattenberg		State CO		Well Configuration Type Horizontal			
Ground Elevation (ft) 4,736.00	Original KB Elevation (ft) 4,764.50	KB-Ground Distance (ft) 28.50	Spud Date 1/12/2024 04:00	Rig Release Date 1/15/2024 17:00	On Production Date	Abandon Date					

Casing Run Tally

Run #	Ref #	Item Des	OD (in)	Wt (lb/ft)	Grade	Run?	Len (ft)	Centralized?	Ext Jwry	Connections	Top (ftKB)	Cum Len (ft)
413	401	Casing Joints	5 1/2	20.00	P-110	Yes	40.41	Yes			1,353.3	17,271.70
414	402	Casing Joints	5 1/2	20.00	P-110	Yes	42.55	Yes			1,310.8	17,314.25
415	403	Casing Joints	5 1/2	20.00	P-110	Yes	42.17	Yes			1,268.6	17,356.42
416	404	Casing Joints	5 1/2	20.00	P-110	Yes	42.42	Yes			1,226.2	17,398.84
417	405	Casing Joints	5 1/2	20.00	P-110	Yes	42.15	Yes			1,184.0	17,440.99
418	406	Casing Joints	5 1/2	20.00	P-110	Yes	42.41	Yes			1,141.6	17,483.40
419	407	Casing Joints	5 1/2	20.00	P-110	Yes	42.81	Yes			1,098.8	17,526.21
420	408	Casing Joints	5 1/2	20.00	P-110	Yes	42.13	Yes			1,056.7	17,568.34
421	409	Casing Joints	5 1/2	20.00	P-110	Yes	42.39	Yes			1,014.3	17,610.73
422	410	Casing Joints	5 1/2	20.00	P-110	Yes	42.12	Yes			972.2	17,652.85
423	411	Casing Joints	5 1/2	20.00	P-110	Yes	42.56	Yes			929.6	17,695.41
424	412	Casing Joints	5 1/2	20.00	P-110	Yes	42.11	Yes			887.5	17,737.52
425	413	Casing Joints	5 1/2	20.00	P-110	Yes	42.42	Yes			845.1	17,779.94
426	414	Casing Joints	5 1/2	20.00	P-110	Yes	41.40	Yes			803.7	17,821.34
427	415	Casing Joints	5 1/2	20.00	P-110	Yes	42.54	Yes			761.1	17,863.88
428	416	Casing Joints	5 1/2	20.00	P-110	Yes	42.57	Yes			718.6	17,906.45
429	417	Casing Joints	5 1/2	20.00	P-110	Yes	41.96	Yes			676.6	17,948.41
430	418	Casing Joints	5 1/2	20.00	P-110	Yes	42.10	Yes			634.5	17,990.51
431	419	Casing Joints	5 1/2	20.00	P-110	Yes	41.80	Yes			592.7	18,032.31
432	420	Casing Joints	5 1/2	20.00	P-110	Yes	42.52	Yes			550.2	18,074.83
433	421	Casing Joints	5 1/2	20.00	P-110	Yes	42.40	Yes			507.8	18,117.23
434	422	Casing Joints	5 1/2	20.00	P-110	Yes	42.57	Yes			465.2	18,159.80