

Chevron DJ Basin

DRAKE 04NA

Drake Pad

North American Datum 1983 , US State Plane 1983, Colorado Northern Zone

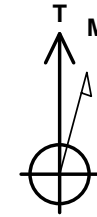
Ground Elevation: 4737.0

| +N/-S | +E/-W | Northing | Easting | Latitude | Longitude |
|-------|-------|------------|------------|-----------|-------------|
| 0.0 | 0.0 | 1358513.29 | 3256485.72 | 40.313868 | -104.580232 |

P272 - RKB 28.5' Well @ 4765.5ft (P272 - RKB 28.5')



Drake Pad
DRAKE 04NA
Drake 04NA Final Surveys
15:01, March 21 2024



Azimuths to True North
Magnetic North: 7.68°

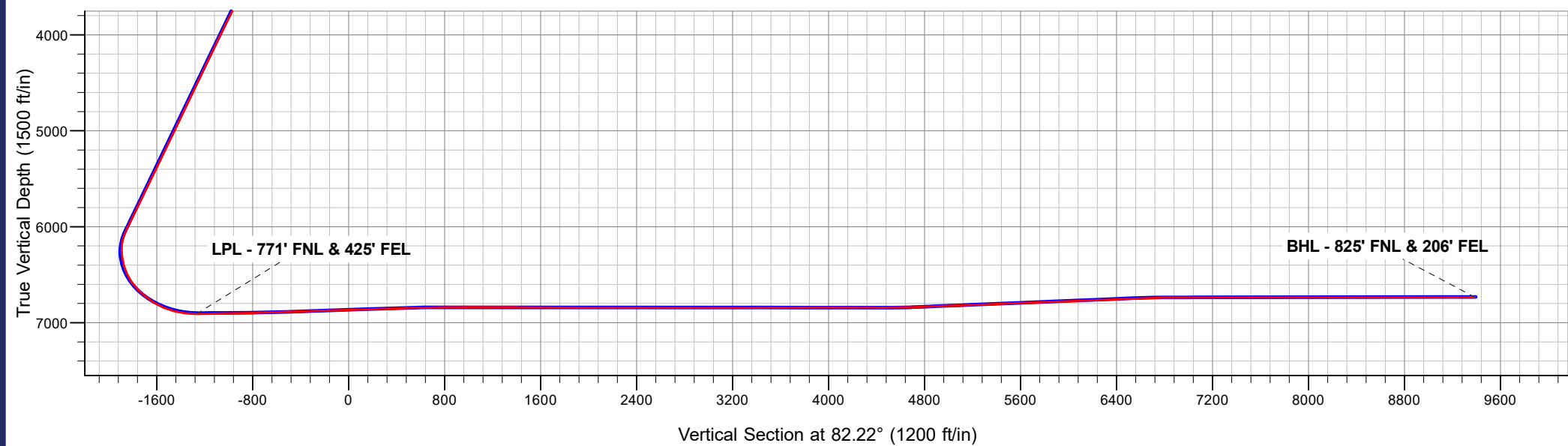
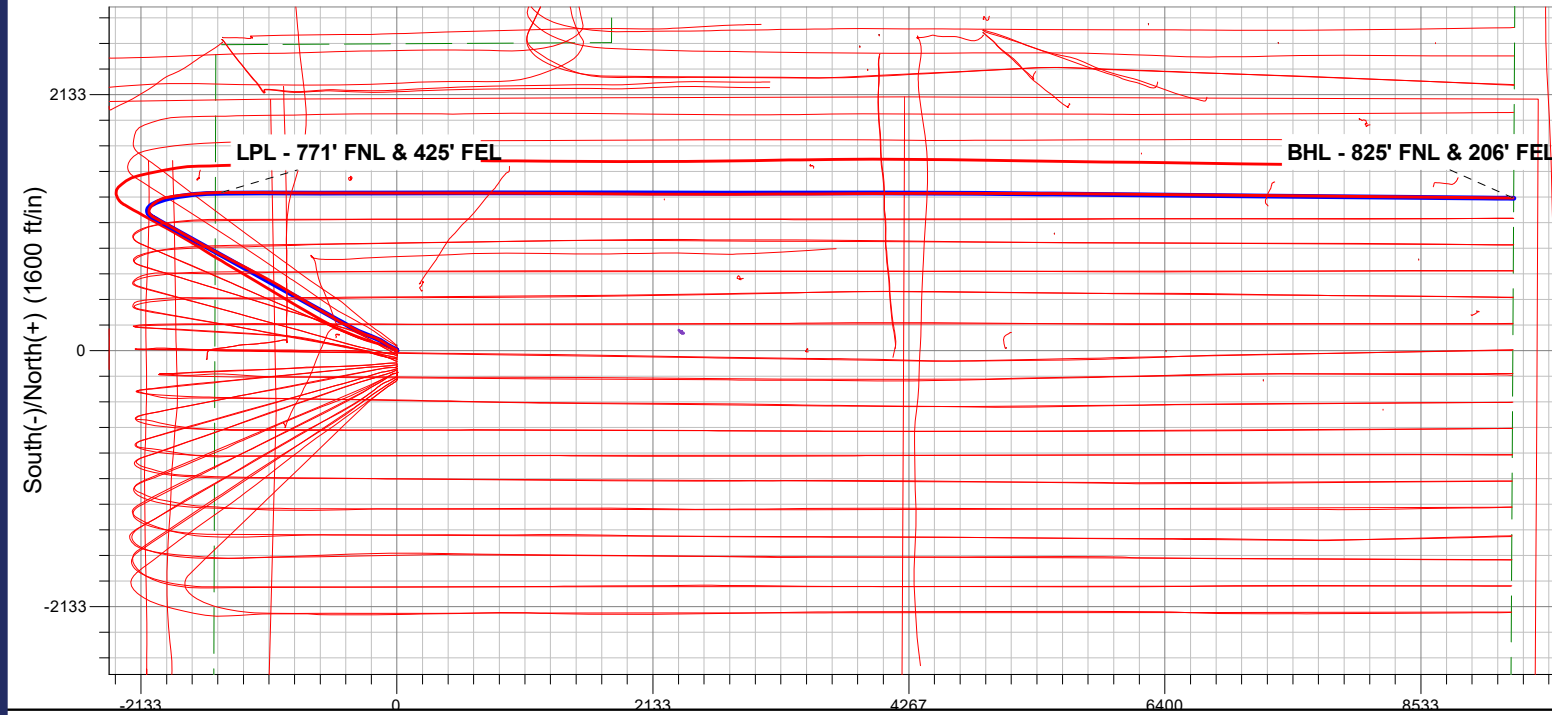
Magnetic Field
Strength: 51682.4nT
Dip Angle: 66.55°
Date: 11/08/2023
Model: HRGM

ANNOTATIONS

| MD | TVD | Annotation |
|---------|--------|---------------------------|
| 7778.0 | 6908.1 | LPL - 771' FNL & 425' FEL |
| 18545.0 | 6734.6 | BHL - 825' FNL & 206' FEL |

FINAL SURVEY

Projected Bottom Hole Location
18545.0' MD / 6734.6' TVD
90.05° INC / 90.59° AZM
825' FNL / 206' FEL



Chevron DJ Basin

SEC.17-T4N-R64W

Drake Pad

DRAKE 04NA

Drake 04NA

Design: Drake 04NA Final Surveys

Survey Report - Geographic

21 March, 2024

Ensign

Survey Report - Geographic

| | |
|---|--|
| Company: Chevron DJ Basin | Local Co-ordinate Reference: Well DRAKE 04NA |
| Project: SEC.17-T4N-R64W | TVD Reference: Well @ 4765.5ft (P272 - RKB 28.5') |
| Site: Drake Pad | MD Reference: Well @ 4765.5ft (P272 - RKB 28.5') |
| Well: DRAKE 04NA | North Reference: True |
| Wellbore: Drake 04NA | Survey Calculation Method: Minimum Curvature |
| Design: Drake 04NA Final Surveys | Database: US_EDM |

| | |
|---|-------------------------------------|
| Project SEC.17-T4N-R64W, Weld County, Colorado | |
| Map System: US State Plane 1983 | System Datum: Mean Sea Level |
| Geo Datum: North American Datum 1983 | |
| Map Zone: Colorado Northern Zone | Using geodetic scale factor |

| | | |
|-------------------------------------|------------------------------------|---------------------------------|
| Site Drake Pad | | |
| Site Position: | Northing: 1,358,393.41 usft | Latitude: 40.313539 |
| From: Lat/Long | Easting: 3,256,487.58 usft | Longitude: -104.580230 |
| Position Uncertainty: 0.0 ft | Slot Radius: 13-3/16 " | Grid Convergence: 0.59 ° |

| | | |
|------------------------------------|------------------------------------|---------------------------------|
| Well DRAKE 04NA | | |
| Well Position +N/-S 0.0 ft | Northing: 1,358,513.29 usft | Latitude: 40.313868 |
| +E/-W 0.0 ft | Easting: 3,256,485.72 usft | Longitude: -104.580232 |
| Position Uncertainty 0.0 ft | Wellhead Elevation: ft | Ground Level: 4,737.0 ft |

| Wellbore Drake 04NA | | | | | |
|----------------------------|------------|-------------|-----------------|---------------|---------------------|
| Magnetics | Model Name | Sample Date | Declination (°) | Dip Angle (°) | Field Strength (nT) |
| | HRGM | 11/08/2023 | 7.68 | 66.55 | 51,682.39625144 |

| Design Drake 04NA Final Surveys | | | | |
|--|-----------------------|--------------------------|------------|---------------|
| Audit Notes: | | | | |
| Version: 1.0 | Phase: ACTUAL | Tie On Depth: 0.0 | | |
| Vertical Section: | Depth From (TVD) (ft) | +N/-S (ft) | +E/-W (ft) | Direction (°) |
| | 0.0 | 0.0 | 0.0 | 82.22 |

| Survey Program | | Date 03/21/2024 | | |
|-----------------------|----------|------------------------|-----------|----------------|
| From (ft) | To (ft) | Survey (Wellbore) | Tool Name | Description |
| 158.5 | 18,545.0 | Survey #1 (Drake 04NA) | MWD | MWD - Standard |

| Survey | | | | | | | | | | |
|---------------------|-----------------|-------------|---------------------|------------|------------|---------------------|--------------------|-----------|-------------|--|
| Measured Depth (ft) | Inclination (°) | Azimuth (°) | Vertical Depth (ft) | +N/-S (ft) | +E/-W (ft) | Map Northing (usft) | Map Easting (usft) | Latitude | Longitude | |
| 0.0 | 0.00 | 0.00 | 0.0 | 0.0 | 0.0 | 1,358,513.29 | 3,256,485.72 | 40.313868 | -104.580232 | |
| 158.5 | 0.18 | 252.91 | 158.5 | -0.1 | -0.2 | 1,358,513.22 | 3,256,485.48 | 40.313868 | -104.580233 | |
| 249.5 | 0.35 | 303.54 | 249.5 | 0.0 | -0.6 | 1,358,513.33 | 3,256,485.11 | 40.313868 | -104.580235 | |
| 340.5 | 0.44 | 21.59 | 340.5 | 0.5 | -0.7 | 1,358,513.80 | 3,256,485.00 | 40.313870 | -104.580235 | |
| 458.5 | 0.79 | 5.97 | 458.5 | 1.7 | -0.5 | 1,358,515.04 | 3,256,485.24 | 40.313873 | -104.580234 | |
| 545.5 | 1.85 | 324.46 | 545.5 | 3.5 | -1.2 | 1,358,516.77 | 3,256,484.47 | 40.313878 | -104.580237 | |
| 632.5 | 2.81 | 300.38 | 632.4 | 5.7 | -3.9 | 1,358,518.96 | 3,256,481.79 | 40.313884 | -104.580246 | |
| 719.5 | 4.04 | 307.58 | 719.2 | 8.7 | -8.1 | 1,358,521.86 | 3,256,477.49 | 40.313892 | -104.580262 | |
| 806.5 | 5.28 | 300.73 | 806.0 | 12.6 | -14.0 | 1,358,525.72 | 3,256,471.58 | 40.313903 | -104.580283 | |
| 892.5 | 6.86 | 295.10 | 891.5 | 16.8 | -22.1 | 1,358,529.83 | 3,256,463.49 | 40.313914 | -104.580312 | |
| 977.5 | 8.62 | 295.81 | 975.7 | 21.7 | -32.4 | 1,358,534.65 | 3,256,453.10 | 40.313928 | -104.580349 | |
| 1,066.5 | 10.55 | 298.44 | 1,063.4 | 28.5 | -45.6 | 1,358,541.30 | 3,256,439.87 | 40.313946 | -104.580396 | |

Ensign

Survey Report - Geographic

| | | | |
|------------------|--------------------------|-------------------------------------|------------------------------------|
| Company: | Chevron DJ Basin | Local Co-ordinate Reference: | Well DRAKE 04NA |
| Project: | SEC.17-T4N-R64W | TVD Reference: | Well @ 4765.5ft (P272 - RKB 28.5') |
| Site: | Drake Pad | MD Reference: | Well @ 4765.5ft (P272 - RKB 28.5') |
| Well: | DRAKE 04NA | North Reference: | True |
| Wellbore: | Drake 04NA | Survey Calculation Method: | Minimum Curvature |
| Design: | Drake 04NA Final Surveys | Database: | US_EDM |

| Survey | | | | | | | | | | |
|---------------------|-----------------|-------------|---------------------|------------|------------|---------------------|--------------------|-----------|-------------|--|
| Measured Depth (ft) | Inclination (°) | Azimuth (°) | Vertical Depth (ft) | +N/-S (ft) | +E/-W (ft) | Map Northing (usft) | Map Easting (usft) | Latitude | Longitude | |
| 1,153.5 | 11.34 | 300.20 | 1,148.9 | 36.6 | -60.0 | 1,358,549.25 | 3,256,425.39 | 40.313969 | -104.580447 | |
| 1,242.5 | 12.84 | 303.01 | 1,235.9 | 46.4 | -75.8 | 1,358,558.87 | 3,256,409.43 | 40.313995 | -104.580504 | |
| 1,329.5 | 15.04 | 303.12 | 1,320.3 | 57.8 | -93.4 | 1,358,570.12 | 3,256,391.75 | 40.314027 | -104.580567 | |
| 1,414.5 | 17.59 | 302.49 | 1,401.9 | 70.7 | -113.5 | 1,358,582.84 | 3,256,371.55 | 40.314062 | -104.580639 | |
| 1,501.5 | 19.35 | 298.97 | 1,484.4 | 84.8 | -137.2 | 1,358,596.64 | 3,256,347.70 | 40.314101 | -104.580724 | |
| 1,589.5 | 20.22 | 295.28 | 1,567.2 | 98.3 | -163.7 | 1,358,609.92 | 3,256,321.06 | 40.314138 | -104.580819 | |
| 1,649.5 | 21.72 | 291.59 | 1,623.2 | 106.8 | -183.4 | 1,358,618.23 | 3,256,301.27 | 40.314161 | -104.580890 | |
| 1,746.0 | 21.80 | 287.71 | 1,712.9 | 118.9 | -217.0 | 1,358,629.90 | 3,256,267.47 | 40.314194 | -104.581011 | |
| 1,809.0 | 20.93 | 286.71 | 1,771.5 | 125.7 | -239.0 | 1,358,636.46 | 3,256,245.48 | 40.314213 | -104.581089 | |
| 1,903.0 | 23.84 | 292.36 | 1,858.5 | 137.7 | -272.6 | 1,358,648.17 | 3,256,211.70 | 40.314246 | -104.581210 | |
| 1,998.0 | 24.85 | 298.36 | 1,945.0 | 154.5 | -307.9 | 1,358,664.59 | 3,256,176.20 | 40.314292 | -104.581337 | |
| 2,093.0 | 25.04 | 297.84 | 2,031.2 | 173.4 | -343.3 | 1,358,683.10 | 3,256,140.67 | 40.314344 | -104.581463 | |
| 2,188.0 | 25.30 | 297.26 | 2,117.1 | 192.1 | -379.1 | 1,358,701.41 | 3,256,104.65 | 40.314395 | -104.581592 | |
| 2,283.0 | 25.32 | 296.79 | 2,203.0 | 210.5 | -415.3 | 1,358,719.49 | 3,256,068.29 | 40.314446 | -104.581722 | |
| 2,377.0 | 25.88 | 298.43 | 2,287.8 | 229.3 | -451.3 | 1,358,737.94 | 3,256,032.11 | 40.314498 | -104.581851 | |
| 2,472.0 | 25.74 | 300.62 | 2,373.3 | 249.7 | -487.3 | 1,358,757.94 | 3,255,995.92 | 40.314554 | -104.581980 | |
| 2,567.0 | 25.91 | 299.40 | 2,458.8 | 270.4 | -523.1 | 1,358,778.26 | 3,255,959.87 | 40.314610 | -104.582108 | |
| 2,661.0 | 25.70 | 299.43 | 2,543.5 | 290.5 | -558.7 | 1,358,797.99 | 3,255,924.02 | 40.314666 | -104.582236 | |
| 2,756.0 | 25.56 | 299.77 | 2,629.1 | 310.8 | -594.5 | 1,358,817.91 | 3,255,888.09 | 40.314721 | -104.582364 | |
| 2,850.0 | 25.94 | 301.27 | 2,713.8 | 331.6 | -629.6 | 1,358,838.29 | 3,255,852.70 | 40.314778 | -104.582490 | |
| 2,945.0 | 26.11 | 300.35 | 2,799.1 | 352.9 | -665.4 | 1,358,859.26 | 3,255,816.68 | 40.314837 | -104.582619 | |
| 3,039.0 | 25.26 | 299.25 | 2,883.9 | 373.2 | -700.8 | 1,358,879.14 | 3,255,781.12 | 40.314892 | -104.582745 | |
| 3,133.0 | 25.82 | 301.19 | 2,968.7 | 393.6 | -735.8 | 1,358,899.18 | 3,255,745.91 | 40.314948 | -104.582871 | |
| 3,228.0 | 26.04 | 300.72 | 3,054.1 | 414.9 | -771.4 | 1,358,920.18 | 3,255,710.06 | 40.315007 | -104.582999 | |
| 3,323.0 | 25.54 | 300.23 | 3,139.6 | 435.9 | -807.0 | 1,358,940.77 | 3,255,674.23 | 40.315065 | -104.583126 | |
| 3,418.0 | 25.94 | 301.06 | 3,225.2 | 456.9 | -842.5 | 1,358,961.43 | 3,255,638.52 | 40.315122 | -104.583254 | |
| 3,513.0 | 25.80 | 301.64 | 3,310.7 | 478.5 | -877.9 | 1,358,982.62 | 3,255,602.90 | 40.315182 | -104.583381 | |
| 3,608.0 | 25.92 | 301.70 | 3,396.2 | 500.2 | -913.2 | 1,359,004.01 | 3,255,567.41 | 40.315241 | -104.583507 | |
| 3,702.0 | 25.81 | 300.71 | 3,480.8 | 521.5 | -948.3 | 1,359,024.89 | 3,255,532.12 | 40.315300 | -104.583633 | |
| 3,797.0 | 25.80 | 300.96 | 3,566.3 | 542.7 | -983.8 | 1,359,045.72 | 3,255,496.40 | 40.315358 | -104.583760 | |
| 3,891.0 | 25.02 | 299.84 | 3,651.2 | 563.1 | -1,018.6 | 1,359,065.77 | 3,255,461.40 | 40.315414 | -104.583885 | |
| 3,986.0 | 25.66 | 299.28 | 3,737.1 | 583.2 | -1,053.9 | 1,359,085.46 | 3,255,425.83 | 40.315469 | -104.584012 | |
| 4,080.0 | 26.55 | 298.02 | 3,821.5 | 603.0 | -1,090.2 | 1,359,104.90 | 3,255,389.33 | 40.315523 | -104.584142 | |
| 4,175.0 | 25.45 | 297.64 | 3,906.9 | 622.4 | -1,127.1 | 1,359,123.96 | 3,255,352.31 | 40.315577 | -104.584274 | |
| 4,270.0 | 24.98 | 297.70 | 3,992.8 | 641.2 | -1,162.9 | 1,359,142.38 | 3,255,316.27 | 40.315628 | -104.584403 | |
| 4,364.0 | 25.28 | 298.11 | 4,077.9 | 659.9 | -1,198.2 | 1,359,160.70 | 3,255,280.80 | 40.315680 | -104.584529 | |
| 4,459.0 | 25.38 | 297.22 | 4,163.8 | 678.8 | -1,234.2 | 1,359,179.19 | 3,255,244.62 | 40.315731 | -104.584658 | |
| 4,554.0 | 25.49 | 297.61 | 4,249.6 | 697.6 | -1,270.4 | 1,359,197.60 | 3,255,208.21 | 40.315783 | -104.584788 | |
| 4,649.0 | 25.08 | 296.65 | 4,335.5 | 716.1 | -1,306.5 | 1,359,215.73 | 3,255,171.91 | 40.315834 | -104.584918 | |
| 4,744.0 | 25.97 | 298.54 | 4,421.2 | 735.0 | -1,342.8 | 1,359,234.32 | 3,255,135.45 | 40.315886 | -104.585048 | |
| 4,839.0 | 25.70 | 297.70 | 4,506.7 | 754.5 | -1,379.3 | 1,359,253.45 | 3,255,098.74 | 40.315939 | -104.585179 | |
| 4,934.0 | 25.16 | 297.69 | 4,592.5 | 773.5 | -1,415.4 | 1,359,272.04 | 3,255,062.42 | 40.315991 | -104.585308 | |
| 5,029.0 | 24.98 | 297.35 | 4,678.5 | 792.1 | -1,451.1 | 1,359,290.27 | 3,255,026.53 | 40.316042 | -104.585436 | |
| 5,123.0 | 25.14 | 298.12 | 4,763.7 | 810.6 | -1,486.4 | 1,359,308.43 | 3,254,991.11 | 40.316093 | -104.585562 | |
| 5,218.0 | 23.73 | 297.31 | 4,850.2 | 828.9 | -1,521.1 | 1,359,326.35 | 3,254,956.14 | 40.316143 | -104.585687 | |
| 5,313.0 | 25.88 | 295.78 | 4,936.4 | 846.7 | -1,556.8 | 1,359,343.77 | 3,254,920.30 | 40.316192 | -104.585815 | |
| 5,408.0 | 25.99 | 301.58 | 5,021.9 | 866.6 | -1,593.2 | 1,359,363.31 | 3,254,883.68 | 40.316247 | -104.585946 | |
| 5,503.0 | 25.27 | 298.92 | 5,107.5 | 887.3 | -1,628.7 | 1,359,383.64 | 3,254,847.99 | 40.316304 | -104.586073 | |
| 5,598.0 | 25.17 | 299.31 | 5,193.5 | 907.0 | -1,664.0 | 1,359,402.97 | 3,254,812.43 | 40.316358 | -104.586200 | |
| 5,692.0 | 25.42 | 299.55 | 5,278.4 | 926.8 | -1,699.0 | 1,359,422.34 | 3,254,777.24 | 40.316412 | -104.586325 | |
| 5,787.0 | 26.43 | 299.69 | 5,363.9 | 947.3 | -1,735.1 | 1,359,442.49 | 3,254,740.93 | 40.316468 | -104.586455 | |
| 5,881.0 | 26.58 | 299.59 | 5,448.0 | 968.0 | -1,771.6 | 1,359,462.86 | 3,254,704.26 | 40.316525 | -104.586585 | |
| 5,976.0 | 26.62 | 300.24 | 5,533.0 | 989.2 | -1,808.5 | 1,359,483.69 | 3,254,667.17 | 40.316583 | -104.586718 | |
| 6,071.0 | 26.33 | 299.34 | 5,618.0 | 1,010.3 | -1,845.2 | 1,359,504.35 | 3,254,630.20 | 40.316641 | -104.586849 | |
| 6,165.0 | 25.42 | 297.78 | 5,702.6 | 1,029.9 | -1,881.2 | 1,359,523.59 | 3,254,593.98 | 40.316695 | -104.586979 | |

Ensign

Survey Report - Geographic

| | | | |
|------------------|--------------------------|-------------------------------------|------------------------------------|
| Company: | Chevron DJ Basin | Local Co-ordinate Reference: | Well DRAKE 04NA |
| Project: | SEC.17-T4N-R64W | TVD Reference: | Well @ 4765.5ft (P272 - RKB 28.5') |
| Site: | Drake Pad | MD Reference: | Well @ 4765.5ft (P272 - RKB 28.5') |
| Well: | DRAKE 04NA | North Reference: | True |
| Wellbore: | Drake 04NA | Survey Calculation Method: | Minimum Curvature |
| Design: | Drake 04NA Final Surveys | Database: | US_EDM |

| Survey | | | | | | | | | | |
|--------------------------------------|-----------------|-------------|---------------------|------------|------------|---------------------|--------------------|-----------|-------------|--|
| Measured Depth (ft) | Inclination (°) | Azimuth (°) | Vertical Depth (ft) | +N/-S (ft) | +E/-W (ft) | Map Northing (usft) | Map Easting (usft) | Latitude | Longitude | |
| 6,260.0 | 26.04 | 299.08 | 5,788.1 | 1,049.5 | -1,917.5 | 1,359,542.85 | 3,254,557.52 | 40.316749 | -104.587109 | |
| 6,355.0 | 26.30 | 299.21 | 5,873.4 | 1,070.0 | -1,954.1 | 1,359,562.87 | 3,254,520.71 | 40.316805 | -104.587240 | |
| 6,450.0 | 25.99 | 299.32 | 5,958.7 | 1,090.4 | -1,990.6 | 1,359,582.96 | 3,254,483.99 | 40.316861 | -104.587371 | |
| 6,545.0 | 25.44 | 300.34 | 6,044.3 | 1,110.9 | -2,026.4 | 1,359,603.08 | 3,254,448.02 | 40.316917 | -104.587499 | |
| 6,639.0 | 18.67 | 316.29 | 6,131.4 | 1,132.0 | -2,054.3 | 1,359,623.91 | 3,254,419.92 | 40.316975 | -104.587599 | |
| 6,734.0 | 12.67 | 349.21 | 6,223.0 | 1,153.3 | -2,066.7 | 1,359,645.06 | 3,254,407.21 | 40.317034 | -104.587644 | |
| 6,829.0 | 13.42 | 18.54 | 6,315.7 | 1,174.0 | -2,065.2 | 1,359,665.79 | 3,254,408.55 | 40.317091 | -104.587638 | |
| 6,923.0 | 18.20 | 34.17 | 6,406.1 | 1,196.5 | -2,053.5 | 1,359,688.42 | 3,254,420.04 | 40.317152 | -104.587596 | |
| 7,018.0 | 23.76 | 47.22 | 6,494.9 | 1,221.8 | -2,031.1 | 1,359,713.95 | 3,254,442.19 | 40.317222 | -104.587516 | |
| 7,114.0 | 31.28 | 59.12 | 6,580.0 | 1,247.8 | -1,995.4 | 1,359,740.30 | 3,254,477.58 | 40.317293 | -104.587388 | |
| 7,209.0 | 38.89 | 72.22 | 6,657.8 | 1,269.7 | -1,945.7 | 1,359,762.65 | 3,254,527.06 | 40.317353 | -104.587210 | |
| 7,303.0 | 44.78 | 81.49 | 6,727.9 | 1,283.6 | -1,884.7 | 1,359,777.21 | 3,254,587.86 | 40.317391 | -104.586991 | |
| 7,398.0 | 52.43 | 84.01 | 6,790.6 | 1,292.5 | -1,814.1 | 1,359,786.84 | 3,254,658.40 | 40.317416 | -104.586738 | |
| 7,493.0 | 61.89 | 84.52 | 6,842.1 | 1,300.4 | -1,734.8 | 1,359,795.61 | 3,254,737.64 | 40.317438 | -104.586453 | |
| 7,588.0 | 71.54 | 84.75 | 6,879.6 | 1,308.6 | -1,648.0 | 1,359,804.65 | 3,254,824.33 | 40.317460 | -104.586142 | |
| 7,683.0 | 81.51 | 86.18 | 6,901.7 | 1,315.8 | -1,556.0 | 1,359,812.87 | 3,254,916.22 | 40.317480 | -104.585812 | |
| 7,778.0 | 90.76 | 90.60 | 6,908.1 | 1,318.5 | -1,461.4 | 1,359,816.50 | 3,255,010.81 | 40.317487 | -104.585473 | |
| LPL - 771' FNL & 425' FEL | | | | | | | | | | |
| 7,873.0 | 91.08 | 90.49 | 6,906.6 | 1,317.6 | -1,366.4 | 1,359,816.58 | 3,255,105.79 | 40.317485 | -104.585132 | |
| 7,967.0 | 91.19 | 90.28 | 6,904.7 | 1,317.0 | -1,272.4 | 1,359,816.92 | 3,255,199.77 | 40.317483 | -104.584795 | |
| 8,062.0 | 91.12 | 90.32 | 6,902.8 | 1,316.5 | -1,177.4 | 1,359,817.41 | 3,255,294.74 | 40.317482 | -104.584455 | |
| 8,156.0 | 92.14 | 90.25 | 6,900.1 | 1,316.0 | -1,083.5 | 1,359,817.92 | 3,255,388.70 | 40.317480 | -104.584118 | |
| 8,346.0 | 91.88 | 90.25 | 6,893.5 | 1,315.2 | -893.6 | 1,359,819.06 | 3,255,578.57 | 40.317478 | -104.583437 | |
| 8,441.0 | 92.01 | 90.34 | 6,890.2 | 1,314.7 | -798.7 | 1,359,819.55 | 3,255,673.51 | 40.317477 | -104.583096 | |
| 8,536.0 | 92.09 | 90.00 | 6,886.9 | 1,314.4 | -703.7 | 1,359,820.26 | 3,255,768.44 | 40.317476 | -104.582756 | |
| 8,630.0 | 92.15 | 89.89 | 6,883.4 | 1,314.5 | -609.8 | 1,359,821.32 | 3,255,862.36 | 40.317476 | -104.582419 | |
| 8,725.0 | 92.06 | 90.30 | 6,879.9 | 1,314.3 | -514.8 | 1,359,822.15 | 3,255,957.29 | 40.317476 | -104.582079 | |
| 8,820.0 | 92.28 | 90.55 | 6,876.3 | 1,313.6 | -419.9 | 1,359,822.43 | 3,256,052.22 | 40.317474 | -104.581738 | |
| 8,915.0 | 92.15 | 89.81 | 6,872.6 | 1,313.3 | -325.0 | 1,359,823.11 | 3,256,147.14 | 40.317473 | -104.581398 | |
| 9,010.0 | 92.22 | 90.18 | 6,869.0 | 1,313.3 | -230.1 | 1,359,824.11 | 3,256,242.06 | 40.317473 | -104.581057 | |
| 9,104.0 | 92.32 | 90.02 | 6,865.3 | 1,313.2 | -136.1 | 1,359,824.92 | 3,256,335.98 | 40.317473 | -104.580721 | |
| 9,199.0 | 91.97 | 90.10 | 6,861.7 | 1,313.1 | -41.2 | 1,359,825.80 | 3,256,430.91 | 40.317472 | -104.580380 | |
| 9,294.0 | 92.33 | 90.05 | 6,858.1 | 1,312.9 | 53.7 | 1,359,826.66 | 3,256,525.83 | 40.317472 | -104.580040 | |
| 9,388.0 | 92.20 | 89.92 | 6,854.4 | 1,313.0 | 147.7 | 1,359,827.66 | 3,256,619.75 | 40.317472 | -104.579703 | |
| 9,483.0 | 92.34 | 90.00 | 6,850.7 | 1,313.0 | 242.6 | 1,359,828.71 | 3,256,714.66 | 40.317472 | -104.579363 | |
| 9,578.0 | 92.48 | 90.16 | 6,846.7 | 1,312.9 | 337.5 | 1,359,829.56 | 3,256,809.57 | 40.317472 | -104.579022 | |
| 9,672.0 | 92.57 | 90.18 | 6,842.5 | 1,312.6 | 431.4 | 1,359,830.26 | 3,256,903.47 | 40.317471 | -104.578685 | |
| 9,767.0 | 90.25 | 89.99 | 6,840.2 | 1,312.5 | 526.4 | 1,359,831.10 | 3,256,998.43 | 40.317471 | -104.578345 | |
| 9,861.0 | 90.24 | 90.21 | 6,839.8 | 1,312.3 | 620.4 | 1,359,831.91 | 3,257,092.42 | 40.317470 | -104.578008 | |
| 10,051.0 | 90.28 | 89.99 | 6,838.9 | 1,312.0 | 810.4 | 1,359,833.55 | 3,257,282.40 | 40.317469 | -104.577326 | |
| 10,146.0 | 90.53 | 89.98 | 6,838.3 | 1,312.0 | 905.4 | 1,359,834.56 | 3,257,377.39 | 40.317470 | -104.576986 | |
| 10,241.0 | 89.69 | 90.18 | 6,838.1 | 1,311.9 | 1,000.4 | 1,359,835.42 | 3,257,472.38 | 40.317469 | -104.576645 | |
| 10,336.0 | 89.69 | 90.20 | 6,838.6 | 1,311.6 | 1,095.4 | 1,359,836.09 | 3,257,567.37 | 40.317468 | -104.576304 | |
| 10,431.0 | 89.84 | 90.56 | 6,839.0 | 1,310.9 | 1,190.4 | 1,359,836.44 | 3,257,662.37 | 40.317467 | -104.575964 | |
| 10,526.0 | 89.36 | 90.17 | 6,839.6 | 1,310.3 | 1,285.4 | 1,359,836.82 | 3,257,757.36 | 40.317465 | -104.575623 | |
| 10,621.0 | 89.75 | 90.56 | 6,840.4 | 1,309.7 | 1,380.4 | 1,359,837.20 | 3,257,852.35 | 40.317463 | -104.575283 | |
| 10,810.0 | 89.74 | 90.35 | 6,841.2 | 1,308.2 | 1,569.3 | 1,359,837.66 | 3,258,041.34 | 40.317459 | -104.574605 | |
| 10,904.0 | 89.76 | 89.96 | 6,841.6 | 1,308.0 | 1,663.3 | 1,359,838.38 | 3,258,135.33 | 40.317458 | -104.574268 | |
| 10,999.0 | 89.31 | 90.31 | 6,842.4 | 1,307.7 | 1,758.3 | 1,359,839.14 | 3,258,230.32 | 40.317458 | -104.573927 | |
| 11,094.0 | 89.73 | 91.86 | 6,843.2 | 1,305.9 | 1,853.3 | 1,359,838.33 | 3,258,325.31 | 40.317453 | -104.573586 | |
| 11,189.0 | 89.60 | 90.28 | 6,843.8 | 1,304.2 | 1,948.3 | 1,359,837.54 | 3,258,420.30 | 40.317448 | -104.573246 | |
| 11,283.0 | 89.82 | 90.33 | 6,844.2 | 1,303.7 | 2,042.3 | 1,359,838.02 | 3,258,514.29 | 40.317446 | -104.572909 | |
| 11,378.0 | 89.68 | 90.40 | 6,844.6 | 1,303.1 | 2,137.3 | 1,359,838.40 | 3,258,609.28 | 40.317445 | -104.572568 | |
| 11,473.0 | 89.59 | 89.93 | 6,845.3 | 1,302.8 | 2,232.3 | 1,359,839.11 | 3,258,704.27 | 40.317444 | -104.572227 | |
| 11,567.0 | 89.59 | 89.68 | 6,845.9 | 1,303.1 | 2,326.3 | 1,359,840.40 | 3,258,798.26 | 40.317445 | -104.571890 | |

Ensign

Survey Report - Geographic

| | | | |
|------------------|--------------------------|-------------------------------------|------------------------------------|
| Company: | Chevron DJ Basin | Local Co-ordinate Reference: | Well DRAKE 04NA |
| Project: | SEC.17-T4N-R64W | TVD Reference: | Well @ 4765.5ft (P272 - RKB 28.5') |
| Site: | Drake Pad | MD Reference: | Well @ 4765.5ft (P272 - RKB 28.5') |
| Well: | DRAKE 04NA | North Reference: | True |
| Wellbore: | Drake 04NA | Survey Calculation Method: | Minimum Curvature |
| Design: | Drake 04NA Final Surveys | Database: | US_EDM |

| Survey | | | | | | | | | |
|---------------------|-----------------|-------------|---------------------|------------|------------|---------------------|--------------------|-----------|-------------|
| Measured Depth (ft) | Inclination (°) | Azimuth (°) | Vertical Depth (ft) | +N/-S (ft) | +E/-W (ft) | Map Northing (usft) | Map Easting (usft) | Latitude | Longitude |
| 11,662.0 | 89.86 | 90.16 | 6,846.4 | 1,303.2 | 2,421.3 | 1,359,841.52 | 3,258,893.25 | 40.317445 | -104.571550 |
| 11,757.0 | 90.08 | 90.03 | 6,846.4 | 1,303.1 | 2,516.3 | 1,359,842.35 | 3,258,988.24 | 40.317445 | -104.571209 |
| 11,851.0 | 89.92 | 90.03 | 6,846.4 | 1,303.0 | 2,610.3 | 1,359,843.27 | 3,259,082.23 | 40.317445 | -104.570872 |
| 11,946.0 | 90.19 | 89.68 | 6,846.3 | 1,303.3 | 2,705.3 | 1,359,844.50 | 3,259,177.22 | 40.317445 | -104.570531 |
| 12,040.0 | 90.17 | 89.68 | 6,846.0 | 1,303.8 | 2,799.3 | 1,359,846.00 | 3,259,271.20 | 40.317447 | -104.570194 |
| 12,135.0 | 90.44 | 90.01 | 6,845.5 | 1,304.1 | 2,894.3 | 1,359,847.24 | 3,259,366.19 | 40.317447 | -104.569854 |
| 12,228.0 | 90.25 | 89.51 | 6,845.0 | 1,304.4 | 2,987.3 | 1,359,848.60 | 3,259,459.17 | 40.317448 | -104.569520 |
| 12,322.0 | 90.33 | 89.60 | 6,844.5 | 1,305.2 | 3,081.3 | 1,359,850.30 | 3,259,553.15 | 40.317450 | -104.569183 |
| 12,416.0 | 90.24 | 90.24 | 6,844.0 | 1,305.3 | 3,175.3 | 1,359,851.41 | 3,259,647.14 | 40.317451 | -104.568846 |
| 12,511.0 | 90.38 | 89.74 | 6,843.5 | 1,305.3 | 3,270.3 | 1,359,852.41 | 3,259,742.13 | 40.317451 | -104.568505 |
| 12,606.0 | 90.25 | 89.66 | 6,843.0 | 1,305.8 | 3,365.3 | 1,359,853.89 | 3,259,837.11 | 40.317452 | -104.568165 |
| 12,701.0 | 90.16 | 89.72 | 6,842.7 | 1,306.3 | 3,460.3 | 1,359,855.39 | 3,259,932.09 | 40.317453 | -104.567824 |
| 12,795.0 | 90.19 | 89.42 | 6,842.4 | 1,307.0 | 3,554.3 | 1,359,857.07 | 3,260,026.07 | 40.317455 | -104.567487 |
| 12,890.0 | 90.36 | 89.54 | 6,841.9 | 1,307.9 | 3,649.3 | 1,359,858.92 | 3,260,121.05 | 40.317458 | -104.567146 |
| 12,984.0 | 90.07 | 89.99 | 6,841.6 | 1,308.3 | 3,743.3 | 1,359,860.28 | 3,260,215.03 | 40.317459 | -104.566809 |
| 13,079.0 | 90.12 | 89.77 | 6,841.4 | 1,308.5 | 3,838.3 | 1,359,861.46 | 3,260,310.02 | 40.317459 | -104.566468 |
| 13,174.0 | 90.03 | 89.57 | 6,841.3 | 1,309.0 | 3,933.3 | 1,359,863.00 | 3,260,405.01 | 40.317461 | -104.566128 |
| 13,268.0 | 90.10 | 89.44 | 6,841.2 | 1,309.8 | 4,027.2 | 1,359,864.78 | 3,260,498.98 | 40.317463 | -104.565791 |
| 13,363.0 | 89.96 | 89.91 | 6,841.1 | 1,310.4 | 4,122.2 | 1,359,866.31 | 3,260,593.97 | 40.317464 | -104.565450 |
| 13,458.0 | 89.95 | 89.84 | 6,841.2 | 1,310.6 | 4,217.2 | 1,359,867.50 | 3,260,688.96 | 40.317465 | -104.565109 |
| 13,552.0 | 90.10 | 89.82 | 6,841.2 | 1,310.9 | 4,311.2 | 1,359,868.75 | 3,260,782.94 | 40.317465 | -104.564772 |
| 13,647.0 | 89.91 | 89.85 | 6,841.2 | 1,311.1 | 4,406.2 | 1,359,870.01 | 3,260,877.93 | 40.317466 | -104.564432 |
| 13,742.0 | 91.59 | 90.23 | 6,839.9 | 1,311.1 | 4,501.2 | 1,359,870.93 | 3,260,972.91 | 40.317466 | -104.564091 |
| 13,836.0 | 92.59 | 90.12 | 6,836.5 | 1,310.8 | 4,595.2 | 1,359,871.62 | 3,261,066.84 | 40.317465 | -104.563754 |
| 13,931.0 | 92.67 | 90.13 | 6,832.1 | 1,310.6 | 4,690.1 | 1,359,872.40 | 3,261,161.73 | 40.317464 | -104.563414 |
| 14,026.0 | 92.49 | 89.97 | 6,827.8 | 1,310.5 | 4,785.0 | 1,359,873.30 | 3,261,256.63 | 40.317464 | -104.563074 |
| 14,121.0 | 92.56 | 89.93 | 6,823.7 | 1,310.6 | 4,879.9 | 1,359,874.36 | 3,261,351.52 | 40.317464 | -104.562733 |
| 14,215.0 | 92.67 | 90.36 | 6,819.4 | 1,310.3 | 4,973.8 | 1,359,875.10 | 3,261,445.42 | 40.317464 | -104.562396 |
| 14,310.0 | 92.93 | 90.24 | 6,814.7 | 1,309.9 | 5,068.7 | 1,359,875.59 | 3,261,540.30 | 40.317462 | -104.562056 |
| 14,405.0 | 92.89 | 90.50 | 6,809.9 | 1,309.2 | 5,163.5 | 1,359,875.96 | 3,261,635.17 | 40.317461 | -104.561716 |
| 14,500.0 | 92.76 | 90.08 | 6,805.2 | 1,308.8 | 5,258.4 | 1,359,876.46 | 3,261,730.05 | 40.317459 | -104.561376 |
| 14,594.0 | 92.82 | 90.03 | 6,800.6 | 1,308.7 | 5,352.3 | 1,359,877.35 | 3,261,823.93 | 40.317459 | -104.561039 |
| 14,689.0 | 92.81 | 90.18 | 6,796.0 | 1,308.5 | 5,447.2 | 1,359,878.16 | 3,261,918.81 | 40.317458 | -104.560699 |
| 14,783.0 | 92.65 | 90.29 | 6,791.5 | 1,308.1 | 5,541.1 | 1,359,878.75 | 3,262,012.70 | 40.317457 | -104.560362 |
| 14,878.0 | 92.69 | 90.82 | 6,787.1 | 1,307.2 | 5,636.0 | 1,359,878.81 | 3,262,107.59 | 40.317455 | -104.560022 |
| 14,973.0 | 92.76 | 90.55 | 6,782.6 | 1,306.1 | 5,730.9 | 1,359,878.66 | 3,262,202.48 | 40.317451 | -104.559682 |
| 15,067.0 | 92.93 | 90.37 | 6,777.9 | 1,305.3 | 5,824.7 | 1,359,878.88 | 3,262,296.36 | 40.317449 | -104.559345 |
| 15,162.0 | 92.49 | 90.44 | 6,773.4 | 1,304.6 | 5,919.6 | 1,359,879.19 | 3,262,391.25 | 40.317447 | -104.559005 |
| 15,257.0 | 92.76 | 90.36 | 6,769.1 | 1,304.0 | 6,014.5 | 1,359,879.52 | 3,262,486.14 | 40.317446 | -104.558664 |
| 15,351.0 | 92.89 | 90.42 | 6,764.4 | 1,303.3 | 6,108.4 | 1,359,879.85 | 3,262,580.02 | 40.317444 | -104.558328 |
| 15,446.0 | 92.70 | 90.13 | 6,759.8 | 1,302.9 | 6,203.3 | 1,359,880.38 | 3,262,674.90 | 40.317442 | -104.557987 |
| 15,541.0 | 92.92 | 90.38 | 6,755.1 | 1,302.5 | 6,298.2 | 1,359,880.94 | 3,262,769.78 | 40.317441 | -104.557647 |
| 15,636.0 | 92.36 | 90.33 | 6,750.8 | 1,301.9 | 6,393.1 | 1,359,881.34 | 3,262,864.68 | 40.317439 | -104.557307 |
| 15,731.0 | 92.85 | 90.54 | 6,746.4 | 1,301.1 | 6,488.0 | 1,359,881.60 | 3,262,959.57 | 40.317437 | -104.556967 |
| 15,826.0 | 93.03 | 90.71 | 6,741.6 | 1,300.1 | 6,582.9 | 1,359,881.55 | 3,263,054.44 | 40.317435 | -104.556626 |
| 15,921.0 | 90.79 | 90.61 | 6,738.4 | 1,299.0 | 6,677.8 | 1,359,881.44 | 3,263,149.38 | 40.317431 | -104.556286 |
| 16,015.0 | 90.90 | 90.62 | 6,737.0 | 1,298.0 | 6,771.8 | 1,359,881.41 | 3,263,243.37 | 40.317429 | -104.555949 |
| 16,110.0 | 90.06 | 90.80 | 6,736.2 | 1,296.8 | 6,866.8 | 1,359,881.22 | 3,263,338.36 | 40.317425 | -104.555608 |
| 16,205.0 | 89.88 | 90.32 | 6,736.3 | 1,295.9 | 6,961.8 | 1,359,881.27 | 3,263,433.35 | 40.317423 | -104.555268 |
| 16,299.0 | 90.18 | 90.55 | 6,736.2 | 1,295.2 | 7,055.8 | 1,359,881.53 | 3,263,527.35 | 40.317421 | -104.554930 |
| 16,394.0 | 90.03 | 90.71 | 6,736.0 | 1,294.1 | 7,150.8 | 1,359,881.48 | 3,263,622.34 | 40.317418 | -104.554590 |
| 16,489.0 | 90.09 | 90.53 | 6,735.9 | 1,293.1 | 7,245.7 | 1,359,881.43 | 3,263,717.34 | 40.317415 | -104.554249 |
| 16,583.0 | 90.07 | 90.46 | 6,735.8 | 1,292.3 | 7,339.7 | 1,359,881.60 | 3,263,811.34 | 40.317413 | -104.553912 |
| 16,677.0 | 90.09 | 90.43 | 6,735.7 | 1,291.6 | 7,433.7 | 1,359,881.84 | 3,263,905.33 | 40.317410 | -104.553575 |
| 16,772.0 | 90.02 | 90.61 | 6,735.6 | 1,290.7 | 7,528.7 | 1,359,881.96 | 3,264,000.33 | 40.317408 | -104.553234 |

Ensign

Survey Report - Geographic

| | |
|---|--|
| Company: Chevron DJ Basin | Local Co-ordinate Reference: Well DRAKE 04NA |
| Project: SEC.17-T4N-R64W | TVD Reference: Well @ 4765.5ft (P272 - RKB 28.5') |
| Site: Drake Pad | MD Reference: Well @ 4765.5ft (P272 - RKB 28.5') |
| Well: DRAKE 04NA | North Reference: True |
| Wellbore: Drake 04NA | Survey Calculation Method: Minimum Curvature |
| Design: Drake 04NA Final Surveys | Database: US_EDM |

| Survey | | | | | | | | | |
|--------------------------------------|-----------------|-------------|---------------------|------------|------------|---------------------|--------------------|-----------|-------------|
| Measured Depth (ft) | Inclination (°) | Azimuth (°) | Vertical Depth (ft) | +N/-S (ft) | +E/-W (ft) | Map Northing (usft) | Map Easting (usft) | Latitude | Longitude |
| 16,866.0 | 89.95 | 90.65 | 6,735.6 | 1,289.7 | 7,622.7 | 1,359,881.90 | 3,264,094.32 | 40.317405 | -104.552897 |
| 16,961.0 | 89.93 | 91.06 | 6,735.7 | 1,288.3 | 7,717.7 | 1,359,881.47 | 3,264,189.32 | 40.317401 | -104.552557 |
| 17,055.0 | 89.91 | 90.69 | 6,735.8 | 1,286.8 | 7,811.7 | 1,359,881.01 | 3,264,283.31 | 40.317397 | -104.552220 |
| 17,150.0 | 89.87 | 90.69 | 6,736.0 | 1,285.7 | 7,906.7 | 1,359,880.85 | 3,264,378.31 | 40.317394 | -104.551879 |
| 17,245.0 | 90.25 | 90.70 | 6,735.9 | 1,284.5 | 8,001.7 | 1,359,880.69 | 3,264,473.30 | 40.317391 | -104.551538 |
| 17,340.0 | 90.28 | 90.77 | 6,735.5 | 1,283.3 | 8,096.7 | 1,359,880.45 | 3,264,568.30 | 40.317387 | -104.551198 |
| 17,435.0 | 90.06 | 90.49 | 6,735.2 | 1,282.3 | 8,191.7 | 1,359,880.39 | 3,264,663.29 | 40.317384 | -104.550857 |
| 17,530.0 | 90.08 | 90.42 | 6,735.1 | 1,281.5 | 8,286.7 | 1,359,880.62 | 3,264,758.29 | 40.317382 | -104.550516 |
| 17,624.0 | 90.16 | 90.62 | 6,734.9 | 1,280.7 | 8,380.7 | 1,359,880.75 | 3,264,852.28 | 40.317380 | -104.550179 |
| 17,719.0 | 90.17 | 90.68 | 6,734.6 | 1,279.6 | 8,475.7 | 1,359,880.65 | 3,264,947.28 | 40.317377 | -104.549839 |
| 17,814.0 | 90.07 | 90.50 | 6,734.4 | 1,278.6 | 8,570.7 | 1,359,880.66 | 3,265,042.27 | 40.317374 | -104.549498 |
| 17,909.0 | 90.08 | 90.28 | 6,734.3 | 1,278.0 | 8,665.7 | 1,359,881.00 | 3,265,137.27 | 40.317372 | -104.549157 |
| 18,003.0 | 90.06 | 90.56 | 6,734.2 | 1,277.3 | 8,759.7 | 1,359,881.29 | 3,265,231.26 | 40.317370 | -104.548820 |
| 18,098.0 | 89.96 | 90.32 | 6,734.2 | 1,276.5 | 8,854.7 | 1,359,881.54 | 3,265,326.26 | 40.317368 | -104.548480 |
| 18,193.0 | 89.91 | 90.68 | 6,734.3 | 1,275.7 | 8,949.6 | 1,359,881.70 | 3,265,421.25 | 40.317366 | -104.548139 |
| 18,288.0 | 89.90 | 90.87 | 6,734.4 | 1,274.4 | 9,044.6 | 1,359,881.40 | 3,265,516.25 | 40.317362 | -104.547798 |
| 18,382.0 | 89.91 | 90.60 | 6,734.6 | 1,273.2 | 9,138.6 | 1,359,881.17 | 3,265,610.25 | 40.317358 | -104.547461 |
| 18,476.0 | 90.05 | 90.59 | 6,734.6 | 1,272.2 | 9,232.6 | 1,359,881.17 | 3,265,704.24 | 40.317356 | -104.547124 |
| 18,545.0 | 90.05 | 90.59 | 6,734.6 | 1,271.5 | 9,301.6 | 1,359,881.17 | 3,265,773.24 | 40.317354 | -104.546877 |
| BHL - 825' FNL & 206' FEL | | | | | | | | | |

| Casing Points | | | | | |
|---------------------|---------------------|---------|---------------------|-------------------|--|
| Measured Depth (ft) | Vertical Depth (ft) | Name | Casing Diameter (") | Hole Diameter (") | |
| 50.0 | 50.0 | 13 3/8" | 13-3/8 | 17-1/2 | |

| Design Annotations | | | | | |
|---------------------|---------------------|-------------------|------------|---------------------------|--|
| Measured Depth (ft) | Vertical Depth (ft) | Local Coordinates | | Comment | |
| | | +N/-S (ft) | +E/-W (ft) | | |
| 7,778.0 | 6,908.1 | 1,318.5 | -1,461.4 | LPL - 771' FNL & 425' FEL | |
| 18,545.0 | 6,734.6 | 1,271.5 | 9,301.6 | BHL - 825' FNL & 206' FEL | |

| | | |
|-------------------|--------------------|-------------|
| Checked By: _____ | Approved By: _____ | Date: _____ |
|-------------------|--------------------|-------------|