

Cement Post Job Report

Client: PDC Energy

Well Name: Drake 4NA

API #: 05-123-51833

Job Date: November 20, 2023

Job Type: New Well - 5.5" Production String

Cement Company & Contact: EXERO Well Integrity -
Cheve Meyer 720-239-3819



ROCK SOLID
WELL INTEGRITY
SOLUTIONS

TREATMENT REPORT

CLIENT	WELL	RIG	JOB TYPE	THREAD TYPE	WELLHEAD CONNECTION
PDC Energy	Drake 04NA	Patterson 272	Production	Buttress	5 1/2" Cement Head

WELL MD (FT)	WELL TVD (FT)	DEVIATION (DEG)	NUMBER OF STAGES	BHST (DEG)	BHCT (DEG)
18545	6735	90	1	230	230

PACKER/RETAINER/CIBP/DV TOOL DEPTHS	TOOL TYPE	TOP OF PERFS (FT)	BOTTOM OF PERFS (FT)	NUMBER OF HOLES
3416	PACKER			

CASING/TUBING/DP DETAILS									
STRING TYPE	GRADE	OD"	WT/FT	ID"	OH SIZE"	% EXCESS LEAD	% EXCESS TAIL	TOTAL DEPTH (FT)	
Surface		9.625	36	8.921	13.50			1710	
Production	P-110	5.5	20	4.778	8.5	0	0	18535	
MAXIMUM CASING/TUBING/DP PSI			9888			MAXIMUM ANNULAR PSI			4100

Mud Type	OBM	Rotate Y,N	No	Circulation Data				Water Requirements (bbls)		
Mud ppg	10.8	Rate (rpm)		Circulate Time (hrs)		2		Spacers	160	
Flow Temp	149	Torque Val.		Circulation Rate (bpm)		12		Stage 1 Lead	112	
Vis. Sec/qt	47	Time (hr)		Full Circulation ? (Y,N,P)		Yes		Stage 1 Tail	261	
PV (cP)	12	Pipe Reciprocation		Gas Present (Y,N)		No	Units	0	Stage 2 Lead	
Yield Pt	6	Recip Y,N	No	Centralizers/Plugs				Stage 2 Tail		
10 sec gel	5	Stroke (ft)		Quantity & Type		Customer Provided		Displacement	411	
10 min gel	8	Recip time		Top Plug/Type		Customer Provided		Wash up	20	
30 min gel	10	Stuck ?		Bottom Plug/Type		Customer Provided		Total + 10% Safety	1060	

Preflush & Spacers		Stage 1 Lead - Class G		Stage 1 Tail - Class G		Stage 2 Lead		Stage 2 Tail		Displacement	
Spacer 1	Spacer	Density	12.9	Density	13.7	Density		Density		Fluid Type	Water
	12	Sacks	1276	Sacks	1652	Sacks		Sacks		Dens. ppg	8.33
Volume	160	Vol/bbbls	256.8	Vol/bbbls	403.1	Vol/bbbls	0.0	Vol/bbbls	0.0	Vol. bbl	410.8
Rate	12	Rate	11	Rate	11.5	Rate		Rate		Rate bpm	10.5
Spacer 2		Yield	1.13	Yield	1.37	Yield		Yield		Clay Stay?	No
Density		Gal/Sk	3.68	Gal/Sk	6.63	Gal/Sk		Gal/Sk		Biocide ?	Yes
Volume		% Excess	0	% Excess	0	% Excess		% Excess		Slow @ bbl	391
Rate		TOL (ft)	2017	TOT (ft)	8311	TOL (ft)		TOT (ft)		Bump PSI	3000

Final Displacement (bbbls)	410.8
Bump Plug?	Yes
Final Bump Pressure (psi)	3500
Full Returns throughout job?	Full
Vol. away/Time when returns lost	
Vol. away when returns were regained	
Spacer to Surface?	Yes
Spacer volume returned (bbbls)	66
Cement to surface?	No
Cement volume to surface stage 1	-
Cement volume to surface stage 2	-

Surface Top Out Details-Pumped		Job Summary Additional Chems Used	
Cement Type		MFC 47 (gal)	70
Dens. ppg	NA	MFC 67 (gal)	168
Sacks qty	NA	Defoamer (gal)	20
Gal/sk	NA	Biocide (gal)	20
Yield	NA	Corr. Inhib (gal)	0
Lbs. of chloride used	NA	Fiber (lbs)	290
Top out pipe used ?	NA	Chloride (lbs)	0
Feet of top out pipe	NA	Retarder (lbs)	0
Annulus holding?		Clay Stabilizer (gal)	0
Sodium Silicate Used		Other	0

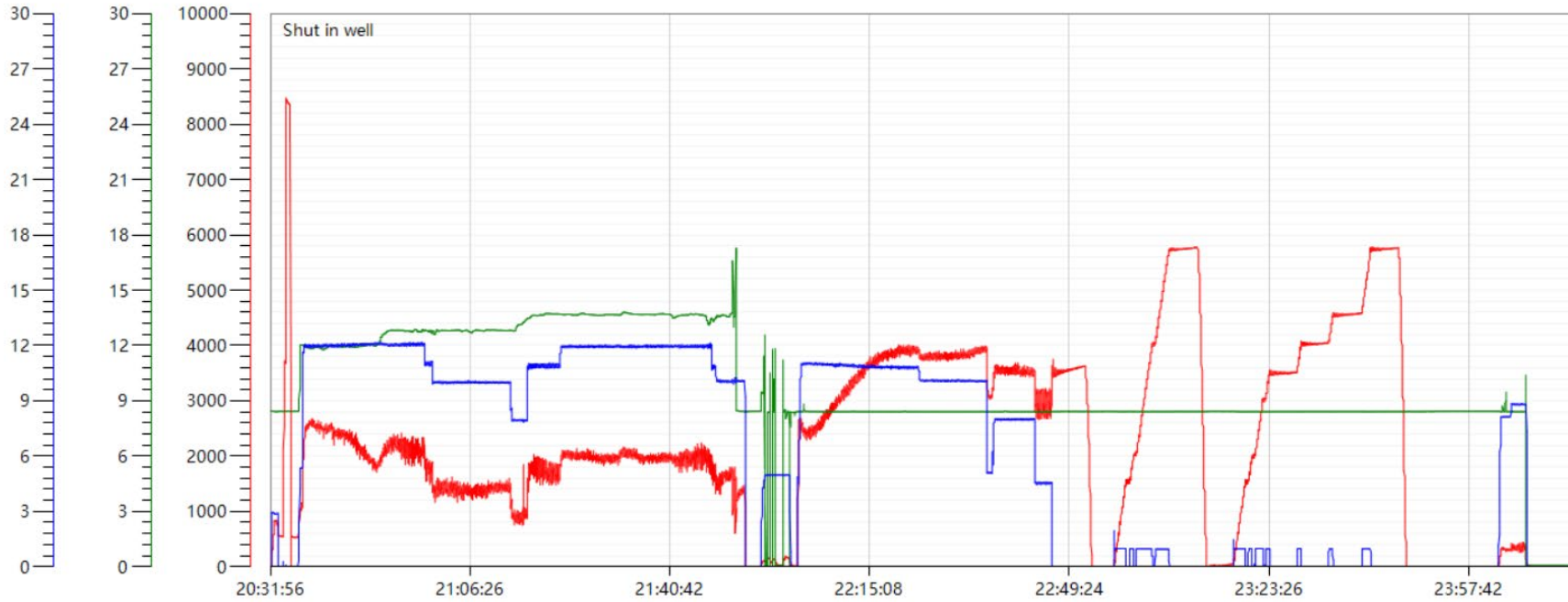
JOB LOG

CLIENT	WELL	RIG	JOB TYPE	START DATE	Ambient Conditions		
PDC Energy	Drake 04NA	Patterson 272	Production	11/20/2023	Temp / Hum / Air Press 40 Deg F / 53% / 25.33 in		
DATE (dd/mm)	TIME (hh:mm)	DENSITY (ppg)	RATE (bpm)	VOL. (bbl)	TOTAL VOL.	PRESSURE	TREATMENT COMMENTS
11/20/2023	5:30:00 AM						CREW CALLED OUT FOR ON LOCATION TIME OF 13:30 11/20/2023
11/20/2023	2:30:00 PM						CREW ARRIVES AT CUSTOMER LOCATION
11/20/2023	2:30:00 PM						WAITING ON RIG TO FINISH RUNNING CASING
11/20/2023	6:20:00 PM						RIG UP ALL IRON AND HOSES
11/20/2023	6:20:00 PM						RIG CIRCULATING
11/20/2023	8:00:00 PM						SAFETY MEETING WITH EXERO CREW, RIG CREW, TOOL REP, AND CUSTOMER REP
11/20/2023	8:25:00 PM						LOAD BOTTOM PLUG, TIE INTO WELL
11/20/2023	8:30:00 PM	8.34	3.0	3	3	830	FILL LINES WITH 3 BBLS FRESH WATER
11/20/2023	8:32:00 PM					8200	PRESSURE TEST PUMP AND LINES
11/20/2023	8:34:00 PM	12	12.0	0	0	2200	BEGIN PUMPING 12 PPG SPACER + SURFACTANT + FIBER
11/20/2023	8:39:00 PM	12	12.0	50	50	2400	PUMPING SPACER
11/20/2023	8:43:00 PM	12	12.0	50	100	2300	PUMPING SPACER
11/20/2023	8:49:00 PM	12	12.0	60	160	1900	PUMPING SPACER
11/20/2023	8:49:00 PM	12.9	12.0	0	0	1890	BEGIN PUMPING 12.9 PPG LEAD CEMENT, DENSITY VERIFIED WITH PRESSURIZED MUD SCALE
11/20/2023	8:53:00 PM	12.9	12.0	50	50	2090	PUMPING LEAD CEMENT
11/20/2023	8:57:00 PM	12.9	11.0	50	100	1600	PUMPING LEAD CEMENT
11/20/2023	9:02:00 PM	12.9	10.0	50	150	1380	PUMPING LEAD CEMENT
11/20/2023	9:07:00 PM	12.9	10.0	50	200	1390	PUMPING LEAD CEMENT
11/20/2023	9:14:00 PM	12.9	8.0	56.8	256.8	1000	PUMPING LEAD CEMENT
11/20/2023	9:14:00 PM	13.7	11.0	0	0	1700	BEGIN PUMPING 13.7 PPG TAIL CEMENT, DENSITY VERIFIED WITH PRESSURIZED MUD SCALE
11/20/2023	9:18:00 PM	13.7	11.0	50	50	1800	PUMPING TAIL CEMENT
11/20/2023	9:23:00 PM	13.7	12.0	50	100	2000	PUMPING TAIL CEMENT
11/20/2023	9:27:00 PM	13.7	12.0	50	150	1900	PUMPING TAIL CEMENT
11/20/2023	9:35:00 PM	13.7	12.0	50	200	1943	PUMPING TAIL CEMENT
11/20/2023	9:39:00 PM	13.7	12.0	50	250	1995	PUMPING TAIL CEMENT
11/20/2023	9:43:00 PM	13.7	12.0	50	300	1875	PUMPING TAIL CEMENT
11/20/2023	9:47:00 PM	13.7	11.0	50	350	1705	PUMPING TAIL CEMENT
11/20/2023	9:50:00 PM	13.7	10.0	53.1	403.1	1610	PUMPING TAIL CEMENT
11/20/2023	9:50:00 PM	8.34	10.0	15	15	1200	PUMP 15 BBLS SUGAR WATER FOR WET SHOE
11/20/2023	9:51:00 PM						SHUT DOWN, WASH UP PUMP
11/20/2023	10:00:00 PM	8.34	11.0	0	0	2600	DROP TOP PLUG, BEGIN WATER + BIOCIDES DISPLACEMENT
11/20/2023	10:05:00 PM	8.34	11.0	50	50	2610	PUMPING DISPLACEMENT
11/20/2023	10:10:00 PM	8.34	11.0	50	100	3400	PUMPING DISPLACEMENT
11/20/2023	10:15:00 PM	8.34	11.0	50	150	3800	PUMPING DISPLACEMENT
11/20/2023	10:20:00 PM	8.34	11.0	50	200	3900	PUMPING DISPLACEMENT
11/20/2023	10:25:00 PM	8.34	10.0	50	250	3800	PUMPING DISPLACEMENT
11/20/2023	10:30:00 PM	8.34	10.0	50	300	3850	PUMPING DISPLACEMENT
11/20/2023	10:36:00 PM	8.34	8.0	50	350	3500	PUMPING DISPLACEMENT. SPACER TO SURFACE AT 345 BBLS PUMPED. 66 BBLS TO SURFACE
11/20/2023	10:41:00 PM	8.34	4.5	50	391	3520	PUMPING DISPLACEMENT
11/20/2023	10:44:00 PM	8.34	4.5	19.8	410.8	3000	PUMPING DISPLACEMENT
11/20/2023	10:44:00 PM					3500	LAND PLUG. FCP - 3000 PSI, BUMPED TO 3500 PSI
11/20/2023	10:49:00 PM						CHECK FLOATS. FLOATS HELD, 5 BBLS BACK
11/20/2023	10:54:00 PM	8.34	1.0			5700	SET PACKER AS PER TOOL REP INSTRUCTIONS
11/20/2023	11:54:00 PM						RELEASE PRESSURE
11/21/2023	12:00:00 AM	8.34					FLUSH STACK
11/21/2023	12:05:00 AM						RIG DOWN ALL IRON AND HOSES
11/21/2023	1:00:00 AM						DEPART CUSTOMER LOCATION

Drake 4N Production Pump Chart – Pressure / Rate / Density

Chart Report

— pressure1 psi — density backup lbs/gal — Combined Rate





Centralizer Depths

Well Name: Drake 04NA

Production, Set Depth: 18,535.0ftKB

API 05123518330000		Surface Legal Location SWNW 17 4N 64W		Field Name Wattenberg		State CO		Well Configuration Type Horizontal			
Ground Elevation (ft) 4,737.00		Original KB Elevation (ft) 4,765.50		KB-Ground Distance (ft) 28.50		Spud Date 11/17/2023 02:30		Rig Release Date 11/21/2023 02:30		On Production Date Abandon Date	

Casing Run Tally

Run #	Ref #	Item Des	OD (in)	Wt (lb/ft)	Grade	Run?	Len (ft)	Centralized?	Ext Jwry	Connections	Top (ftKB)	Cum Len (ft)
7	1	Casing Joints	5 1/2	20.00	P-110	Yes	41.50	Yes			18,458.5	76.51
9	3	Casing Joints	5 1/2	20.00	P-110	Yes	44.22	Yes			18,370.0	164.96
11	5	Casing Joints	5 1/2	20.00	P-110	Yes	43.87	Yes			18,281.9	253.06
13	7	Casing Joints	5 1/2	20.00	P-110	Yes	43.30	Yes			18,196.8	338.23
15	9	Casing Joints	5 1/2	20.00	P-110	Yes	42.65	Yes			18,110.4	424.65
17		Marker Joint F	5 1/2	20.00	P-110	Yes	22.44	Yes			18,043.9	491.08
19	12	Casing Joints	5 1/2	20.00	P-110	Yes	43.96	Yes			17,957.2	577.81
21	14	Casing Joints	5 1/2	20.00	P-110	Yes	42.90	Yes			17,869.9	665.06
23	16	Casing Joints	5 1/2	20.00	P-110	Yes	42.51	Yes			17,783.5	751.52
25	18	Casing Joints	5 1/2	20.00	P-110	Yes	43.66	Yes			17,696.5	838.52
27	20	Casing Joints	5 1/2	20.00	P-110	Yes	42.53	Yes			17,610.1	924.91
29	22	Casing Joints	5 1/2	20.00	P-110	Yes	43.85	Yes			17,524.6	1,010.43
31	24	Casing Joints	5 1/2	20.00	P-110	Yes	43.82	Yes			17,437.8	1,097.22
33	26	Casing Joints	5 1/2	20.00	P-110	Yes	44.44	Yes			17,349.5	1,185.54
35	28	Casing Joints	5 1/2	20.00	P-110	Yes	43.91	Yes			17,261.0	1,274.00
37	30	Casing Joints	5 1/2	20.00	P-110	Yes	44.04	Yes			17,173.0	1,362.01
39	32	Casing Joints	5 1/2	20.00	P-110	Yes	43.91	Yes			17,084.0	1,451.05
41	34	Casing Joints	5 1/2	20.00	P-110	Yes	42.55	Yes			16,998.3	1,536.67
43	36	Casing Joints	5 1/2	20.00	P-110	Yes	43.28	Yes			16,911.0	1,623.98
45	38	Casing Joints	5 1/2	20.00	P-110	Yes	43.95	Yes			16,826.1	1,708.86
47	40	Casing Joints	5 1/2	20.00	P-110	Yes	42.26	Yes			16,740.2	1,794.77
49	42	Casing Joints	5 1/2	20.00	P-110	Yes	45.14	Yes			16,651.1	1,883.89
51	44	Casing Joints	5 1/2	20.00	P-110	Yes	44.25	Yes			16,566.7	1,968.29
53	46	Casing Joints	5 1/2	20.00	P-110	Yes	43.86	Yes			16,477.7	2,057.26
55	48	Casing Joints	5 1/2	20.00	P-110	Yes	43.94	Yes			16,389.9	2,145.14
57	50	Casing Joints	5 1/2	20.00	P-110	Yes	43.60	Yes			16,303.2	2,231.76
59	52	Casing Joints	5 1/2	20.00	P-110	Yes	39.08	Yes			16,222.7	2,312.30
61	54	Casing Joints	5 1/2	20.00	P-110	Yes	43.86	Yes			16,135.4	2,399.58
63	56	Casing Joints	5 1/2	20.00	P-110	Yes	43.53	Yes			16,049.5	2,485.52
65	58	Casing Joints	5 1/2	20.00	P-110	Yes	43.87	Yes			15,961.7	2,573.34
67	60	Casing Joints	5 1/2	20.00	P-110	Yes	43.59	Yes			15,874.5	2,660.53



Centralizer Depths

Well Name: Drake 04NA

Production, Set Depth: 18,535.0ftKB

API 05123518330000		Surface Legal Location SWNW 17 4N 64W		Field Name Wattenberg		State CO		Well Configuration Type Horizontal			
Ground Elevation (ft) 4,737.00	Original KB Elevation (ft) 4,765.50	KB-Ground Distance (ft) 28.50	Spud Date 11/17/2023 02:30	Rig Release Date 11/21/2023 02:30	On Production Date	Abandon Date					

Casing Run Tally												
Run #	Ref #	Item Des	OD (in)	Wt (lb/ft)	Grade	Run?	Len (ft)	Centralized?	Ext Jwry	Connections	Top (ftKB)	Cum Len (ft)
69	62	Casing Joints	5 1/2	20.00	P-110	Yes	42.51	Yes			15,788.3	2,746.70
71	64	Casing Joints	5 1/2	20.00	P-110	Yes	42.58	Yes			15,701.7	2,833.33
73	66	Casing Joints	5 1/2	20.00	P-110	Yes	41.93	Yes			15,615.9	2,919.11
75	68	Casing Joints	5 1/2	20.00	P-110	Yes	36.96	Yes			15,534.7	3,000.28
77	70	Casing Joints	5 1/2	20.00	P-110	Yes	42.25	Yes			15,448.3	3,086.75
79	72	Casing Joints	5 1/2	20.00	P-110	Yes	44.66	Yes			15,360.4	3,174.58
81	74	Casing Joints	5 1/2	20.00	P-110	Yes	42.07	Yes			15,274.3	3,260.67
83	76	Casing Joints	5 1/2	20.00	P-110	Yes	44.22	Yes			15,185.9	3,349.09
85	78	Casing Joints	5 1/2	20.00	P-110	Yes	37.67	Yes			15,104.2	3,430.81
87	80	Casing Joints	5 1/2	20.00	P-110	Yes	42.35	Yes			15,017.6	3,517.41
89	82	Casing Joints	5 1/2	20.00	P-110	Yes	42.30	Yes			14,931.2	3,603.77
91	84	Casing Joints	5 1/2	20.00	P-110	Yes	44.02	Yes			14,845.8	3,689.24
93	86	Casing Joints	5 1/2	20.00	P-110	Yes	44.34	Yes			14,757.4	3,777.60
95	88	Casing Joints	5 1/2	20.00	P-110	Yes	42.70	Yes			14,670.8	3,864.23
97	90	Casing Joints	5 1/2	20.00	P-110	Yes	43.94	Yes			14,582.9	3,952.12
99	92	Casing Joints	5 1/2	20.00	P-110	Yes	44.24	Yes			14,494.2	4,040.76
101	94	Casing Joints	5 1/2	20.00	P-110	Yes	38.40	Yes			14,417.6	4,117.41
103	96	Casing Joints	5 1/2	20.00	P-110	Yes	41.99	Yes			14,332.0	4,203.05
105	98	Casing Joints	5 1/2	20.00	P-110	Yes	42.29	Yes			14,246.3	4,288.74
107	100	Casing Joints	5 1/2	20.00	P-110	Yes	42.70	Yes			14,161.8	4,373.24
109	102	Casing Joints	5 1/2	20.00	P-110	Yes	44.24	Yes			14,073.6	4,461.40
111	104	Casing Joints	5 1/2	20.00	P-110	Yes	44.06	Yes			13,985.3	4,549.71
113	106	Casing Joints	5 1/2	20.00	P-110	Yes	44.21	Yes			13,897.1	4,637.92
115	108	Casing Joints	5 1/2	20.00	P-110	Yes	44.50	Yes			13,811.3	4,723.67
117	110	Casing Joints	5 1/2	20.00	P-110	Yes	44.40	Yes			13,722.9	4,812.08
119	112	Casing Joints	5 1/2	20.00	P-110	Yes	43.98	Yes			13,636.9	4,898.10
121	114	Casing Joints	5 1/2	20.00	P-110	Yes	44.67	Yes			13,548.3	4,986.70
123	116	Casing Joints	5 1/2	20.00	P-110	Yes	40.50	Yes			13,463.5	5,071.55
125	118	Casing Joints	5 1/2	20.00	P-110	Yes	44.04	Yes			13,375.6	5,159.44
127	120	Casing Joints	5 1/2	20.00	P-110	Yes	41.25	Yes			13,290.4	5,244.65
129	122	Casing Joints	5 1/2	20.00	P-110	Yes	44.04	Yes			13,206.2	5,328.79



Centralizer Depths

Well Name: Drake 04NA

Production, Set Depth: 18,535.0ftKB

API 05123518330000		Surface Legal Location SWNW 17 4N 64W		Field Name Wattenberg		State CO		Well Configuration Type Horizontal			
Ground Elevation (ft) 4,737.00	Original KB Elevation (ft) 4,765.50	KB-Ground Distance (ft) 28.50	Spud Date 11/17/2023 02:30	Rig Release Date 11/21/2023 02:30	On Production Date	Abandon Date					

Casing Run Tally

Run #	Ref #	Item Des	OD (in)	Wt (lb/ft)	Grade	Run?	Len (ft)	Centralized?	Ext Jwry	Connections	Top (ftKB)	Cum Len (ft)
131	123	Casing Joints	5 1/2	20.00	P-110	Yes	44.03	Yes			13,139.4	5,395.57
133	125	Casing Joints	5 1/2	20.00	P-110	Yes	44.30	Yes			13,052.6	5,482.43
135	127	Casing Joints	5 1/2	20.00	P-110	Yes	42.02	Yes			12,970.8	5,564.23
137	129	Casing Joints	5 1/2	20.00	P-110	Yes	42.01	Yes			12,885.1	5,649.90
139	131	Casing Joints	5 1/2	20.00	P-110	Yes	43.85	Yes			12,797.2	5,737.80
141	133	Casing Joints	5 1/2	20.00	P-110	Yes	42.09	Yes			12,715.9	5,819.07
143	135	Casing Joints	5 1/2	20.00	P-110	Yes	43.96	Yes			12,630.2	5,904.81
145	137	Casing Joints	5 1/2	20.00	P-110	Yes	43.26	Yes			12,543.8	5,991.18
147	139	Casing Joints	5 1/2	20.00	P-110	Yes	42.00	Yes			12,460.1	6,074.95
149	141	Casing Joints	5 1/2	20.00	P-110	Yes	42.91	Yes			12,381.5	6,153.49
151	143	Casing Joints	5 1/2	20.00	P-110	Yes	43.86	Yes			12,295.9	6,239.10
153	145	Casing Joints	5 1/2	20.00	P-110	Yes	44.04	Yes			12,207.4	6,327.60
155	147	Casing Joints	5 1/2	20.00	P-110	Yes	44.06	Yes			12,121.3	6,413.68
157	149	Casing Joints	5 1/2	20.00	P-110	Yes	42.96	Yes			12,034.1	6,500.87
159	151	Casing Joints	5 1/2	20.00	P-110	Yes	44.04	Yes			11,946.3	6,588.74
161	153	Casing Joints	5 1/2	20.00	P-110	Yes	43.30	Yes			11,859.7	6,675.32
163	155	Casing Joints	5 1/2	20.00	P-110	Yes	44.02	Yes			11,772.4	6,762.65
165	157	Casing Joints	5 1/2	20.00	P-110	Yes	44.49	Yes			11,684.3	6,850.75
167	159	Casing Joints	5 1/2	20.00	P-110	Yes	44.01	Yes			11,596.2	6,938.80
169	161	Casing Joints	5 1/2	20.00	P-110	Yes	43.96	Yes			11,514.9	7,020.12
171	163	Casing Joints	5 1/2	20.00	P-110	Yes	44.49	Yes			11,428.6	7,106.43
173	165	Casing Joints	5 1/2	20.00	P-110	Yes	44.04	Yes			11,340.3	7,194.72
175	167	Casing Joints	5 1/2	20.00	P-110	Yes	38.26	Yes			11,264.1	7,270.90
177	169	Casing Joints	5 1/2	20.00	P-110	Yes	43.65	Yes			11,176.2	7,358.76
179	171	Casing Joints	5 1/2	20.00	P-110	Yes	42.83	Yes			11,097.0	7,437.99
181	173	Casing Joints	5 1/2	20.00	P-110	Yes	42.93	Yes			11,009.9	7,525.07
183	175	Casing Joints	5 1/2	20.00	P-110	Yes	41.72	Yes			10,929.5	7,605.54
185	177	Casing Joints	5 1/2	20.00	P-110	Yes	43.22	Yes			10,843.7	7,691.28
187	179	Casing Joints	5 1/2	20.00	P-110	Yes	42.94	Yes			10,757.5	7,777.53
189	181	Casing Joints	5 1/2	20.00	P-110	Yes	43.08	Yes			10,676.0	7,859.02
191	183	Casing Joints	5 1/2	20.00	P-110	Yes	42.70	Yes			10,590.6	7,944.43



Centralizer Depths

Well Name: Drake 04NA

Production, Set Depth: 18,535.0ftKB

API 05123518330000		Surface Legal Location SWNW 17 4N 64W		Field Name Wattenberg		State CO		Well Configuration Type Horizontal			
Ground Elevation (ft) 4,737.00		Original KB Elevation (ft) 4,765.50		KB-Ground Distance (ft) 28.50		Spud Date 11/17/2023 02:30		Rig Release Date 11/21/2023 02:30		On Production Date Abandon Date	

Casing Run Tally												
Run #	Ref #	Item Des	OD (in)	Wt (lb/ft)	Grade	Run?	Len (ft)	Centralized?	Ext Jwry	Connections	Top (ftKB)	Cum Len (ft)
193	185	Casing Joints	5 1/2	20.00	P-110	Yes	42.34	Yes			10,505.8	8,029.24
195	187	Casing Joints	5 1/2	20.00	P-110	Yes	44.52	Yes			10,417.2	8,117.80
197	189	Casing Joints	5 1/2	20.00	P-110	Yes	40.80	Yes			10,334.9	8,200.15
199	191	Casing Joints	5 1/2	20.00	P-110	Yes	36.25	Yes			10,255.6	8,279.41
201	193	Casing Joints	5 1/2	20.00	P-110	Yes	43.72	Yes			10,171.7	8,363.31
203	195	Casing Joints	5 1/2	20.00	P-110	Yes	44.53	Yes			10,086.8	8,448.19
205	197	Casing Joints	5 1/2	20.00	P-110	Yes	44.55	Yes			10,003.0	8,532.00
207	199	Casing Joints	5 1/2	20.00	P-110	Yes	44.55	Yes			9,913.4	8,621.61
209	201	Casing Joints	5 1/2	20.00	P-110	Yes	44.50	Yes			9,826.3	8,708.71
211	203	Casing Joints	5 1/2	20.00	P-110	Yes	44.55	Yes			9,739.9	8,795.06
213	205	Casing Joints	5 1/2	20.00	P-110	Yes	42.76	Yes			9,658.0	8,877.05
215	207	Casing Joints	5 1/2	20.00	P-110	Yes	43.13	Yes			9,570.6	8,964.42
217	209	Casing Joints	5 1/2	20.00	P-110	Yes	38.93	Yes			9,488.4	9,046.64
219	211	Casing Joints	5 1/2	20.00	P-110	Yes	42.54	Yes			9,404.3	9,130.73
221	213	Casing Joints	5 1/2	20.00	P-110	Yes	40.10	Yes			9,319.6	9,215.36
223	215	Casing Joints	5 1/2	20.00	P-110	Yes	44.04	Yes			9,231.6	9,303.37
225	217	Casing Joints	5 1/2	20.00	P-110	Yes	37.45	Yes			9,151.6	9,383.37
227	219	Casing Joints	5 1/2	20.00	P-110	Yes	42.09	Yes			9,065.3	9,469.69
229	221	Casing Joints	5 1/2	20.00	P-110	Yes	43.10	Yes			8,977.9	9,557.09
231	223	Casing Joints	5 1/2	20.00	P-110	Yes	37.94	Yes			8,906.0	9,629.05
233	225	Casing Joints	5 1/2	20.00	P-110	Yes	43.33	Yes			8,818.4	9,716.61
235	227	Casing Joints	5 1/2	20.00	P-110	Yes	38.55	Yes			8,735.6	9,799.36
237	228	Casing Joints	5 1/2	20.00	P-110	Yes	41.16	Yes			8,692.8	9,842.17
239	230	Casing Joints	5 1/2	20.00	P-110	Yes	44.25	Yes			8,609.9	9,925.06
241	232	Casing Joints	5 1/2	20.00	P-110	Yes	41.41	Yes			8,525.6	10,009.37
243	234	Casing Joints	5 1/2	20.00	P-110	Yes	44.48	Yes			8,442.4	10,092.56
245	236	Casing Joints	5 1/2	20.00	P-110	Yes	42.75	Yes			8,362.7	10,172.27
247	238	Casing Joints	5 1/2	20.00	P-110	Yes	40.98	Yes			8,277.5	10,257.47
249	240	Casing Joints	5 1/2	20.00	P-110	Yes	43.28	Yes			8,193.4	10,341.61
251	242	Casing Joints	5 1/2	20.00	P-110	Yes	39.94	Yes			8,109.0	10,425.99
253	244	Casing Joints	5 1/2	20.00	P-110	Yes	37.97	Yes			8,031.9	10,503.14



Centralizer Depths

Well Name: Drake 04NA

Production, Set Depth: 18,535.0ftKB

API 05123518330000		Surface Legal Location SWNW 17 4N 64W		Field Name Wattenberg		State CO		Well Configuration Type Horizontal			
Ground Elevation (ft) 4,737.00	Original KB Elevation (ft) 4,765.50	KB-Ground Distance (ft) 28.50	Spud Date 11/17/2023 02:30	Rig Release Date 11/21/2023 02:30	On Production Date	Abandon Date					

Casing Run Tally												
Run #	Ref #	Item Des	OD (in)	Wt (lb/ft)	Grade	Run?	Len (ft)	Centralized?	Ext Jwry	Connections	Top (ftKB)	Cum Len (ft)
255	246	Casing Joints	5 1/2	20.00	P-110	Yes	44.74	Yes			7,944.1	10,590.89
257	248	Casing Joints	5 1/2	20.00	P-110	Yes	41.65	Yes			7,858.0	10,677.05
258		Marker Joint H	5 1/2	20.00	P-110	Yes	21.78	Yes			7,836.2	10,698.83
259	249	Casing Joints	5 1/2	20.00	P-110	Yes	43.83	Yes			7,792.3	10,742.66
260	250	Casing Joints	5 1/2	20.00	P-110	Yes	42.84	Yes			7,749.5	10,785.50
261	251	Casing Joints	5 1/2	20.00	P-110	Yes	44.35	Yes			7,705.2	10,829.85
262	252	Casing Joints	5 1/2	20.00	P-110	Yes	38.86	Yes			7,666.3	10,868.71
263	253	Casing Joints	5 1/2	20.00	P-110	Yes	44.21	Yes			7,622.1	10,912.92
264	254	Casing Joints	5 1/2	20.00	P-110	Yes	43.65	Yes			7,578.4	10,956.57
265	255	Casing Joints	5 1/2	20.00	P-110	Yes	44.48	Yes			7,534.0	11,001.05
266	256	Casing Joints	5 1/2	20.00	P-110	Yes	44.73	Yes			7,489.2	11,045.78
267	257	Casing Joints	5 1/2	20.00	P-110	Yes	44.25	Yes			7,445.0	11,090.03
268	258	Casing Joints	5 1/2	20.00	P-110	Yes	43.03	Yes			7,401.9	11,133.06
269	259	Casing Joints	5 1/2	20.00	P-110	Yes	44.94	Yes			7,357.0	11,178.00
270	260	Casing Joints	5 1/2	20.00	P-110	Yes	40.80	Yes			7,316.2	11,218.80
271	261	Casing Joints	5 1/2	20.00	P-110	Yes	44.01	Yes			7,272.2	11,262.81
272	262	Casing Joints	5 1/2	20.00	P-110	Yes	42.95	Yes			7,229.2	11,305.76
273	263	Casing Joints	5 1/2	20.00	P-110	Yes	42.57	Yes			7,186.7	11,348.33
274	264	Casing Joints	5 1/2	20.00	P-110	Yes	43.00	Yes			7,143.7	11,391.33
275	265	Casing Joints	5 1/2	20.00	P-110	Yes	39.26	Yes			7,104.4	11,430.59
276	266	Casing Joints	5 1/2	20.00	P-110	Yes	44.26	Yes			7,060.2	11,474.85
277	267	Casing Joints	5 1/2	20.00	P-110	Yes	42.84	Yes			7,017.3	11,517.69
278	268	Casing Joints	5 1/2	20.00	P-110	Yes	44.47	Yes			6,972.8	11,562.16
279	269	Casing Joints	5 1/2	20.00	P-110	Yes	42.85	Yes			6,930.0	11,605.01
280	270	Casing Joints	5 1/2	20.00	P-110	Yes	41.30	Yes			6,888.7	11,646.31
281	271	Casing Joints	5 1/2	20.00	P-110	Yes	43.55	Yes			6,845.1	11,689.86
282	272	Casing Joints	5 1/2	20.00	P-110	Yes	45.06	Yes			6,800.1	11,734.92
283	273	Casing Joints	5 1/2	20.00	P-110	Yes	42.84	Yes			6,757.2	11,777.76
284	274	Casing Joints	5 1/2	20.00	P-110	Yes	42.78	Yes			6,714.5	11,820.54
285	275	Casing Joints	5 1/2	20.00	P-110	Yes	43.18	Yes			6,671.3	11,863.72
286	276	Casing Joints	5 1/2	20.00	P-110	Yes	42.21	Yes			6,629.1	11,905.93



Centralizer Depths

Well Name: Drake 04NA

Production, Set Depth: 18,535.0ftKB

API 05123518330000		Surface Legal Location SWNW 17 4N 64W		Field Name Wattenberg		State CO		Well Configuration Type Horizontal			
Ground Elevation (ft) 4,737.00	Original KB Elevation (ft) 4,765.50	KB-Ground Distance (ft) 28.50	Spud Date 11/17/2023 02:30	Rig Release Date 11/21/2023 02:30	On Production Date	Abandon Date					

Casing Run Tally												
Run #	Ref #	Item Des	OD (in)	Wt (lb/ft)	Grade	Run?	Len (ft)	Centralized?	Ext Jwry	Connections	Top (ftKB)	Cum Len (ft)
287	277	Casing Joints	5 1/2	20.00	P-110	Yes	43.41	Yes			6,585.7	11,949.34
288	278	Casing Joints	5 1/2	20.00	P-110	Yes	41.53	Yes			6,544.1	11,990.87
289		Marker Joint I	5 1/2	20.00	P-110	Yes	20.04	Yes			6,524.1	12,010.91
290	279	Casing Joints	5 1/2	20.00	P-110	Yes	41.57	Yes			6,482.5	12,052.48
291	280	Casing Joints	5 1/2	20.00	P-110	Yes	43.08	Yes			6,439.4	12,095.56
292	281	Casing Joints	5 1/2	20.00	P-110	Yes	43.02	Yes			6,396.4	12,138.58
293	282	Casing Joints	5 1/2	20.00	P-110	Yes	42.27	Yes			6,354.2	12,180.85
294	283	Casing Joints	5 1/2	20.00	P-110	Yes	44.54	Yes			6,309.6	12,225.39
295	284	Casing Joints	5 1/2	20.00	P-110	Yes	42.38	Yes			6,267.2	12,267.77
296	285	Casing Joints	5 1/2	20.00	P-110	Yes	44.85	Yes			6,222.4	12,312.62
297	286	Casing Joints	5 1/2	20.00	P-110	Yes	44.96	Yes			6,177.4	12,357.58
298	287	Casing Joints	5 1/2	20.00	P-110	Yes	42.83	Yes			6,134.6	12,400.41
299	288	Casing Joints	5 1/2	20.00	P-110	Yes	43.60	Yes			6,091.0	12,444.01
300	289	Casing Joints	5 1/2	20.00	P-110	Yes	43.02	Yes			6,048.0	12,487.03
301	290	Casing Joints	5 1/2	20.00	P-110	Yes	44.45	Yes			6,003.5	12,531.48
302	291	Casing Joints	5 1/2	20.00	P-110	Yes	45.06	Yes			5,958.5	12,576.54
303	292	Casing Joints	5 1/2	20.00	P-110	Yes	44.32	Yes			5,914.1	12,620.86
304	293	Casing Joints	5 1/2	20.00	P-110	Yes	43.85	Yes			5,870.3	12,664.71
305	294	Casing Joints	5 1/2	20.00	P-110	Yes	45.56	Yes			5,824.7	12,710.27
306	295	Casing Joints	5 1/2	20.00	P-110	Yes	42.41	Yes			5,782.3	12,752.68
307	296	Casing Joints	5 1/2	20.00	P-110	Yes	35.44	Yes			5,746.9	12,788.12
308	297	Casing Joints	5 1/2	20.00	P-110	Yes	41.32	Yes			5,705.6	12,829.44
309	298	Casing Joints	5 1/2	20.00	P-110	Yes	43.35	Yes			5,662.2	12,872.79
310	299	Casing Joints	5 1/2	20.00	P-110	Yes	44.65	Yes			5,617.6	12,917.44
311	300	Casing Joints	5 1/2	20.00	P-110	Yes	42.14	Yes			5,575.4	12,959.58
312	301	Casing Joints	5 1/2	20.00	P-110	Yes	42.85	Yes			5,532.6	13,002.43
313	302	Casing Joints	5 1/2	20.00	P-110	Yes	45.23	Yes			5,487.3	13,047.66
314	303	Casing Joints	5 1/2	20.00	P-110	Yes	44.05	Yes			5,443.3	13,091.71
315	304	Casing Joints	5 1/2	20.00	P-110	Yes	38.78	Yes			5,404.5	13,130.49
316	305	Casing Joints	5 1/2	20.00	P-110	Yes	43.03	Yes			5,361.5	13,173.52
317	306	Casing Joints	5 1/2	20.00	P-110	Yes	43.50	Yes			5,318.0	13,217.02



Centralizer Depths

Well Name: Drake 04NA

Production, Set Depth: 18,535.0ftKB

API 05123518330000		Surface Legal Location SWNW 17 4N 64W		Field Name Wattenberg		State CO		Well Configuration Type Horizontal			
Ground Elevation (ft) 4,737.00	Original KB Elevation (ft) 4,765.50	KB-Ground Distance (ft) 28.50	Spud Date 11/17/2023 02:30	Rig Release Date 11/21/2023 02:30	On Production Date	Abandon Date					

Casing Run Tally												
Run #	Ref #	Item Des	OD (in)	Wt (lb/ft)	Grade	Run?	Len (ft)	Centralized?	Ext Jwry	Connections	Top (ftKB)	Cum Len (ft)
318	307	Casing Joints	5 1/2	20.00	P-110	Yes	43.75	Yes			5,274.2	13,260.77
319	308	Casing Joints	5 1/2	20.00	P-110	Yes	42.93	Yes			5,231.3	13,303.70
320	309	Casing Joints	5 1/2	20.00	P-110	Yes	42.60	Yes			5,188.7	13,346.30
321	310	Casing Joints	5 1/2	20.00	P-110	Yes	43.76	Yes			5,144.9	13,390.06
322	311	Casing Joints	5 1/2	20.00	P-110	Yes	43.86	Yes			5,101.1	13,433.92
323	312	Casing Joints	5 1/2	20.00	P-110	Yes	43.91	Yes			5,057.2	13,477.83
324	313	Casing Joints	5 1/2	20.00	P-110	Yes	43.34	Yes			5,013.8	13,521.17
325	314	Casing Joints	5 1/2	20.00	P-110	Yes	44.20	Yes			4,969.6	13,565.37
326	315	Casing Joints	5 1/2	20.00	P-110	Yes	43.62	Yes			4,926.0	13,608.99
327	316	Casing Joints	5 1/2	20.00	P-110	Yes	40.75	Yes			4,885.3	13,649.74
328	317	Casing Joints	5 1/2	20.00	P-110	Yes	42.34	Yes			4,842.9	13,692.08
329	318	Casing Joints	5 1/2	20.00	P-110	Yes	41.95	Yes			4,801.0	13,734.03
330	319	Casing Joints	5 1/2	20.00	P-110	Yes	43.95	Yes			4,757.0	13,777.98
331	320	Casing Joints	5 1/2	20.00	P-110	Yes	36.70	Yes			4,720.3	13,814.68
332	321	Casing Joints	5 1/2	20.00	P-110	Yes	43.87	Yes			4,676.5	13,858.55
333	322	Casing Joints	5 1/2	20.00	P-110	Yes	44.54	Yes			4,631.9	13,903.09
334	323	Casing Joints	5 1/2	20.00	P-110	Yes	42.85	Yes			4,589.1	13,945.94
335	324	Casing Joints	5 1/2	20.00	P-110	Yes	43.27	Yes			4,545.8	13,989.21
336	325	Casing Joints	5 1/2	20.00	P-110	Yes	41.24	Yes			4,504.6	14,030.45
337	326	Casing Joints	5 1/2	20.00	P-110	Yes	43.88	Yes			4,460.7	14,074.33
338	327	Casing Joints	5 1/2	20.00	P-110	Yes	42.90	Yes			4,417.8	14,117.23
339	328	Casing Joints	5 1/2	20.00	P-110	Yes	43.01	Yes			4,374.8	14,160.24
340	329	Casing Joints	5 1/2	20.00	P-110	Yes	45.03	Yes			4,329.7	14,205.27
341	330	Casing Joints	5 1/2	20.00	P-110	Yes	44.46	Yes			4,285.3	14,249.73
342	331	Casing Joints	5 1/2	20.00	P-110	Yes	44.52	Yes			4,240.8	14,294.25
343	332	Casing Joints	5 1/2	20.00	P-110	Yes	43.93	Yes			4,196.8	14,338.18
344	333	Casing Joints	5 1/2	20.00	P-110	Yes	43.66	Yes			4,153.2	14,381.84
345	334	Casing Joints	5 1/2	20.00	P-110	Yes	43.06	Yes			4,110.1	14,424.90
346	335	Casing Joints	5 1/2	20.00	P-110	Yes	43.91	Yes			4,066.2	14,468.81
347	336	Casing Joints	5 1/2	20.00	P-110	Yes	42.81	Yes			4,023.4	14,511.62
348	337	Casing Joints	5 1/2	20.00	P-110	Yes	35.83	Yes			3,987.6	14,547.45



Centralizer Depths

Well Name: Drake 04NA

Production, Set Depth: 18,535.0ftKB

API 05123518330000		Surface Legal Location SWNW 17 4N 64W		Field Name Wattenberg		State CO		Well Configuration Type Horizontal			
Ground Elevation (ft) 4,737.00	Original KB Elevation (ft) 4,765.50	KB-Ground Distance (ft) 28.50	Spud Date 11/17/2023 02:30	Rig Release Date 11/21/2023 02:30	On Production Date	Abandon Date					

Casing Run Tally												
Run #	Ref #	Item Des	OD (in)	Wt (lb/ft)	Grade	Run?	Len (ft)	Centralized?	Ext Jwry	Connections	Top (ftKB)	Cum Len (ft)
349	338	Casing Joints	5 1/2	20.00	P-110	Yes	44.55	Yes			3,943.0	14,592.00
350	339	Casing Joints	5 1/2	20.00	P-110	Yes	45.41	Yes			3,897.6	14,637.41
351	340	Casing Joints	5 1/2	20.00	P-110	Yes	43.97	Yes			3,853.6	14,681.38
352	341	Casing Joints	5 1/2	20.00	P-110	Yes	43.86	Yes			3,809.8	14,725.24
353	342	Casing Joints	5 1/2	20.00	P-110	Yes	38.30	Yes			3,771.5	14,763.54
354	343	Casing Joints	5 1/2	20.00	P-110	Yes	45.15	Yes			3,726.3	14,808.69
355	344	Casing Joints	5 1/2	20.00	P-110	Yes	44.53	Yes			3,681.8	14,853.22
356	345	Casing Joints	5 1/2	20.00	P-110	Yes	43.96	Yes			3,637.8	14,897.18
357	346	Casing Joints	5 1/2	20.00	P-110	Yes	42.12	Yes			3,595.7	14,939.30
358	347	Casing Joints	5 1/2	20.00	P-110	Yes	44.37	Yes			3,551.3	14,983.67
359	348	Casing Joints	5 1/2	20.00	P-110	Yes	44.65	Yes			3,506.7	15,028.32
360	349	Casing Joints	5 1/2	20.00	P-110	Yes	39.12	Yes			3,467.6	15,067.44
361	350	Casing Joints	5 1/2	20.00	P-110	Yes	44.18	Yes			3,423.4	15,111.62
363	351	Casing Joints	5 1/2	20.00	P-110	Yes	45.07	Yes			3,363.2	15,171.84
364	352	Casing Joints	5 1/2	20.00	P-110	Yes	43.16	Yes			3,320.0	15,215.00
365	353	Casing Joints	5 1/2	20.00	P-110	Yes	42.56	Yes			3,277.4	15,257.56
366	354	Casing Joints	5 1/2	20.00	P-110	Yes	44.66	Yes			3,232.8	15,302.22
367	355	Casing Joints	5 1/2	20.00	P-110	Yes	44.55	Yes			3,188.2	15,346.77
368	356	Casing Joints	5 1/2	20.00	P-110	Yes	44.55	Yes			3,143.7	15,391.32
369	357	Casing Joints	5 1/2	20.00	P-110	Yes	43.32	Yes			3,100.4	15,434.64
370	358	Casing Joints	5 1/2	20.00	P-110	Yes	44.20	Yes			3,056.2	15,478.84
371	359	Casing Joints	5 1/2	20.00	P-110	Yes	43.85	Yes			3,012.3	15,522.69
372	360	Casing Joints	5 1/2	20.00	P-110	Yes	42.80	Yes			2,969.5	15,565.49
373	361	Casing Joints	5 1/2	20.00	P-110	Yes	44.00	Yes			2,925.5	15,609.49
374	362	Casing Joints	5 1/2	20.00	P-110	Yes	44.56	Yes			2,881.0	15,654.05
375	363	Casing Joints	5 1/2	20.00	P-110	Yes	42.71	Yes			2,838.2	15,696.76
376	364	Casing Joints	5 1/2	20.00	P-110	Yes	44.24	Yes			2,794.0	15,741.00
377	365	Casing Joints	5 1/2	20.00	P-110	Yes	43.61	Yes			2,750.4	15,784.61
378	366	Casing Joints	5 1/2	20.00	P-110	Yes	42.87	Yes			2,707.5	15,827.48
379	367	Casing Joints	5 1/2	20.00	P-110	Yes	45.25	Yes			2,662.3	15,872.73
380	368	Casing Joints	5 1/2	20.00	P-110	Yes	44.72	Yes			2,617.6	15,917.45



Centralizer Depths

Well Name: Drake 04NA

Production, Set Depth: 18,535.0ftKB

API 05123518330000		Surface Legal Location SWNW 17 4N 64W		Field Name Wattenberg		State CO		Well Configuration Type Horizontal			
Ground Elevation (ft) 4,737.00	Original KB Elevation (ft) 4,765.50	KB-Ground Distance (ft) 28.50	Spud Date 11/17/2023 02:30	Rig Release Date 11/21/2023 02:30	On Production Date	Abandon Date					

Casing Run Tally

Run #	Ref #	Item Des	OD (in)	Wt (lb/ft)	Grade	Run?	Len (ft)	Centralized?	Ext Jwry	Connections	Top (ftKB)	Cum Len (ft)
381	369	Casing Joints	5 1/2	20.00	P-110	Yes	45.00	Yes			2,572.6	15,962.45
382	370	Casing Joints	5 1/2	20.00	P-110	Yes	44.57	Yes			2,528.0	16,007.02
383	371	Casing Joints	5 1/2	20.00	P-110	Yes	44.56	Yes			2,483.4	16,051.58
384	372	Casing Joints	5 1/2	20.00	P-110	Yes	44.52	Yes			2,438.9	16,096.10
385	373	Casing Joints	5 1/2	20.00	P-110	Yes	43.81	Yes			2,395.1	16,139.91
386	374	Casing Joints	5 1/2	20.00	P-110	Yes	40.39	Yes			2,354.7	16,180.30
387	375	Casing Joints	5 1/2	20.00	P-110	Yes	44.53	Yes			2,310.2	16,224.83
388	376	Casing Joints	5 1/2	20.00	P-110	Yes	44.56	Yes			2,265.6	16,269.39
389	377	Casing Joints	5 1/2	20.00	P-110	Yes	44.95	Yes			2,220.7	16,314.34
390	378	Casing Joints	5 1/2	20.00	P-110	Yes	43.96	Yes			2,176.7	16,358.30
391	379	Casing Joints	5 1/2	20.00	P-110	Yes	43.04	Yes			2,133.7	16,401.34
392	380	Casing Joints	5 1/2	20.00	P-110	Yes	44.90	Yes			2,088.8	16,446.24
393	381	Casing Joints	5 1/2	20.00	P-110	Yes	43.28	Yes			2,045.5	16,489.52
394	382	Casing Joints	5 1/2	20.00	P-110	Yes	41.45	Yes			2,004.0	16,530.97
395	383	Casing Joints	5 1/2	20.00	P-110	Yes	41.46	Yes			1,962.6	16,572.43
396	384	Casing Joints	5 1/2	20.00	P-110	Yes	43.60	Yes			1,919.0	16,616.03
397	385	Casing Joints	5 1/2	20.00	P-110	Yes	42.85	Yes			1,876.1	16,658.88
398	386	Casing Joints	5 1/2	20.00	P-110	Yes	44.20	Yes			1,831.9	16,703.08
399	387	Casing Joints	5 1/2	20.00	P-110	Yes	42.26	Yes			1,789.7	16,745.34
400	388	Casing Joints	5 1/2	20.00	P-110	Yes	40.38	Yes			1,749.3	16,785.72
401	389	Casing Joints	5 1/2	20.00	P-110	Yes	41.40	Yes			1,707.9	16,827.12
402	390	Casing Joints	5 1/2	20.00	P-110	Yes	43.16	Yes			1,664.7	16,870.28
403	391	Casing Joints	5 1/2	20.00	P-110	Yes	42.97	Yes			1,621.8	16,913.25
404	392	Casing Joints	5 1/2	20.00	P-110	Yes	38.34	Yes			1,583.4	16,951.59
405	393	Casing Joints	5 1/2	20.00	P-110	Yes	44.21	Yes			1,539.2	16,995.80
406	394	Casing Joints	5 1/2	20.00	P-110	Yes	44.65	Yes			1,494.6	17,040.45
407	395	Casing Joints	5 1/2	20.00	P-110	Yes	41.97	Yes			1,452.6	17,082.42
408	396	Casing Joints	5 1/2	20.00	P-110	Yes	44.96	Yes			1,407.6	17,127.38
409	397	Casing Joints	5 1/2	20.00	P-110	Yes	44.45	Yes			1,363.2	17,171.83
410	398	Casing Joints	5 1/2	20.00	P-110	Yes	44.00	Yes			1,319.2	17,215.83
411	399	Casing Joints	5 1/2	20.00	P-110	Yes	42.84	Yes			1,276.3	17,258.67



Centralizer Depths

Well Name: Drake 04NA

Production, Set Depth: 18,535.0ftKB

API 05123518330000		Surface Legal Location SWNW 17 4N 64W		Field Name Wattenberg		State CO		Well Configuration Type Horizontal	
Ground Elevation (ft) 4,737.00	Original KB Elevation (ft) 4,765.50	KB-Ground Distance (ft) 28.50	Spud Date 11/17/2023 02:30	Rig Release Date 11/21/2023 02:30	On Production Date	Abandon Date			

Casing Run Tally

Run #	Ref #	Item Des	OD (in)	Wt (lb/ft)	Grade	Run?	Len (ft)	Centralized?	Ext Jwry	Connections	Top (ftKB)	Cum Len (ft)
412	400	Casing Joints	5 1/2	20.00	P-110	Yes	39.89	Yes			1,236.4	17,298.56
413	401	Casing Joints	5 1/2	20.00	P-110	Yes	40.97	Yes			1,195.5	17,339.53
414	402	Casing Joints	5 1/2	20.00	P-110	Yes	41.30	Yes			1,154.2	17,380.83
415	403	Casing Joints	5 1/2	20.00	P-110	Yes	42.13	Yes			1,112.0	17,422.96
416	404	Casing Joints	5 1/2	20.00	P-110	Yes	38.37	Yes			1,073.7	17,461.33
417	405	Casing Joints	5 1/2	20.00	P-110	Yes	44.35	Yes			1,029.3	17,505.68
418	406	Casing Joints	5 1/2	20.00	P-110	Yes	42.85	Yes			986.5	17,548.53
419	407	Casing Joints	5 1/2	20.00	P-110	Yes	40.96	Yes			945.5	17,589.49
420	408	Casing Joints	5 1/2	20.00	P-110	Yes	40.80	Yes			904.7	17,630.29
421	409	Casing Joints	5 1/2	20.00	P-110	Yes	43.46	Yes			861.3	17,673.75
422	410	Casing Joints	5 1/2	20.00	P-110	Yes	43.14	Yes			818.1	17,716.89
423	411	Casing Joints	5 1/2	20.00	P-110	Yes	42.81	Yes			775.3	17,759.70
424	412	Casing Joints	5 1/2	20.00	P-110	Yes	40.13	Yes			735.2	17,799.83
425	413	Casing Joints	5 1/2	20.00	P-110	Yes	41.39	Yes			693.8	17,841.22
426	414	Casing Joints	5 1/2	20.00	P-110	Yes	40.86	Yes			652.9	17,882.08
427	415	Casing Joints	5 1/2	20.00	P-110	Yes	41.55	Yes			611.4	17,923.63
428	416	Casing Joints	5 1/2	20.00	P-110	Yes	38.81	Yes			572.6	17,962.44
429	417	Casing Joints	5 1/2	20.00	P-110	Yes	44.62	Yes			527.9	18,007.06
430	418	Casing Joints	5 1/2	20.00	P-110	Yes	41.42	Yes			486.5	18,048.48