

Chevron DJ Basin

DRAKE 05N

Drake Pad

North American Datum 1983 , US State Plane 1983, Colorado Northern Zone

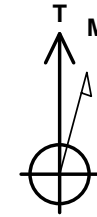
Ground Elevation: 4737.0

+N/-S	+E/-W	Northing	Easting	Latitude	Longitude
0.0	0.0	1358498.29	3256485.90	40.313827	-104.580232

P272 - RKB 28.5' Well @ 4765.5ft (P272 - RKB 28.5')



Drake Pad
DRAKE 05N
DRAKE 05N Final Surveys
15:57, March 21 2024



Azimuths to True North
Magnetic North: 7.67°

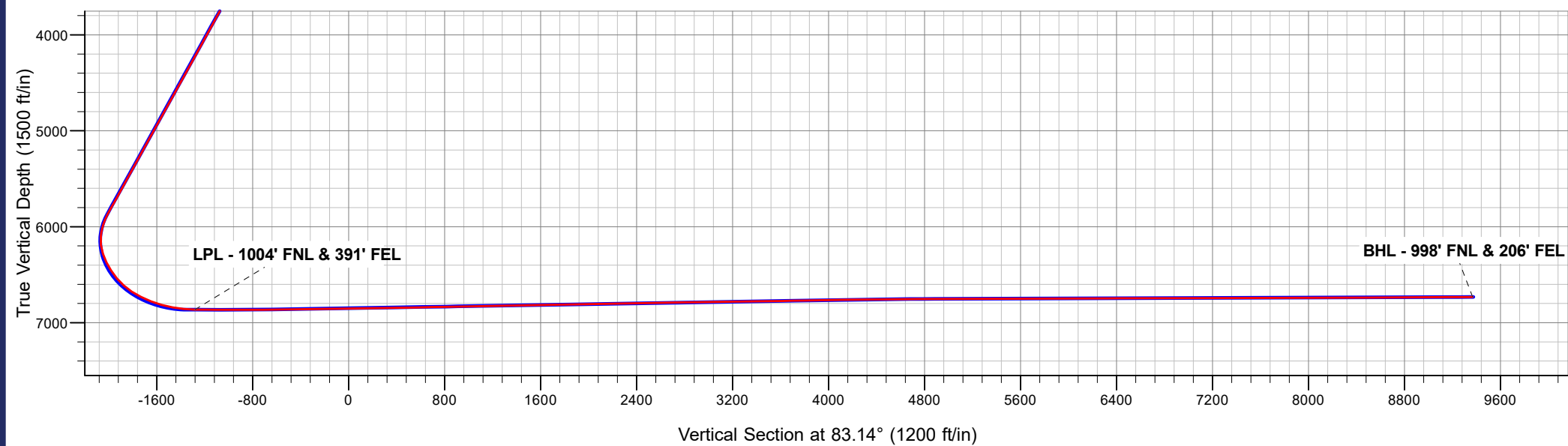
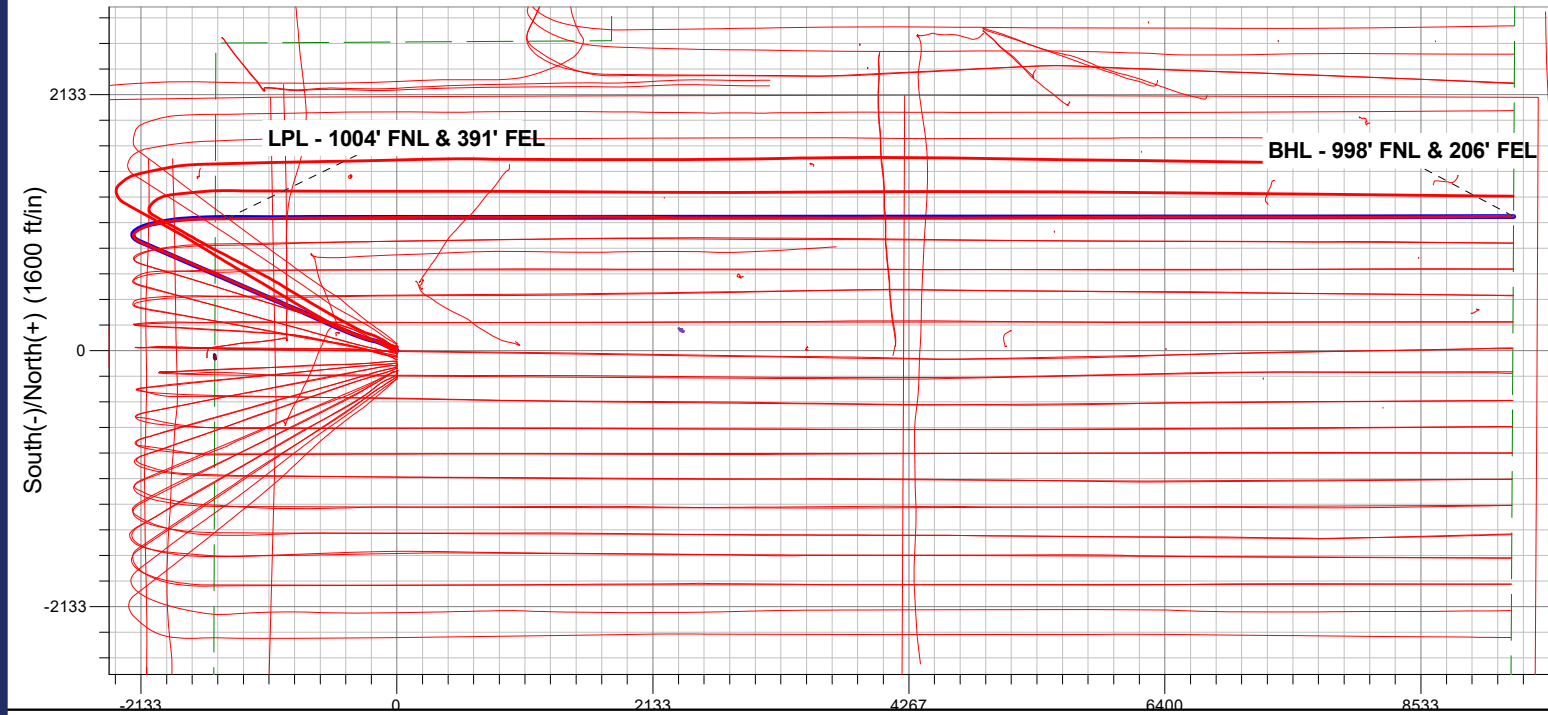
Magnetic Field
Strength: 51680.3nT
Dip Angle: 66.55°
Date: 11/15/2023
Model: HRGM

ANNOTATIONS

MD	TVD	Annotation
7872.0	6864.1	LPL - 1004' FNL & 391' FEL
18598.0	6732.5	BHL - 998' FNL & 206' FEL

FINAL SURVEY

Projected Bottom Hole Location
18598.0' MD / 6732.5' TVD
90.31° INC / 89.60° AZM
998' FNL / 206' FEL



Chevron DJ Basin

SEC.17-T4N-R64W

Drake Pad

DRAKE 05N

DRAKE 05N

Design: DRAKE 05N Final Surveys

Survey Report - Geographic

21 March, 2024

Ensign

Survey Report - Geographic

Company: Chevron DJ Basin	Local Co-ordinate Reference: Well DRAKE 05N
Project: SEC.17-T4N-R64W	TVD Reference: Well @ 4765.5ft (P272 - RKB 28.5')
Site: Drake Pad	MD Reference: Well @ 4765.5ft (P272 - RKB 28.5')
Well: DRAKE 05N	North Reference: True
Wellbore: DRAKE 05N	Survey Calculation Method: Minimum Curvature
Design: DRAKE 05N Final Surveys	Database: US_EDM

Project SEC.17-T4N-R64W, Weld County, Colorado	
Map System: US State Plane 1983	System Datum: Mean Sea Level
Geo Datum: North American Datum 1983	
Map Zone: Colorado Northern Zone	Using geodetic scale factor

Site Drake Pad		
Site Position:	Northing: 1,358,393.41 usft	Latitude: 40.313539
From: Lat/Long	Easting: 3,256,487.58 usft	Longitude: -104.580230
Position Uncertainty: 0.0 ft	Slot Radius: 13-3/16 "	Grid Convergence: 0.59 °

Well DRAKE 05N		
Well Position +N/-S 0.0 ft	Northing: 1,358,498.29 usft	Latitude: 40.313827
+E/-W 0.0 ft	Easting: 3,256,485.90 usft	Longitude: -104.580232
Position Uncertainty 0.0 ft	Wellhead Elevation: ft	Ground Level: 4,737.0 ft

Wellbore DRAKE 05N					
Magnetics	Model Name	Sample Date	Declination (°)	Dip Angle (°)	Field Strength (nT)
	HRGM	11/15/2023	7.67	66.55	51,680.33044130

Design DRAKE 05N Final Surveys				
Audit Notes:				
Version: 1.0	Phase: ACTUAL	Tie On Depth: 0.0		
Vertical Section:	Depth From (TVD) (ft)	+N/-S (ft)	+E/-W (ft)	Direction (°)
	0.0	0.0	0.0	83.14

Survey Program		Date 03/21/2024		
From (ft)	To (ft)	Survey (Wellbore)	Tool Name	Description
151.5	18,598.0	Survey #1 (DRAKE 05N)	MWD	MWD - Standard

Survey									
Measured Depth (ft)	Inclination (°)	Azimuth (°)	Vertical Depth (ft)	+N/-S (ft)	+E/-W (ft)	Map Northing (usft)	Map Easting (usft)	Latitude	Longitude
0.0	0.00	0.00	0.0	0.0	0.0	1,358,498.29	3,256,485.90	40.313827	-104.580232
151.5	0.44	21.41	151.5	0.5	0.2	1,358,498.83	3,256,486.11	40.313829	-104.580232
242.5	1.06	29.50	242.5	1.6	0.8	1,358,499.90	3,256,486.64	40.313831	-104.580230
334.5	0.35	108.77	334.5	2.2	1.4	1,358,500.56	3,256,487.32	40.313833	-104.580227
451.5	0.18	280.69	451.5	2.2	1.6	1,358,500.48	3,256,487.48	40.313833	-104.580227
538.5	0.26	172.58	538.5	2.0	1.5	1,358,500.30	3,256,487.37	40.313833	-104.580227
625.5	0.79	280.16	625.5	1.9	0.9	1,358,500.21	3,256,486.81	40.313832	-104.580229
712.5	2.90	288.07	712.4	2.7	-1.8	1,358,500.97	3,256,484.11	40.313834	-104.580239
799.5	5.10	292.29	799.2	4.8	-7.4	1,358,503.06	3,256,478.42	40.313840	-104.580259
886.5	6.24	297.91	885.8	8.5	-15.2	1,358,506.66	3,256,470.63	40.313850	-104.580287
971.5	6.24	299.15	970.3	12.9	-23.3	1,358,510.99	3,256,462.47	40.313863	-104.580316
1,059.5	8.18	294.22	1,057.6	17.8	-33.2	1,358,515.78	3,256,452.53	40.313876	-104.580351

Ensign

Survey Report - Geographic

Company:	Chevron DJ Basin	Local Co-ordinate Reference:	Well DRAKE 05N
Project:	SEC.17-T4N-R64W	TVD Reference:	Well @ 4765.5ft (P272 - RKB 28.5')
Site:	Drake Pad	MD Reference:	Well @ 4765.5ft (P272 - RKB 28.5')
Well:	DRAKE 05N	North Reference:	True
Wellbore:	DRAKE 05N	Survey Calculation Method:	Minimum Curvature
Design:	DRAKE 05N Final Surveys	Database:	US_EDM

Survey										
Measured Depth (ft)	Inclination (°)	Azimuth (°)	Vertical Depth (ft)	+N/-S (ft)	+E/-W (ft)	Map Northing (usft)	Map Easting (usft)	Latitude	Longitude	
1,146.5	10.82	291.41	1,143.4	23.4	-46.4	1,358,521.17	3,256,439.22	40.313891	-104.580399	
1,235.5	13.10	294.93	1,230.4	30.7	-63.4	1,358,528.29	3,256,422.22	40.313911	-104.580460	
1,322.5	14.86	295.81	1,314.9	39.7	-82.4	1,358,537.11	3,256,403.15	40.313936	-104.580528	
1,407.5	16.18	294.93	1,396.8	49.4	-102.9	1,358,546.63	3,256,382.50	40.313963	-104.580601	
1,494.5	17.41	295.45	1,480.1	60.1	-125.6	1,358,557.10	3,256,359.64	40.313992	-104.580683	
1,583.5	18.47	290.71	1,564.7	70.8	-150.9	1,358,567.54	3,256,334.32	40.314021	-104.580773	
1,668.5	20.75	284.38	1,644.8	79.3	-178.0	1,358,575.76	3,256,307.05	40.314045	-104.580871	
1,685.5	21.46	284.56	1,660.7	80.9	-184.0	1,358,577.23	3,256,301.11	40.314049	-104.580892	
1,808.0	21.88	283.29	1,774.5	91.7	-227.9	1,358,587.65	3,256,257.09	40.314079	-104.581049	
1,902.0	24.00	284.73	1,861.1	100.6	-263.4	1,358,596.17	3,256,221.47	40.314103	-104.581177	
1,997.0	25.00	289.99	1,947.5	112.4	-301.0	1,358,607.56	3,256,183.79	40.314136	-104.581312	
2,092.0	27.23	292.28	2,032.8	127.5	-340.0	1,358,622.26	3,256,144.66	40.314177	-104.581451	
2,187.0	27.23	291.52	2,117.3	143.7	-380.3	1,358,638.05	3,256,104.16	40.314222	-104.581596	
2,282.0	27.12	294.00	2,201.8	160.5	-420.3	1,358,654.42	3,256,063.99	40.314268	-104.581739	
2,376.0	27.37	293.99	2,285.4	178.0	-459.6	1,358,671.51	3,256,024.50	40.314316	-104.581880	
2,471.0	27.10	293.17	2,369.8	195.4	-499.4	1,358,688.48	3,255,984.48	40.314363	-104.582023	
2,566.0	27.23	292.85	2,454.4	212.3	-539.4	1,358,705.02	3,255,944.39	40.314410	-104.582166	
2,661.0	26.61	294.05	2,539.1	229.5	-578.8	1,358,721.72	3,255,904.75	40.314457	-104.582308	
2,755.0	27.14	295.52	2,622.9	247.3	-617.4	1,358,739.14	3,255,866.00	40.314506	-104.582446	
2,850.0	26.87	293.69	2,707.6	265.2	-656.6	1,358,756.69	3,255,826.60	40.314555	-104.582587	
2,944.0	26.90	292.32	2,791.4	281.8	-695.7	1,358,772.89	3,255,787.31	40.314601	-104.582727	
3,038.0	26.65	293.83	2,875.3	298.4	-734.7	1,358,789.08	3,255,748.19	40.314646	-104.582867	
3,133.0	26.80	294.07	2,960.2	315.8	-773.7	1,358,806.02	3,255,708.97	40.314694	-104.583007	
3,227.0	27.24	293.96	3,043.9	333.2	-812.7	1,358,822.99	3,255,669.78	40.314741	-104.583147	
3,322.0	26.78	293.90	3,128.6	350.7	-852.2	1,358,840.08	3,255,630.17	40.314790	-104.583288	
3,417.0	25.83	290.96	3,213.7	366.7	-891.1	1,358,855.75	3,255,591.11	40.314834	-104.583428	
3,512.0	27.08	293.58	3,298.8	382.8	-930.2	1,358,871.39	3,255,551.80	40.314878	-104.583568	
3,607.0	25.99	294.15	3,383.8	400.0	-969.0	1,358,888.16	3,255,512.81	40.314925	-104.583707	
3,701.0	26.10	291.28	3,468.2	415.9	-1,007.1	1,358,903.69	3,255,474.59	40.314969	-104.583844	
3,796.0	26.78	293.48	3,553.3	432.0	-1,046.2	1,358,919.40	3,255,435.32	40.315013	-104.583984	
3,891.0	26.98	294.12	3,638.0	449.3	-1,085.5	1,358,936.32	3,255,395.85	40.315060	-104.584125	
3,985.0	27.30	294.08	3,721.7	466.8	-1,124.6	1,358,953.42	3,255,356.53	40.315108	-104.584265	
4,080.0	26.70	293.46	3,806.3	484.2	-1,164.1	1,358,970.40	3,255,316.88	40.315156	-104.584407	
4,174.0	27.08	294.70	3,890.2	501.6	-1,202.9	1,358,987.34	3,255,277.90	40.315204	-104.584546	
4,269.0	26.76	294.04	3,974.9	519.3	-1,242.1	1,359,004.68	3,255,238.54	40.315252	-104.584686	
4,363.0	26.76	293.65	4,058.8	536.4	-1,280.8	1,359,021.39	3,255,199.65	40.315299	-104.584825	
4,458.0	27.14	294.40	4,143.5	554.0	-1,320.1	1,359,038.51	3,255,160.15	40.315348	-104.584966	
4,553.0	27.43	294.08	4,227.9	571.8	-1,359.8	1,359,055.97	3,255,120.26	40.315397	-104.585109	
4,648.0	27.78	293.56	4,312.1	589.6	-1,400.1	1,359,073.33	3,255,079.81	40.315445	-104.585253	
4,743.0	27.36	293.23	4,396.3	607.1	-1,440.5	1,359,090.37	3,255,039.28	40.315493	-104.585398	
4,838.0	27.44	293.46	4,480.7	624.4	-1,480.6	1,359,107.28	3,254,998.96	40.315541	-104.585542	
4,933.0	27.20	293.11	4,565.1	641.6	-1,520.7	1,359,124.10	3,254,958.74	40.315588	-104.585685	
5,028.0	26.98	293.60	4,649.6	658.8	-1,560.4	1,359,140.83	3,254,918.85	40.315635	-104.585828	
5,123.0	27.03	293.69	4,734.3	676.1	-1,599.9	1,359,157.72	3,254,879.16	40.315683	-104.585969	
5,217.0	27.42	293.68	4,817.9	693.4	-1,639.3	1,359,174.59	3,254,839.60	40.315730	-104.586111	
5,312.0	26.78	293.88	4,902.4	710.8	-1,678.9	1,359,191.62	3,254,799.82	40.315778	-104.586253	
5,407.0	27.08	293.08	4,987.1	728.0	-1,718.3	1,359,208.35	3,254,760.18	40.315825	-104.586394	
5,502.0	27.39	293.74	5,071.6	745.2	-1,758.2	1,359,225.21	3,254,720.11	40.315872	-104.586537	
5,597.0	27.20	293.25	5,156.0	762.6	-1,798.2	1,359,242.16	3,254,679.98	40.315920	-104.586681	
5,692.0	26.38	292.26	5,240.8	779.2	-1,837.7	1,359,258.32	3,254,640.33	40.315966	-104.586822	
5,786.0	26.85	291.58	5,324.9	794.9	-1,876.7	1,359,273.63	3,254,601.11	40.316009	-104.586962	
5,880.0	26.67	292.72	5,408.8	810.8	-1,915.9	1,359,289.18	3,254,561.75	40.316053	-104.587103	
5,975.0	26.77	292.23	5,493.7	827.2	-1,955.4	1,359,305.10	3,254,522.11	40.316097	-104.587244	
6,070.0	27.38	293.43	5,578.2	843.9	-1,995.3	1,359,321.46	3,254,482.09	40.316143	-104.587387	
6,165.0	27.03	292.67	5,662.7	861.0	-2,035.2	1,359,338.05	3,254,441.96	40.316190	-104.587531	

Ensign

Survey Report - Geographic

Company:	Chevron DJ Basin	Local Co-ordinate Reference:	Well DRAKE 05N
Project:	SEC.17-T4N-R64W	TVD Reference:	Well @ 4765.5ft (P272 - RKB 28.5')
Site:	Drake Pad	MD Reference:	Well @ 4765.5ft (P272 - RKB 28.5')
Well:	DRAKE 05N	North Reference:	True
Wellbore:	DRAKE 05N	Survey Calculation Method:	Minimum Curvature
Design:	DRAKE 05N Final Surveys	Database:	US_EDM

Survey										
Measured Depth (ft)	Inclination (°)	Azimuth (°)	Vertical Depth (ft)	+N/-S (ft)	+E/-W (ft)	Map Northing (usft)	Map Easting (usft)	Latitude	Longitude	
6,259.0	27.36	293.51	5,746.3	877.8	-2,074.7	1,359,354.49	3,254,402.27	40.316236	-104.587672	
6,354.0	27.28	292.80	5,830.7	894.9	-2,114.8	1,359,371.22	3,254,362.01	40.316283	-104.587816	
6,449.0	23.64	298.78	5,916.5	912.6	-2,151.6	1,359,388.45	3,254,325.05	40.316332	-104.587948	
6,544.0	17.73	312.97	6,005.4	931.6	-2,178.9	1,359,407.22	3,254,297.53	40.316384	-104.588046	
6,639.0	13.22	333.16	6,097.0	951.2	-2,194.4	1,359,426.64	3,254,281.82	40.316438	-104.588101	
6,733.0	11.63	18.54	6,189.0	969.8	-2,196.3	1,359,445.23	3,254,279.78	40.316489	-104.588108	
6,828.0	16.74	53.70	6,281.3	987.0	-2,182.2	1,359,462.60	3,254,293.71	40.316536	-104.588058	
6,923.0	22.76	59.71	6,370.6	1,004.4	-2,155.2	1,359,480.26	3,254,320.45	40.316584	-104.587961	
7,017.0	29.48	62.85	6,455.0	1,024.2	-2,118.9	1,359,500.38	3,254,356.56	40.316638	-104.587831	
7,113.0	33.61	71.78	6,536.8	1,043.3	-2,072.6	1,359,519.97	3,254,402.66	40.316691	-104.587665	
7,208.0	41.65	78.53	6,612.0	1,057.8	-2,016.6	1,359,535.08	3,254,458.54	40.316730	-104.587464	
7,302.0	51.55	80.28	6,676.5	1,070.3	-1,949.5	1,359,548.23	3,254,525.46	40.316765	-104.587223	
7,397.0	56.79	82.98	6,732.1	1,081.4	-1,873.4	1,359,560.16	3,254,601.51	40.316795	-104.586950	
7,492.0	65.29	86.09	6,778.1	1,089.2	-1,790.7	1,359,568.84	3,254,684.08	40.316817	-104.586654	
7,587.0	70.18	87.31	6,814.1	1,094.3	-1,703.0	1,359,574.79	3,254,771.76	40.316831	-104.586339	
7,682.0	78.37	89.04	6,839.8	1,097.1	-1,611.6	1,359,578.62	3,254,863.04	40.316838	-104.586012	
7,777.0	80.87	89.16	6,856.9	1,098.6	-1,518.2	1,359,581.05	3,254,956.44	40.316843	-104.585677	
7,872.0	90.43	90.13	6,864.1	1,099.2	-1,423.6	1,359,582.62	3,255,051.04	40.316844	-104.585337	
LPL - 1004' FNL & 391' FEL										
7,967.0	89.46	89.65	6,864.2	1,099.4	-1,328.6	1,359,583.78	3,255,146.03	40.316845	-104.584997	
8,061.0	89.84	89.66	6,864.8	1,099.9	-1,234.6	1,359,585.32	3,255,240.01	40.316846	-104.584660	
8,156.0	89.80	89.34	6,865.1	1,100.8	-1,139.6	1,359,587.14	3,255,334.99	40.316849	-104.584319	
8,345.0	89.94	89.41	6,865.5	1,102.8	-950.6	1,359,591.16	3,255,523.94	40.316854	-104.583641	
8,440.0	89.73	89.58	6,865.8	1,103.7	-855.6	1,359,592.98	3,255,618.91	40.316857	-104.583301	
8,535.0	91.48	89.11	6,864.8	1,104.8	-760.6	1,359,595.05	3,255,713.88	40.316859	-104.582960	
8,630.0	91.21	89.52	6,862.6	1,105.9	-665.7	1,359,597.17	3,255,808.82	40.316863	-104.582619	
8,724.0	91.14	89.39	6,860.6	1,106.8	-571.7	1,359,599.04	3,255,902.78	40.316865	-104.582282	
8,914.0	91.23	89.56	6,856.7	1,108.5	-381.7	1,359,602.75	3,256,092.70	40.316870	-104.581601	
9,009.0	91.03	90.11	6,854.8	1,108.8	-286.8	1,359,604.01	3,256,187.66	40.316871	-104.581261	
9,103.0	91.08	89.78	6,853.1	1,108.9	-192.8	1,359,605.08	3,256,281.64	40.316871	-104.580924	
9,198.0	90.61	90.23	6,851.7	1,108.9	-97.8	1,359,606.05	3,256,376.62	40.316871	-104.580583	
9,293.0	91.48	89.67	6,850.0	1,109.0	-2.8	1,359,607.12	3,256,471.59	40.316871	-104.580242	
9,388.0	90.77	89.72	6,848.1	1,109.5	92.2	1,359,608.61	3,256,566.56	40.316872	-104.579902	
9,482.0	91.38	89.33	6,846.3	1,110.3	186.2	1,359,610.37	3,256,660.52	40.316875	-104.579565	
9,577.0	91.14	89.69	6,844.3	1,111.1	281.1	1,359,612.16	3,256,755.47	40.316877	-104.579224	
9,671.0	91.21	90.13	6,842.3	1,111.2	375.1	1,359,613.28	3,256,849.44	40.316877	-104.578887	
9,766.0	91.96	89.60	6,839.7	1,111.4	470.1	1,359,614.49	3,256,944.39	40.316878	-104.578547	
9,861.0	90.80	90.31	6,837.4	1,111.5	565.0	1,359,615.55	3,257,039.35	40.316878	-104.578206	
9,956.0	91.68	89.47	6,835.4	1,111.7	660.0	1,359,616.72	3,257,134.32	40.316879	-104.577866	
10,051.0	91.30	89.90	6,832.9	1,112.2	755.0	1,359,618.23	3,257,229.27	40.316880	-104.577525	
10,146.0	91.38	90.12	6,830.7	1,112.2	850.0	1,359,619.20	3,257,324.23	40.316880	-104.577184	
10,240.0	90.90	90.18	6,828.8	1,112.0	943.9	1,359,619.92	3,257,418.21	40.316879	-104.576847	
10,335.0	91.35	90.59	6,826.9	1,111.3	1,038.9	1,359,620.27	3,257,513.19	40.316877	-104.576507	
10,430.0	91.26	90.20	6,824.8	1,110.7	1,133.9	1,359,620.60	3,257,608.16	40.316876	-104.576166	
10,525.0	91.83	89.79	6,822.2	1,110.7	1,228.8	1,359,621.59	3,257,703.11	40.316876	-104.575826	
10,620.0	91.45	89.43	6,819.5	1,111.3	1,323.8	1,359,623.23	3,257,798.05	40.316877	-104.575485	
10,715.0	91.75	89.59	6,816.8	1,112.1	1,418.8	1,359,625.02	3,257,892.99	40.316880	-104.575145	
10,809.0	91.05	89.67	6,814.5	1,112.7	1,512.7	1,359,626.60	3,257,986.95	40.316881	-104.574808	
10,903.0	91.79	89.52	6,812.2	1,113.4	1,606.7	1,359,628.24	3,258,080.90	40.316883	-104.574471	
10,998.0	91.61	89.28	6,809.4	1,114.4	1,701.7	1,359,630.22	3,258,175.83	40.316886	-104.574130	
11,093.0	91.31	90.86	6,807.0	1,114.3	1,796.6	1,359,631.09	3,258,270.79	40.316885	-104.573790	
11,188.0	90.84	90.86	6,805.2	1,112.9	1,891.6	1,359,630.65	3,258,365.77	40.316882	-104.573449	
11,283.0	91.58	90.34	6,803.2	1,111.9	1,986.6	1,359,630.64	3,258,460.74	40.316879	-104.573109	
11,377.0	90.94	91.16	6,801.1	1,110.6	2,080.5	1,359,630.39	3,258,554.71	40.316875	-104.572772	
11,472.0	91.01	90.69	6,799.5	1,109.1	2,175.5	1,359,629.84	3,258,649.69	40.316871	-104.572431	

Ensign

Survey Report - Geographic

Company:	Chevron DJ Basin	Local Co-ordinate Reference:	Well DRAKE 05N
Project:	SEC.17-T4N-R64W	TVD Reference:	Well @ 4765.5ft (P272 - RKB 28.5')
Site:	Drake Pad	MD Reference:	Well @ 4765.5ft (P272 - RKB 28.5')
Well:	DRAKE 05N	North Reference:	True
Wellbore:	DRAKE 05N	Survey Calculation Method:	Minimum Curvature
Design:	DRAKE 05N Final Surveys	Database:	US_EDM

Survey										
Measured Depth (ft)	Inclination (°)	Azimuth (°)	Vertical Depth (ft)	+N/-S (ft)	+E/-W (ft)	Map Northing (usft)	Map Easting (usft)	Latitude	Longitude	
11,566.0	91.68	90.34	6,797.3	1,108.2	2,269.5	1,359,629.97	3,258,743.66	40.316869	-104.572094	
11,661.0	91.09	90.43	6,795.0	1,107.6	2,364.4	1,359,630.31	3,258,838.63	40.316867	-104.571754	
11,756.0	90.89	89.94	6,793.4	1,107.3	2,459.4	1,359,630.99	3,258,933.61	40.316866	-104.571413	
11,850.0	91.46	89.79	6,791.4	1,107.5	2,553.4	1,359,632.19	3,259,027.58	40.316867	-104.571076	
11,945.0	91.24	89.80	6,789.2	1,107.9	2,648.4	1,359,633.51	3,259,122.54	40.316868	-104.570735	
12,040.0	91.14	90.04	6,787.2	1,108.0	2,743.4	1,359,634.63	3,259,217.51	40.316868	-104.570395	
12,134.0	91.26	90.18	6,785.2	1,107.8	2,837.3	1,359,635.43	3,259,311.48	40.316867	-104.570058	
12,227.0	90.71	90.13	6,783.6	1,107.6	2,930.3	1,359,636.14	3,259,404.46	40.316867	-104.569724	
12,321.0	91.12	90.26	6,782.1	1,107.2	3,024.3	1,359,636.79	3,259,498.44	40.316866	-104.569387	
12,416.0	91.64	89.80	6,779.9	1,107.2	3,119.3	1,359,637.73	3,259,593.40	40.316866	-104.569047	
12,511.0	90.86	90.26	6,777.8	1,107.1	3,214.3	1,359,638.66	3,259,688.37	40.316865	-104.568706	
12,605.0	90.65	90.40	6,776.5	1,106.6	3,308.3	1,359,639.10	3,259,782.36	40.316864	-104.568369	
12,700.0	91.20	90.19	6,775.0	1,106.1	3,403.2	1,359,639.59	3,259,877.34	40.316863	-104.568028	
12,795.0	91.09	89.75	6,773.1	1,106.2	3,498.2	1,359,640.63	3,259,972.31	40.316863	-104.567688	
12,889.0	91.01	90.14	6,771.4	1,106.3	3,592.2	1,359,641.69	3,260,066.28	40.316863	-104.567351	
12,984.0	91.08	90.16	6,769.7	1,106.0	3,687.2	1,359,642.43	3,260,161.26	40.316862	-104.567010	
13,078.0	91.14	89.90	6,767.8	1,106.0	3,781.2	1,359,643.36	3,260,255.23	40.316862	-104.566673	
13,173.0	91.21	89.61	6,765.9	1,106.4	3,876.2	1,359,644.75	3,260,350.20	40.316863	-104.566333	
13,268.0	91.27	89.78	6,763.8	1,106.9	3,971.1	1,359,646.24	3,260,445.16	40.316864	-104.565992	
13,362.0	90.57	90.21	6,762.3	1,106.9	4,065.1	1,359,647.22	3,260,539.14	40.316864	-104.565655	
13,457.0	91.36	90.09	6,760.7	1,106.6	4,160.1	1,359,647.96	3,260,634.12	40.316864	-104.565314	
13,552.0	91.20	89.69	6,758.6	1,106.8	4,255.1	1,359,649.12	3,260,729.08	40.316864	-104.564974	
13,646.0	91.72	89.88	6,756.2	1,107.2	4,349.0	1,359,650.45	3,260,823.04	40.316865	-104.564637	
13,741.0	91.03	89.98	6,753.9	1,107.3	4,444.0	1,359,651.55	3,260,918.00	40.316865	-104.564296	
13,836.0	90.58	90.15	6,752.6	1,107.2	4,539.0	1,359,652.43	3,261,012.98	40.316865	-104.563956	
13,931.0	89.80	90.21	6,752.3	1,106.9	4,634.0	1,359,653.12	3,261,107.97	40.316864	-104.563615	
14,025.0	90.77	89.87	6,751.8	1,106.8	4,728.0	1,359,654.03	3,261,201.96	40.316864	-104.563278	
14,120.0	90.01	90.26	6,751.2	1,106.7	4,823.0	1,359,654.90	3,261,296.95	40.316864	-104.562937	
14,215.0	89.56	90.67	6,751.5	1,105.9	4,918.0	1,359,655.12	3,261,391.94	40.316861	-104.562597	
14,310.0	90.01	89.88	6,751.9	1,105.5	5,013.0	1,359,655.65	3,261,486.94	40.316860	-104.562256	
14,404.0	90.37	89.63	6,751.6	1,105.9	5,107.0	1,359,657.02	3,261,580.92	40.316861	-104.561919	
14,499.0	89.64	89.98	6,751.6	1,106.2	5,202.0	1,359,658.33	3,261,675.91	40.316862	-104.561578	
14,593.0	90.44	89.27	6,751.5	1,106.8	5,296.0	1,359,659.92	3,261,769.89	40.316864	-104.561241	
14,688.0	90.38	90.02	6,750.8	1,107.4	5,391.0	1,359,661.50	3,261,864.87	40.316865	-104.560900	
14,783.0	90.41	89.46	6,750.2	1,107.8	5,486.0	1,359,662.91	3,261,959.85	40.316866	-104.560560	
14,877.0	90.77	89.13	6,749.2	1,109.0	5,580.0	1,359,665.04	3,262,053.82	40.316869	-104.560223	
14,972.0	89.66	89.70	6,748.8	1,110.0	5,675.0	1,359,667.00	3,262,148.79	40.316872	-104.559882	
15,067.0	90.18	89.12	6,749.0	1,110.9	5,770.0	1,359,668.96	3,262,243.77	40.316875	-104.559541	
15,161.0	90.53	89.91	6,748.4	1,111.7	5,863.9	1,359,670.73	3,262,337.74	40.316877	-104.559204	
15,256.0	90.18	89.23	6,747.8	1,112.4	5,958.9	1,359,672.43	3,262,432.72	40.316879	-104.558864	
15,351.0	90.57	89.29	6,747.2	1,113.7	6,053.9	1,359,674.64	3,262,527.69	40.316882	-104.558523	
15,445.0	90.27	90.13	6,746.5	1,114.1	6,147.9	1,359,676.09	3,262,621.67	40.316883	-104.558186	
15,540.0	90.15	89.91	6,746.1	1,114.1	6,242.9	1,359,677.05	3,262,716.66	40.316883	-104.557845	
15,635.0	90.37	90.05	6,745.7	1,114.1	6,337.9	1,359,678.06	3,262,811.65	40.316883	-104.557505	
15,730.0	90.24	90.11	6,745.2	1,114.0	6,432.9	1,359,678.92	3,262,906.64	40.316883	-104.557164	
15,825.0	90.19	90.00	6,744.8	1,113.9	6,527.9	1,359,679.81	3,263,001.63	40.316882	-104.556823	
15,920.0	90.38	89.79	6,744.4	1,114.1	6,622.9	1,359,680.97	3,263,096.62	40.316883	-104.556483	
16,014.0	90.11	90.17	6,744.0	1,114.1	6,716.9	1,359,681.98	3,263,190.61	40.316883	-104.556146	
16,109.0	90.39	90.08	6,743.6	1,113.9	6,811.9	1,359,682.76	3,263,285.60	40.316882	-104.555805	
16,204.0	90.13	89.99	6,743.1	1,113.9	6,906.9	1,359,683.68	3,263,380.59	40.316882	-104.555464	
16,298.0	90.01	90.08	6,743.0	1,113.8	7,000.9	1,359,684.60	3,263,474.58	40.316882	-104.555127	
16,393.0	89.73	90.41	6,743.2	1,113.4	7,095.9	1,359,685.18	3,263,569.57	40.316880	-104.554787	
16,488.0	90.00	90.44	6,743.4	1,112.7	7,190.9	1,359,685.46	3,263,664.57	40.316878	-104.554446	
16,582.0	90.20	90.17	6,743.3	1,112.2	7,284.9	1,359,685.94	3,263,758.56	40.316877	-104.554109	
16,676.0	90.51	90.00	6,742.7	1,112.1	7,378.9	1,359,686.77	3,263,852.55	40.316877	-104.553772	

Ensign

Survey Report - Geographic

Company: Chevron DJ Basin	Local Co-ordinate Reference: Well DRAKE 05N
Project: SEC.17-T4N-R64W	TVD Reference: Well @ 4765.5ft (P272 - RKB 28.5')
Site: Drake Pad	MD Reference: Well @ 4765.5ft (P272 - RKB 28.5')
Well: DRAKE 05N	North Reference: True
Wellbore: DRAKE 05N	Survey Calculation Method: Minimum Curvature
Design: DRAKE 05N Final Surveys	Database: US_EDM

Survey									
Measured Depth (ft)	Inclination (°)	Azimuth (°)	Vertical Depth (ft)	+N/-S (ft)	+E/-W (ft)	Map Northing (usft)	Map Easting (usft)	Latitude	Longitude
16,771.0	90.06	90.01	6,742.2	1,112.0	7,473.9	1,359,687.75	3,263,947.54	40.316876	-104.553431
16,865.0	90.23	89.79	6,742.0	1,112.2	7,567.9	1,359,688.89	3,264,041.53	40.316877	-104.553094
16,960.0	90.17	89.84	6,741.7	1,112.5	7,662.9	1,359,690.18	3,264,136.52	40.316878	-104.552753
17,054.0	90.34	90.35	6,741.2	1,112.4	7,756.9	1,359,691.00	3,264,230.51	40.316877	-104.552416
17,149.0	89.86	90.52	6,741.1	1,111.6	7,851.9	1,359,691.26	3,264,325.50	40.316875	-104.552076
17,244.0	90.53	89.97	6,740.7	1,111.2	7,946.9	1,359,691.84	3,264,420.50	40.316874	-104.551735
17,339.0	90.34	90.61	6,740.0	1,110.8	8,041.9	1,359,692.35	3,264,515.49	40.316872	-104.551394
17,434.0	90.19	89.67	6,739.6	1,110.5	8,136.9	1,359,693.10	3,264,610.48	40.316872	-104.551054
17,529.0	90.39	89.65	6,739.1	1,111.1	8,231.9	1,359,694.65	3,264,705.46	40.316873	-104.550713
17,623.0	90.35	89.47	6,738.5	1,111.8	8,325.9	1,359,696.34	3,264,799.44	40.316875	-104.550376
17,719.0	90.27	89.60	6,738.0	1,112.6	8,421.9	1,359,698.12	3,264,895.42	40.316877	-104.550032
17,813.0	90.41	89.57	6,737.4	1,113.3	8,515.9	1,359,699.78	3,264,989.39	40.316879	-104.549695
17,908.0	90.31	89.64	6,736.8	1,113.9	8,610.9	1,359,701.42	3,265,084.37	40.316881	-104.549354
18,002.0	90.39	89.66	6,736.3	1,114.5	8,704.9	1,359,702.96	3,265,178.36	40.316882	-104.549017
18,097.0	90.34	89.76	6,735.6	1,115.0	8,799.9	1,359,704.43	3,265,273.34	40.316883	-104.548676
18,192.0	90.20	89.38	6,735.2	1,115.7	8,894.9	1,359,706.13	3,265,368.32	40.316885	-104.548336
18,287.0	90.44	89.52	6,734.7	1,116.6	8,989.9	1,359,708.03	3,265,463.29	40.316888	-104.547995
18,381.0	90.43	89.33	6,734.0	1,117.5	9,083.8	1,359,709.94	3,265,557.27	40.316890	-104.547658
18,475.0	90.43	89.63	6,733.2	1,118.4	9,177.8	1,359,711.77	3,265,651.24	40.316892	-104.547321
18,563.0	90.31	89.60	6,732.7	1,119.0	9,265.8	1,359,713.28	3,265,739.22	40.316894	-104.547005
18,598.0	90.31	89.60	6,732.5	1,119.2	9,300.8	1,359,713.88	3,265,774.22	40.316894	-104.546880
BHL - 998' FNL & 206' FEL									

Casing Points					
Measured Depth (ft)	Vertical Depth (ft)	Name	Casing Diameter (")	Hole Diameter (")	
50.0	50.0	13 3/8"	13-3/8	17-1/2	

Design Annotations				
Measured Depth (ft)	Vertical Depth (ft)	Local Coordinates		Comment
		+N/-S (ft)	+E/-W (ft)	
7,872.0	6,864.1	1,099.2	-1,423.6	LPL - 1004' FNL & 391' FEL
18,598.0	6,732.5	1,119.2	9,300.8	BHL - 998' FNL & 206' FEL

Checked By: _____ Approved By: _____ Date: _____