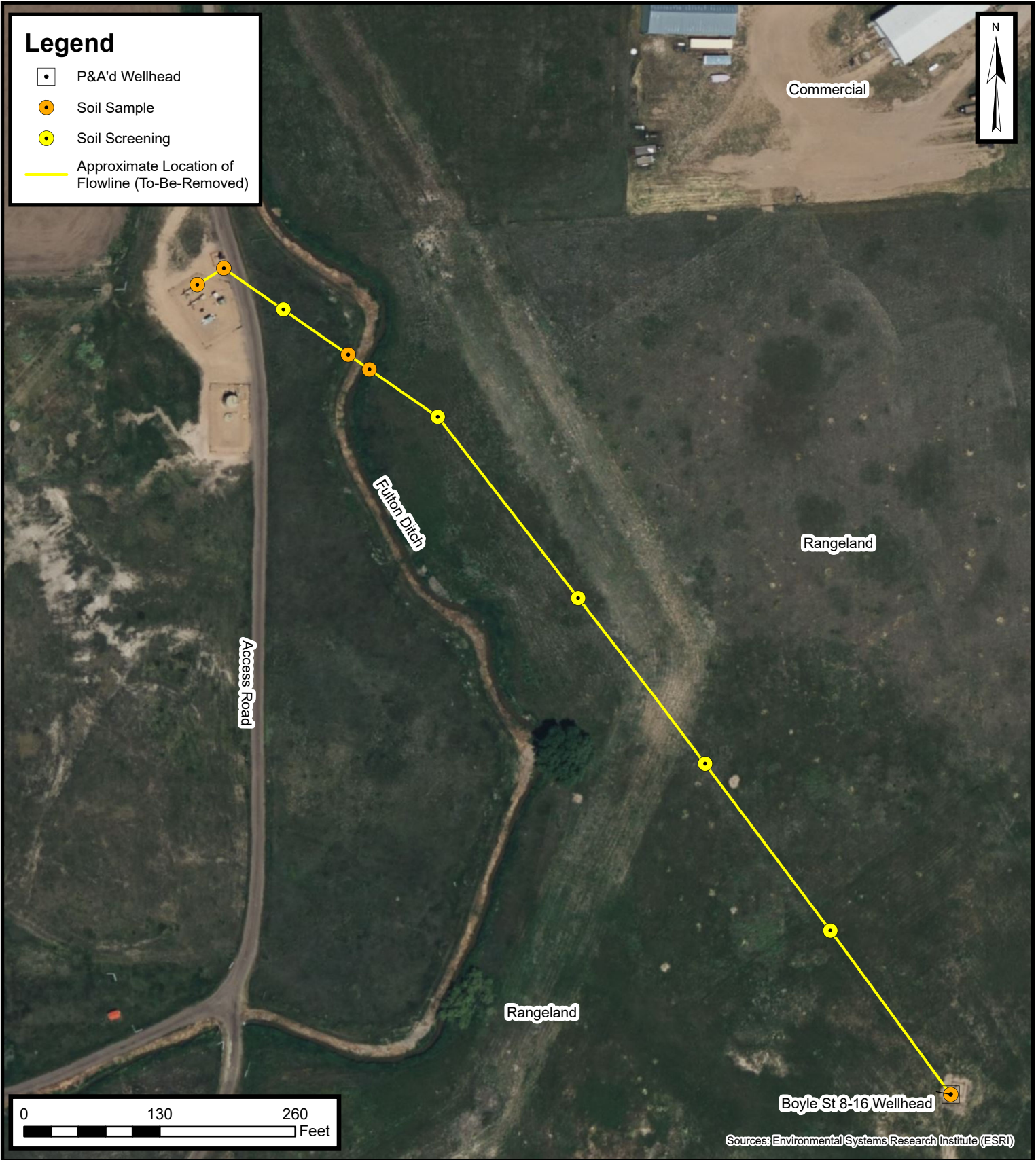


# Legend

- P&A'd Wellhead
- Soil Sample
- Soil Screening
- Approximate Location of Flowline (To-Be-Removed)



Default Folder: C:\Users\Maregan TallOne\OneDrive - ENSOLUM, LLC\Ensolium GIS\0 - Projects\Kerr-McGee Oil & Gas Onshore, LP\09A1417746 - Boyle St 8-16 Wellhead



## Proposed Flowline Excavation and Soil Sampling Locations Map

Boyle St 8-16 Flowline  
Kerr-McGee Oil & Gas Onshore, LP  
SENE SEC 16-T2N-R66W  
Weld County, CO

Project Number: 09A1417746

FIGURE

3