

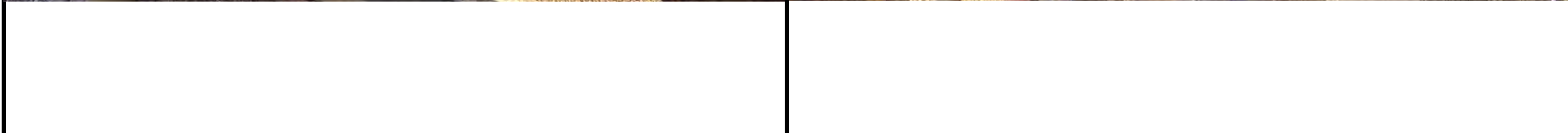


SITE NAME: GreenLeaf 16N-15HZ							DATE: 1/19/2024	REM. PROJECT #:	WEATHER: SUNNY 30		
SITE DIRECTIONS: 8.5 MILES PAST CR 41 ON CR22							CLIENT: Oxy				
LEGALS AND LAT/LONG: 40.145469,-104649567							TASMAN PERSONNEL: Kevins Magouirk				
SOIL TYPES: Well Graded Gravel - GW							SURFACE GRADIENT: North				
SOIL SAMPLING							FACILITY INFRASTRUCTURE				
Date/Time	Soil Sample ID	PID (ppm)	Visual	Olfactory	Photo?	Grab or Lab Sample?	EQUIPMENT		Quantity		
							Above Ground Storage Tank (AST)				
9/25/2023 11:33	B01@3"	171.1	HC Staining	HC Odor	Yes	Lab	Buried or Partially Buried Vessel				
9/25/2023 11:35	BG01@3"	1.4	No Staining	No Odor	Yes	Lab	Separator				
9/25/2023 11:37	BG02@3'	2.8	No Staining	No Odor	Yes	Lab	Emission Control Device (ECD)				
9/25/2023 11:39	BG03@3"	1.7	No Staining	No Odor	Yes	Lab	Dump Line				
9/25/2023 11:41	BG04@3"	0.8	No Staining	No Odor	Yes	Lab	Wellhead				
12/28/2023 10:45	B02@6'	11.0	No Staining	No Odor	Yes	Lab	Flowline				
12/28/2023 10:47	B03@6'	0.8	No Staining	No Odor	Yes	Lab	Other:				
12/28/2023 10:49	N01@4'	0.4	No Staining	No Odor	Yes	Lab	Soil Loads Removed				
12/28/2023 10:51	S01@4'	0.4	No Staining	No Odor	Yes	Lab	IMPACTED SOIL IDENTIFIED?				
12/28/2023 10:53	E01@4'	3.4	No Staining	No Odor	Yes	Lab	ESTIMATED VOLUME OF IMPACTS:				
12/28/2023 10:55	E02@4'	0.4	No Staining	No Odor	Yes	Lab	Date		Number		CY
12/28/2023 10:57	W01@4'	0.6	No Staining	No Odor	Yes	Lab					
12/28/2023 10:59	W02@4'	0.5	HC Staining	No Odor	Yes	Lab					
1/19/2024 13:26	B05@9'	5.1	No Staining	No Odor	Yes	Lab					
1/19/2024 13:28	W03@8'	0.0	No Staining	No Odor	Yes	Lab					
1/19/2024 13:30	B04@9'	734.8	HC Staining	Strong HC Odor	Yes	Lab	Total Removed		0		0
1/19/2024 13:32	W04@9'	5.4	No Staining	No Odor	Yes	Lab	Disposal Facility:				
1/19/2024 13:34	S02@8'	1.5	No Staining	No Odor	Yes	Lab	Groundwater Recovery				
							DATE GW ENCOUNTERED:			DEPTH:	
							GROUNDWATER IN CONTACT WITH IMPACTED SOIL?				
							LNAPL OR SHEEN OBSERVED ON GW?				
GROUNDWATER SAMPLING							Date		BBLs		
Date/Time	Groundwater Sample ID	Depth Collected	Turbid?	Sheen?	Odor?	Photo?					
							Total Removed		0		
							Disposal Facility:				



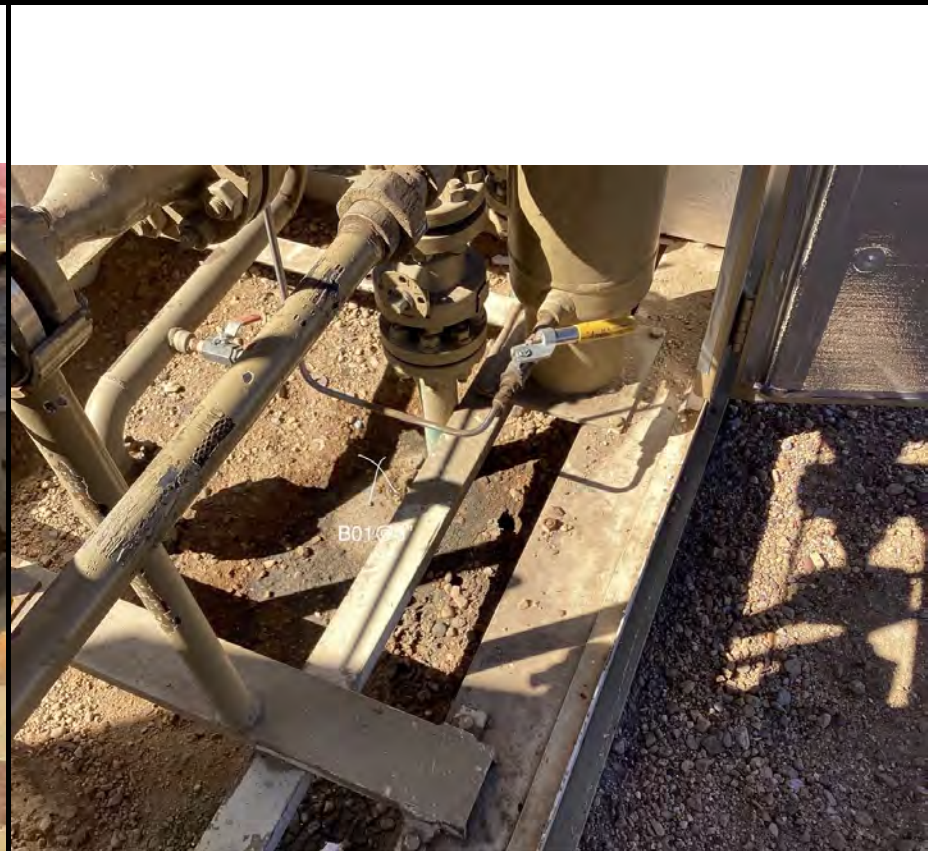
SITE NAME: GreenLeaf 16N-15HZ							DATE: 3/27/2024	REM. PROJECT #:	WEATHER: 35 Sunny		
SITE DIRECTIONS: 32.0 M E of CR 41, 250' S Into							CLIENT: Oxy				
LEGALS AND LAT/LONG: 40.145469, -104649567							TASMAN PERSONNEL: Will Irby				
SOIL TYPES: Clayey Sand - SC							SURFACE GRADIENT: North				
SOIL SAMPLING							FACILITY INFRASTRUCTURE				
Date/Time	Soil Sample ID	PID (ppm)	Visual	Olfactory	Photo?	Grab or Lab Sample?	EQUIPMENT		Quantity		
							Above Ground Storage Tank (AST)				
2/1/2024 12:10	B05@10'	0.0	No Staining	No Odor	Yes	Lab	Buried or Partially Buried Vessel				
2/1/2024 12:15	W05@8'	0.0	No Staining	No Odor	Yes	Lab	Separator				
2/1/2024 12:20	BG01@6'	0.1	No Staining	No Odor	Yes	Lab	Emission Control Device (ECD)				
2/1/2024 12:30	BG02@6'	0.0	No Staining	No Odor	Yes	Lab	Dump Line				
2/1/2024 12:40	BG03@6'	0.0	No Staining	No Odor	Yes	Lab	Wellhead				
2/1/2024 12:50	BG04@6'	0.0	No Staining	No Odor	Yes	Lab	Flowline				
3/5/2024 13:00	B05@11'	1.5	No Staining	No Odor	Yes	Lab	Other:				
3/5/2024 13:02	S03@9'	1.4	No Staining	No Odor	Yes	Lab	Soil Loads Removed				
3/5/2024 13:04	W05@9'	2.6	No Staining	No Odor	Yes	Lab	IMPACTED SOIL IDENTIFIED?				
3/5/2024 13:06	W06@9'	2.2	No Staining	No Odor	Yes	Lab	ESTIMATED VOLUME OF IMPACTS:				
3/5/2024 13:08	BG05@9'	2.2	No Staining	No Odor	Yes	Lab	Date	Number	CY		
3/5/2024 13:10	BG05@11'	1.4	No Staining	No Odor	Yes	Lab					
3/5/2024 13:12	BG06@9'	2.1	No Staining	No Odor	Yes	Lab					
3/5/2024 13:14	BG06@11'	1.6	No Staining	No Odor	Yes	Lab					
3/27/2024 10:12	W05R@9'	0.3	No Staining	No Odor	Yes	Lab					
3/27/2024 10:14	B05R@11'	0.2	No Staining	No Odor	Yes	Lab	Total Removed		0	0	
							Disposal Facility:				
							Groundwater Recovery				
							DATE GW ENCOUNTERED:			DEPTH:	
							GROUNDWATER IN CONTACT WITH IMPACTED SOIL?				
							LNAPL OR SHEEN OBSERVED ON GW?				
GROUNDWATER SAMPLING							Date		BBLS		
Date/Time	Groundwater Sample ID	Depth Collected	Turbid?	Sheen?	Odor?	Photo?					
							Total Removed		0		
							Disposal Facility:				

Photographic Log



Equipment ID:		Equipment Type:		Equipment ID:		Equipment Type:	
Material:	Volume:	Contents:		Material:	Volume:	Contents:	
Notes/Conditions:				Notes/Conditions:			

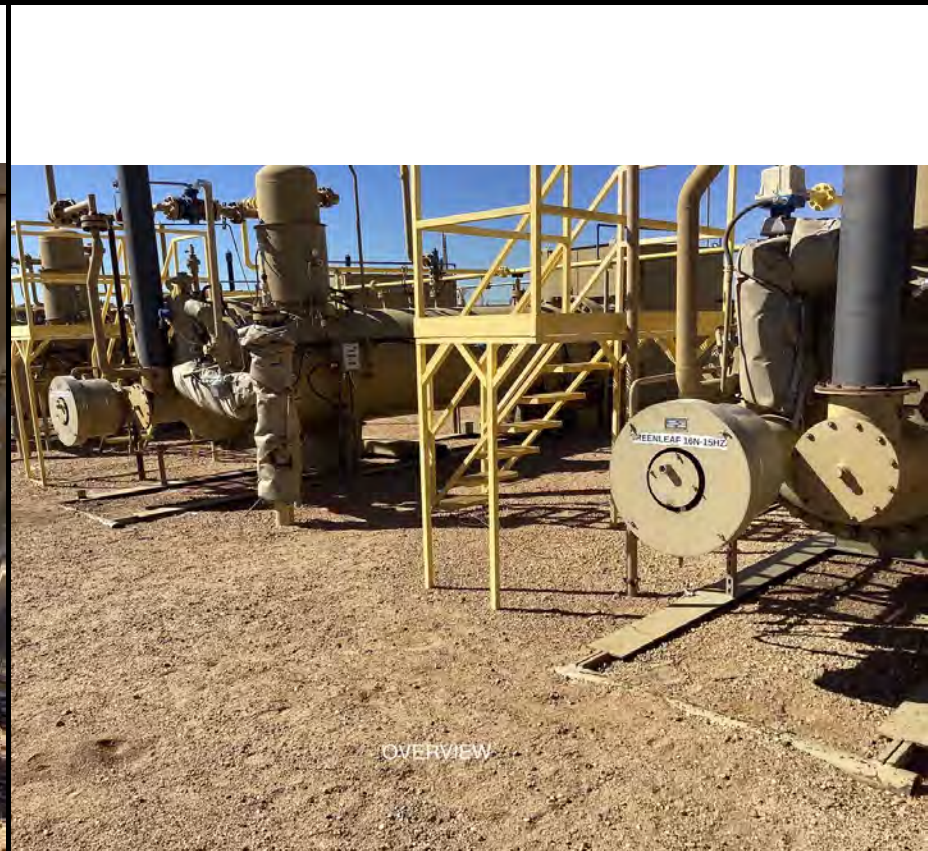
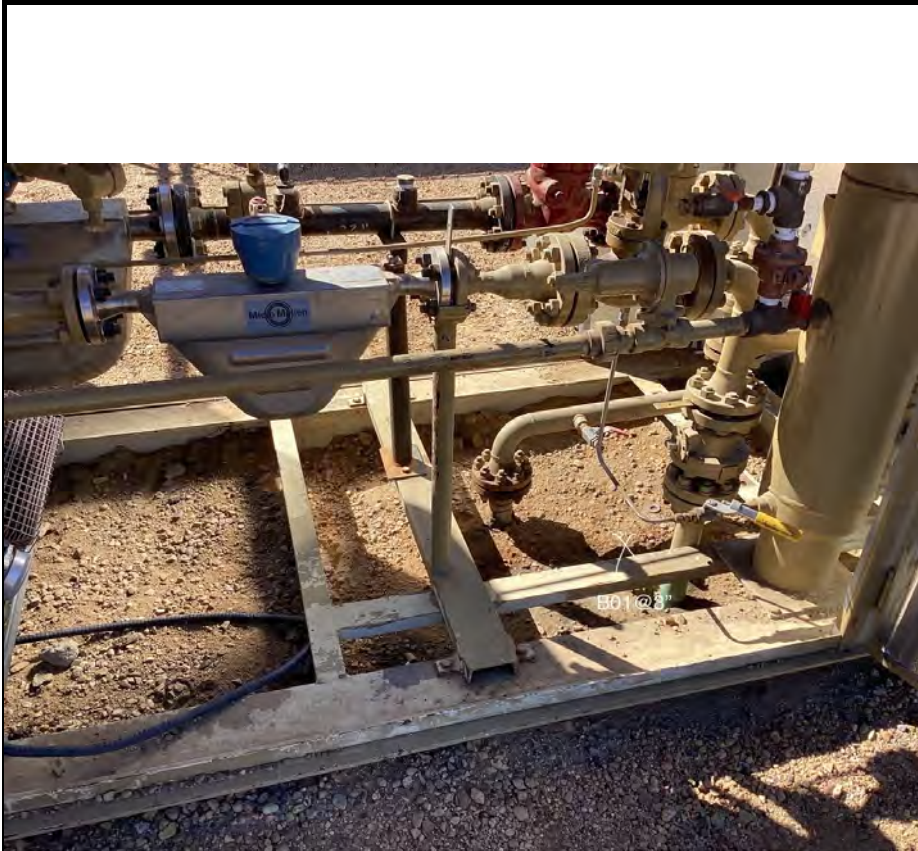
Photographic Log



Equipment ID:		Equipment Type:	
Material:	Volume:	Contents:	
Notes/Conditions:			

Equipment ID:		Equipment Type:	
Material:	Volume:	Contents:	
Notes/Conditions:			

Photographic Log



Equipment ID:		Equipment Type:	
Material:	Volume:	Contents:	
Notes/Conditions:			

Equipment ID:		Equipment Type:	
Material:	Volume:	Contents:	
Notes/Conditions:			

Photographic Log



Equipment ID:		Equipment Type:	
Material:	Volume:	Contents:	
Notes/Conditions:			

Equipment ID:		Equipment Type:	
Material:	Volume:	Contents:	
Notes/Conditions:			

Photographic Log



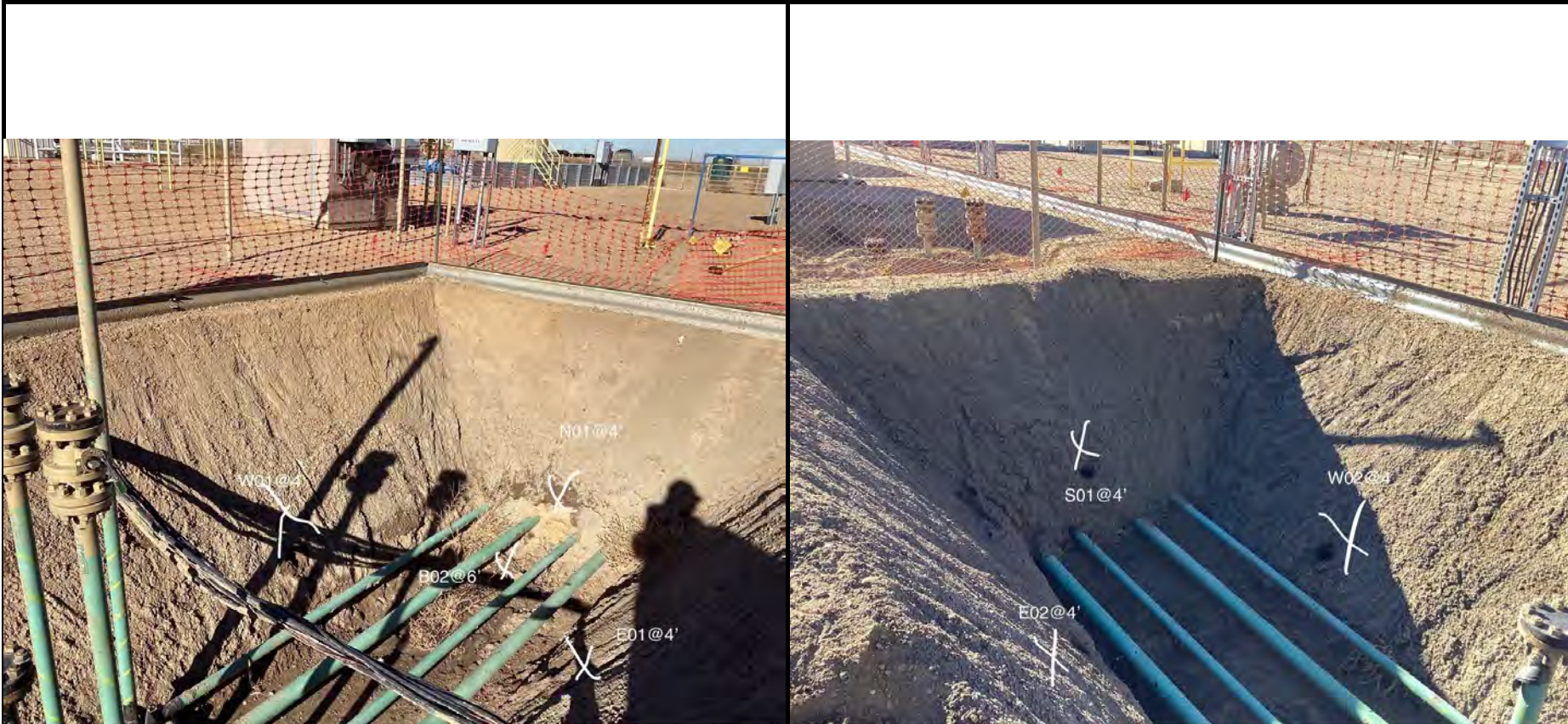
Blank space for additional notes or observations.

Equipment ID:		Equipment Type:		Equipment ID:		Equipment Type:	
Material:	Volume:	Contents:		Material:	Volume:	Contents:	
Notes/Conditions:				Notes/Conditions:			

Photographic Log

					
Equipment ID:		Equipment Type:	Equipment ID:		Equipment Type:
Material:	Volume:	Contents:	Material:	Volume:	Contents:
Notes/Conditions:			Notes/Conditions:		



Photographic Log



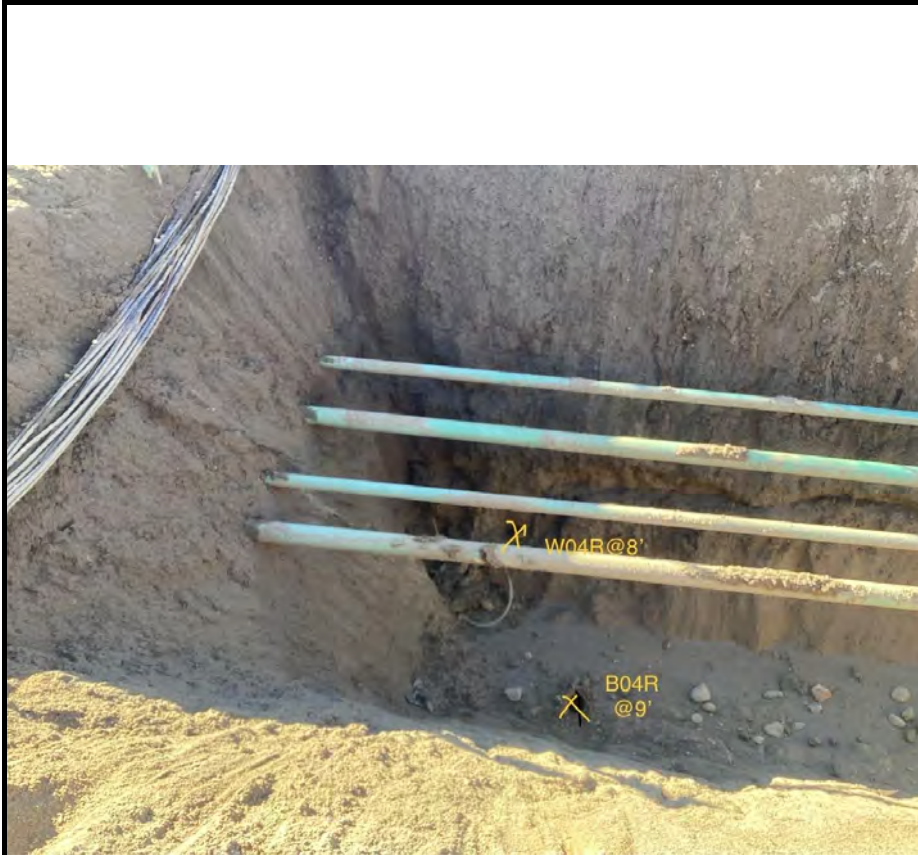
Blank space for additional notes or observations.

Equipment ID:		Equipment Type:		Equipment ID:		Equipment Type:	
Material:	Volume:	Contents:		Material:	Volume:	Contents:	
Notes/Conditions:				Notes/Conditions:			

Photographic Log

					
Equipment ID:		Equipment Type:	Equipment ID:		Equipment Type:
Material:	Volume:	Contents:	Material:	Volume:	Contents:
Notes/Conditions:			Notes/Conditions:		

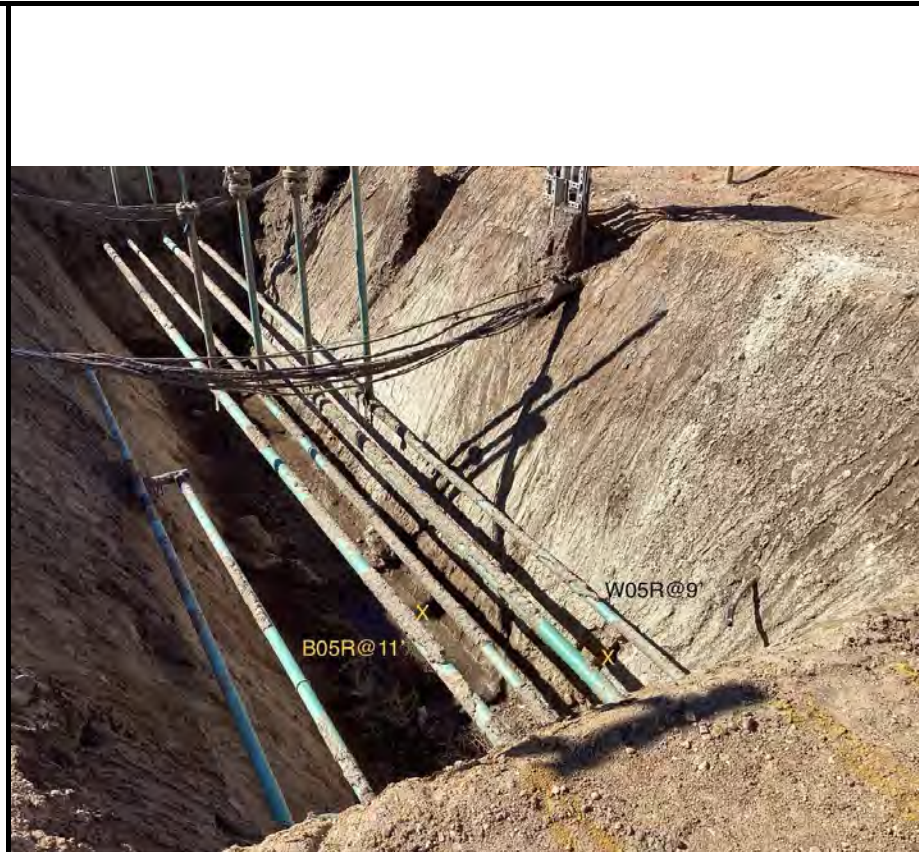
Photographic Log



Equipment ID:		Equipment Type:	
Material:	Volume:	Contents:	
Notes/Conditions:			

Equipment ID:		Equipment Type:	
Material:	Volume:	Contents:	
Notes/Conditions:			

Photographic Log



Equipment ID:		Equipment Type:	
Material:	Volume:	Contents:	
Notes/Conditions:			

Equipment ID:		Equipment Type:	
Material:	Volume:	Contents:	
Notes/Conditions:			