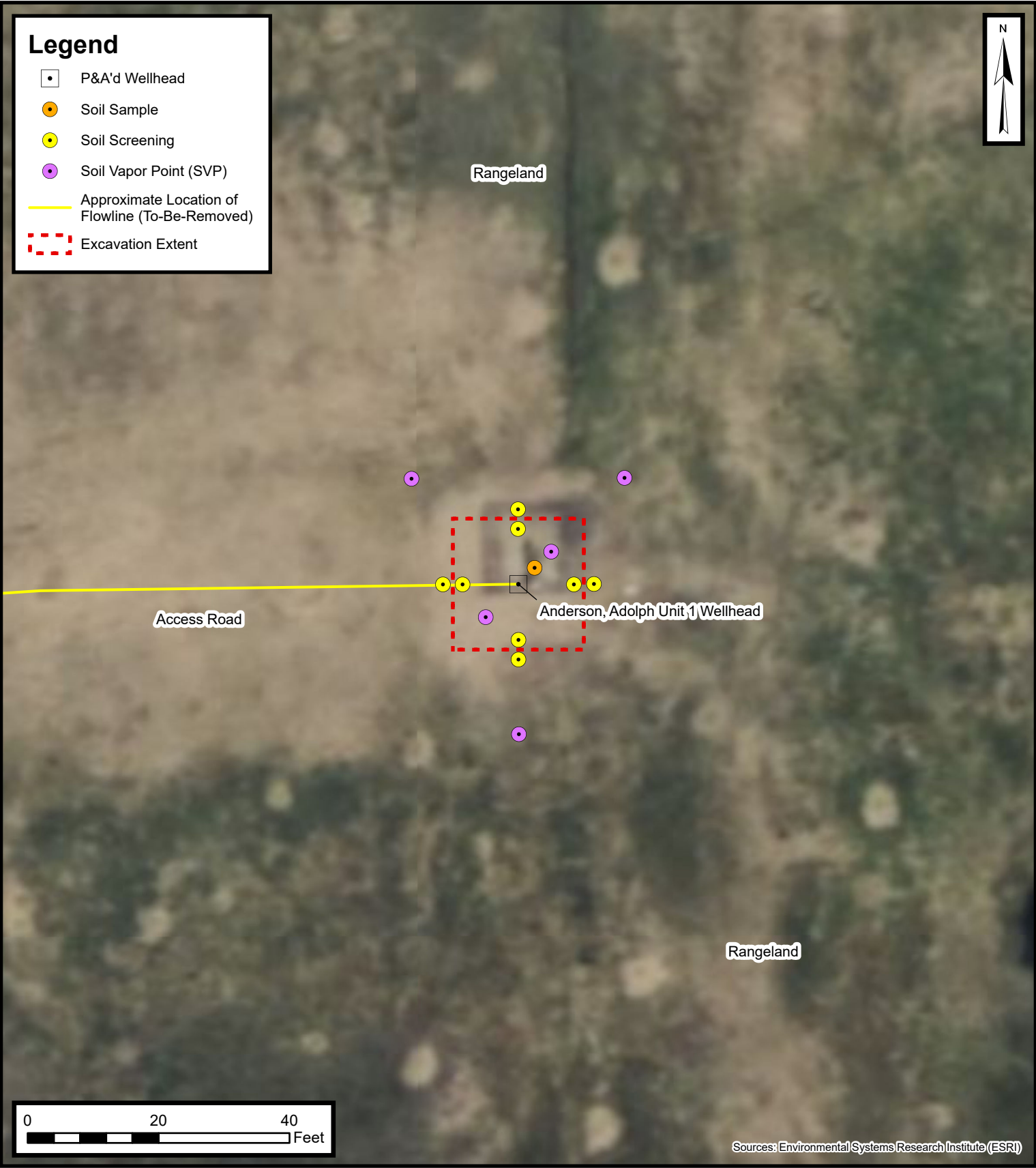
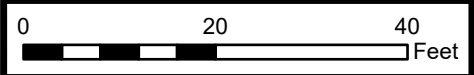


Legend

- P&A'd Wellhead
- Soil Sample
- Soil Screening
- Soil Vapor Point (SVP)
- Approximate Location of Flowline (To-Be-Removed)
- ▭ Excavation Extent



Default Folder: C:\Users\Margan\OneDrive - ENSOLUM, LLC\Ensolum\GIS



Sources: Environmental Systems Research Institute (ESRI)

Proposed Wellhead Excavation and Soil Sampling Locations Map

Anderson, Adolph Unit 1 Wellhead
Kerr-McGee Oil & Gas Onshore, LP
SWSW SEC 22-T2N-R66W
Weld County, CO

Project Number: 09A1417745



FIGURE

2