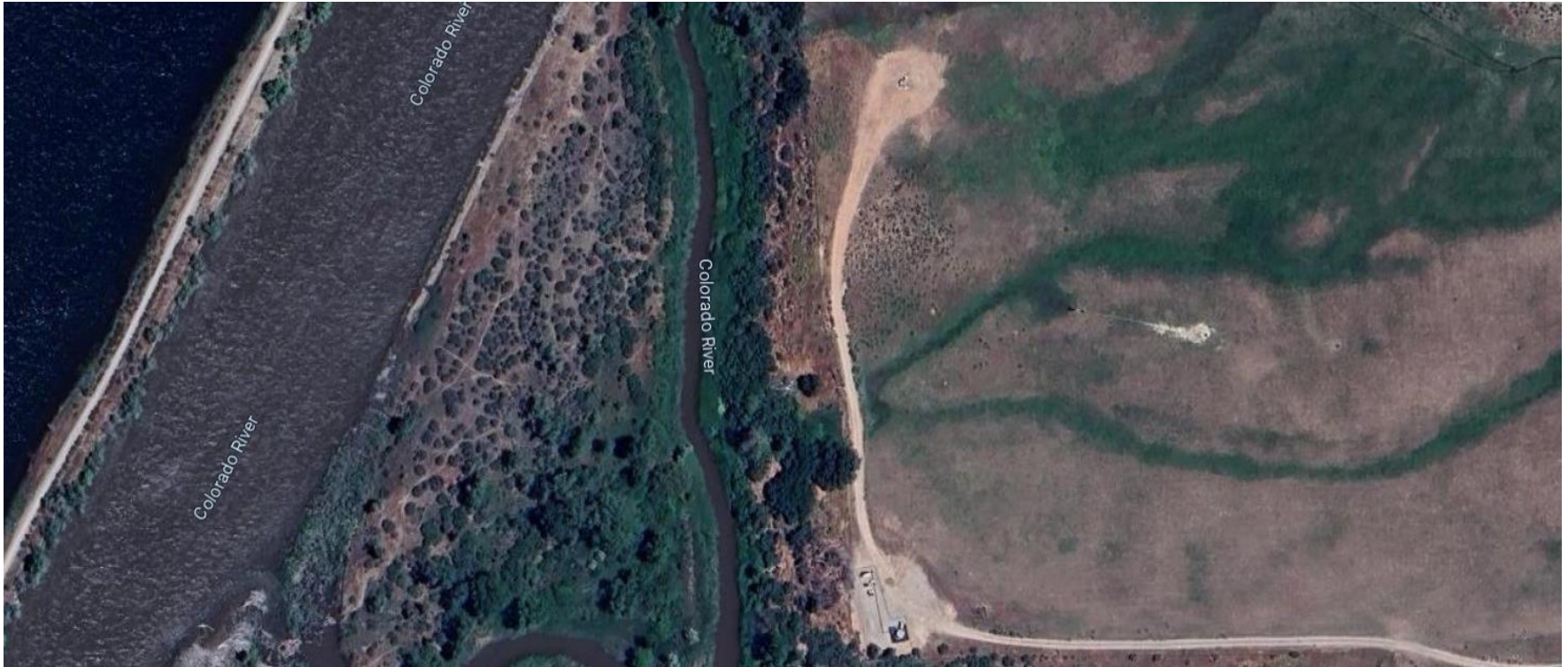


Storm Water Management and Erosion control

Location Name: TEP ROCKY MOUNTAIN LLC SAVAGE RMV 121-27 Pad

Location ID: 324140



Location Overview: Location is within High Priority/Density/Black Bear Habitat areas/Bald Eagle Roost site & in close proximity to NSO habitat area. Location is approximately 60 yards from the Colorado River & approximately 174 yards from Beaver Creek.

Section/Township/Range: 27 6S94W

Storm water Management and Erosion control
Location Name: TEP ROCKY MOUNTAIN LLC SAVAGE RMV 121-27 Pad
Location ID: 324140



North West corner of location.



North East corner of location.



South West corner of location.



South East corner of location.