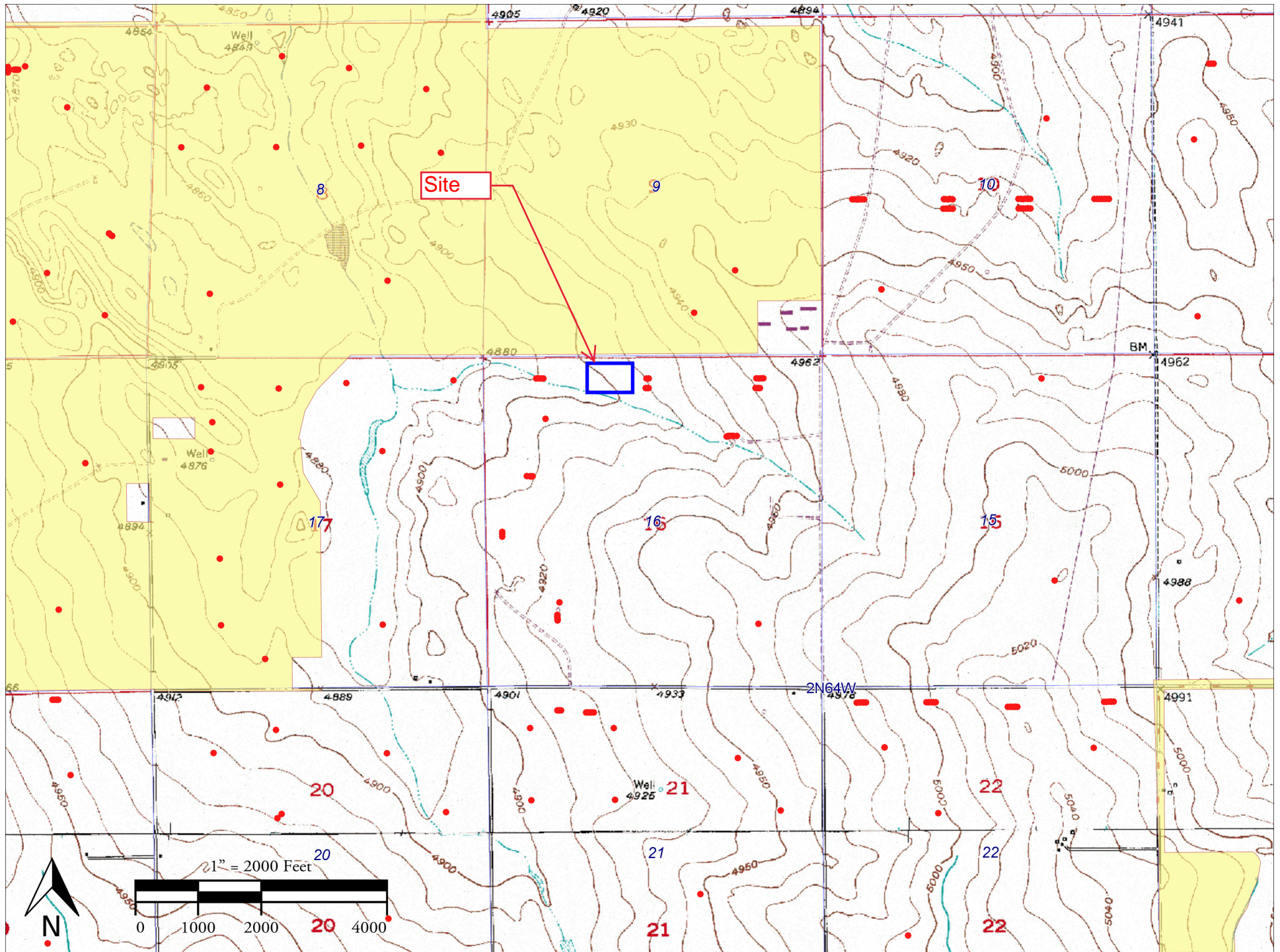


# DP402/Hullabaloo

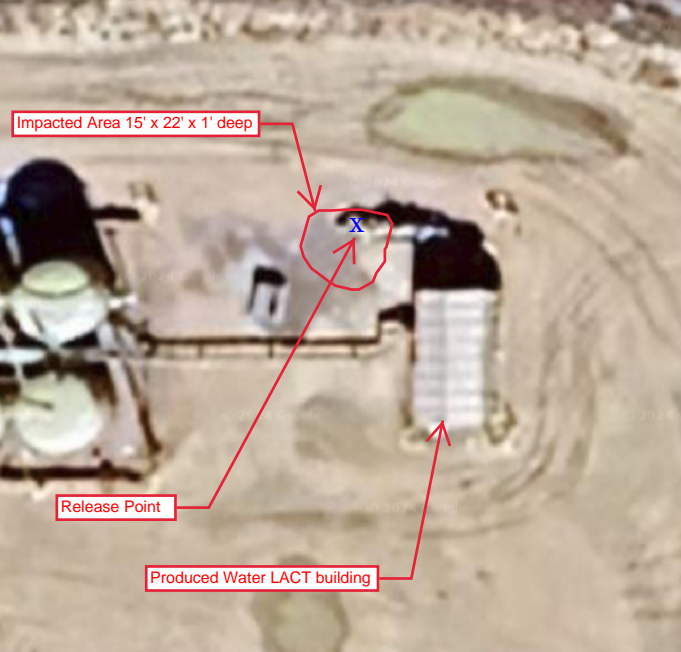


Impacted Area 15' x 22' x 1' deep

X

Release Point

Produced Water LACT building





## Photo Log



### Description:

#1 - DP402/Hullabaloo Facility

## Photo Log



### Description:

#2 - Looking northeast at pig launcher where release occurred



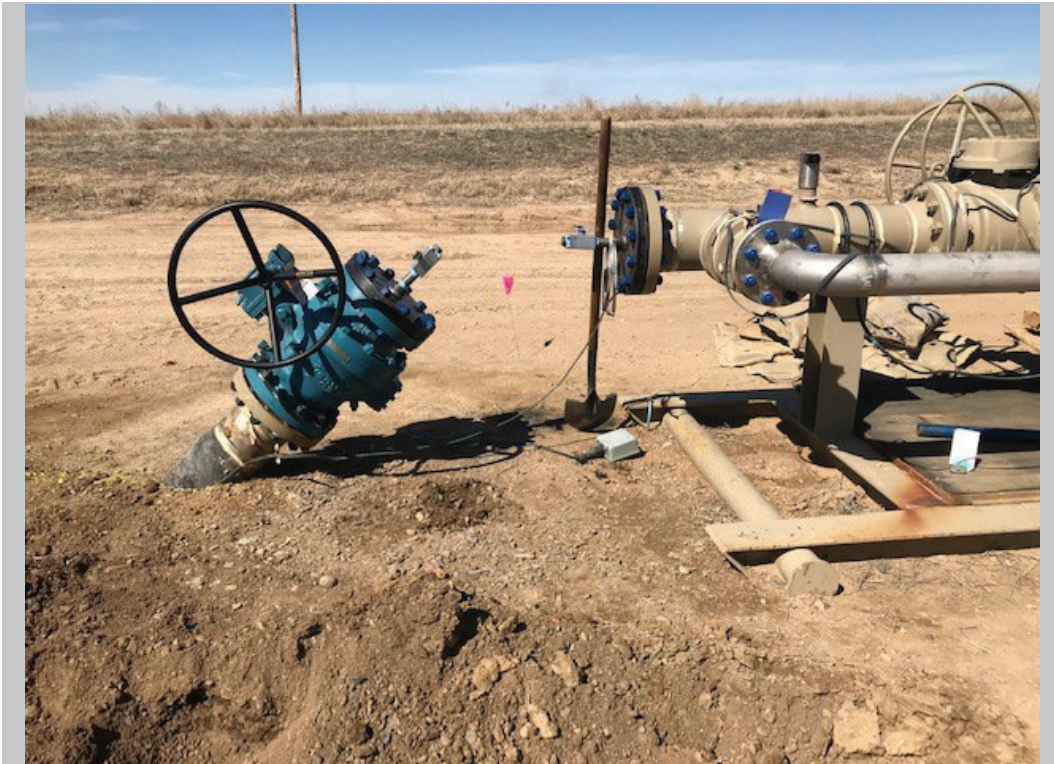
## Photo Log



**Description:**

#3 - Looking southeast at impacted soil area that has been partially excavated. Note LACT building in background.

## Photo Log



**Description:**

#4 - Looking north at failure location; failed section has been removed from system.



## Photo Log



### Description:

#5 - Failed section of pipe. Band on the left side of pipe was used as a leak clamp.

## Photo Log



### Description:

#6 - Inside of failed pipe section.